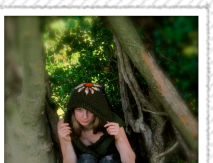
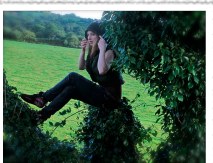
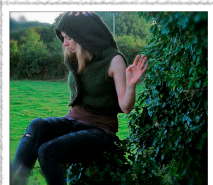
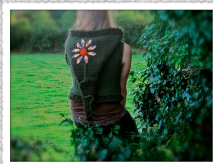


“FLOWER ON MY HOOD”



MATERIAL LIST:

YARN: 400 grams Rosários 4 Millenium

100% wool, Super Bulky

YARDAGE: 260 yards / 236 meters

NEEDLES&HOOKS: US 17 / 12.75 mm

FINISHED SIZE :

LENGHT: 42 cm / 16,5"

CHEST: 105 cm / 41.3"

SHOULDER: 7 cm / 2.7"

HOOD: length: 68 cm / 26.7"

width: 62 cm / 24.4"

NOTES: Vest is made in 2 peaces - body and hood.

Body of the vest is knitted sideways.

Flower application is sewed on the hood.

PATTERN:

BODY:

Using green color Cast on 7.

Row 1: Knit.

Row 2: Purl.

Row 3: Knit 1, increase 1 (kfb), knit 1, cast off 3 (for button hole), k1, increase 1(kfb), k1.

Row 4: Purl.

*Row 5: K 1, increase 1 (kfb), knit until 1 stitch before the end, increase 1 (kfb), k1.

Row 6: Purl.

Repeat from * until you have 18 rows (18cm / 7.1").

*Row 19: Knit.

Row 20: Purl.

Repeat these two rows 3 more times (6 cm / 2.4'') (or until the length is right to make right armhole).

ARMHOLE (starting from right armhole):

Row 27: Knit 6, cast off 10, knit to the end.

Row 28: Purl back casting on all the stitches casted off in previous row using backward loop cast - on.

*29: Knit.

30: Purl.

Repeat these two rows 23 times (46 cm / 18.1'') (or until the length is right to make left armhole).

Row 76: Knit 6, cast off 10, knit to the end.

Row 77: Purl back casting on all the stitches casted off in previous row using backward loop cast - on.

*Row 78: Knit.

Row 79: Purl.

Repeat these two rows 3 more times (6 cm / 2.4'') or as many times as you did for the right side of the vest.

*Row 86: K 1, decrease one (k2tog), knit until 3 stitches before the end, decrease 1 (k2tog), knit the last stitch.

Row 87: Purl.

Repeat from * 7 times (15 cm / 5.5'').

Row 103: Knit.

Row 104: Purl.

Cast off.

HOOD:

Using darker color cast on 40.

Row 1: Knit, turn back.

Row 2: Purl, turn back.

Repeat these two rows until you have 28 rows.

Row 29: Cast off 6 stitches, knit 28, cast off 6 stitches, turn back.

Row 30: Purl, turn back.

Row 31: Knit 1, k2tog, knit 22, k2tog, knit the last, turn back.

Row 32: Purl, turn back.

Row 33: Knit 1, k2tog, knit 20, k2tog, knit the last, turn back.

Row 34: Purl, turn back.

Row 35: Knit 1, k2tog, knit 18, k2tog, knit the last, turn back.

Row 36: Purl, turn back.

Row 37: Knit 1, k2tog, knit 16, k2tog, knit the last, turn back.

Row 38: Purl, turn back.

Row 39: Knit 1, k2tog, knit 14, k2tog, knit the last, turn back.

Row 40: Purl, turn back.

Row 41: Knit 1, k2tog, knit 12, k2tog, knit the last, turn back.

Row 42: Purl, turn back.

Row 43: Knit, turn back.

Row 44: Purl, turn back.

Row 45: Knit 1, k2tog, knit 10, k2tog, knit the last, turn back.

Row 46: Purl, turn back.

Row 47: Knit, turn back.

Row 48: Purl, turn back.

Row 49: Knit 1, k2tog, knit 8, k2tog, knit the last, turn back.

Row 50: Purl, turn back.

Row 51: Knit, turn back.

Row 52: Purl, turn back.

Row 53: Knit 1, k2tog, knit 6, k2tog, knit the last, turn back.

Row 54: Purl, turn back.

Row 55: Knit, turn back.

Row 56: Purl, turn back.

Row 57: Knit 1, k2tog, knit 4, k2tog, knit the last, turn back.

Row 58: Purl, turn back.

Row 59: Knit, turn back.

Row 60: Purl, turn back.

Row 61: Knit 1, k2tog, knit 2, k2tog, knit the last, turn back.

Row 62: Purl, turn back.

Row 63: Knit, turn back.

Row 64: Purl, turn back.

Row 65: Knit 1, k2tog, k2tog, knit 1, turn back.

Row 66: Purl, turn back.

Row 67: Cast off.

Once the hood is done sew on application of your choice.

Crochet a flower in the picture:

-take the same green color used for the body and crochet chain approx. 43 cm/ 16.9" long and sew it on the middle of your hood to create a stem.

-middle part of the flower: with red /orange color chain 3, slip stitch to join .

Rnd 1: single crochet to the end increasing by one every second stitch.

Repeat this round 3 more times, fasten off.

-leaves: -with colorful yarn chain 14.

-1 dc into second ch from hook, working one stitch into each ch, 4 sc, 4 dc, 4 sc, then working 1 stitch into each chain on other side of base chain, 4 sc, 4 dc, 4 sc crocheting last sc into first sc at beginning of spiral, fasten off.

Make 8 of these leaves.

Position all parts on the hood creating flower and sew them on the hood.

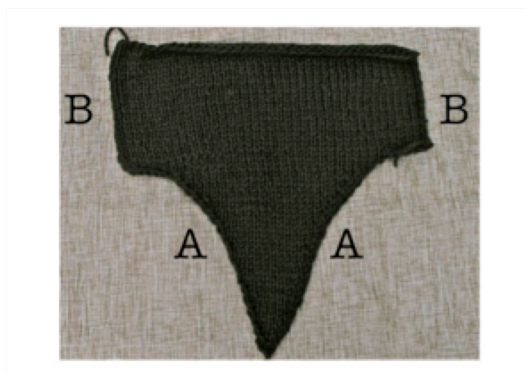
Next step is to attach the hood to the body:

-Sew "A" edges together (picture 1).

To attach the hood correctly to the body, find centre of neck line and attach it to end of the "A" seam of the hood where it divides "B" edge on half as it is the middle of your hood.

Sew "B" edge to neck line.

PIC 1:



EDGING:

Use the same color used for the hood.

With circular needles RS facing pick up stitches around the whole edge - down the front, across the back, up to other side, over the hood until you meet the place you

started to pick up stitches.

Rnd 1: K1, p1 to the end increasing extra 2 ~ 3 stitches at the front curves for together of 4 rounds.

Cast off.

Sew on button!

That's all!

I hope my notes are easy to read and understand. But if you have any question or misunderstanding ~ please don't hesitate to contact me at:

agnese.vajevska@gmail.com

or

you can find me on Raverly as "agnesite"

You can find more info about me by visiting my blog:

<http://littlehobbits.blogspot.com/> "