



## Out Campaign Scarf

Amanda K. Metskas

Warm up your favorite atheist on even the coldest of winter days with this Out Campaign Scarf. This pattern was inspired by the Richard Dawkins Foundation's Out Campaign. Learn more at <http://outcampaign.org/>. With this scarf you can:

**BE WARM** OUT

If this pattern is your inspiration to learn to knit, I recommend having a friend show you the basics. If you aren't friends with any knitters, you might try finding a knitting group in your area. Do a little googling to find one, and see if someone there would be willing to show you a thing or two. You can also learn by signing up for a class at your local yarn shop, or by getting a book or using an online tutorial. Unless you have a high tolerance for frustration, I'd recommend learning the basics from another person. You can use a book or online resource to learn additional techniques, but if this is your first time picking up a pair of needles and a ball of yarn you really want another person to guide you. To be honest, if you've never knit before, this is not the pattern to start with, unless you can convince a friend to do the first 40 rows for you. After that, this pattern is a piece of cake.

If you know the basics, but are still a beginning knitter, give this project a whirl. The color stranding (sometimes referred to as "fair isle") technique used to make the "A" will give you a bit of a challenge, and after that you'll find the rest of the scarf to be easy smooth sailing. There is a good explanation of how the do color stranding on [knitty.com](http://knitty.com/ISSUEwinter06/FEATwin06TT.html):

<http://knitty.com/ISSUEwinter06/FEATwin06TT.html>.

**Size:** One Size

**Finished Measurements:** 72 inches long by 7 inches wide

**Materials:** Cascade 220 [100% Wool; 220 yds per 100g skein]

Main Color: Black 8555, 4 skeins

Contrasting Color: Red 8414, 1 skein

**Recommended Needle Size:** U.S. #7/4.5mm 16 inch circular needle.

**Notions:** Tapestry needle, two stitch markers.

**Gauge:** 24 rows/18 stitches = 4 inches in stockinette stitch.



August E. Brunsman IV,  
executive director of the  
Secular Student Alliance  
([www.secularstudents.org](http://www.secularstudents.org)),  
is 5' 7".

**Important Note Regarding Gauge:** Your gauge for this pattern isn't very important; however, your aspect ratio does matter. Aspect ratio = row gauge/stitch gauge. The aspect ratio of the pictured sample is 1.33. If your aspect ratio is too far off from this your "A" will have noticeably different proportions.

**Pattern Notes:** This project is worked using stockinette stitch in the round. This means that you will knit every stitch on each round.

This scarf is knit as a tube so that the wrong side of the color stranded knitting is on the inside and will not show when the scarf is complete. A tube scarf also has the advantage of being extra warm because of the double thickness.

**Directions:**

Cast on 60 stitches.

Place Marker, and join to begin working in the round.

Knit 30 stitches, place marker, knit until the end of the first round.

Knit 5 rounds.



Work chart beginning with row 1. The chart provides directions for the first 30 stitches of each round (between the marker for the start of the round and the marker at the midpoint). While working the chart, think of the first 30 stitches of each round as the "front" of the scarf and stitches 31-60 as the "back." The chart instructions apply to the front of the scarf, stitches 1-30 of each round. For stitches 31-60 of each round just knit with the main color as you did in the first 6 rounds.

A note on the color work: While working this chart you will sometimes want to carry the yarn you aren't using behind the work (color stranding), and sometimes you will need to cut the yarn and attach new yarn to work another section of color (intarsia). You probably don't want to carry yarn behind more than 6 stitches at the most of the other color. You'll have to make some judgment calls on where you want to do what. I carried the main color along all the time, except for on rows 18 and 19 for the crossbar of the "A". I attached the contrasting color at two points, once for each "foot" of the "A", and carried it up from row to row on each "leg" as I went until I got to the two intarsia rows at the crossbar. After the crossbar, you can carry the left side of the contrasting color up from row 17 to row 20. You'll need to attach the contrasting color again on the right side at row 20. At a certain point as you near the point of the "A", you can switch to using just one strand of the contrasting color by dropping the strand you've been using for the left hand side of the "A" and continuing with only the strand from the right side.

After the chart is completed, continue working in main color until scarf is 69 inches long (or 3 inches shorter than desired length).

Work two rounds in contrasting color.

Work two rounds in main color.

Work two rounds in contrasting color.

Work 2 inches in main color.

Bind off all stitches loosely.

Weave in all ends on the inside of the scarf.

Seam both ends of the scarf closed with main color, making sure that your seam runs from the beginning to the midpoint of the round at both ends of the scarf so that the “A” is centered on one side.

Block lightly if desired.

Wear proudly, or give to your favorite atheist.



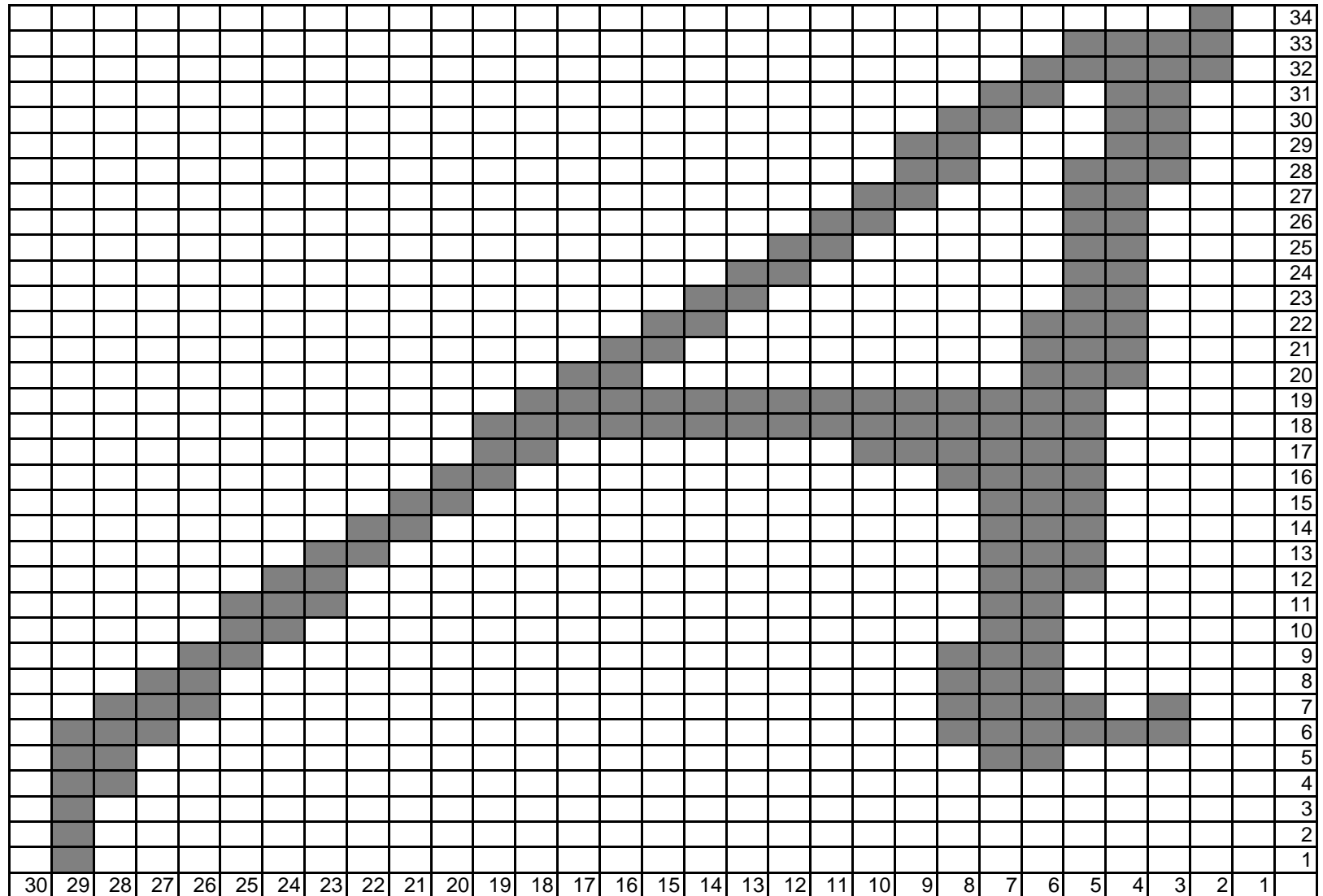
*The Humanist, by Anita Weschler models the scarf at the Institute for Humanist Studies*



*Amanda K. Metskas is the executive director of Camp Quest, Inc. ([www.campquest.org](http://www.campquest.org)). Camp Quest is a network of summer camps aimed at kids from atheist, agnostic, and other freethinking families.*

*Amanda is also a co-author of Raising Freethinkers: A Practical Guide for Parenting Beyond Belief (AMACOM, 2009). Learn more at [www.parentingbeyondbelief.com](http://www.parentingbeyondbelief.com)*

This pattern is published under a Creative Commons License. The complete details of the license can be found at <http://creativecommons.org/licenses/by-nc-sa/3.0/us/>. You may share, distribute, display and modify this pattern as long as you provide proper attribution to the author of the work and include the copyright notice. Any modifications to the pattern must be distributed under a similar Creative Commons License. You may not charge a fee for distributing this pattern, but you **may** charge for items that you knit using this pattern. Any of these conditions may be waived with written permission from the copyright owner



knit with main color  
 knit with contrasting color