

# Hugs and Kisses

by Elena Nodel



We recently moved to the interior of our province, and unlike the west coast of Canada where we lived for many years, the weather in the interior is much harsher. This means hot summers and cold winters. In the past, both my husband and I lived in places where it was cold enough for snow to last for months and months, however for our 5-year old daughter Maya it will be her first experience. This year we are so looking forward to winter, and we cannot wait to show Maya all the wonders the snow brings. She will need her warm hats and scarves here for sure! This is how the “Hugs and Kisses” winter set comprising of a scarf, hat and cowl came to be.

I wanted the set to be bright and cheerful, and most importantly easily spotted in the snow. It gets pretty white here!

I have always loved intarsia, and designing this set was a perfect opportunity to use my favorite technique. The Fair Isle chart I am using throughout is simple enough for a beginner, yet interesting enough for a well-practiced knitter. Each piece is knitted in the round and is completely seamless.

Size	Hat to fit Head Circumference		Cowl Finished Size		Scarf Finished Size		Yarn required (for whole set)
	cm	inches	cm	inch	cm	inches	
<b>Small (toddler)</b>	45.5 - 48.5	18 - 19	17.5 x 15	7.3 x 6	10 x 15	4 x 46	Colors A, C, E, F: 229 m/250 yds each.
<b>Medium (child)</b>	50 - 53.5	20 - 21	22 x 15	8.7 x 6	15 x 129.5	6 x 51	
<b>Large (youth)</b>	53.5 - 58.5	21 - 23	25.5 x 20	10 x 8	15 x 147	6 x 58	Colors B & D: 159 m/173 yds each

## Suggested Yarns

### Sweet Merino DK by Colour Adventures

(100% merino; 229m/250 yds in 115 g/4.06 oz)

Color A: Raven;

Color B: Lemon;

Color C: Ballerina;

Color D: Fresh Leaves;

Color E: Sour Cherry;

Color F: Polar Bear.

### Yellow Label DK by Tanis Fiber Arts

(100% merino; 238m/260 yds in 115 g/4.06 oz)

Color A: Charcoal;

Color B: Buttercup;

Color C: Sweetheart;

Color D: Lemongrass;

Color E: Poppy;

Color F: Natural.

## Abbreviations:

**k** = knit;

**p** = purl;

**k2tog** = knit next 2 sts together as one;

**st(s)** = stitch(es);

**Rnd(s)** = round(s);

**slipm** = slip marker;

**2x2 rib** = \*k2, p2\*, repeat\*\* to the end of the round.

**Skp** = slip one stitch as if to knit, knit the following stitch, then pass the slipped stitch over the knitted one.

**Pfkb** = purl into the front of the stitch, then knit into the back of the same stitch, slip the stitch from the left needle.

**GAUGE:** 22 sts and 29 rows = 10 cm/4 inches in Stockinette stitch and Fair Isle pattern with 4 mm/US #6 or size required to meet gauge.

## Notions

3.5 mm/US #4; 40 cm/16 inch circular needles;

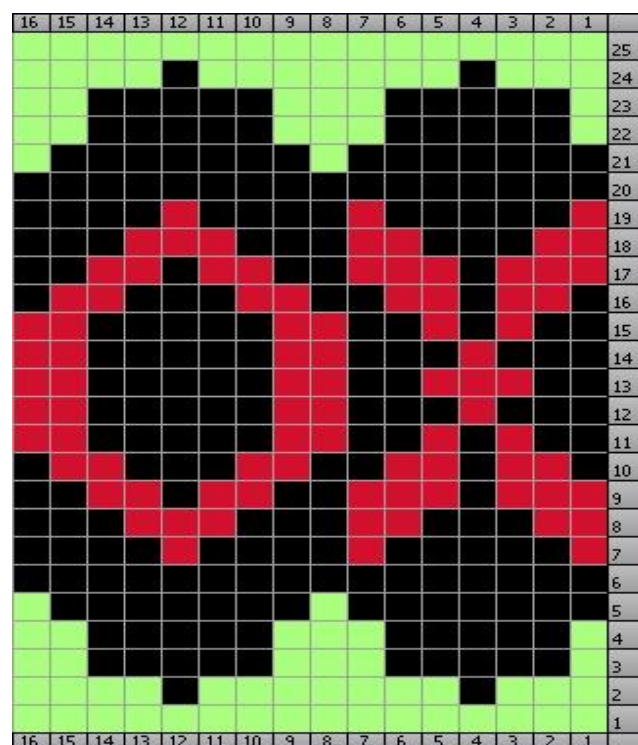
4 mm/US #6; 40 cm/16 inch circular needles;

4 mm/US #6 double pointed needles.

1 stitch marker

Darning needle

## Hugs and Kisses Fair Isle Chart



## ~Hat~

Using your preferred method (e.g. long tail cast on), color A and smaller sized needles, cast on 84 (92, 100) sts.

Place marker and join for knitting in the round. Be careful not to twist the stitches.

Work in 2x2 rib for 2.5 cm/1 inch.

Change to larger sized needles and knit one round, evenly increasing by 12 (20, 28) sts. Total stitch count should be 96 (112, 128) sts.

Change to color B and knit for 2 (2, 3) rnds.  
Change to color C and knit for 2 (2, 3) rnds.  
Change to color D and start working on 'Hugs and Kisses' Fair Isle chart (**page 2**) (use colors D, A, & E).

Once chart is complete, change to color C and knit one round evenly decreasing by 8 sts as follows: \*K10 (12, 14), k2tog\*, repeat \*\* to the end of the round. Total 88 (104, 120) sts.

**Knit with color C** for 1(1, 2) more rnds.

**Change to color B** and knit one round evenly decreasing by 8 (8, 10) sts as follows:  
\*K9 (11, 10), k2tog\*, repeat \*\* to the end of the round. Stitch count should be 80 (96, 110) sts.

Knit with color C for 1(1, 2) more rnds.

Change to color A.

**Sizes medium and large only:** knit one round evenly decreasing by 6 (10) sts as follows: \*K14 (9), k2tog\*, repeat \*\* to the end of the round.

**All sizes:** Total 80 (90, 100) sts.

**Start Crown Shaping.** (Using color A)

**Rnd 1:** \*skp, k6, k2tog\*, repeat \*\* to the end of the round.

**Rnds 2-4:** knit

**Rnd 5:** \*skp, k4, k2tog\*, repeat \*\* to the end of the round.

**Rnds 6-7:** knit

Change to color E.

**Rnd 8:** \*skp, k2, k2tog\*, repeat \*\* to the end of the round.

**Rnds 9-10:** knit

**Rnd 11:** \*skp, k2tog\*, repeat \*\* to the end of the rnd.

**Rnd 12:** knit

**Rnd 13:** \*k2tog\*, repeat \*\* to the end of the round.

**Rnd 14:** \*k2tog\*, repeat \*\* to the end of the round.

Break yarn, leaving 13 cm/5 inch tail.

Thread through the reminding stitches (8, 9, 10), tighten and fasten off.

## ~Scarf~

Using your preferred method (for example, long tail cast on), color A and smaller needles, cast on 48 (64, 64) sts.

Place marker and join for knitting in the round. Be careful not to twist the stitches.

Work in 2x2 rib for 4 cm/1.5 inches.

Knit one rnd.

Change to larger sized needles and color B. Knit for 3 rnds.

Change to color C and knit for 3 rnds.

Change to color D and knit one round.

Start working 'Hugs and Kisses' Fair Isle chart (use colors D, A, and E).

Once chart is complete, work one rnd in color D.

Change to color C and knit 3 rnds.

Change to color B and knit for 3 rnds.



**Stripes:**

Change to color A and knit for 8 rnds.

Change to color E and knit for 8 rnds.

Change to color F and knit for 8 rnds.

**Size S:** repeat stripes in color E and F one more time.

**Sizes M and L:** repeat stripes in color E and F two more times.

**All Sizes:**

Change to color C and knit for 8 rnds.

Change to color F and knit for 8 rnds.

Change to color C and knit for 8 rnds.

Change to color B and knit for 8 rnds.

**Sizes S and M:** repeat stripes in color C and B one more time.

**Size L:** repeat stripes in color C and B two more times.

**All Sizes:**

Change to color C and knit for 8 rnds.

Change to color D and knit for 8 rnds.

**Size L only:** repeat stripes in color C and D two more times.

**All Sizes:**

Change to color C and knit for 8 rnds.

Change to color B and knit for 8 rnds.

**Sizes S and M:** repeat stripes in color C and B one more time.

**Size L:** repeat stripes in color C and B two more times.

**All Sizes:**

Change to color C and knit for 8 rnds.

Change to color F and knit for 8 rnds.

Repeat stripes in C and F one more time.

Change to color E and knit for 8 rnds.

Change to color F and knit for 8 rnds.

**Size S:** repeat stripe in color E.

**Sizes M and L:** repeat stripes in color E and F one more time. Then repeat stripe in E.

**All Sizes:**

Change to color A and knit for 8 rnds.

Change to color B. Knit for 3 rnds.

Change to color C and knit for 3 rnds.

Change to color D and knit one round.

Start working 'Hugs and Kisses' Fair Isle chart (use colors D, A, and E).

Once chart is complete, work one more rnd in color D.

Change to color C and knit 3 rnds.

Change to color B and knit for 3 rnds.

Change to color A and knit for 1 round.

Change to smaller needles and work in 2x2 rib for 4 cm/1.5 inches.

Bind off in pattern.

**~Cowl~**

Using your preferred method (e.g. long tail cast on), color A and smaller needles, cast on 80 (96, 112) sts.

Place marker and join for knitting in the round. Be careful not to twist the stitches.

Work in 2x2 rib for 2.5 cm/1 inch.

**Sizes S and M:** change to color D and start working 'Hugs and Kisses' Fair Isle chart (use colors D, A, and C). Change to larger needles half way through the chart, on row 13.

**Size L:** Change to color B. Knit for 3 rnds.

Change to color F and knit for 3 rnds.

Change to color D and knit one round.

Start working 'Hugs and Kisses' Fair Isle chart (use colors D, A, and C). Change to larger needles half way through the chart, row 13.

Once chart is complete, knit one round with color D.

Change to color F and knit for 3 rnds.

Change to color B and knit for 3 rnds.

**All sizes:** Change to color A and knit one rnd, placing markers as follows:

Knit 14 (18, 21), pm, knit 10 (12, 14), pm, knit 32 (36, 42), pm, knit 10 (12, 14), pm, knit 14 (18, 21).

**Continued on page 5.**

**You will start raglan shaping next.**

**Rnd 1:** (knit to one stitch before the marker, kfb, slipm, kfb) x4, knit to the end.

**Rnd 2:** knit

**Sizes S and M:** repeat rounds 1 and 2 one more time, and then repeat round 1 only.

**Size L:** repeat rounds 1 and 2 two more time, and then repeat round 1 only.

### **All Sizes:**

Change to color C, and knit one round.

Next round start working in seed stitch and continue with raglan increases as follows:

**Rnd 1:** (\*k1, p1\*, repeat \* to one stitch before the marker, kfb, slipm, kfb) x4, \*k1, p1\*, repeat \* to the end.

**Rnd 2:** \*purl knits, knit purls\*, repeat \* to the end.

**Rnd 3:** (\*k1, p1\*, repeat \* to one stitch before the marker, pfb, slipm, pfb) x4, \*k1, p1\*, repeat \* to the end.

**Rnd 4:** \*purl knits, knit purls\*, repeat \* to the end.

**Sizes S and M:** repeat rnds 1-4 one more time.

**Size L:** repeat rnds 1-4 one more time, and then repeat rnds 1-2 one time.

Bind off in pattern.

### **Finishing:**

Weave in any loose ends. Block.

## **ACKNOWLEDGEMENTS:**

♥♥♥ Heartfelt thanks and my deepest gratitude go to my wonderful group of testers, whose hard work and most valuable input made this pattern possible.

Special thanks go to Janet for helping me with the presentation and editing of this pattern. ♥♥

## **COPYRIGHT**

Please respect my designer rights, and as such the copyright of this pattern will always remain with me. I am providing this pattern for personal home use only. You may make garments from it as gifts or donate to charities and fundraisers. Commercial use of this pattern is a violation of the copyright. Selling products made from this pattern or distributing this pattern in any manner is prohibited under the copyright unless I, Elena Nodel, have granted express written permission.

## **Contact Information:**

Email: [ElenaNodel@gmail.com](mailto:ElenaNodel@gmail.com)

Website: [www.AnadiomenaDesigns.com](http://www.AnadiomenaDesigns.com)

Pattern Designs:  
[www.ravelry.com/designers/Elena-Nodel](http://www.ravelry.com/designers/Elena-Nodel)

Colour Adventures Yarns on Etsy:  
[www.Anadiomena.Etsy.com](http://www.Anadiomena.Etsy.com)

Blog: [www.AnadiomenaDesigns.blogspot.com](http://www.AnadiomenaDesigns.blogspot.com)

Ravelry Username: [Anadiomena](https://www.ravelry.com/users/anadiomena)

Ravelry Group: [Anadiomena's Adventures](https://www.ravelry.com/groups/anadiomenas-adventures)

Facebook:  
[www.facebook.com/AnadiomenasDesigns](https://www.facebook.com/AnadiomenasDesigns)

Twitter: [www.twitter.com/AnadiomenasDesi](https://www.twitter.com/AnadiomenasDesi)



*Colour Adventures*  
creative designs and yarns by Anadiomena

