

Claire's Cabled Capelet

Annie Modesitt

PATTERN INFORMATION

Sizes:

S,M (L,XL)

Finished Measurements:

Neck Circ: 20 1/2 (23 1/2)"/52.5 (60) cm

Cape Length: 7 (8)"/18 (20.5) cm

Skill Level:

K 3 Intermediate

Fiber:

ModeKnit Yarn ModeBulk

(106yds /97m 3.5oz/100gr)

Color - Slate Flow, 2 balls req

Needles

11 US/8mm & 8 US/5mm

Gauge:

12 sts x 17 rows = 4"/20cm in St st on size

11 US/9mm needles

13 sts x 28 rows = 4"/20cm in Garter Rib on

size 8US/5.5mm

Notions:

Waste yarn for provisional cast on.

STITCHES & SPECIAL TECHNIQUES:

C4L *Cable 4 with a Left Twist*

Sl 2 sts & hold to front, k2, k slipped sts.

C4R *Cable 4 with a Right Twist*

Move yarn to RS, sl 2 sts & hold to back
k2, k slipped sts.

Dkss RS *Double Knit Slip Stitch RS Edge*

[K1, wyrs sl 1, k1] (3 sts total)

Dkss WS *Double Knit Slip Stitch WS Edge*

[Wyws sl 1, k1, wyws sl 1] (3 sts total)

K2tog-L *Knit 2 tog with a Left Slant*

Knit 2 sts tog so working needle is pointing to the left as it enters the stitch (dec will slant to the left) aka SSK, k2togTBL or skip.

VDD *Vertical Double Decrease*

Sl 2 sts as if to work k2 tog-R, k1, pass slipped sts over (decrease of 2 sts)



Wyrs *With Yarn Right Side*

Wyws *With Yarn Wrong Side*

Twisted Cord

Measure 2 lengths of yarn twice as long as desired finished length of twisted cord. Fold each strand in half. Lay 1 strand down, then lay the second strand across the first strand at a right angle, forming an "X". Bring up the ends of each piece of yarn and secure them with a slip knot to the opposite end of the same piece of yarn. Pass one of the end slipknots over a doorknob, hook or drawer pull, and slip a crochet hook into the opposite slipknot. Turn the hook to twist the strands of yarn. Continue twisting until the yarn is quite taut and evenly twisted. Bring the ends of the yarn together, then release the middle of the cord allowing it to twist around itself forming a plied cord.

Claire's Cabled Capelet

Note: When slipping sts while working the Dkss edge, the yarn will always be held toward you, regardless of whether the RS or the WS of the work is facing you.



CAPE

With a piece of waste yarn & larger needles, provisionally cast on 62 (70) sts

Row 1: Dkss RS Edge, p2, k2, [k2, p4, k2] 6 (7) times, p2, Dkss RS Edge.

Row 2 & all WS rows: Dkss WS Edge, k2, work in rib as est to last 5 sts, k2, Dkss WS Edge.

Row 3: Dkss RS Edge, p2, [p1, pfb, C4L, pfb, p1] rep to last 5 sts, p2, Dkss RS Edge — 76 (86) sts

Rows 5, 9, 13, 17, 21 & 25: Dkss RS Edge, work in rib as est to last 5 sts, p2, Dkss RS Edge.

Row 7: Dkss RS Edge, [p to 1 st before next cable, pfb, C4L, pfb] rep to last 5 sts, p2, Dkss RS Edge — 90 (102) sts

Row 11: Rep Row 7 — 104 (118) sts

Row 15: Rep Row 7 — 118 (134) sts

Row 19 Dkss RS Edge, [p to next cable, C4L, p5, kfb twice] 6 (7) times, p to next cable, C4L, p to last 5 sts, p2, Dkss RS Edge — 132 (150) sts

Row 23 Dkss RS Edge, [p to next cable, C4L, p5, C4R] 6 (7) times, p to next cable, C4L, p to last 5 sts, p2, Dkss RS Edge.

Rep Rows 23-26 once more until cape meas 7 (8)"/18 (20.5) cm from cast on, or to desired length.

COLLAR

Return to provisionally cast on sts and carefully undo them and slip them onto a needle, arrange work so the RS is facing and start with 2nd ball of yarn.

Row 1: With smaller needle work Dkss RS Edge, (K2tog, YO) 27 (31) times, k2tog, Dkss RS Edge — 61, including YO's as sts.

Row 2: Dkss WS Edge, [p1, k1] rep to last 4 sts, p1, Dkss WS edge.

Row 3: Dkss RS Edge, k to last 5 sts, p2, Dkss RS Edge

Row 4: Rep Row 2

Begin Short Rows

Next RS Row: Dkss RS Edge, k 31, wrap yarn around next st & turn work (W&T)

Next WS Row: Dkss WS Edge, work in patt as est (p1, k1) for 8 sts, W&T.

Next RS Row: Dkss RS Edge, k to W&T from prev RS row, slip wrap up onto needle and knit it tog with wrapped st, k4, W&T.

Next WS Row: Dkss WS Edge, work in patt as est (p1, k1) to W&T from prev WS row, slip wrap onto needle and work tog with wrapped st, work 4 more sts in patt as est.

Rep last two rows, adding 4 more sts to the middle short row section every row for a total of six short rows, 24 sts between the last 2 W&T s.

You'll end with a WS row, finish the last RS row by dealing with the W&T as in prev rows, then work to the end of the row, working Dkss WS Edge as est.

Resume Collar Stitch Patt

Next Row (RS): Dkss RS Edge, knit to last 5 sts, p2, Dkss RS Edge.

Claire's Cabled Capelet

Next Row (WS): Dkss WS Edge, (p1, k1) rep to last 4 sts, p1, Dkss WS Edge.

Rep last two rows until collar meas 7 (7 1/2)"/18 (19) cm from provisional CO row, end with a WS row.

I-CORD BO

At the start of the row K3, slip these sts back onto the LH needle. [K2, k2tog-L] rep 54 (62) times times across work — 3 sts on the RH needle, 4 sts rem to be worked on the LH needle.

Slip the 3 sts back onto the LH needle, K2, VDD.

Slip the 3 sts back onto the LH needle, K1, VDD.

VDD the 3 rem sts, tie off the last st.

FINISHING

Weave in ends, steam block piece.


TIE CORD

Following the instructions for a Twisted Cord, create a cord with a finished length between 24"-36"/61-29 cm. Weave this cord in and out of the YO's created in the first row of the Collar to use as a closure.

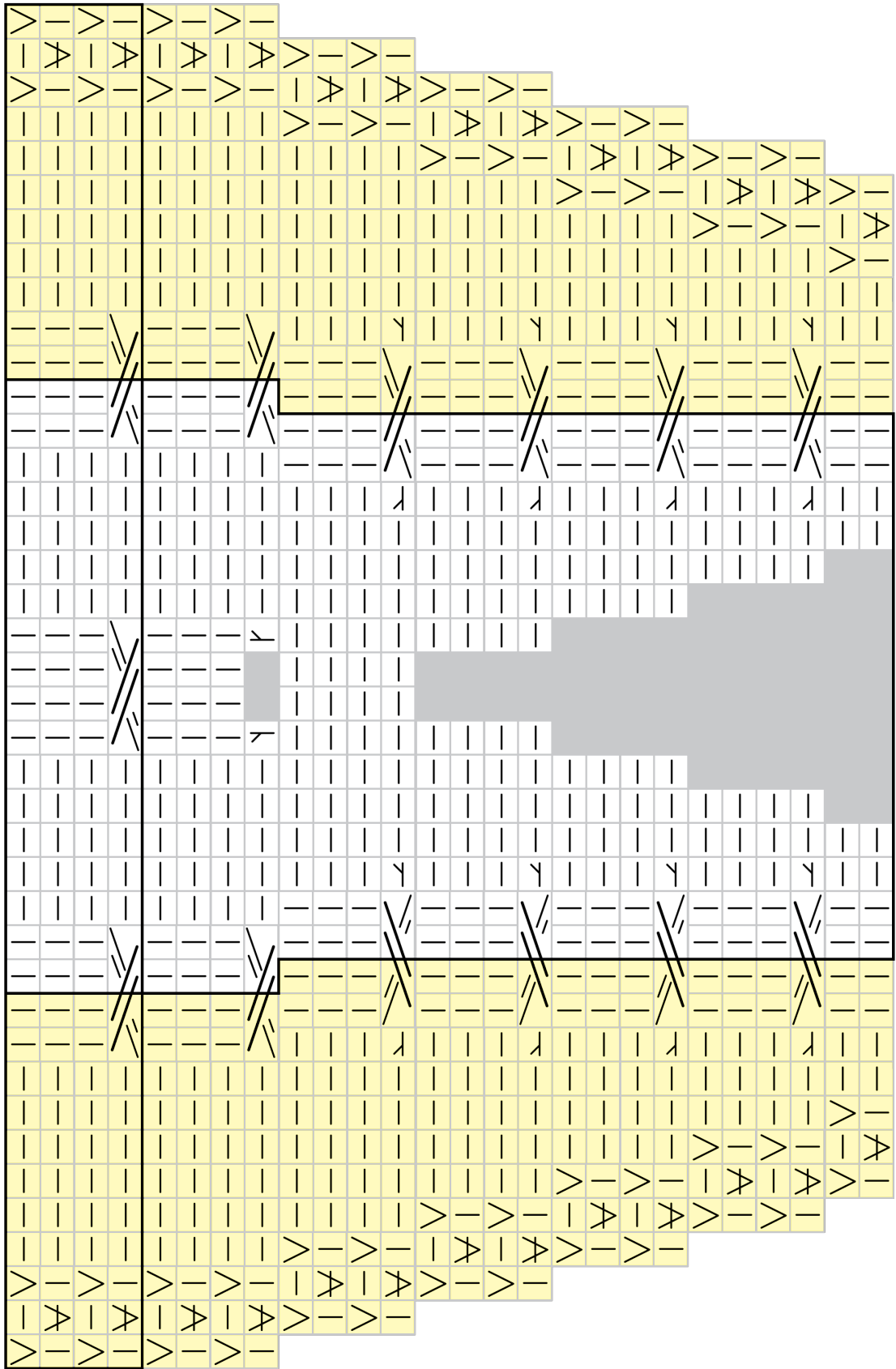


Claire's Cabled Capelet

26 25 24 23 22 21 20 19 18 17 16 15 14 13 12 11 10 9 8 7 6 5 4 3 2 1

St st	SI st (wyws)	 C4L C4R
Rev St St	SI st (wyr)	
K Inc	P Inc	

18 17 16 15 14 13 12 11 10 9 8 7 6 5 4 3 2 1



4 3 2 1
8 7 6 5

Claire's Cabled Capelet