

Paw mittens



These mitts were inspired by a request to make mitts to match a racoon hat. While the paw print will not win awards for realism, they do satisfy most children's request for animal mittens.

The outer mitten is knit with a very small gauge for a chunky yarn in order to keep out water and wind while the lining is a looser gauge with a DK yarn.

Sizing: Three sizes are provided, S (M, L). The small will fit a 5-7 year old while the M is for a pre-teen to small women's size. The L would be a medium women's size.

Materials: Sirdar Tweedy (A) 2-50g balls (200 yds/182 m)
Debbie Bliss baby Cashmerino for over stitching (B) 12.5 gm (36 yd/31 m)
Orkney Angora Incredible DK (C) for lining 1-50g ball (218 yd/199 m)

3.0 mm double pointed needles (outer mitt)
3.5 mm double pointed needles (lining)

Gauge: 20 st and 30 rows = 4" in st st using yarn A and smaller needles.
22 st and 30 rows = 4" in st st using yarn C and larger needles.

Outer mitten

Hem:

With 3.0 mm needles and waste yarn, cast on 32 (36, 40) sts using the provisional cast-on.

Using yarn A, K 1st stitch and slip it onto the last needle for the first 3 rnds.

P1 *K 1, P1. Repeat from * to last st. K1.

Divide sts. evenly onto double pointed needles.

P1 *K 1, P1. Repeat from * to last st. K1.

P next row. This purl row forms the fold line for the hem.

Cuff Ribbing:

K1, P1 rib until the cuff measures 2.5" (3.0", 3.5") from the purl row.

Main body of mitten:

K 3 rnds

Thumb gusset increases:

Rnd 1: K3, place marker (pm), m1, pm, K to end of rnd.

Rnd 2: Knit

Rnd 3: Knit

Rnd 4: K3, slip marker, LLinc, knit to next marker, RLinc, slip marker, K to end of rnd

Rnd 5: Knit

Rnd 6: Knit

Repeat rounds 4, 5 and 6 until there are 13 (15, 17) stitches between the markers (end with a knit round)

K2, Kfb1, slip 13 (15, 17) thumb gusset stitches onto waste yarn holder, kfb1, Knit to end of the rnd.

Continue hand of mitt:

Rnd 1: Knit

Rnd 2: K3, ssk, knit to end of rnd.

Rnd 3: Knit

Rnd 4: K3, ssk, knit to end of rnd.

Rnd 5 – 6: Knit

For medium and large size:

Rnd 7: Knit

Rest of hand:

Continue knitting in rounds until hand measures 6.25"(6.5", 7.75")

Top shaping:

Rnd 1: *k2, K2tog. Repeat from * to end of rnd.

Rnds 2 & 3: Knit.

Rnd 4: *K2tog, k1. Repeat from * to end of rnd.

Rnd 5: Knit

Rnd 6: *K2tog. Repeat from * to end of rnd.

Cut yarn, Thread onto darning needle and slip remaining sts onto tail. Pull tightly and fasten off.

Thumb:

Place 13 (15, 17) sts from waste yarn holder onto dpns, dividing sts as evenly as possible. Join yarn by picking up one stitch through 1st Kfb1, and then another stitch on the side of the hand. (Leave a long enough tail to weave in and close gaps during finishing).

Knit across the rest of the stitches then pick up one stitch in side of hand and one stitch in 2nd Kfb1. Total of 4 stitches picked up – 17 (19, 23) sts on needles. (Redistribute if necessary.)

Knit until thumb measures 1.75" (2.0". 2.25")

K2tog to last st. K1.

Finish as for top of mitt.

Embellishments:

With yarn B, overstitch as per the charts for the Left and Right Mitten to create the paw pattern.

Lining

Carefully unchain provisional cast-on placing stitches on larger needles as you go. Using yarn C, K1, P1 rib until the cuff measures 2.5" (3.0", 3.5") from the purl row.

Knit as for outer mitten beginning at section "Outer Mitten".

When lining is complete, insert into outer mitten folding at purl row of hem.

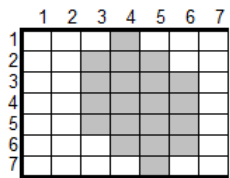
Repeat for 2nd mitten.

Chart For Paws

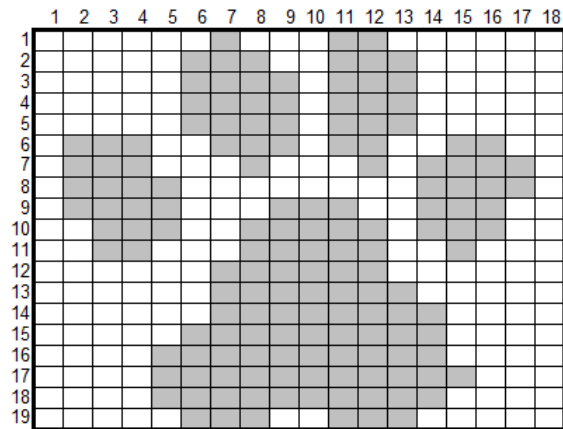
This chart is for a medium sized mitt. For a small sized mitt, remove one column and for a large sized mitt, add one column.

Before starting, use stitch markers or safety pins to outline the area that the oversteitching will occupy. That way, you can keep adjusting the placement until you like where it sits without having to remove any stitches.

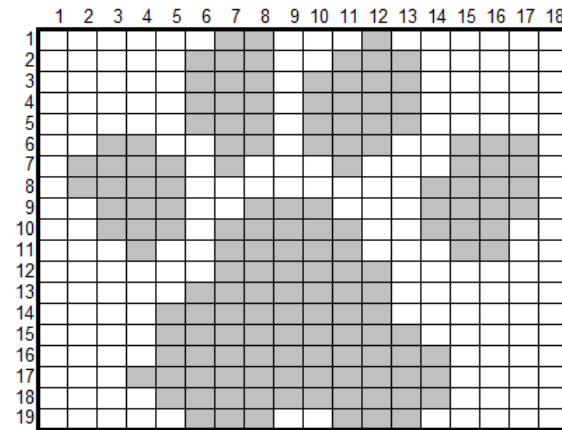
Left Thumb



Left Mitt



Right Mitt



Right Thumb

