

“Bear Hands” Gloves

Designed by Bonnie Nortz



Measurements:

Glove width: 4", glove length 10.5", index finger 3". Finger lengths can be customized. Fits average male or female hand.

Materials:

- 2 skeins light brown (KnitPicks Swish Worsted, Doe)
- 1 skein dark brown (KnitPicks Swish Worsted, Bark)
- Set of 4 double-pointed needles, US size 4.
- 2 stitch markers (can use loops of yarn)
- 3 stitch holders (can use strands of yarn, or extra needles)
- Yarn needle/Tapestry needle
- (Optional) Conductive thread

Gauge:

5.5 sts by 8 rows = 1" by 1" (Calculated for stranded knitting)

Instructions:

RIGHT HAND GLOVE

Cuff:

With the light brown yarn, cast on 48 sts onto four double-pointed needles. Join in the round, being careful not to twist the stitches. Knit a 2x2 rib (k2, p2 around) until the piece measures 3", or desired cuff length.

For the next round, *k1, k2tog, k9, repeat from * around (44 sts).

Thumb Gusset:

At the beginning of the next round, attach dark brown yarn, carrying the yarn behind the work by twisting it with the light brown yarn every three stitches. Make sure to keep the strands at the same tension or slightly looser as the knitting. As the number of stitches changes, make sure not to twist the yarn between the same stitches for two subsequent rows – instead, strand the yarn for either two or four stitches one time, then continue twisting the yarn every three stitches.



Knit 6 rounds in stockinette (k around).

On the 7th round, knit until the last stitch, place a stitch marker, and knit the last stitch. Knit the first stitch of the 8th round, then place another stitch marker.

On this same round, begin the Right Hand color chart, shown below.
Knit to first stitch holder, slip stitch holder, k1, kfb, k until last stitch before second stitch holder, kfb, k1, slip stitch holder, k around.

Increase in this way on every even round until there are 14 sts between the markers. On the next round, place those 14 stitches on a stitch holder, and continue around.

Knit plain until the glove measures 4" from the ribbing.

Fingers:

Knit 16 sts of the next round, slip next 10 sts onto stitch holder, knit last 16 sts of the round. Knit plain for three more rounds.

When working the fingers, twist the dark brown yarn every two stitches, but don't twist the yarn between the same stitches for two consecutive rows. Also make sure that the stranding is loose enough, especially around the base of the fingers. It is more difficult to make the stranding looser than it is to make it tighter.

Index Finger:

Knit first 5 sts of the next round, kfb once, knit last 5 sts of the round, kfb once. Rearrange the needles, and put the rest of the stitches on a stitch holder. Knit these 14 stitches until finger measures approximately 3". Then k2tog around, break the yarn, and pull it through the remaining stitches.

Middle Finger:

Knit next 3 sts on the larger stitch holder, kfb once, k2, kfb once, knit last 3 sts of the round, and pick up 2 sts from the index finger. Rearrange the needles, and put the rest of the stitches on a stitch holder. Knit these 14 stitches until finger measures approximately 3.25". Then k2tog around, break the yarn, and pull it through the remaining stitches.

Ring Finger:

Knit next 3 sts on the larger stitch holder, kfb once, k2, kfb once, knit last 3 sts of the round, and pick up 2 sts from the middle finger. Knit these 14 stitches until finger measures approximately 3". Then k2tog around, break the yarn, and pull it through the remaining stitches.

Pinky:

Slip all 10 sts from the pinky stitch holder onto needles. Knit first 5 sts, kfb once, knit last 4 sts of the round, and pick up 2 sts from the ring finger. Knit these 13 stitches until finger measures approximately 2.75". Then k2tog around, break the yarn, and pull it through the remaining stitches.

Thumb:

Slip all 14 sts from the thumb stitch holder onto needles. Pick up 2 sts from the hand. Knit these 16 stitches until thumb measures approximately 2.75". Then k2tog around, break the yarn, and pull it through the remaining stitches.

Finishing:

Weave in all ends, sew together any gaps between the fingers. Embroider fingers with dark brown yarn for claws, using the duplicate stitch and the color charts given. Begin the thumb embroidery on the last row of increases. Begin the fingers approximately 6 sts above the top of the palm colorwork. Count the rows before embroidering to make sure it will fit on the finger.

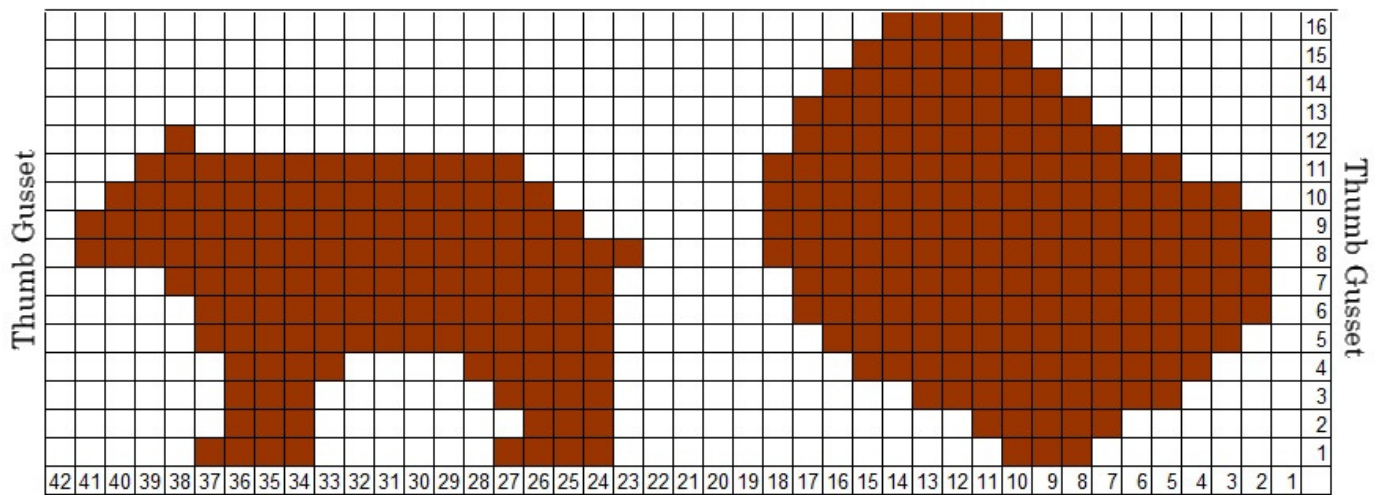
If desired, embroider conductive thread at the tips of index finger and thumb.



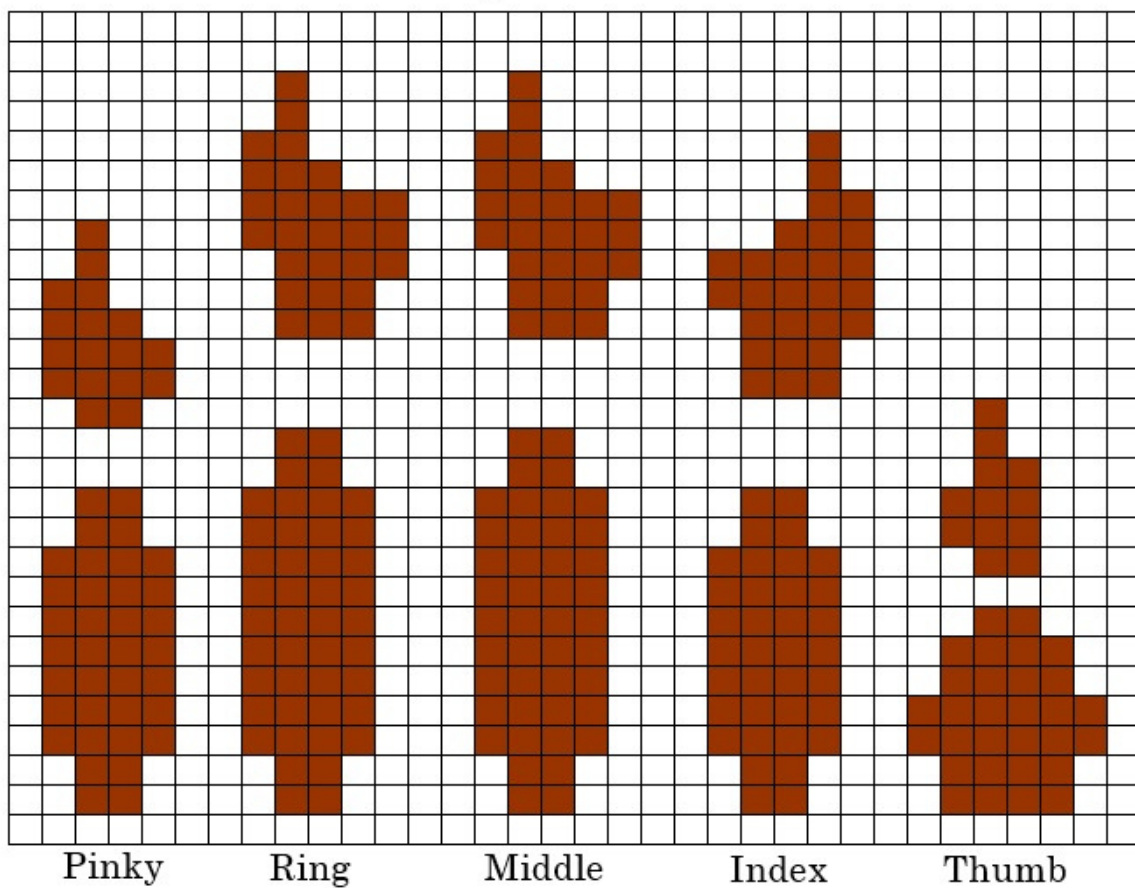
LEFT HAND GLOVE

Work as right hand, but using the Left Hand color chart instead.

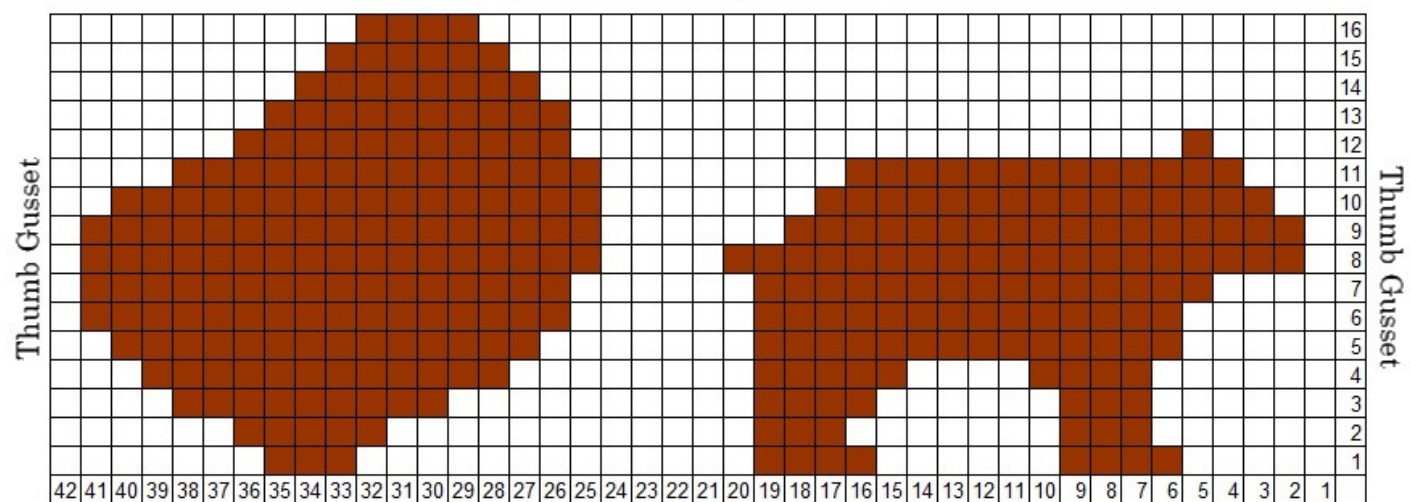
Right Hand Color Chart



Right Hand



Left Hand Color Chart



Left Hand

