

MARY-ALICE

“You do smell good !”

By Carine Ancel

This pattern was inspired by the shrug Alice wears in the movie Twilight, in the kitchen scene.



YARN

Koigu Painter's Palette Premium Merino (KPPPM) : 3 1/2 skeins

NEEDLES

size 2 1/2 US (3.0 mm) circular needle or size needed to achieve gauge

NOTIONS

4 stitch markers

GAUGE

26 stitches and 35 rows= 4 inches in stockinette stitch

FINISHED MEASUREMENTS

Length : 60 inches from cuff to cuff

Wrist width : 4 inches

Upper arm width : 6 inches

All content copyright © 2009 Carine Ancel. All rights reserved.

This pattern may be used for your own personal use. It may not be knit up for sale. You may make printed copies of this pattern for your own personal use. This pattern may not be posted to any web site without permission. This copyright notice must remain attached to the pattern when distributed in print or in electronic form.

Contact : carine.ancel@gmail.com

This pattern was downloaded from <http://www.ravelry.com>

STITCHES

p : purl

k : knit

M1R : lift loop between stitches with left needle from the back and knit into the front loop

M1L : lift loop between stitches with left needle from the front, knit into the back loop

k2tog : knit 2 together

ssk : slip 1 stitch purlwise, slip the next one, insert left needle into front loop of both stitches and knit together through the back loop

sl2tog, k1, p2sso : slip 2 together, knit 1, pass 2 slip stitches over (1 stitch remaining)

yo : yarn over

Lace pattern 1

Row 1 : k1, yo, k4, sl2tog, k1, p2sso, k4, yo, k1

Row 2 and every even row : knit or purl, depending if you knit in the round or flat

Row 3 : k2, yo, k3, sl2tog, k1, p2sso, k3, yo, k2

Row 5 : k3, yo, k2, sl2tog, k1, p2sso, k2, yo, k3

Row 7 : k4, yo, k1, sl2tog, k1, p2sso, k1, yo, k4

Row 9 : k5, yo, sl2tog, k1, p2sso, yo, k5

Lace pattern 2

Row 1 : ssk, k4, yo, k1

Row 2 and every even row : knit or purl, depending if you knit in the round or flat

Row 3 : ssk, k3, yo, k2

Row 5 : ssk, k2, yo, k3

Row 7 : ssk, k1, yo, k4

Row 9 : ssk, yo, k5

Lace pattern 3

Row 1 : k1, yo, k4, k2tog

Row 2 and every even row : knit or purl, depending if you knit in the round or flat

Row 3 : k2, yo, k3, k2tog

Row 5 : k3, yo, k2, k2tog

Row 7 : k4, yo, k1, k2tog

Row 9 : k5, yo, k2tog

All content copyright © 2009 Carine Ancel. All rights reserved.

This pattern may be used for your own personal use. It may not be knit up for sale. You may make printed copies of this pattern for your own personal use. This pattern may not be posted to any web site without permission. This copyright notice must remain attached to the pattern when distributed in print or in electronic form.

Contact : carine.ancel@gmail.com

This pattern was downloaded from <http://www.ravelry.com>

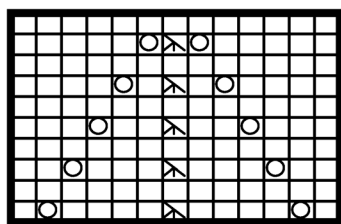
Lace charts

○ yo

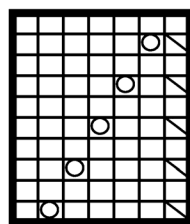
◻ ssk

◻ k2tog

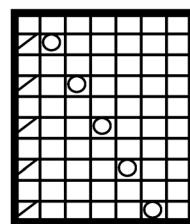
◻ sl2tog, k1,
p2sso



lace pattern 1



lace pattern 2



lace pattern 3

SLEEVES (knit two of them)

Cast on 54 stitches and join in the round, being careful not to twist stitches. Slip first stitch of left needle to right needle and last stitch of right needle to left needle. Place marker and work in the round.

Rows 1-186 : work in the round

Row 1 : k14, place marker, k13, place marker, k13, place marker, k14

Row 2, 4, 6 : purl

Row 3, 5, 7 : knit

Rows 8-186 : always work odd rows of lace patterns from right to left, even rows are knit stitch

Rows 8-16 : k1 (lace pattern 1 : rows 1-9) x4, k1

Row 17 : M1R, k54, M1L (56 stitches)

Rows 18-26 : k2 (lace pattern 1 : rows 1-9) x4, k2

Row 27 : M1R, k56, M1L (58 stitches)

Rows 28-36 : k3 (lace pattern 1 : r 1-9) x4, k3

Row 37 : M1R, k58, M1L (60 stitches)

Rows 38-46 : k4 (lace pattern 1 : r 1-9) x4, k4

Row 47 : M1R, k60, M1L (62 stitches)

Rows 48-56 : k5 (lace pattern 1 : r 1-9) x4, k5

Row 57 : M1R, k62, M1L (64 stitches)

Rows 58-66 : k6 (lace pattern 1 : r 1-9) x4, k6

Row 67 : M1R, k64, M1L (66 stitches)

Rows 68-76 : lace pattern 2: r 1-9, (lace pattern 1 : r 1-9) x4, lace pattern 3: r 1-9

Row 77 : M1R, k66, M1L (68 stitches)

Rows 78-86 : k1, lace pattern 2: r 1-9, (lace pattern 1 : r 1-9) x4, lace pattern 3: r 1-9, k1

Row 87 : M1R, k68, M1L (70 stitches)

Rows 88-96 : k2, lace pattern 2: r 1-9, (lace pattern 1 : r 1-9) x4, lace pattern 3: r 1-9, k2

Row 97 : M1R, k70, M1L (72 stitches)

Rows 98-106 : k3, lace pattern 2: r 1-9, (lace pattern 1 : r 1-9) x4, lace pattern 3: r 1-9, k3

Row 107 : M1R, k72, M1L (74 stitches)

Rows 108-116 : k4, lace pattern 2: r 1-9, (lace pattern 1 : r 1-9) x4, lace pattern 3: r 1-9, k4

Row 117 : M1R, k74, M1L (76 stitches)

All content copyright © 2009 Carine Ancel. All rights reserved.

This pattern may be used for your own personal use. It may not be knit up for sale. You may make printed copies of this pattern for your own personal use. This pattern may not be posted to any web site without permission. This copyright notice must remain attached to the pattern when distributed in print or in electronic form.

Contact : carine.ancel@gmail.com

This pattern was downloaded from <http://www.ravelry.com>

Rows 118-126 : k5, lace pattern 2: r 1-9, (lace pattern 1 : r 1-9) x4, lace pattern 3: r 1-9, k5
Row 127 : M1R, k76, M1L (78 stitches)
Rows 128-136 : (lace pattern 1 : r 1-9) x6
Row 137 : M1R, k78, M1L (80 stitches)
Row 138-146 : k1 (lace pattern 1 : r 1-9) x6, k1
Row 147 : M1R, k80, M1L (82 stitches)
Rows 148-156 : k2 (lace pattern 1 : r 1-9) x6, k2
Row 157 : M1R, k82, M1L (84 stitches)
Rows 158-167 : k3 (lace pattern 1 : r 1-10) x6, k3
Rows 168-177 : k3 (lace pattern 1 : r 1-10) x6, k3
Rows 178-186 : k3 (lace pattern 1 : r 1-9) x6, k3

Rows 187-266 : work flat

Work odd rows of lace pattern from right to left, even rows are purl stitch.

Please note that if you prefer working on straight needle, you won't be able to use it to work flat right now. You'll have to knit a few rows turning the circular needle to wrong side and back to right side before the armpit parting is wide enough to use the straight needle.

Rows 187-195 (even rows) : k3 (lace pattern 1) x6, k3

Rows 188-196 (odd rows) : k3, p78, k3

Rows 197-267 : work as rows 187-196

Rows 207-216 : work as rows 187-196

Rows 217-226 : work as rows 187-196

Rows 227-236 : work as rows 187-196

Rows 237-246 : work as rows 187-196

Rows 247-256 : work as rows 187-196

Rows 257-266 : work as rows 187-196

Finished shrug is 60 inches from cuff to cuff, if you want it longer, just add a few repeats of rows 187-196 : each sleeve should reach the middle of your back.

Join both sleeves using grafting technique. You can find a great tutorial here :

<http://www.knitty.com/ISSUESummer04/FEATtheresasum04.html>

Weave in all ends.

Enjoy !

If you notice any mistake, please let me know :

carine.ancel@gmail.com

All content copyright © 2009 Carine Ancel. All rights reserved.

This pattern may be used for your own personal use. It may not be knit up for sale. You may make printed copies of this pattern for your own personal use. This pattern may not be posted to any web site without permission. This copyright notice must remain attached to the pattern when distributed in print or in electronic form.

Contact : carine.ancel@gmail.com

This pattern was downloaded from <http://www.ravelry.com>