

# Cozy Pad: an iPad Cover

by Danna Rachel Cauthern

*A seamless, protective Cozy to pamper your iPad*

**The popular Kindle cover is now available for the iPad Family!** *Cozy Fire* is knit like a toe-up sock on a magic loop, so you can try it on as you go. It has a simple flame lace pattern and a one-button closure. It is a quick knit and a perfect companion to your iPad (1<sup>st</sup>, 2<sup>nd</sup>, 3<sup>rd</sup>, or 4<sup>th</sup> generation), iPad Mini, and even your iPad in its OtterBox!



iPad 2 in Knit Picks *Brava Worsted*

## Materials

US 6 (4.25 mm) 32-inch or longer circular needle or size needed to obtain gauge (or 2 circular US 6 needles)

1 3/4-inch button

Tapestry needle

## Size

To fit iPad Mini (iPad, First Generation iPad, OtterBox)

11.2" around x 7.9" tall (15.4" x 9.6", 16" x 9.6", 17" x 10") *when stretched*

## Yarn

70 (120, 130, 140) yards Worsted Weight Yarn

## Gauge

20 sts and 30 rows = 4" in SS

## Designer's Note

You can find links to useful tutorials for techniques used in this pattern (like *Judy's Magic Cast-On* and *Jeny's Surprisingly Stretchy Bind-Off*) and ideas for extra touches to perfect your Cozy Pad at [knit-knerd.blogspot.com](http://knit-knerd.blogspot.com).



## Directions

### Body

Cast on 46 (62, 66, 70) sts using *Judy's Magic Cast-On* or your favorite provisional "toe" cast-on. 23 (31, 33, 35) sts on each needle. K23(31, 33, 35) sts to the end of the first needle. This marks the beginning of rnd. K 1 complete rnd. 46 (62, 66, 70) sts. Begin lace pattern on next rnd. K2, PM, work row 1 of Flame Lace Chart, PM, k to end of rnd. Continue knitting rnds, working Flame Lace Chart between markers, repeating the chart every 10 rnds. Work until the cozy reaches the top of the iPad *with iPad inside*. Piece measures about 9.25" (10.75", 11", 11.5") tall unstretched and about 8" (9.6", 9.6", 10") when covering the iPad. Be sure to end after row 5 or row 10 of lace chart. K 1 rnd. Bind off 23 (31, 33, 35) sts from the front of the cozy using *Jeny's Surprisingly Stretchy Bind-Off*.

### Flap

Working back and forth, work in SS for 2 in, ending on a WS row. First decrease row (RS): k1, ssk, k until 3 sts remain, k2tog, k1. 21 (29, 31, 33) sts. Next row (WS): P to end. Buttonhole row (RS): k1, ssk, k7 (11, 12, 13), yo, k2tog, k6 (10, 11, 12), k2tog, k1. 19 (27, 29, 31) sts. P 1 row. Final decrease row (RS): repeat first decrease row. 17 (25, 27, 29) sts. P 1 row. Work 2 rows evenly. Bind off all sts (RS).

## Finishing

Secure button. Weave in ends. (Optional: add a single crochet or crab stitch border to the flap.) Enjoy!

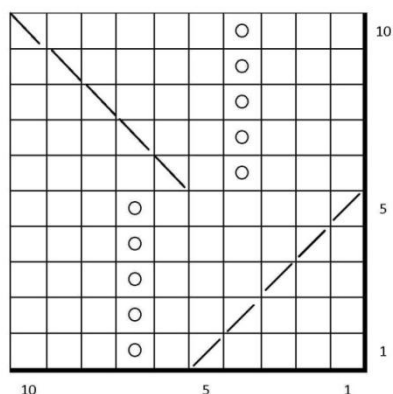


## Abbreviations and Stitch Definitions

K	Knit	P	Purl
SS Stitch	Stockinette	K2tog	Knit 2 stitches together
SSK	Slip 2 stitches knitwise, pass left needle through the fronts of the stitches, knit together back loops	St(s)	Stitch(es)
YO	Yarn over	PM	Place Marker
Rnd(s)	Round(s)		



## Flame Lace Chart<sup>1</sup>



Legend	
○	YO
／	K2tog
＼	SSK
	K

<sup>1</sup> Modified version of "Ivy Pattern" from *Charted Knitting Designs: A Third Treasury of Knitting Patterns*, by Barbara G. Walker  
 ©2013 Danna Rachel Schneider/Knit-Knerd Designs For pattern support, contact Danna Rachel at [knitknerddesigns@gmail.com](mailto:knitknerddesigns@gmail.com)