

Skully Snowflake Hat

By: Eric Plummer

Yarn: Cascade 220 Superwash Sport
50g / 136yds / 125m
1 skein each color

Needles: US4 / 3.5mm
US2 / 3.0mm

Gauge: 12sts x 13rows = 2" x 2"
On larger needles stok. In the round.

Stitches Used:

K2Tog: Knit 2 sts together

SSK: Slip 1 knitwise, 1 purlwise and k together.

K3Tog: Slip 1, k2tog, pssso.

Pattern:

This pattern is worked in stockinette stitch in the round.

Using provisional cast-on: CO 128sts in main color

1st rnd: K all

2nd rnd: P all

Begin Pattern.

When pattern is done 24sts remain.

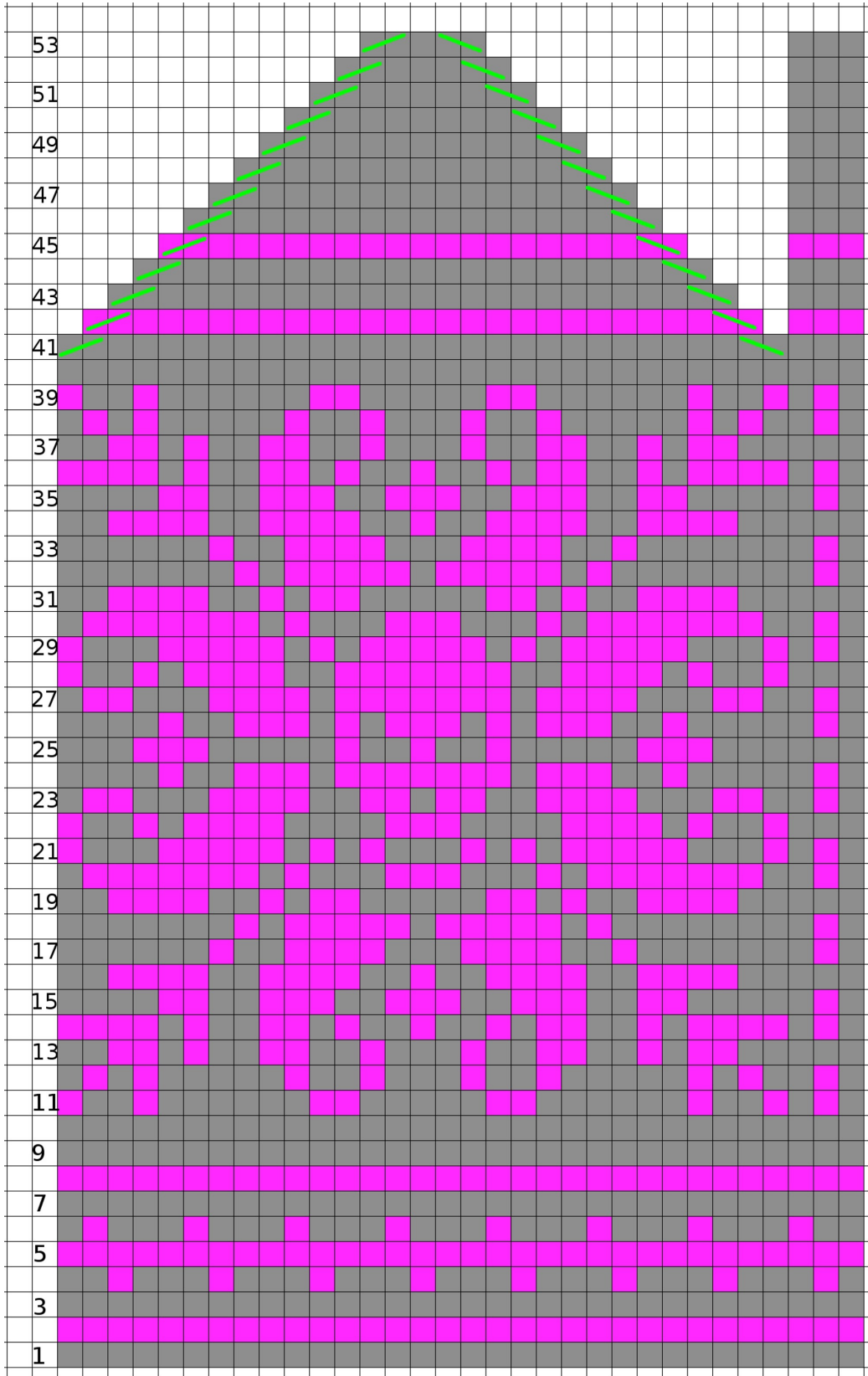
K3Tog 8 times. Cut yarn and pass thru remaining sts.

With smaller needles, pick up provisional ends.

Using contrast color *k10, **K2tog*** around.

Knit stockinette for 3".

Bind off leaving a long tail to sew flap inside hat.



Legend:
K2Tog
SSK