

— — — — —

Pathways

By Erica Harbin

— — — — —



One size: About 7.5"

Materials

Fresh From the Cauldron Merino/Silk Worsted II
(colorway: *The Lot*), 1 skein
16" US#7 circular needle
4 US#7 DPNs
Cable needle
Tapestry needle
Stitch marker

Gauge: 4 sts and 7 rows = 1" in stockinette stitch
using size 7 needles

Special Skills: Knitting in the round, cables

Abbreviations

DPN: Double-pointed needle

CO: Cast on

K: Knit

P: Purl

K2tog: knit two together

P2tog: purl two together

SSK: slip next st as if to knit, slip following st as if to purl, knit these slipped sts together

C4F: Slip next two sts to cable needle and hold in front, K next two sts, K 2 sts from cable needle

C4B: Slip next two sts to cable needle and hold in back, K next two sts, K 2 sts from cable needle

st(s): stitch(es)

Pattern

Using size 7 circular needles CO 80 sts loosely, using the long-tail method or any moderately stretchy cast-on method desired. Join for working in the round and place marker to indicate beginning of round.

Work P2K2 ribbing for 1.5" (about 7 rounds).

Begin main body of the hat using the written directions or Chart A (remembering to repeat each row of the chart twice per round). **Note:** the first two purl sts of this section should line up with two purl sts from the ribbing section. To read this chart while knitting in the round, read all rows from right to left.

Begin decreases using the written directions or Chart B, switching to DPNs when sts no longer fit around the circular needle. Again, to read this chart while knitting in the round, read all rows from right to left.

This pattern is provided for personal use only. For-profit and commercial uses are prohibited.

Written Instructions

Main Body

Just a quick overview of how the hat is constructed... The main body of the hat has alternating panels of purl sts and either stockinette stitch, cables, or seed stitch. The sequence is as follows: purl 2, 5-st stockinette section, purl 2, 8-st cable section, purl 2, 5-st stockinette section, purl 2, 12-st seed stitch section framed by a knit stitch on each side. This sequence is repeated a second time for the other side of the hat.

Round 1: *P2, K5, P2, K8, P2, K5, P2, K2, (P1, K1 6 times)*. Repeat between * * once more.
Round 2: *P2, K5, P2, K8, P2, K5, P2, K1, (P1, K1 6 times), K1*. Repeat between * * once more.
Round 3: *P2, K5, P2, C4F twice, P2, K5, P2, K2, (P1, K1 6 times)*. Repeat between * * once more.
Round 4: *P2, K5, P2, K8, P2, K5, P2, K1, (P1, K1 6 times), K1*. Repeat between * * once more.
Round 5: *P2, K5, P2, K8, P2, K5, P2, K2, (P1, K1 6 times)*. Repeat between * * once more.
Round 6: *P2, K5, P2, K2, C4B, K2, P2, K5, P2, K1, (P1, K1 6 times), K1*. Repeat between * * once more.

Repeat rounds 1-6 four more times (five times total). Then repeat rounds 1-3 again. Proceed to decreases.

Decreases

Round 1: *P2tog, K5, P2tog, K8, P2tog, K5, P2tog, (K1, P1 6 times), K2*. Repeat between * * once more.
Round 2: *P, K5, P, K8, P, K5, P, K2, (P1, K1 6 times)*. Repeat between * * once more.
Round 3: *P, SSK, K3, P, K2, C4B, K2, P, K3, K2tog, P, SSK, (K1, P1 5 times), K2tog*. Repeat between * * once more.
Round 4: *P, K4, P, K8, P, K4, P, (K1, P1 5 times), K2*. Repeat between * * once more.
Round 5: *P, SSK, K2, P, K8, P, K2, K2tog, P, SSK, (P1, K1 4 times), K2tog*. Repeat between * * once more.
Round 6: *P, K3, P, K8, P, K3, P, K2, (P1, K1 4 times)*. Repeat between * * once more.
Round 7: *P, SSK, K, P, SSK, K4, K2tog, P, K, K2tog, P, SSK, (K1, P1 3 times), K2tog*. Repeat between * * once more.
Round 8: *P, K2, P1, K6, P1, K2, P1, (K1, P1 3 times), K2*. Repeat between * * once more.
Round 9: *P1, SSK, P1, SSK, K2, K2tog, P1, K2tog, P1, SSK, (P1, K1 twice), K2tog*. Repeat between * * once more.
Round 10: *P1, K1, P1, K4, P1, K1, P1, K2, (P1, K1 twice)*. Repeat between * * once more.
Round 11: *P1, SSK twice, K2tog twice, P1, SSK, K1, P1, K2tog*. Repeat between * * once more.
Round 12: K2tog 10 times.

Finishing

Using a tapestry needle, thread yarn through remaining sts and pull closed. Weave in all ends. Block lightly if desired.

Alternative Options

- The hat used in the show appears to have been knit flat and then seamed up the back, which is an alternative option for those who prefer a hat that looks just like the one Emma wore on the show.








- The cable section may be substituted with cables on every 4th row, which will result in a looser braid. This option may work better using a worsted yarn with a slightly looser twist, or perhaps a bulky weight yarn. To use this option, use 4 repeats of Chart C instead of 5.5 repeats of Chart A for the main body, then follow with the decreases.



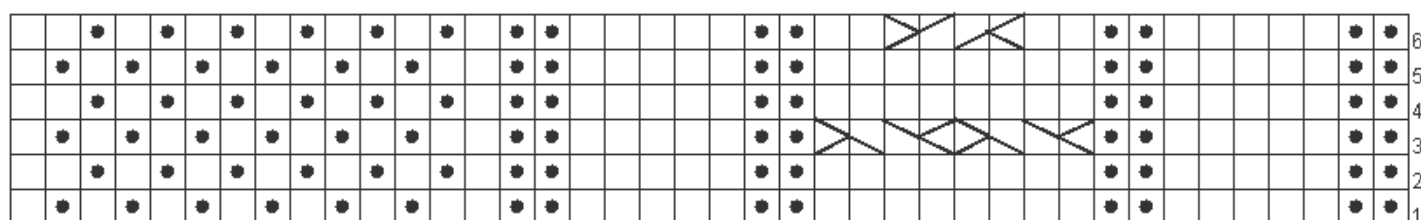
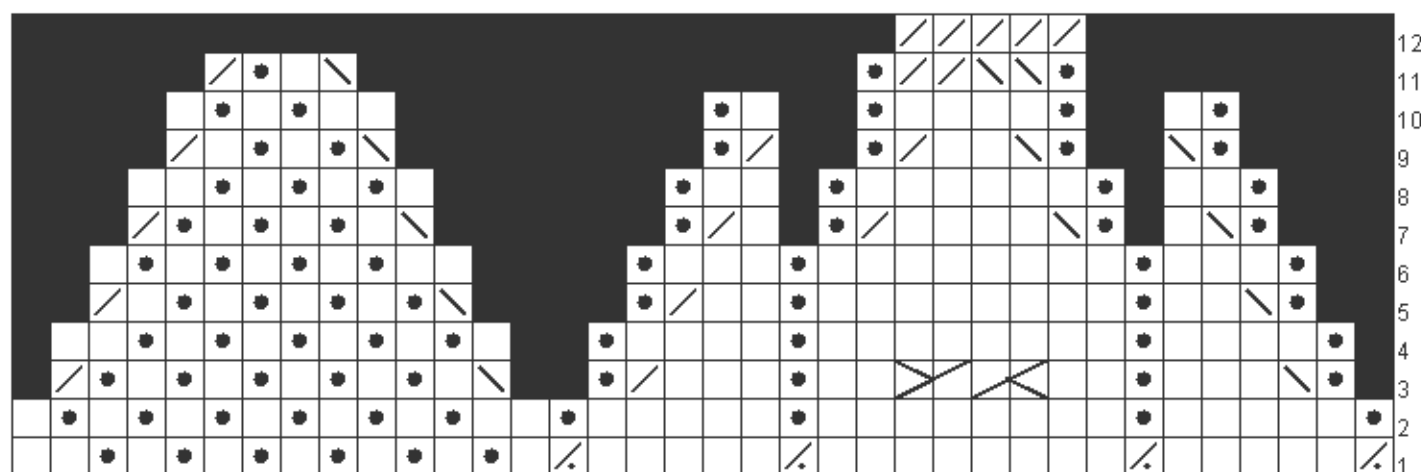
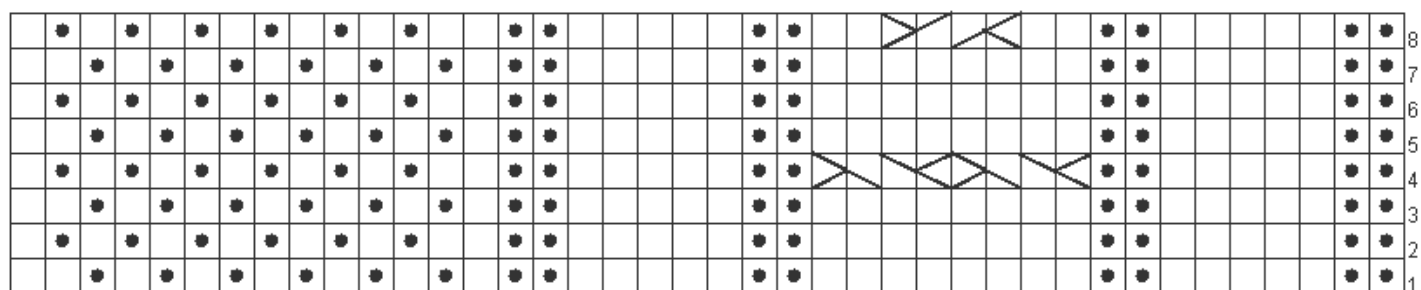
- The seed stitch panel may be replaced by a moss stitch panel for a “softer” appearance.



Legend for Chart Symbols

	knit 1		p2tog
	purl 1		C4F
	k2tog		C4B
	ssk		

**These charts only show half of each round (40 sts, one side of the hat).
Follow each row twice per round (80 sts total).**

Chart A**Chart B****Chart C**

This pattern is provided for personal use only. For-profit and commercial uses are prohibited.