



Henry gets Ahead

Hold onto your hat, this one's a challenge! This hat was designed to match Henry, Mareike Sattler's scarf design that was published in Knitty, Fall 2007.* It's a unisex hat that displays a pattern rich with a herringbone texture. It is knit flat in 8 wedges that are shaped with short rows. Although a fingering weight yarn is used, the resulting fabric is tightly woven and extremely warm. This is an interesting project that uses some advanced techniques for the cast on and final join.

Skills used are short rows, wrap & turn and slipped stitches. Tutorial on provisional cast on and Russian grafting is included. Both charted and written instructions are provided.

Difficulty: Advanced

Head circumference: 22-24"

Finished measurement: 21"

Hat height: 8.25"

* Used with permission of Mareike Sattler.

Materials

Yarn Miss Babs Yummy Superwash Monochrome Sock & Baby Yarn – 2 ply Superwash (100% Merino Wool, 400 yds (366 m)/4 oz (100 g) Wheaten), 250 yds

Gauge 28 sts, 36 rows = 4" in St st

(Note, for many knitting projects row gauge is not crucial, but due to the constructions of this hat, it is important.)

Needles US 3 (3.25 mm) circular, US 2 (2.75 mm) for picking up provisional sts (or any needle size that gives correct gauge on larger needles)

Notions Stitch markers, crochet hook, waste yarn

Definitions

BO: Bind off

CO: Cast on

LH: Left hand

Ndl(s): Needle(s)

P-wise (purl-wise): Insert needle into next st from right to left.

PM: Place marker

Rem: Remaining

Rep: Repeat

RH: Right hand

RS: Right side. In St st, this is the knit side.

Sl (Slip): Move stitch from left needle to right needle k-wise without working the stitch.

SM: Slip marker

Wiyb: With yarn held in back

Wiyf: With yarn held in front

St(s): Stitch(es)

WS: Wrong side. In St st, this is the purl side.

Stitch Glossary

w&t (Wrap and turn)

(Used on Row 35 of Herringbone Pattern) Sl the next st p-wise onto RH ndl; bring working yarn to front of work; replace slipped st back onto LH ndl. Turn and begin working back in the other direction. See instructions below for hiding the wrapped stitch on the next row.

Hiding wrapped stitch

(Used on Row 37 of Herringbone Pattern) Insert ndl under the wrap and then into the leg of st and knit them together.

Crochet Provisional Cast On

See picture tutorial on page 5.

Russian Grafting Using Crochet Hook

See picture tutorial on page 6.

Herringbone Pattern (See charted instructions on page 4)

Tip: The first stitch on every WS row is slipped wyif so that the short row curve is smoother.

Row 1 (RS): K1, sl1 wyif, k1, SM, *k2, sl2 wyif. Rep from * until 3 sts rem, k1, turn.

Row 2: Sl1 wyif, p1, *sl2 wyib, p2. Rep from * until 6 sts rem, sl2 wyib, p1, SM, sl1 wyif, k1, sl1 wyif.

Additional patterns by Sami Kaplan are available online at www.fabuknits.com.

Row 3: K1, sl1 wyif, k1, SM, *sl2 wyif, k2. Rep from * until 7 sts rem, sl2 wyif, k1, turn.

Row 4: Sl1 wyif, p1, *sl2 wyib, p2. Rep from * until 4 sts rem, p1, SM, sl1 wyif, k1, sl1 wyif.

Row 5: K1, sl1 wyif, k1, SM, *k2, sl2 wyif. Rep from * until 7 sts rem, k1, turn.

Row 6: Sl1 wyif, p1, *sl2 wyib, p2. Rep from * until 6 sts rem, sl2 wyib, p1, SM, sl1 wyif, k1, sl1 wyif.

Row 7: K1, sl1 wyif, k1, SM, *sl2 wyif, k2. Rep from * until 11 sts rem, sl2 wyif, k1, turn.

Row 8: Sl1 wyif, p1, *sl2 wyib, p2. Rep from * until 4 sts rem, p1, SM, sl1 wyif, k1, sl1 wyif.

Row 9: K1, sl1 wyif, k1, SM, *k2, sl2 wyif. Rep from * until 11 sts rem, k1, turn.

Row 10: Sl1 wyif, p1, *sl2 wyib, p2. Rep from * until 6 sts rem, sl2 wyib, p1, SM, sl1 wyif, k1, sl1 wyif.

Row 11: K1, sl1 wyif, k1, SM, *sl2 wyif, k2. Rep from * until 15 sts rem, sl2 wyif, k1, turn.

Row 12: Sl1 wyif, p1, *sl2 wyib, p2. Rep from * until 4 sts rem, p1, SM, sl1 wyif, k1, sl1 wyif.

Row 13: K1, sl1 wyif, k1, SM, *sl2 wyif, k2. Rep from * until 15 sts rem, turn.

Row 14: Sl1 wyif, *sl2 wyib, p2. Rep from * until 6 sts rem, sl2 wyib, p1, SM, sl1 wyif, k1, sl1 wyif.

Row 15: K1, sl1 wyif, k1, SM, *k2, sl2 wyif. Rep from * until 19 sts rem, k2, turn.

Row 16: Sl1 wyif, *sl2 wyib, p2. Rep from * until 4 sts rem, p1, SM, sl1 wyif, k1, sl1 wyif.

Row 17: K1, sl1 wyif, k1, SM, k1, sl1 wyif, k1, *sl2 wyif, k2. Rep from * until 19 sts rem, turn.

Row 18: Sl1 wyif, *sl2 wyib, k2. Rep from * until 6 sts rem, sl2 wyib, p1, SM, sl1 wyif, k1, sl1 wyif.

Row 19: K1, sl1 wyif, k1, SM, *k2, sl2 wyif. Rep from * until 23 sts rem, k2, turn.

Row 20: Sl1 wyif, *sl2 wyib, p2. Rep from * until 4 st rem, p1, SM, sl1 wyif, k1, sl1 wyif.

Row 21: K1, sl1 wyif, k1, SM, *sl2 wyif, k2. Rep from * until 23 sts rem, turn.

Row 22: Sl1 wyif, *sl2 wyib, p2. Rep from * until 4 sts rem, sl2 wyib, p1, SM, sl1 wyif, k1, sl1 wyif.

Row 23: K1, sl1 wyif, k1, SM, *sl2 wyif, k2. Rep from * until 27 sts rem, k2, turn.

Row 24: Sl1 wyif, *sl2 wyib, p2. Rep from * until 4 st rem, p1, SM, sl1 wyif, k1, sl1 wyif.

Row 25: K1, sl1 wyif, k1, SM, *k2, sl2 wyif. Rep from * until 23 sts rem, k1, turn.

Row 26: Sl1 wyif, p1, *sl2 wyib, p2. Rep from * until 6 sts rem, sl2 wyib, p1, SM, sl1 wyif, k1, sl1 wyif.

Row 27: K1, sl1 wyif, k1, SM, *sl2 wyif, k2. Rep from * until 23 sts rem, sl2 wyif, k1, turn.

Row 28: Sl1 wyif, p1, *sl2 wyib, p2. Rep from * until 4 sts rem, p1, SM, sl1 wyif, k1, sl1 wyif.

Row 29: K1, sl1 wyif, k1, SM, *k2, sl2 wyif. Rep from * until 19 sts rem, k1, turn.

Row 30: Sl1 wyif, p1, *sl2 wyib, p2. Rep from * until 6 sts rem, sl2 wyib, p1, SM, sl1 wyif, k1, sl1 wyif.

Row 31: K1, sl1 wyif, k1, SM, *sl2 wyif, k2. Rep from * until 19 sts rem, sl2 wyif, k1, turn.

Row 32: Sl1 wyif, p1, *sl2 wyib, p2. Rep from * until 4 sts rem, p1, SM, sl1 wyif, k1, sl1 wyif.

Row 33: K1, sl1 wyif, k1, SM, *k2, sl2 wyif. Rep from * until 15 sts rem, k1, turn.

Row 34: S11 wyif, p1, *sl2 wyib, p2. Rep from * until 6 sts rem, sl2 wyib, p1, SM, sl1 wyif, k1, sl1 wyif.

Row 35: K1, sl1 wyif, k1, SM, *sl2 wyif, k2. Rep from * until 16 sts rem, sl2 wyif, k1, w&t.

Row 36: S11 wyif, p1, *sl2 wyib, p2. Rep from * until 4 sts rem, p1, SM, sl1 wyif, k1, sl1 wyif.

Row 37: K1, sl1 wyif, k1, SM, *sl2 wyif, k2. Rep from * until 15 sts rem, sl2 wyif, k1, hide wrapped st, turn.

Row 38: S11 wyif, *sl2 wyib, p2. Rep from * until 6 sts rem, sl2 wyib, p1, SM, sl1 wyif, k1, sl1 wyif.

Row 39: K1, sl1 wyif, k1, SM, *k2, sl2 wyif. Rep from * until 11 sts rem, k2, turn.

Row 40: S11 wyif, *sl2 wyib, p2. Rep from * until 4 sts rem, p1, SM, sl1 wyif, k1, sl1 wyif.

Row 41: K1, sl1 wyif, k1, SM, *sl2 wyif, k2. Rep from * until 7 sts rem, turn.

Row 42: S11 wyif, *sl2 wyib, p2. Rep from * until 6 sts rem, sl2 wyif, p1, SM, sl1 wyif, k1, sl1 wyif.

Row 43: K1, sl1 wyif, k1, SM, *k2, sl2 wyif. Rep from * until 7 sts rem, k2, turn.

Row 44: S11 wyif, *sl2 wyib, p2. Rep from * until 4 sts rem, p1, SM, sl1 wyif, k1, sl1 wyif.

Row 45: K1, sl1 wyif, k1, SM, *sl2 wyif, k2. Rep from * until 3 sts rem, turn.

Row 46: S11 wyif, *sl2 wyib, p2. Rep from * until 6 sts rem, sl2 wyib, p1, SM, sl1 wyif, k1, sl1 wyif.

Pattern A

Row 1: K1, sl1 wyif, k1, SM, *k2, sl2 wyif. Rep from * until 1 st rem, turn.

Row 2: S11 wyif, *sl2 wyib, p2. Rep from * until 4 sts rem, p1, SM, sl1 wyif, k1, sl1 wyif.

Pattern B

Row 1: K1, sl1 wyif, k1, SM, *k2, sl2 wyif. Rep from * until 1 st rem, k1.

Row 2: S11 wyif, p1, *sl2 wyib, p2. Rep from * until 4 sts rem, p1, SM, sl1 wyif, k1, sl1 wyif.

Pattern

CO 70 sts using crochet provisional cast on method. Place marker after 3rd st to denote slip stitch rib brim.

Step 1: Work rows 1-46 of Herringbone pattern, followed by rows 1-2 of Pattern A.

Step 2: Work rows 1-46 of Herringbone pattern, followed by rows 1-2 of Pattern B.

Work Steps 1 and 2 four times, ending on Step 2 after row 1 of Pattern B. The herringbone pattern is used 8 times and Pattern A and B 4 times each. Note that the crown stitch is only worked 4 times in the entire pattern.

Finishing

Carefully unravel waste yarn from provisional CO while placing each live st onto smaller ndl. Using a smaller ndl makes it easier to pick up the live sts as they are released. Note that you will have 69 sts; one fewer st than the number of CO sts.

Slide sts on larger ndl to opposite end of working yarn and use Russian Grafting to join live sts.

Block and weave in ends.

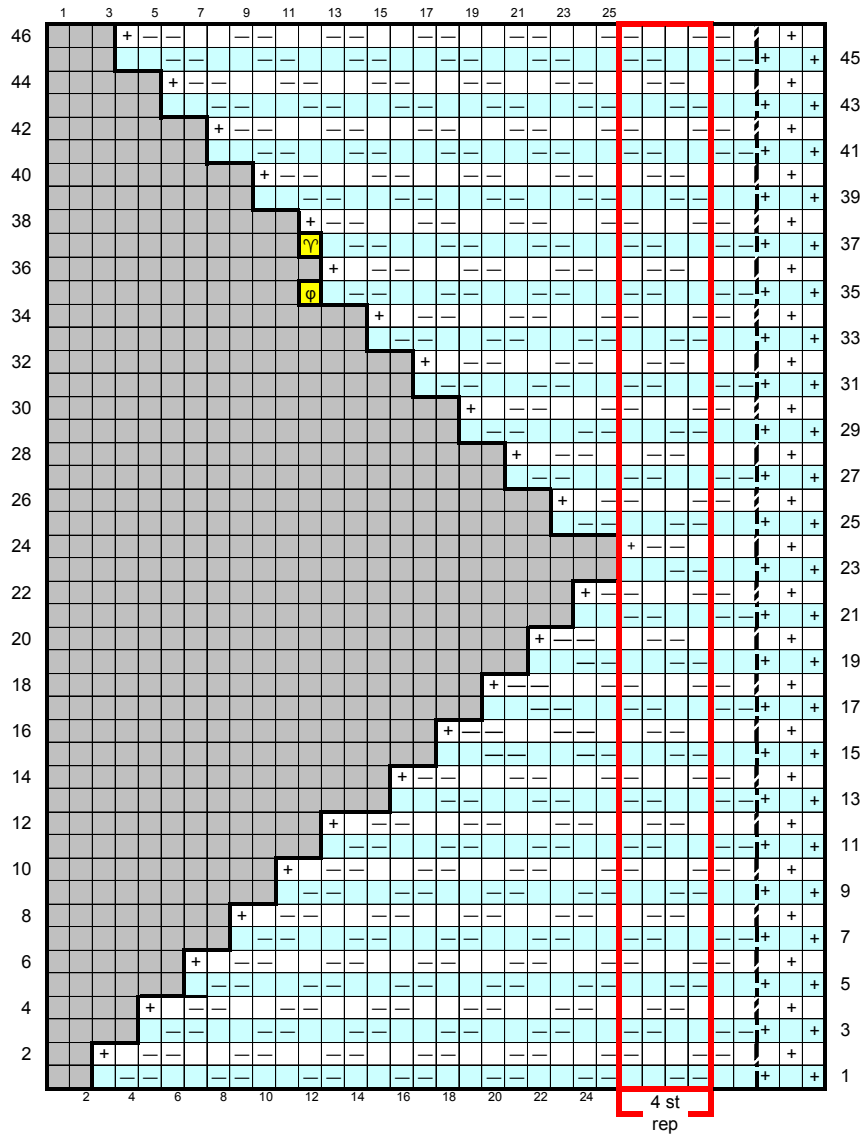
Copyright and Usage Notice

This pattern was created and written by Sami Kaplan, and is intended for personal use only [that is, you may use the finished items for yourself or for gifts]. The pattern is not to be distributed, for free or for money, in any format, without the permission of Sami Kaplan. Items created from this pattern are not to be sold or used for commercial gain without the permission of Sami Kaplan. If you are interested in working out an agreement to distribute this pattern or to sell products made from this pattern, please contact the designer at info@fabuknits.com.

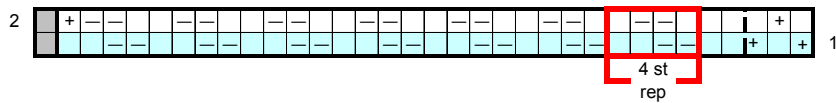
© 2011, Sami Kaplan (FabuKnits).



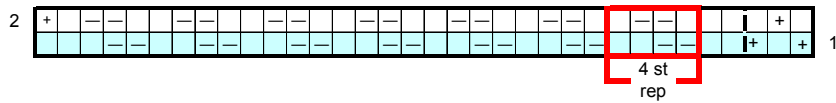
Herringbone Pattern



Pattern A



Pattern B



- | | | |
|-------------------------------------|----------------------------|---------------------|
| On RS, sl1 wyif.
On WS, sl1 wyib | On RS knit,
on WS purl. | Hide wrapped stitch |
| Stitch not worked* | Sl st wyif | w&t |

* On most charts, a grey square represents a stitch that is not yet there. In this pattern, the grey represents stitches that are not worked on that row. When following the pattern via chart, keep in mind that you will be knitting repeats of the herringbone stitch up to a stitch or two before the grey-area... as long as you pay attention, you'll see how the pattern emerges.

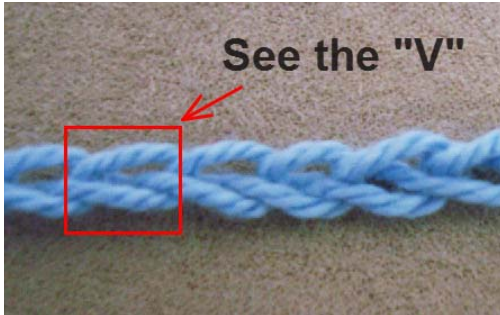
Additional patterns by Sami Kaplan are available online at www.fabuknits.com.

Crochet Provisional Cast On

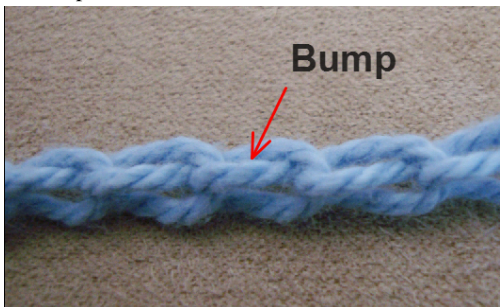
With waste yarn and crochet hook, begin with a slip knot. Create cable chain by pulling working yarn through the loop on ndl. Rep until you have a few more links in the chain than the desired number of sts you need to pick up. Cut yarn and bring through last loop. Tie a knot at end of yarn that was brought through last loop. When unraveling, you will begin at the end with the knot.



Lay the chain on flat surface and look closely. On one side of the chain you will see little "V"s that sort of look like knit sts.



On the other side you will see small bumps that sort of look like purl bumps.

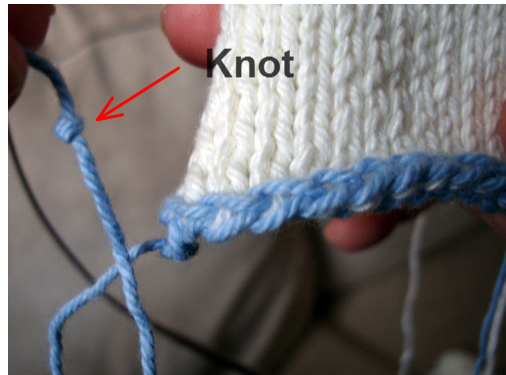


You will pick up sts through these bumps, which makes it easier to unravel the chain later to expose the live sts.

With working yarn and knitting ndl, pick up and knit the desired number of sts through the bumps on the crochet chain.



Once body of hat is finished, to release live sts for join, begin unraveling yarn at end with the knot.



As each live st is released, place it on your ndl.

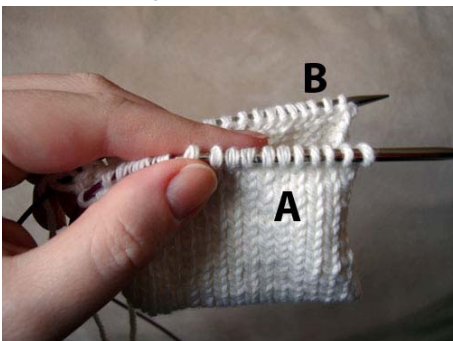


Russian Grafting Using Crochet Hook

This technique is used to join 2 sets of live sts and the result is virtually unnoticeable in the finished project.



Ndl A has sts you've been working with. Ndl B has the picked up sts from the provisional CO. Slide sts on both ndls in the direction of the brim of the hat (section that has the slip stitch rib). Hold Ndl A closer to you with RS facing you, and Ndl B in back so that the wrong sides face each other.



Slip first st from Ndl A onto crochet hook as if to knit.



*Slip first st from Ndl B onto crochet hook. There are now 2 sts on the crochet hook.



Pull the second loop through the first loop on the hook.



Slip st from Ndl A onto crochet hook and pull it through the loop that's already on the hook.



Rep from * until all sts are worked.



Finally, pull working yarn through last st on hook. The resulting join shows as a little braid on Stockinette fabric. But the join is almost undetectable on the herringbone pattern.



Additional patterns by Sami Kaplan are available online at www.fabuknits.com.