

Ewe Want Luxury

Scarf design by Kim Degener

Featured Yarn: At Knits End 100% Cashmere 354 yds. Laceweight
Colorway: I Put a Spell on Ewe

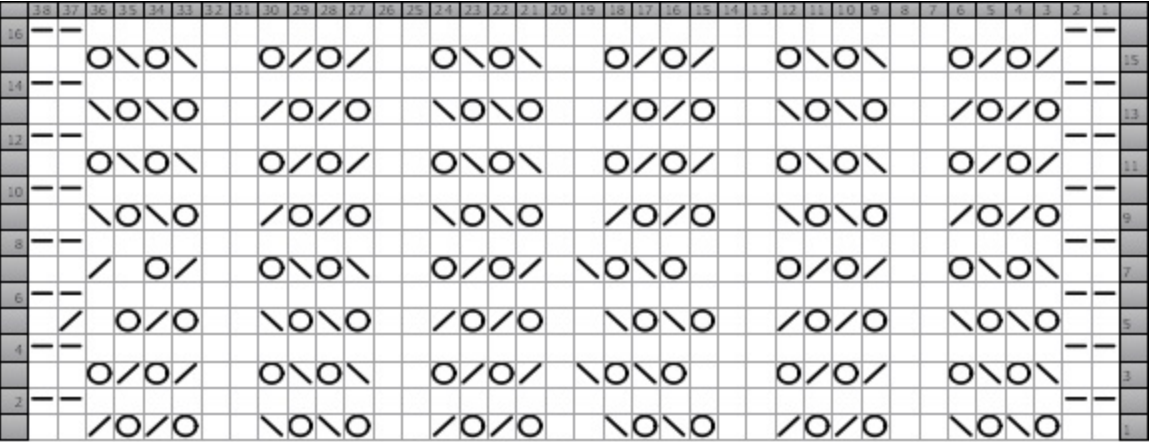
I designed this scarf specifically to show off my beautiful cashmere. I wanted to use every last bit of this precious fiber, and set it off in a lacy, quick-to-knit accessory. The design allows you to make a scarf as long or short as you desire, and can be made wider. Ideal for holiday knitting or birthday giving, and irresistible to knit for yourself. I hope you enjoy!

Adjust needle size for your chosen yarn:

- Needle size 7 for lace weight
- Needle size 9 for fingering weight
- Needle size 11 for worsted weight

Using long tail cast on, cast on 38 stitches.
Knit 2 rows, and begin chart.

Repeat Chart until yarn is almost gone, or until chart reaches the desired length, then knit 2 rows.
Bind off and block.





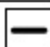


Key:	
	Knit k
(RS) Knit (WS) Purl	
	Knit 2 Together k2tog
(RS) Knit 2 stitches together (WS) Purl 2 Together	
	Purl p
(RS) Purl (WS) Knit	
	Slip Slip Knit ssk
(RS) slip, slip, knit slipped sts together (WS) slip, slip, purl slipped sts together	
	Yarn Over yo
(RS) Yarn Over (WS) Yarn Over	

Chart:

Cast on 38 stitches

Row 1 (RS): k2, yo, ssk, yo, ssk, k2, yo, k2tog, yo, k2tog, k2, yo, ssk, yo, ssk, k2, yo, k2tog, yo, k2tog, k2, yo, ssk, yo, ssk, k2, yo, k2tog, yo, k2tog, k2

Row 2 (WS): k2, p34, k2

Row 3 (RS): k2, ssk, yo, ssk, yo, k2, k2tog, yo, k2tog, yo, k3, yo, ssk, yo, ssk, k1, k2tog, yo, k2tog, yo, k2, ssk, yo, ssk, yo, k2, k2tog, yo, k2tog, yo, k2

Row 4 (WS): k2, p34, k2

Row 5 (RS): k2, yo, ssk, yo, ssk, k2, yo, k2tog, yo, k2tog, k2, yo, ssk, yo, ssk, k2, yo, k2tog, yo, k2tog, k2, yo, ssk, yo, ssk, k2, yo, k2tog, yo, k1, k2tog, k1

Row 6 (WS): k2, p34, k2

Row 7 (RS): k2, ssk, yo, ssk, yo, k2, k2tog, yo, k2tog, yo, k3, yo, ssk, yo, ssk, k1, k2tog, yo, k2tog, yo, k2, ssk, yo, ssk, yo, k2, k2tog, yo, k1, k2tog, k2

Row 8 (WS): k2, p34, k2

Row 9 (RS): k2, yo, k2tog, yo, k2tog, k2, yo, ssk, yo, ssk, k2, yo, k2tog, yo, k2tog, k2, yo, ssk, yo, ssk, k2, yo, k2tog, yo, k2tog, k2, yo, ssk, yo, ssk, k2

Row 10 (WS): k2, p34, k2

Row 11 (RS): k2, k2tog, yo, k2tog, yo, k2, ssk, yo, ssk, yo, k2, k2tog, yo, k2tog, yo, k2, ssk, yo, ssk, yo, k2, k2tog, yo, k2tog, yo, k2, ssk, yo, ssk, yo, k2

Row 12 (WS): k2, p34, k2

Row 13 (RS): k2, yo, k2tog, yo, k2tog, k2, yo, ssk, yo, ssk, k2, yo, k2tog, yo, k2tog, k2, yo, ssk, yo, ssk, k2, yo, k2tog, yo, k2tog, k2, yo, ssk, yo, ssk, k2

Row 14 (WS): k2, p34, k2

Row 15 (RS): k2, k2tog, yo, k2tog, yo, k2, ssk, yo, ssk, yo, k2, k2tog, yo, k2tog, yo, k2, ssk, yo, ssk, yo, k2, k2tog, yo, k2tog, yo, k2, ssk, yo, ssk, yo, k2

Row 16 (WS): k2, p34, k2