

# Kiss Kiss



Sweet treat bags designed by **Keeia Hicks** for **FlorrieMarie**

## Needle

● 1 set of four US2 (2.75mm) double pointed needles or needles to obtain gauge.

## Gauge

● 18 stitches & 22 rows per 2 inches in stockinette stitch.

## Notions

- Ribbon or i-cord for a drawstring
- Darning needle for weaving in ends.

## Finished Measurements

### A.

- 3.5" (8.9cm) at widest point
- 3.5" (8.9cm) long

### B.

- 3.5" (8.9cm) at widest point
- 4" (10cm) long

### C.

- 3.5" (8.9cm) at widest point
- 4" (10cm) long

### D.

- 3.5" (8.9cm) at widest point
- 4" (11cm) long

## Pattern Notes

These darling little pouches got their name from what they were designed to hold, chocolate kisses. However they would also be perfect for delivering a love note or other token of love.

They are knit in fingering weight yarn because that's my weight of preference. If you want a larger pouch there's nothing stopping you from knitting them in DK, worsted or even bulky weight.

The pouches are knit from the bottom up. They are cast on using Judy's magic cast on, the cast on used when knitting toe up socks. All four pouches begin with the same nine rounds, then you switch to the chart of your choice. Each chart will work over 60 stitches, though they each have a varying number of rounds. . There are two options for the drawstring area, an simple eyelet or double knit channel.

Have a happy Valentine's Day!

*XOXO Florrie*

## Suggested Yarns:

The yarn numbers below correspond to the charts on the last two pages.

### Pattern A

#### Brown:

1. Periwinkle sheep “freckles” in truffle 435 yards/100g 85% super wash merino 15% nylon

#### Lt Brown:

2. Anzula Cloud in Rootbeer 80% superwash merino wool, 10% cashmere, 10% nylon 575 yards /114 grams

#### Pinks-From bottom up:

3. Koigu Premium Merino (KPM) Needlepoint Yarn 1184 100% merino 11 yards

4. Koigu Premium Merino (KPM) Needlepoint Yarn 2233

5. Koigu Premium Merino (KPM) Needlepoint Yarn 1100

6. Koigu Premium Merino (KPM) Needlepoint Yarn 1162

7. Koigu Premium Merino (KPM) Needlepoint Yarn 2250

8. Koigu Premium Merino (KPM) Needlepoint Yarn 2231

### Pattern B

#### Lt Brown:

2. Anzula Cloud in Rootbeer

#### Brown:

1. Periwinkle sheep “freckles” in truffle

### Pattern C

#### Pink:

9. Koigu KPPPM in Multi pink/ red 306 fw 100% merino 175 yards/ 50g

#### Brown:

1. Periwinkle sheep “freckles” in truffle

#### Lt Brown :

2. Anzula cloud in Rootbeer

#### Light pink:

8. Koigu Premium Merino (KPM) Needlepoint Yarn 2231

#### Mid pink:

6. Koigu Premium Merino (KPM) Needlepoint Yarn 1162

#### Dark pink:

4. Koigu Premium Merino (KPM) Needlepoint Yarn 2233

### Pattern D

#### Brown:

1. Periwinkle sheep “freckles” in truffle

#### Pink:

9. Koigu KPPPM in Multi pink/ red 306 fw

#### Lt Brown:

2. Anzula Cloud in Rootbeer

## Abbreviations:

**k** - knit

**m1** - make 1, pick up bar between the two stitches, knit twisted

**k2tog** - knit two together

**yo** - yarn over

**ssk** - slip one stitch, then slip the next, put the left needle through the front loops and knit them together.

**increase** - knit through the front and back of the stitch to increase by one stitch.

**double increase** - knit through the front, the back and the front again to increase by two stitches.





## Directions

Cast on 14 stitches using Judy's Magic Cast on method.

Rounds 1-8 are held on two double pointed needles, and worked with a third double pointed needle.

1. Increase by knitting into back and front loop of each stitch. Repeat for all stitches. (28)
2. Double increase into the first stitch, k12, double increase into the next 2 stitches, k12, double increase into the last stitch. (36)
3. K1, m1, k16 m1, k2, m1, k16, m1, k1. (40)
4. K1, m1, k18, m1, k2, m1, k18, m1, k1. (44)
5. K1, m1, k20, m1, k2, m1, k20, m1, k1. (48)
6. K1, m1, k22, m1, k2, m1, k22, m1, k1. (52)
7. K1, m1, k24, m1, k2, m1, k24, m1, k1. (56)
8. K1, m1, k26, m1, k2, m1, k26, m1, k1. (60)

At this point split the stitches evenly over 3 double pointed needles, 20 stitches on each.

9. Knit.

Work the chart of your choice.

Upon completion of the chart finish your pouch using one of the following methods.

## Eyelet

1. Knit.
2. Knit.
3. \* Yo, k2tog, repeat from \* to end.
4. Knit.

5. Knit.

Cast off with loose tension. The edge will undoubtedly roll at this point, but it will flatten out with wet blocking.

## Double Knit Channel

1. Knit.

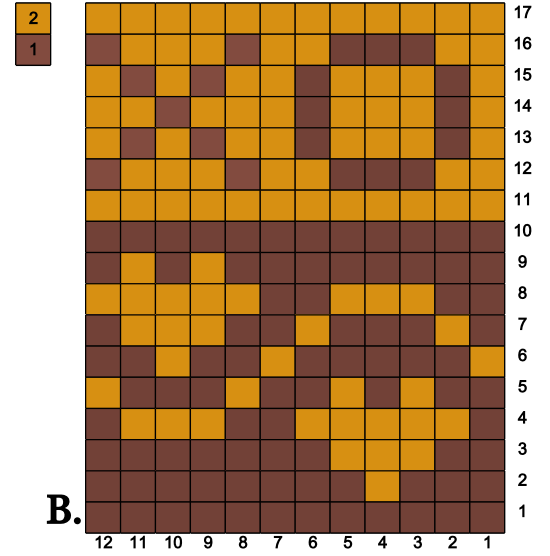
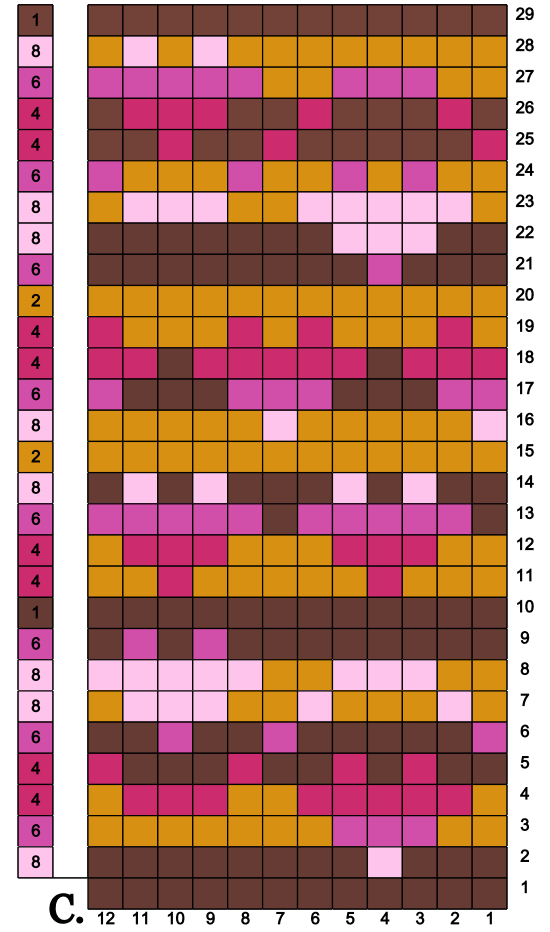
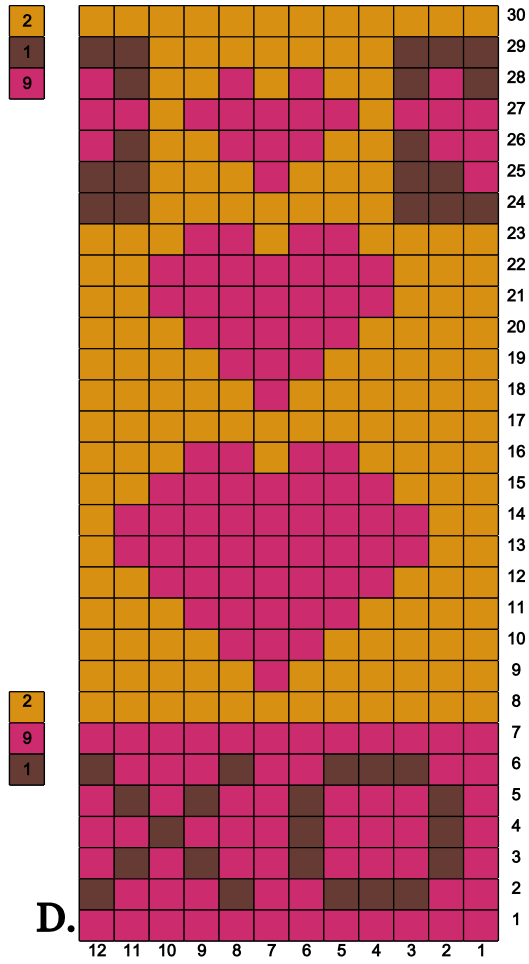
1. Increase by knitting into back and front loop of each stitch. Repeat for all stitches. (120)
2. Work as double knit: Use color A to work the knit sts and color B to work the purl sts. Hold both strands to the back of work for the knit sts, and bring both strands forward to work the purl sts.
3. Turn work without joining to the previous round. This will make the opening for the ribbon or icord. Work back in the other direction. Continue to work in double knit: Knit the knits and purl the purls.
4. \*Ssk, repeat to end of round. Continue working in the round.

5. Knit.

Cast off with loose tension.

Weave in any ends. Soak for at least 15 minutes in tepid water, squeeze water out gently and either dry flat or over a small vase or can to shape it. Once dry, thread eyelets or channel with a ribbon or a 12" i-cord to make a drawstring for your pouch. Fill it with goodies and give it to your love!





A.

