



POPPYS PREMIE HAT

Premature babies loose heat during birth and transportation to the neonatal unit as well as during handling. Cold stress can result in poor growth and increased stay in hospital.

I made this hat reversible so that it would be thicker and therefore, extra warm for a new premature baby. The colours and chart pattern used can be changed to suit the gender of your baby



This hat was designed for the Knitmore Girls Premie Hat Competition 2010

WHAT YOU NEED:-

Yarn for Hat: 4ply in two colours (Yarn A & B). I have used left over Patons 4ply sock yarn.

Needles & Accessories: Size 3.25mm DPN's and 3.25mm circular needle. You will also need a sewing needle to weave in any loose yarn ends.

Knitting Type: Reversible double knitting

Knitting Level: Beginner to Intermediate

PROVISIONAL CAST ON

With DPN's and waste yarn cast on 54 sts and divide across three needles. Join and mark the end of the rnd, change to yarn B and knit two rounds. Join in Yarn A (do not break off Yarn B) and knit two rounds. To make the hem *K1 in Yarn A from the needle, P1 from Yarn B from the provisional cast-on edge, repeat until end round. You should now have a total of 108 sts across the three needles (54 for each yarn). Sometimes it is difficult to pick up the last stitch from the provisional cast on. If this is the case then just cast on a stitch with yarn B at the end to ensure that there are 54 stitches for each yarn. Remove the waste yarn at this stage.

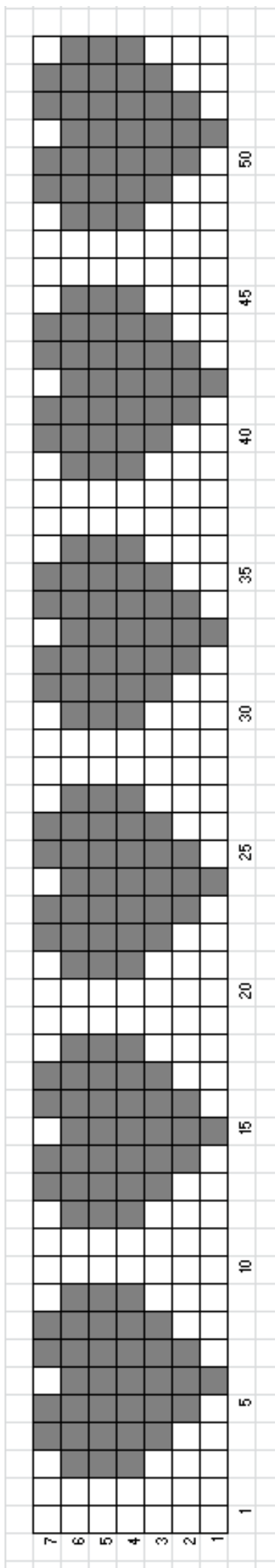
You will now have three rows completed from hem edge. Knit a further 5 rows as before *K1 Yarn A and P1 Yarn B,*repeat to end. You will now have eight rows from hem edge.

CHART

Choose one of the charts and once you have completed all seven rows, knit a further 5 rows as before *K1 Yarn A and P1 Yarn B,*repeat to end. You will now have eight rows from hem edge.

SHAPE CROWN

The crown for each side is knit separately. To do this slip Yarn B sts onto circular needle (making sure to slip a stitch marker between each group of sts from each DPN so that you know which sts go on which



needle) and drop needle and Yarn B down inside the tube of knitting (this is so when you flip the knitting inside out once you have the crown done for Yarn A you will then be able to work on Yarn B). Then working on remaining Yarn A sts (54 sts) on DPN's only complete the following rows.

- Row 1: Knit
- Row 2: *K4, K2tog, *repeat to end.
- Row 3-4: Knit
- Row 5: *K3, K2tog, *repeat to end.
- Row 6-7: Knit
- Row 8: *K2, K2tog, *repeat to end.
- Row 9-10: Knit
- Row 11: *K1, K2tog, *repeat to end
- Row 12-13: Knit
- Row 14: *K2tog, *repeat to end (9sts)

Break off Yarn A, leaving enough to fastening off. Thread yarn through all reminding 9 sts and pull sts together. Don't bind at this stage. Thread remaining length of yarn through as you turn knitting inside out to finish crown section in Yarn B.

Transfer 54 sts on circular needle onto three DPN's (as done for Shape Crown for Yarn A).

Complete Rows 1-14 as for Shape Crown Yarn A but change knit to purl throughout.

Once you have Shape Crown for Yarn B completed break yarn and thread yarn through remaining 9 sts then pull together. You will have both threads together at this stage (Yarn A & B). Bind off together and weave in all loose ends with sewing needle.

Turn the hat inside out again so that Yarn A is shown on outside. However, the hat has been designed to be reversible.

