

# Bitty Cabled Hat

by Heather Cabañas

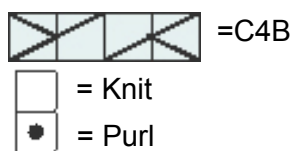
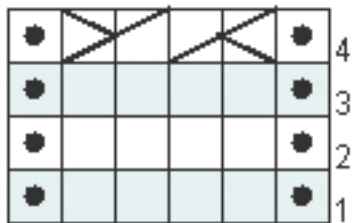


This pattern utilizes a single 4 row cable pattern around the entire hat. The hat is knit in the round, so the chart should be followed from the right side always.

## Cable Pattern

Row 1 – P1, K4, P1  
 Row 2 – P1, K4, P1  
 Row 3 – P1, K4, P1  
 Row 4 – P1, C4B, P1

**C4B:** Slip next 2 sts to cable needle and hold to back of work; k2 from left needle, k2 from cable needle.



Knitting this pattern will create a perfect first hat for a new baby. In sizes micropreemie, preemie and newborn, it will fit new babies of all sizes. Using less than 50g of yarn, this hat is perfect for those quick gifts.

The Bitty Cabled Hat coordinates perfectly with the Bitty Cabled Cardigan which is available in the IDP Section of patterns on [www.knitpicks.com](http://www.knitpicks.com)

**Sizes:** micropreemie [approx. 4lbs] (preemie [approx. 5-6lbs], newborn [approx. 7-10lbs])

**Gauge:** 4.5 sts by 6 rows = 1" in stockinette stitch

**Yarn Requirements:** Knit Picks Comfy Worsted yarn (approx 109 yards/50 grams) in Honeydew 1 (1) balls

**Needles:** Size 7 DPNs or needle needed for your preferred method of small circumference knitting. Adjust needle size if necessary to obtain gauge.

**Notions:** Cable needle, stitch markers, and yarn needle.

