

Lucy's Swedish Snowflake Phone Case

My friend Lucy was in need of a case for her new phone so I made her this one. I hate sewing and avoid it at all costs, which is why this case is knitted in the round on double-pointed needles. The fair-isle pattern is based on a Swedish design that I'd seen – appropriate as Lucy has family in Sweden.



ABBREVIATIONS

k – knit

p – purl

m1 – make one (pick up the strand between two stitches from the front and place on the left needle tip, knit through the back of the loop)

MATERIALS

Yarn – Patons Diploma Gold 4-ply in two colours (you don't need much yarn – I used what I had left over from knitting a pair of socks)

Needles – 2mm double-pointed needles

Notions – stitch marker, 2cm / 0.79 inch button

GAUGE

9 stitches and 9 rows = 2.54cm / 1 inch

SIZE

This case was designed to hold a phone which is 10.72cm by 6.07cm / 4.22 inches by 2.39 inches

Cast-on 19 stitches

Rows 1-6: starting with a knit row, knit 6 rows in stockinette

Row 7: k1, m1, k17, m1, k1 (21 stitches)

Rows 8-10: stockinette

Row 11: k8, bind off 5, knit 8

Row 12: p8, cable cast-on 5, p8

Rows 13-14: stockinette

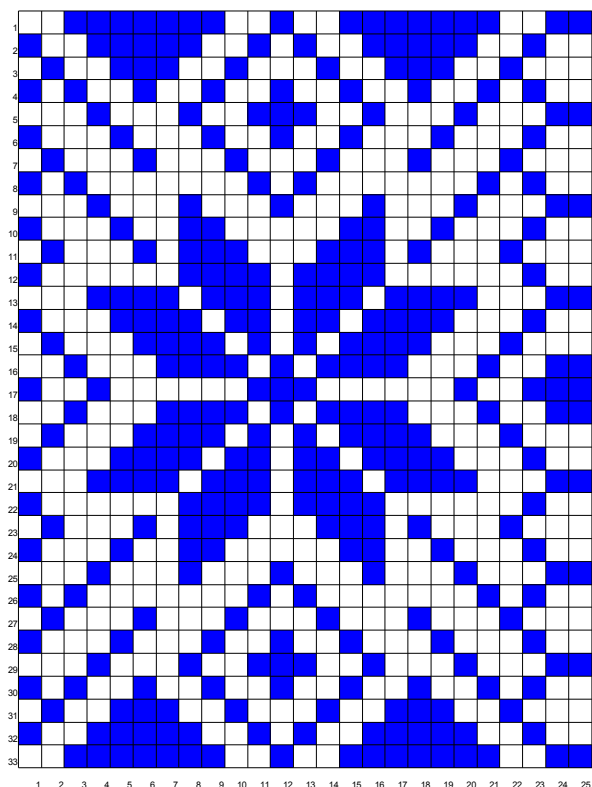
Row 15: k1, m1, k19, m1, k1 (23 stitches)

Rows 16-30: stockinette

Row 31: mark beginning of cast-on and then cast-on 27 stitches (50 stitches), join to begin working in the round

Rows 32-35: knit

Rows 36-69: add second colour and follow chart for 33 rows (chart pattern repeats twice)



Row 70-73: break second colour and knit three rows in first colour

Row 74: knit 48 and then arrange stitches so that you have 2 needles with 25 stitches on each

Weave in ends of second colour and then graft stitches together. Block case and allow to dry. You may wish to fold the flap down and hold it in place with clothes pegs so that it dries in the correct shape.

When the case is dry sew the button on to the front.