

Not So Ugly Duckling

Crochet pattern for intermediate crochet artists.

Hook: E or 3.5 mm

Yarn: Simply Soft - Medium Weight

Yarn A - Simply Soft Aqua Mist

Yarn B - Simply Soft Melon

Yarn C - Simply Soft Black

Gauge: Gauge isn't vitally important, but the stitches do need to be tight enough so that whatever stuffing you use doesn't peek out.

Final Dimensions: about 5.5" x 4.5" x 3



Techniques and Terminology

ch = chain

sl = slip stitch

sc = single crochet

dc = double crochet

Amigurumi Notes:

I highly recommend working top down, and attaching the bits and pieces as you go, where stated. This is the order in which each piece is written below.

When attaching pieces together, I like to put stuffing in whatever part I have finished when deciding where to stitch something. This way you have a better idea of what it will look like when finished. Remove the stuffing when sewing though or you'll get it in your stitches.

Directions

Fluff on Top

Using Yarn A

leaving a 2 inch tail, chain 4

sl into second chain from hook, sl into each of the next 2,

chain 5, sl into second chain from hook, sl into each of the next 3

chain 4, sl into second from chain, sl into each of the next 2

tie off, leave 2 inch tail

set aside

Bill

Using Yarn B

chain 7, sc into second, sc across, sl join to first (makes a circle)

(6)

ch 1, (do not turn) sc around, sl join

(6)

tie off, leaving tail about 6 inches

flatten piece with join seem centered (this is on the bottom)

using tail, stitch this end closed

set aside

Head

Using Yarn A

Round 1:

sc 6 into a magic circle (don't tie the circle off yet)

(6)

Round 2:

increase in each

(12)

Round 3:

*sc, increase, repeat from * around

(18)

Round 4:

*sc 2, increase, repeat from * around

(24)

Round 5:

*sc 3, increase, repeat from * around

(30)

~Attach Fluff:

Pull both tails through magic circle. Tighten and tie off the circle.

Using tails, stitch fluff securely. (How much or how little you do this is up to your discretion. Just stitch until it looks nice, and won't fall off.)

Tie off ends on the inside.

Round 6:

sc in each around (30)

Round 7:

*sc 4, increase, repeat from * around (36)

Rounds 8-12:

sc in each around (36)

Round 13:

*sc 4, decrease, repeat from * around (30)

Round 14:

sc in each around (30)

Round 15:

*sc 3, decrease, repeat from * around (24)

Round 16:

*sc 2, decrease, repeat from * around (18)

~Attach Bill

Stitch open end of bill to head.

(Make sure it's centered in line with the fluff.)

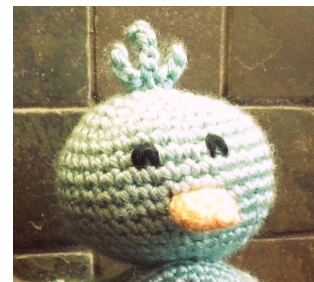
Tie off ends on the inside.

~Stitch on Eyes

With Yarn C stitch eyes above and on either side of the bill.

The shape of the eyes is up to you, but single crochet stitches lend very well to the upside down "V" stitch eyes.

Tie off ends on the inside.



Round 17:

*sc, decrease, repeat from * around (12)

fasten off, leave tail

Wings (Make Two)

Using Yarn A

leaving a 4 inch tail, chain 4

Row 1:

sc into second, sc in each across (3)

Row 2:

increase, sc, increase (5)

Row 3:

increase, sc 3, increase (7)

Rows 4-6:

sc across (7)

Row 7:

decrease, sc 5	(6)
Row 8:	
sc across	(6)
Row 9:	
decrease, sc 4	(5)
Row 10:	
sc across	(5)
Row 11:	
decrease, sc 3	(4)
Row 12:	
sc across	(4)
Row 13:	
decrease, sc 2	(3)
Row 14:	
decrease, sc	(2)
Row 15:	
decrease	(1)
Row 16:	
sc	(1)
tie off. leave tail about 6 inches.	
set aside	

Feet (Make Two)

Using Yarn B

Round 1:	
into a magic circle: [sc 6, ch 1, dc 3, ch 1, join to first sc with sl]	(9)
Round 2:	
ch 2 (turn), dc into last dc of Round 1, dc 2 into next, [dc, ch 2, sl] into next	(6)
fasten off. leave tail.	
set aside	

Body (This piece is worked horizontally, working front to back instead of top to bottom.)

Using Yarn A

Round 1:

sc 6 into a magic circle (6)

Round 2:

increase in each (12)

Round 3:

*sc, increase, repeat from * around (18)

Round 4:

sc in each around (18)

Round 5:

*sc 2, increase, repeat from * around (24)

Round 6:

sc in each around (24)

Round 7:

*sc 3, increase, repeat from * around (30)

Rounds 8-14:

sc in each around (30)

Round 15:

*sc 3, decrease, repeat from * around (24)

Rounds 16-19:

sc in each around (24)

~Attach Head

Fill head with stuffing and stitch head on.

Tie off ends inside the body.

~Attach Feet

Stitch feet to the bottom slightly farther

back than where you attached the head.

Only stitch through the magic circle of the feet.

(Area marked in red.)

Tie off ends inside the body.

~Attach Wings

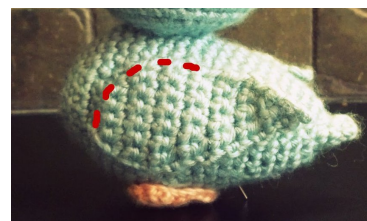
Stitch a wing to either side.

Do not stitch all the way around.

Only stitch front and partial top.

(Area marked in red.)

Tie off ends inside the body.



Round 20:

*sc 4, decrease, repeat from * around (20)

Round 21:	
sc in each around	(20)
Round 22:	
*sc 3, decrease, repeat from * around	(16)
Round 23:	
sc in each around	(16)
Round 24:	
*sc 2, decrease, repeat from * around	(12)
Round 25:	
sc in each around	(12)
~Finish stuffing the body.	
Round 26:	
decrease around	(6)
Round 27:	
sc in each around	(6)

Squish the last round flat and stitch closed. (Now you have a tail!)
 Fasten off this last piece of yarn and it's the only one you have to bury.

Other Views:

