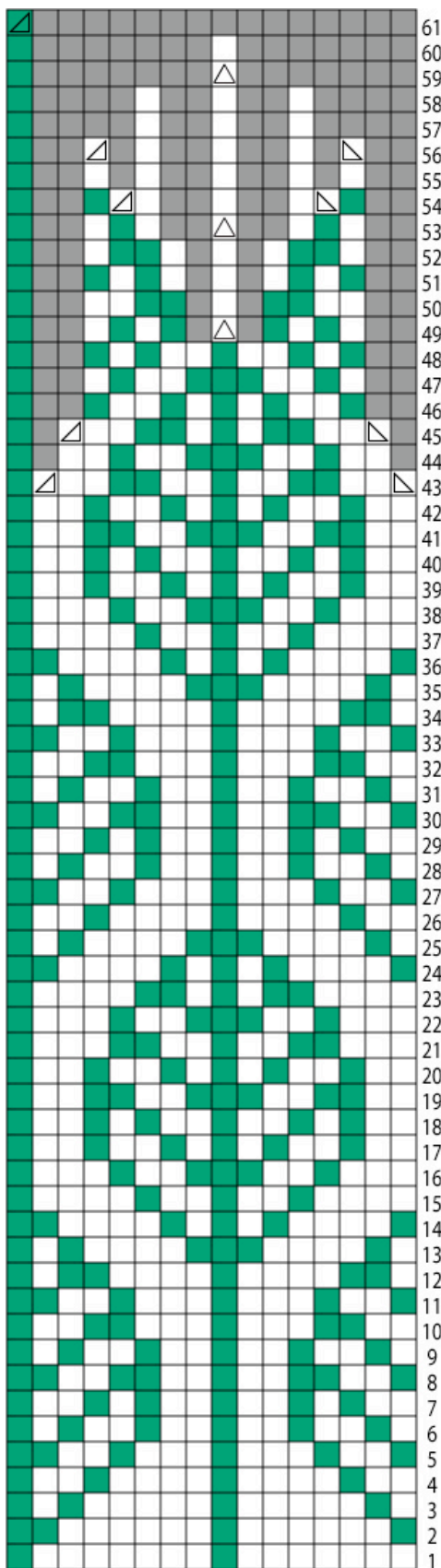


ifandany designs

As The Leaves Begin to Fall

by eliza jarvi





Materials: 2 colors of sport weight yarn, approx. 150 yards of the main color, and 75 of the contrasting color.

Needles: US size 4 (3.5 mm) and 6 (4.0 mm).

Gauge: 24 sts x 25 rows is 4"x4" or 10cm x 10cm, knitting fair isle with the US 6 (4mm)

Finished measurements: brim 19", body of hat 22", length 11"

-Cast on 96 sts*, place marker for beginning of round.

*Note: I use a cable cast on for hats, and knit one row flat in stockinette, then connect in the round. If you do this, you'll only knit 2 extra rows of stockinette.

-Knit 3 rows in stockinette.

-Switch to knit 2, purl 1 ribbing for 10 rows.

-*Knit 2, kfb*, repeat for setup row. You should now have 128 stitches.

-Begin working chart at row 1 (8 repeats of 16 stitches).

-After finishing row 61, remove marker, cut yarn, and pull tail through remaining stitches.

-Sew in ends.

-Wet block.

-Wear!

LEGEND	
	ssk
	k2tog
	s1k2togpss0
	no stitch
	color B
	color A