

MICKEY MOUSE HAT

Charted and adapted for hat pattern by Ikumi Kayama



This pattern was inspired by one of the cast member costumes in Disneyland Park. The Norwegian style snowflake trimmed by tri-circle Mickey head motif was so inspiring that I wanted to knit one for myself, and share it with others. The areas around Mickey heads can be added later using the duplicate stitch technique or worked using fair-isle technique or Armenian technique. The basic hat shape was inspired by “Generic Norwegian Hat” by Adrian Bizilla. Please enjoy this pattern for personal use only.

Finished size: Adult, 20-21” circumference

Yarn: Sport weight. Shown here: KnitPicks Telemark (100% wool; 103yds/50g). Also suggested: Dale Garn Heilo/Falk.

MC: Black, 2 balls, CC1: Cream, 2 balls, CC2: Red, 1 ball.

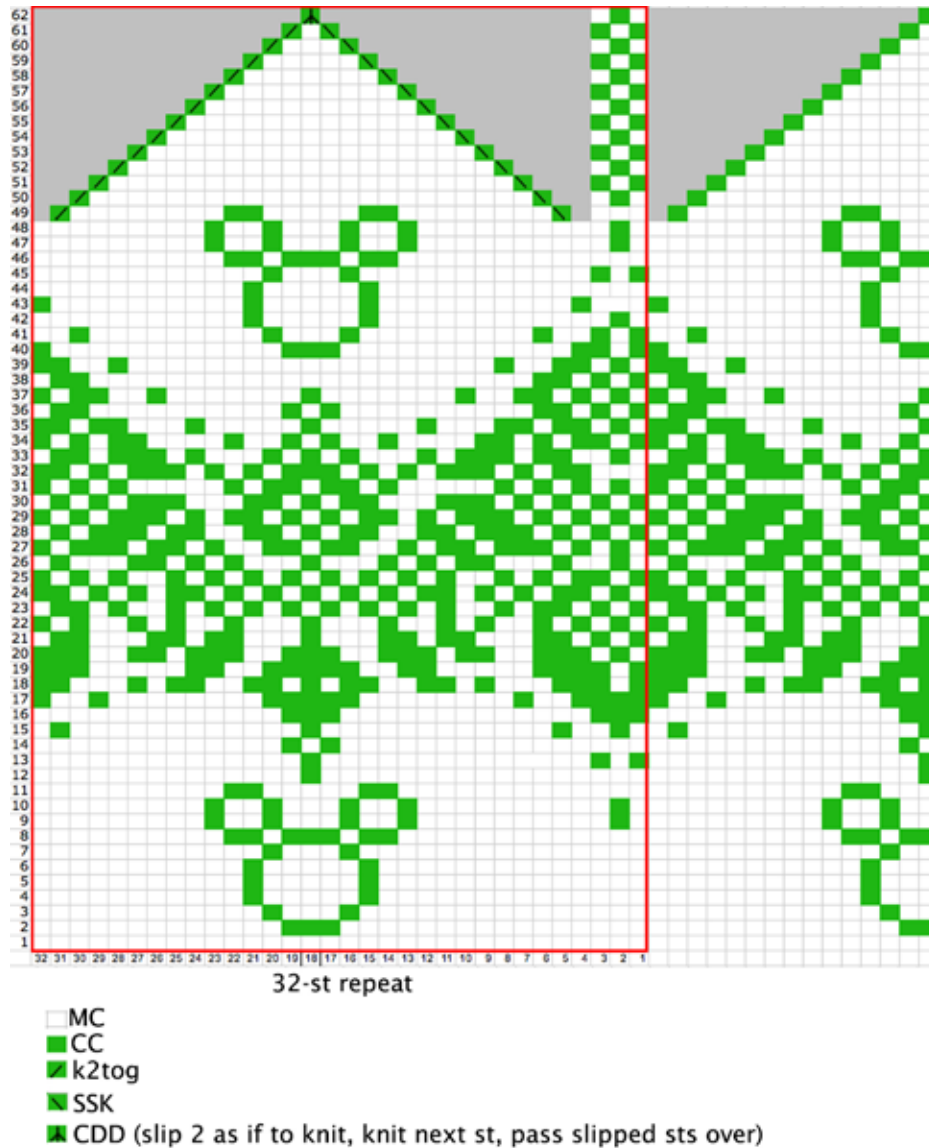
Needles: US4 or US5: 16” circular and DPN, US2 or US3: 16” circular. Adjust needle size if necessary to obtain the correct gauge.

Notions: Markers (m), crochet hook, smooth yarn for provisional cast-on, tapestry needle.

Gauge: 6.5 sts and 7 rows per 1 inch (2.5cm); 26sts and 28 rows per 4”x4”

Pattern:

With crochet hook and waste yarn, CO 128 sts. Using larger needles and MC, (k 32, place marker) 4 times. k 1 row in CC2. Begin chart. Use CC2 until row 11, then switch to CC1. Optional: Alternate CC1 and CC2 for Mickey Head motifs.



After row 62, k2tog around, alternating between MC and CC2 to continue the checkerboard pattern. Cut yarn. Thread through the remaining 10 sts and weave in the ends.

Pick up the provisional cast on with smaller needles. (k10 k2tog) 10 times, k8. 118 sts. Knit 2.25 inches in stockinette stitch. Do not bind off. Cut yarn with about 2 yards past work. Sew on the loose sts to the back of the hat (around row 16) using the long tail. Weave in ends.

Block by soaking in warm water for ~15 min. Dry flat. Enjoy!