

# Yellow Pink and Sparkly

## Marcus

By Janet McMahon

A fitted men's sweater with Fair Isle pattern.



It is knitted in the flat with double knitting weight yarn.

To fit sizes small/medium, (medium/ large)

### Knitted sizes

Chest 102 (112) cm / 40(44) inches

Length to shoulder 66(68)cm / 26(27)inches

Sleeve seam 51(53) cm / 20(21) inches

(Please note that I have only knitted up the small/medium size. The medium/large size pattern hasn't been tested by me.)

### Materials

I used Sirdar Balmoral wool, silk, alpaca mix double knitting yarn (125m/135yds per ball).

9 (9) x 50g balls in main shade in black (ms).

1 x 50g ball in grey (cs1)

1 x 50g ball in navy (cs2)

1 x 50g ball in dark red (cs3)

1 x 50g ball in cream (cs4)

3.75mm (US 5) straight needles

4mm (US 6) straight needles

3.25mm (US 3) straight needles

### **Tension**

22 sts and 31 rows to 10cm (4 inches) measured over plain stocking stitch using 3.75 mm needles.

### **Abbreviations**

k = knit

p = purl

sts = stitches

tog = together

tbl = through back of loops

ms = main shade

cs = contrast shade

RS = right side

WS = wrong side

RH = right hand



## BACK

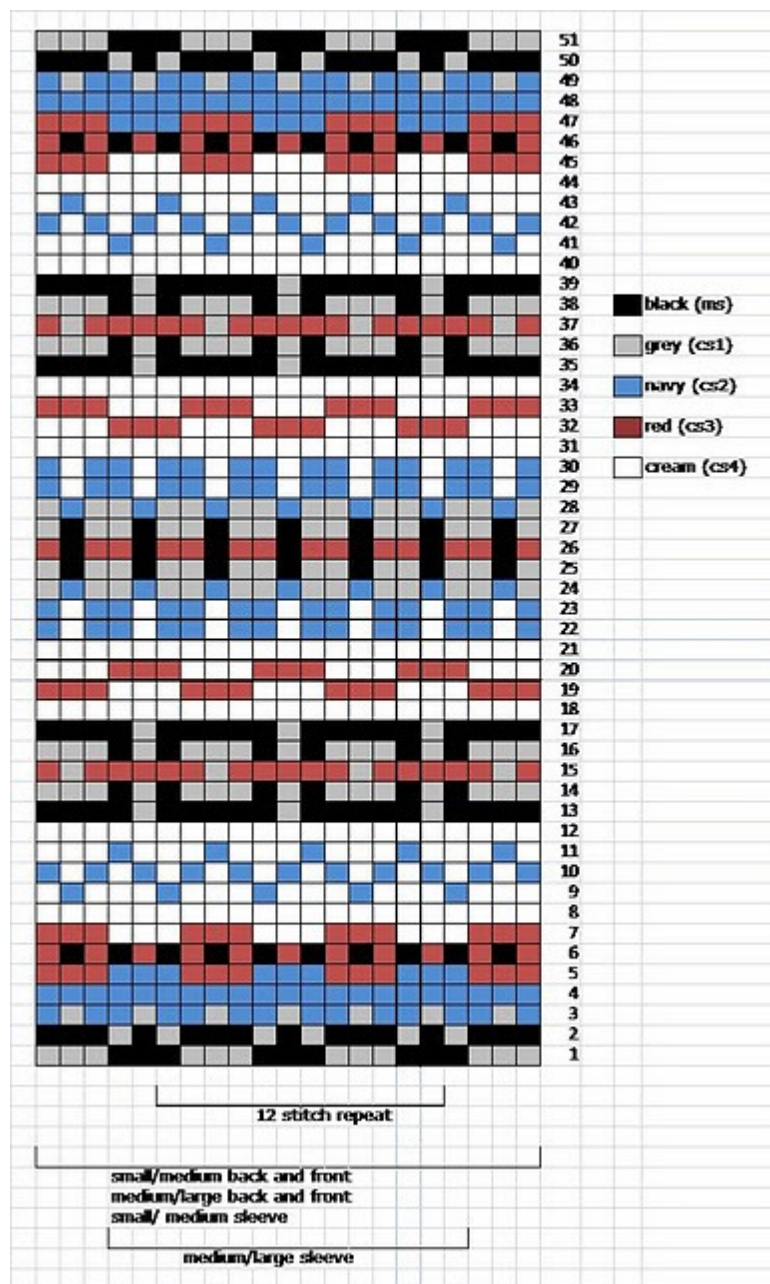
Using 3.25mm needles and ms, cast on 116 (128) sts.

Row 1 (RS): (k2, p2) to end.

This row forms the rib. Repeat this row until work measures 6 cm, ending with a WS row and increasing 1 st at the end of the last row. 117 (129) sts

Change to 3.75mm needles and work in stocking stitch until work measures 31 cm.

Change to 4mm needles and work from chart to row 38, joining in and breaking off colours as required.



### **Shape armholes**

Cast off 6 sts at the beginning of the next 2 rows (rows 39 and 40 of chart).

105 (117) sts

Decrease 1 st at each end of next 9 rows (up to and including row 49 of chart). 87 (99) sts

Complete last two rows of chart. \*

Change back to 3.75mm needles and working in ms and stocking stitch continue straight until armhole measures 23 (25) cm.

### **Shape shoulders**

Cast off 7 (8) sts at beg of next 2 rows.

Cast off 7(8) sts at beginning of next row and then knit until 12 sts are on RH needle, turn.

Working on 12 sts only, cast off 4 sts at beg of next row, purl to end.

Cast off remaining 8 sts.

With RS facing, place centre 35 (43) sts on a holder. Rejoin yarn to remaining 19 (20) sts, knit to end.

Cast off 7 (8) sts at beg of next row.

Cast off 4 sts at beginning of next row.

Cast off remaining 8 sts.

### **FRONT**

Work as given for back to \* (end of chart). Change back to 3.75mm needles and working in ms and stocking stitch continue straight until you have worked 20 rows less than on back to start of shoulder shaping.

With RS facing for next row, knit until there are 35 (37) sts on RH needle, turn, leaving remaining sts on a spare needle. Working on 35 (37) sts only, cast off 3 sts at beg of next row. 32 (34) sts

Decrease 1 st at neck edge on next 5 rows. 27 (29) sts

Dec 1 st at neck edge on 4 following alternate rows. 23 (25) sts

Dec 1 sts at neck edge on following 4th row. 22 (24) sts

Work a row, ending with a WS row.

### **Shape shoulders**

Cast off 7 (8) sts at beg of next row and following alternate row.

Work 1 row.

Cast off remaining 8 sts.

With RS facing, place centre 17 (25) sts on a holder. Rejoin yarn to remaining 35 (37) sts and knit to end.

Complete to match first side, reversing shaping.



## **SLEEVES**

With 3.25 needles and ms, cast on 60 (64) sts.

Row 1 (RS): (k2, p2) to end.

This row forms the rib. Repeat this row until work measures 6 cm, ending with a WS row and increasing 1 st at the end of the last row. 61 (65) sts

Change to 3.75mm needles and commence stocking stitch, work 2 rows.

Increase 1 st at each end of next row and 10 following 6th rows, and then on 5 (6) following 5th rows. 93 (99) sts

Continue straight until work measures 35 (37) cm.

Change to 4mm needles and work from chart to row 38, joining in and breaking off colours as required.

NOTE - the pattern for the medium/large sleeve has to accommodate the extra stitches into the pattern and so has a different starting and finishing point within the chart.

### **Shape sleeve top**

Cast off 6 sts at beginning of next two rows. (rows 39 and 40 of chart)

Decrease 1 st at each end of next 5 rows. (up to and including chart row 45)

Dec 1 st at each end of next 3 (4) alternate rows. (up to and including chart



row 51). 65 (69) sts

Change back to 3.75mm needles and working in ms and stocking stitch, dec 1 st at each end of following 4th row.

Dec 1 st at each end of next 12 (13) alternate rows.

Dec 1 sts at each end of next 5 (6) rows.

Cast off remaining 29 sts.



### NECKBAND

Join right shoulder seam.

With 3.25mm needles and RS facing, pick up and knit 22 sts down right front neck, knit across 17 (25) sts on holder, pick up and knit 22 sts up left front, pick up 4 sts from back left neck edge, knit across 35 (43) sts on holder, pick up and knit 4 sts from back right neck edge. 104 (120) sts

Work in K2 P2 rib for 10 rows. Cast off.

### MAKING UP

Fasten off and neaten all loose ends. Join left hand shoulder seam. Set in sleeves and sew up sleeve and side seams.