



Mystery Sock KAL August 2011 by Jen Hansen

<http://knittinglikecrazy.com>

Clue #1 – Friday, August 5th

Size

Women's Foot Size Medium (Large)

Finished Measurements

8" (9") circumference for cuff and foot.

Materials

- 1 skein The Sanguine Gryphon Skinny Bugga! Sock Yarn, 10% Nylon, 10% Cashmere, 80% Superwash Merino, 450 yards/113 grams
- 1 set of US Size 1 (2.25 mm) DPNs (or needles for your preferred method of knitting socks) or size needed to obtain gauge
- Tapestry Needle
- Stitch Markers (optional)

Gauge

32sts/4 inches in stockinette

Pattern Notes

Instructions are written for a cuff-down sock with a heel flap. Pattern is written for the medium size with the large sizing in parentheses.

Pattern Abbreviations

DPN(s)	double pointed needle(s)
CO	cast on
st(s)	stitch(es)
RS	right side
WS	wrong side
k	knit
p	purl
yo	yarn over
yo2	yarn over twice
sl1	slip one stitch purlwise
ssk	slip a stitch as if to knit to right needle, slip a second stitch as if to knit to right needle, slip both stitches back to left needle and knit together through the back loops
ktbl	knit one stitch through the back loop
k2tog	knit 2 stitches together
psso	pass the slipped stitch over
cdd	central double decrease: slip first and second stitches together as if to knit. Knit 1 stitch. Pass two slipped stitches over the knit stitch.
p2tog	purl 2 stitches together

Pattern:

Cuff:

CO 64(72)sts. Join round, being careful not to twist. Work ribbing as follows:

Round 1: [k0(2), p1, (k3, p1, k3, p1, k3, p1, k3) twice, p1, k0(2)] twice.

Repeat Round 1 eleven more times. Continue to leg.

Leg:

For both sizes, work leg chart 1 four times. Work leg chart 2 four times.

Leg Chart One:

Note: Stitches in blue box are worked only for large size sock. Stitches in red box are repeated twice across each half of sock.

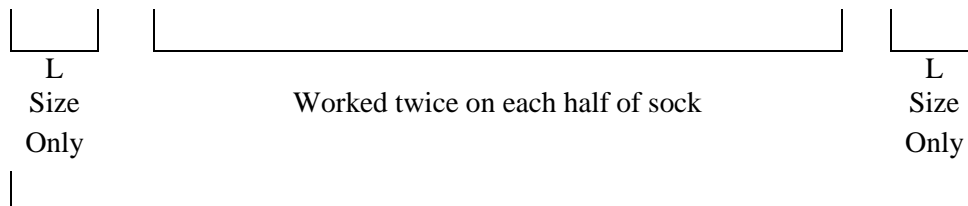
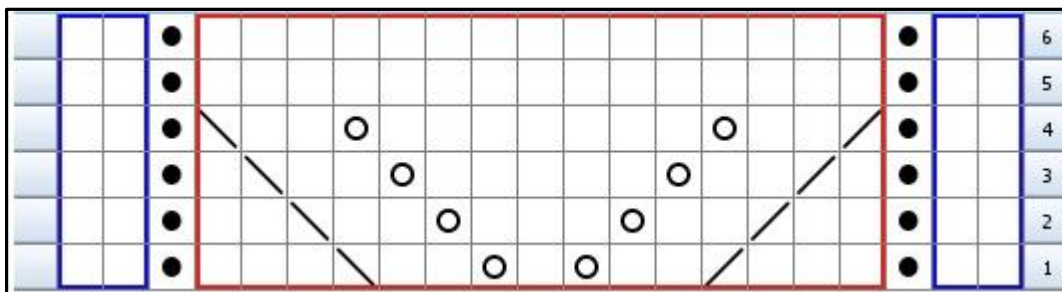


Chart worked over 32(36) sts. Repeat on each half of sock.

Legend:

☐ **knit**
knit stitch

☒ **purl**
purl stitch

☒ **k2tog**
Knit two stitches together as
one stitch

☒ **yo**
Yarn Over

☒ **ssk**
Slip one stitch as if to knit, Slip
another stitch as if to knit.
Insert left-hand needle into
front of these 2 stitches and
knit them together

Round 1: [k0(2), p1, (k3, k2tog, k2, yo, k1, yo, k2, ssk, k3) twice, p1, k0(2)] twice.

Round 2: [k0(2), p1, (k2, k2tog, k2, yo, k3, yo, k2, ssk, k2) twice, p1, k0(2)] twice.

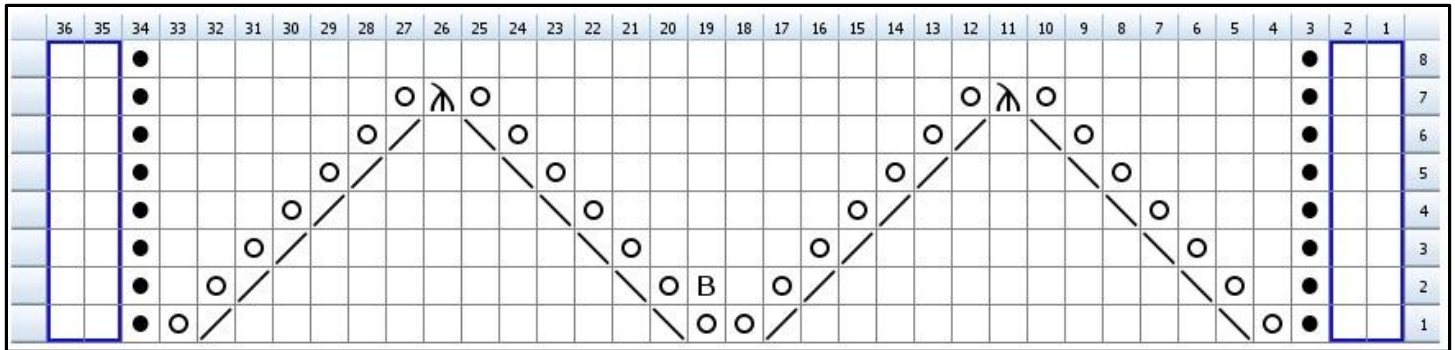
Round 3: [k0(2), p1, (k1, k2tog, k2, yo, k5, yo, k2, ssk, k1) twice, p1, k0(2)] twice.

Round 4: [k0(2), p1, (k2tog, k2, yo, k7, yo, k2, ssk) twice, p1, k0(2)] twice.

Rounds 5 & 6: [k0(2), p1, k30, p1, k0(2)] twice.

Leg Chart 2:

Note: Stitches in blue box are worked only for large size sock. Chart worked over 32 (36) sts. Repeat on each half of sock.



Legend:

☐ **knit**
knit stitch

☒ **purl**
purl stitch

☒ **yo**
Yarn Over

ssk
Slip one stitch as if to knit, Slip another stitch as if to knit. Insert left-hand needle into front of these 2 stitches and knit them together

☒ **k2tog**
Knit two stitches together as one stitch

☒ **knit tbl**
Knit stitch through back loop

☒ **sl1 k2tog pssso**
slip 1, k2tog, pass slip stitch over k2tog

Round 1: [k0(2), p1, yo, ssk, k11, k2tog, yo 2 times, ssk, k11, k2tog, yo, p1, k0(2)] twice.

Round 2: [k0(2), p1, k1, yo, ssk, k9, k2tog, yo, k1, k tbl, yo, ssk, k9, k2tog, yo, k1, p1, k0(2)] twice.

Round 3: [k0(2), p1, k2, yo, ssk, k7, k2tog, yo, k4, yo, ssk, k7, k2tog, yo, k2, p1, k0(2)] twice.

Round 4: [k0(2), p1, k3, yo, ssk, k5, k2tog, yo, k6, yo, ssk, k5, k2tog, yo, k3, p1, k0(2)] twice.

Round 5: [k0(2), p1, k4, yo, ssk, k3, k2tog, yo, k8, yo, ssk, k3, k2tog, yo, k4, p1, k0(2)] twice.

Round 6: [k0(2), p1, k5, yo, ssk, k1, k2tog, yo, k10, yo, ssk, k1, k2tog, yo, k5, p1, k0(2)] twice.

Round 7: [k0(2), p1, k6, yo, sl1 k2tog pssso, yo, k12, yo, sl1 k2tog pssso, yo, k6, p1, k0(2)] twice.

Round 8: [k0(2), p1, k30, p1, k0(2)] twice.

Clue #2 – August 12, 2011

Clue #2 Notes: The next step of the mystery sock is the heel flap. The heel flap that I designed is a little on the lacey side. If you wear out the heels of your socks easily, you may want to opt for a more standard heel flap. I have included directions for a standard slipped stitch heel flap as well. You choose!

Mystery Heel Flap:

Heel flap is worked back and forth over the next 32 (36) sts.

Note: Chart in red box is repeated twice across heel flap. Stitches in blue boxes are for large sock only.

	21	20	19	18	17	16	15	14	13	12	11	10	9	8	7	6	5	4	3	2	1	
6	V																					
5																						
4	V																					
3																						
2	V																					
1																						

Legend:

slip



RS: Slip stitch as if to purl, holding yarn in back
WS: Slip stitch as if to purl, holding yarn in front

knit



RS: knit stitch
WS: purl stitch

k2tog



RS: Knit two stitches together as one stitch

yo



RS: Yarn Over

Central Double Dec



RS: Slip first and second stitches together as if to knit. Knit 1 stitch. Pass two slipped stitches over the knit stitch.

ssk



RS: Slip one stitch as if to knit, Slip another stitch as if to knit. Insert left-hand needle into front of these 2 stitches and knit them together

Row 1 (RS): sl1, k0(2), [k2, k2tog, yo, k2, yo, cdd, yo, k2, yo, ssk, k2] twice, k1(3).

Rows 2 & 4 (WS): sl1, p31(35).

Row 3: sl1, k0(2), [k1, k2tog, yo, k2, yo, k1, cdd, k1, yo, k2, yo, ssk, k1] twice, k1(3).

Row 5: sl1, k0(2), [k2tog, yo, k2, yo, k2, cdd, k2, yo, k2, yo, ssk] twice, k1(3).

Rows 6: sl1, p31(35).

Repeat Rows 1-6 until heel flap measures 2.5" or desired length, ending with a Row 6. Proceed to heel turn.

Traditional Slip Stitch Heel Flap:

Row 1 (RS): [sl1, k1] to end.

Row 2 (WS): sl1, p31 (35).

Repeat Rows 1 and 2 until heel flap measures 2.5" or desired length, ending with Row 2. Continue to heel turn.

Heel Turn:

Row 1 (RS): sl1, k18 (20), ssk, k1, turn.

Row 2 (WS): sl1, p7 (7), p2tog , p1, turn.

Row 3(RS): sl1, knit to 1 stitch before the gap, ssk over the gap, k1, turn.

Row 4 (WS): sl1, purl to 1 stitch before the gap, p2tog over the gap, p1, turn.

Repeat Rows 3 & 4 until all sts have been worked. (20 (22) sts remain).

Clue #3 – August 19, 2011

From Clue #2, 20(22) sts remain on turned heel. Continue to Gusset.

Gusset:

Knit the stitches on the turned heel. On side of heel flap, pick up and knit 1 stitch in each slipped stitch along the heel flap. To avoid holes, pick up one stitch between the heel flap and the instep sts. Work Row 1 of Chart A across the 32(36) instep sts. On other side of heel flap, pick up and knit 1 stitch between the instep sts and the heel flap, then pick up and knit 1 stitch in each slipped stitch along this edge of the heel flap. Knit half of the Heel Turn stitches onto this needle. Place marker to mark beginning of round.

Round 1: k to 3 sts before instep sts, k2tog, k1, work Row 2 of Chart A over 32(36) instep sts, k1, ssk, k to end of round.

Round 2: k to instep sts, work Row 3 of Chart A over 32(36) instep sts, k to end of round.

Round 3: k to 3 sts before instep sts, k2tog, k1, work next row of Chart A over 32(36) instep sts, k1, ssk, k to end of round.

Round 4: k to instep sts, work next row of Chart A over 32(36) instep sts, k to end of round.

Repeat Rounds 3 & 4 once more, continuing with the established pattern using Chart A (i.e. all seven rows of Chart A will have been worked).

Now working Chart B, repeat rows 3 & 4 until 32(36) sts remain for the sole. Continue to foot.

Foot:

Think about the foot you want to put the sock on.

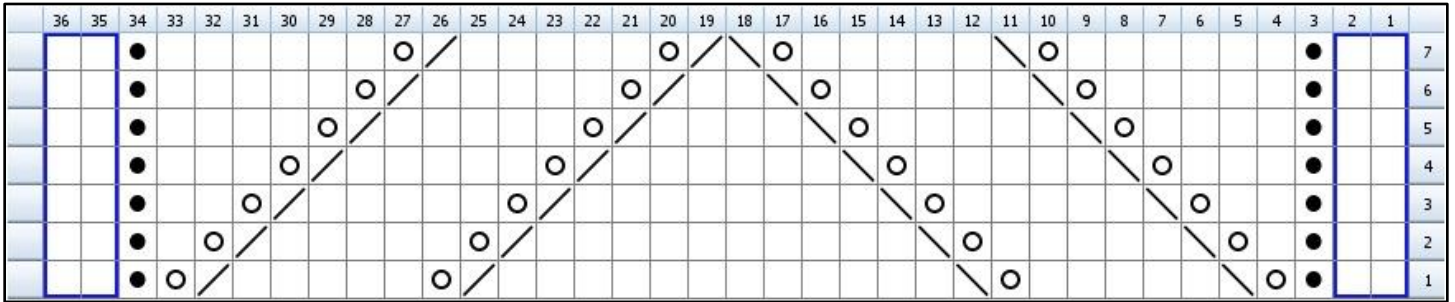
If knitting for a smaller foot (i.e. US Women's Shoe Size 5 or 6) continue working Chart B across 32(36) instep sts (sole sts will all be knit for remainder of sock). Work Chart B once more (Chart B is worked two times total).

If knitting for a foot US Women's Shoe Size 7 & up, continue working Chart B across 32(36) instep sts (sole sts will all be knit for remainder of sock). Work Chart B twice more (Chart B is worked three times total).

For all foot lengths, work Rows 1-7 of Chart C over 32(36) instep sts.

Chart A:

Note: Stitches in blue box are worked only for 72st sock. Chart worked over 32 (36) instep sts only.



Legend:



knit

knit stitch



purl

purl stitch



yo

Yarn Over

ssk

Slip one stitch as if to knit, Slip another stitch as if to knit. Insert left-hand needle into front of these 2 stitches and knit them together



k2tog

Knit two stitches together as one stitch

Row 1: k0(2), p1, yo, ssk, k5, yo, ssk, k12, k2tog, yo, k5, k2tog, yo, p1, k0(2).

Row 2: k0(2), p1, k1, yo, ssk, k5, yo, ssk, k10, k2tog, yo, k5, k2tog, yo, k1, p1, k0(2).

Row 3: k0(2), p1, k2, yo, ssk, k5, yo, ssk, k8, k2tog, yo, k5, k2tog, yo, k2, p1, k0(2).

Row 4: k0(2), p1, k3, yo, ssk, k5, yo, ssk, k6, k2tog, yo, k5, k2tog, yo, k3, p1, k0(2).

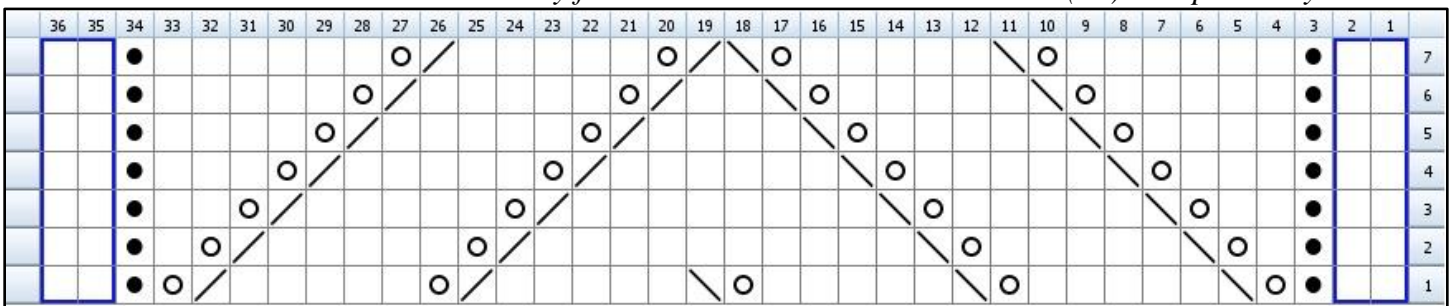
Row 5: k0(2), p1, k4, yo, ssk, k5, yo, ssk, k4, k2tog, yo, k5, k2tog, yo, k4, p1, k0(2).

Row 6: k0(2), p1, k5, yo, ssk, k5, yo, ssk, k2, k2tog, yo, k5, k2tog, yo, k5, p1, k0(2).

Row 7: k0(2), p1, k6, yo, ssk, k5, yo, ssk, k2tog, yo, k5, k2tog, yo, k6, p1, k0(2).

Chart B:

Note: Stitches in blue box are worked only for 72st sock. Chart worked over 32 (36) instep sts only.



Row 1: k0(2), p1, yo, ssk, k5, yo, ssk, k5, yo, ssk, k5, k2tog, yo, k5, k2tog, yo, p1, k0(2).

Row 2: k0(2), p1, k1, yo, ssk, k5, yo, ssk, k10, k2tog, yo, k5, k2tog, yo, k1, p1, k0(2).

Row 3: k0(2), p1, k2, yo, ssk, k5, yo, ssk, k8, k2tog, yo, k5, k2tog, yo, k2, p1, k0(2).

Row 4: k0(2), p1, k3, yo, ssk, k5, yo, ssk, k6, k2tog, yo, k5, k2tog, yo, k3, p1, k0(2).

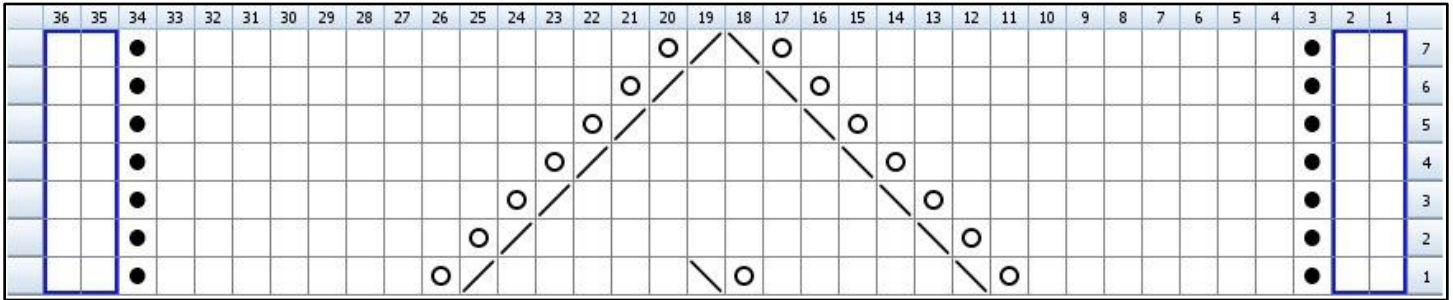
Row 5: k0(2), p1, k4, yo, ssk, k5, yo, ssk, k4, k2tog, yo, k5, k2tog, yo, k4, p1, k0(2).

Row 6: k0(2), p1, k5, yo, ssk, k5, yo, ssk, k2, k2tog, yo, k5, k2tog, yo, k5, p1, k0(2).

Row 7: k0(2), p1, k6, yo, ssk, k5, yo, ssk, k2tog, yo, k5, k2tog, yo, k6, p1, k0(2).

Chart C:

Note: Stitches in blue box are worked only for 72st sock. Chart worked over 32 (36) instep sts only.



Legend:



knit

knit stitch



purl

purl stitch



yo

Yarn Over

ssk

Slip one stitch as if to knit, Slip another stitch as if to knit. Insert left-hand needle into front of these 2 stitches and knit them together



k2tog

Knit two stitches together as one stitch



Row 1: k0(2), p1, k7, yo, ssk, k5, yo, ssk, k5, k2tog, yo, k7, p1, k0(2).

Row 2: k0(2), p1, k8, yo, ssk, k10, k2tog, yo, k8, p1, k0(2).

Row 3: k0(2), p1, k9, yo, ssk, k8, k2tog, yo, k9, p1, k0(2).

Row 4: k0(2), p1, k10, yo, ssk, k6, k2tog, yo, k10, p1, k0(2).

Row 5: k0(2), p1, k11, yo, ssk, k4, k2tog, yo, k11, p1, k0(2).

Row 6: k0(2), p1, k12, yo, ssk, k2, k2tog, yo, k12, p1, k0(2).

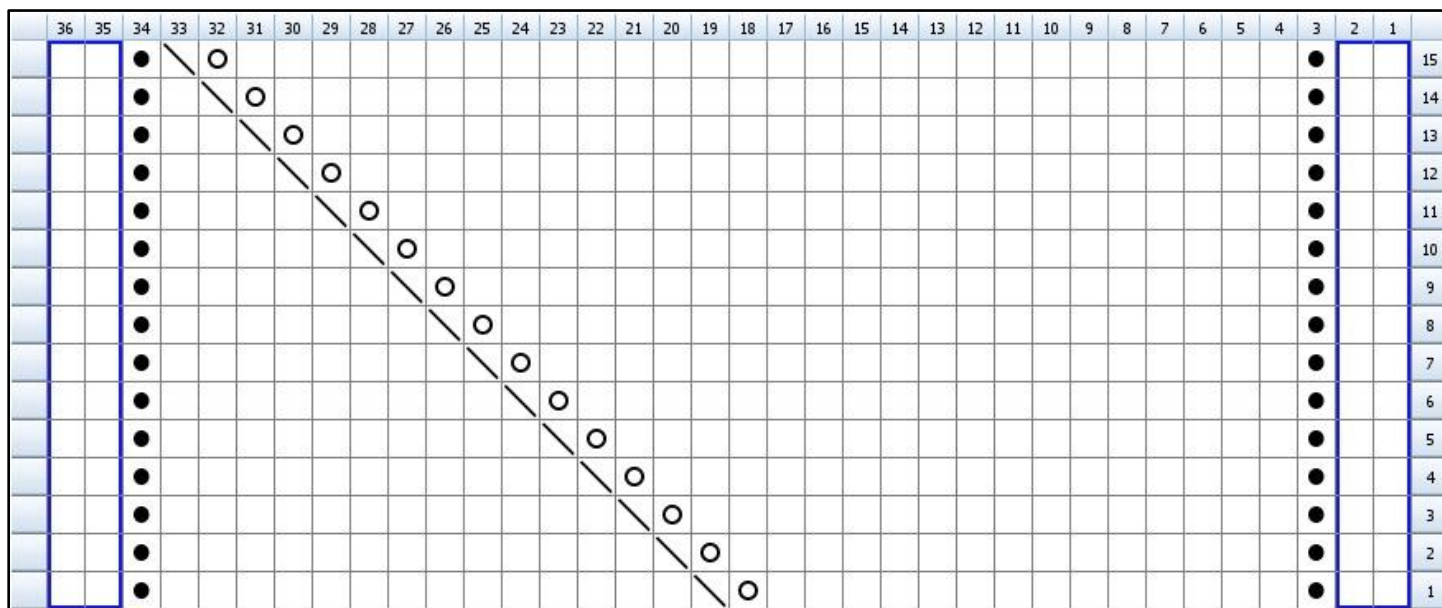
Row 7: k0(2), p1, k13, yo, ssk, k2tog, yo, k13, p1, k0(2).

Clue #4 – August 26, 2011

For Left Sock, work LEFT CHART over instep sts (continue in stockinette on sole sts). For Right Sock, work RIGHT SOCK over instep sts (continue in stockinette on sole sts). Continue to toe.

LEFT CHART:

Note: Stitches in blue box are worked only for 72st sock. Chart worked over 32 (36) instep sts only.



Legend:



knit
knit stitch



purl
purl stitch



yo
Yarn Over

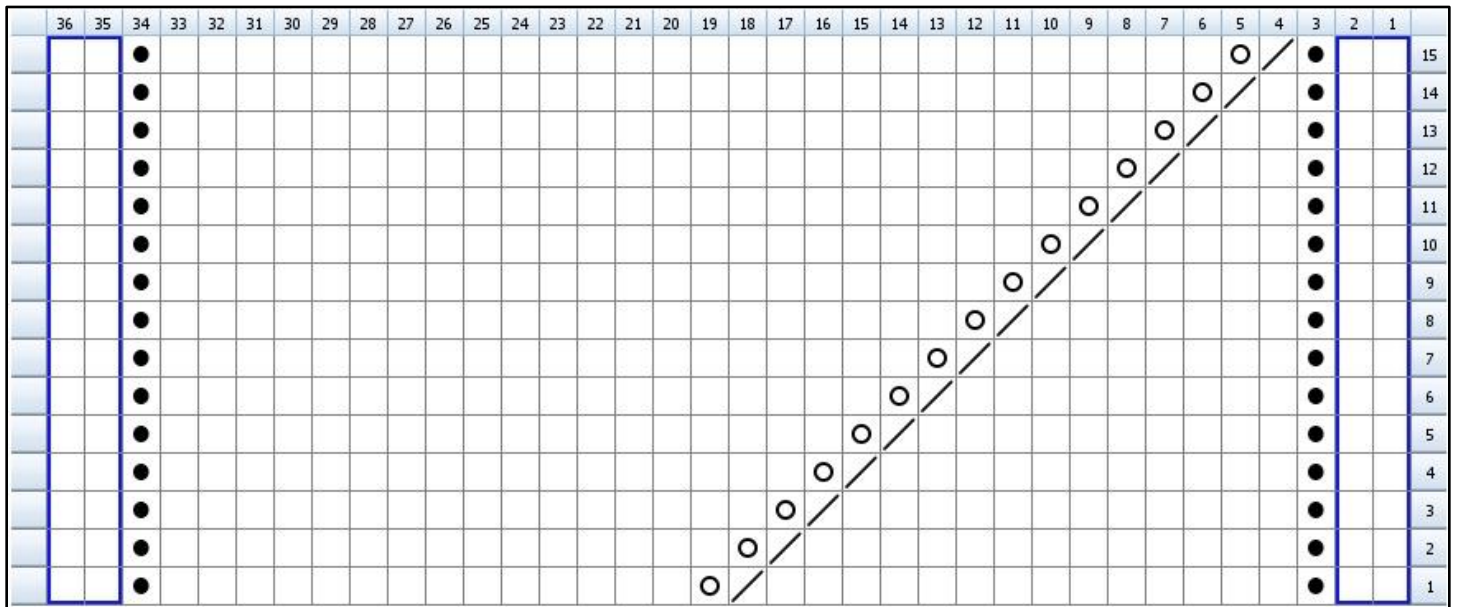


ssk
Slip one stitch as if to knit, Slip another stitch as if to knit. Insert left-hand needle into front of these 2 stitches and knit them together

Row 1: k0(2), p1, k14, yo, ssk, k14, p1, k0(2).
 Row 2: k0(2), p1, k15, yo, ssk, k13, p1, k0(2).
 Row 3: k0(2), p1, k16, yo, ssk, k12, p1, k0(2).
 Row 4: k0(2), p1, k17, yo, ssk, k11, p1, k0(2).
 Row 5: k0(2), p1, k18, yo, ssk, k10, p1, k0(2).
 Row 6: k0(2), p1, k19, yo, ssk, k9, p1, k0(2).
 Row 7: k0(2), p1, k20, yo, ssk, k8, p1, k0(2).
 Row 8: k0(2), p1, k21, yo, ssk, k7, p1, k0(2).
 Row 9: k0(2), p1, k22, yo, ssk, k6, p1, k0(2).
 Row 10: k0(2), p1, k23, yo, ssk, k5, p1, k0(2).
 Row 11: k0(2), p1, k24, yo, ssk, k4, p1, k0(2).
 Row 12: k0(2), p1, k25, yo, ssk, k3, p1, k0(2).
 Row 13: k0(2), p1, k26, yo, ssk, k2, p1, k0(2).
 Row 14: k0(2), p1, k27, yo, ssk, k1, p1, k0(2).
 Row 15: k0(2), p1, k28, yo, ssk, p1, k0(2).

RIGHT CHART:

Note: Stitches in blue box are worked only for 72st sock. Chart worked over 32 (36) instep sts only.



Legend:

- ☐ **knit**
knit stitch
- ☒ **purl**
purl stitch
- ☒ **k2tog**
Knit two stitches together as one stitch
- ☒ **yo**
Yarn Over

Row 1: k0(2), p1, k14, k2tog, yo, k14, p1, k0(2).
 Row 2: k0(2), p1, k13, k2tog, yo, k15, p1, k0(2).
 Row 3: k0(2), p1, k12, k2tog, yo, k16, p1, k0(2).
 Row 4: k0(2), p1, k11, k2tog, yo, k17, p1, k0(2).
 Row 5: k0(2), p1, k10, k2tog, yo, k18, p1, k0(2).
 Row 6: k0(2), p1, k9, k2tog, yo, k19, p1, k0(2).
 Row 7: k0(2), p1, k8, k2tog, yo, k20, p1, k0(2).
 Row 8: k0(2), p1, k7, k2tog, yo, k21, p1, k0(2).
 Row 9: k0(2), p1, k6, k2tog, yo, k22, p1, k0(2).
 Row 10: k0(2), p1, k5, k2tog, yo, k23, p1, k0(2).
 Row 11: k0(2), p1, k4, k2tog, yo, k24, p1, k0(2).
 Row 12: k0(2), p1, k3, k2tog, yo, k25, p1, k0(2).
 Row 13: k0(2), p1, k2, k2tog, yo, k26, p1, k0(2).
 Row 14: k0(2), p1, k1, k2tog, yo, k27, p1, k0(2).
 Row 15: k0(2), p1, k2tog, yo, k28, p1, k0(2).

Toe:

Continue working in stockinette on sole and instep sts until sock is ~1.5" shorter than the foot you want to put the sock on (*NOTE: You may not need to knit this stockinette portion if you complete the Left and Right Charts and the sock is ready for the toe decreases. In that case, just proceed to toe decreases below*).

Round 1: k to 3 sts before instep sts, k2tog, k2, ssk, k to 3 sts before sole sts, k2tog, k2, ssk, k to end.

Round 2: k.

For both sizes, repeat Rows 1 & 2 until 32 sts remain. Repeat Row 1 until 16 sts remain. Graft toe using Kitchener stitch.

Enjoy your Mystery Socks!