



## Harvest Basket Shawl

By Joyce Fassbender



Constructed in a modified basket weave, this shawlette is great to hold back the chill when picking apples in the fall or flowers in the spring. It is a triangular shawl with a garter stitch border that is knit from center back to the bottom edge. Yarn overs at each end and along the center stitch are used to form the triangle shape. Increases are worked on right side only.

Yarn Requirements: 550 yards (460m) of fingering weight. I used Malabrigo sock in Terracotta.

Needles: US size 5 (3.75mm) circular 24" long recommended

Additional Materials:

Tapestry needle to weave in ends

Stitch markers

Gauge: 24 sts x 28 rows = 4" in stockinette after blocking. However, as with most lace, gauge is fairly unimportant.

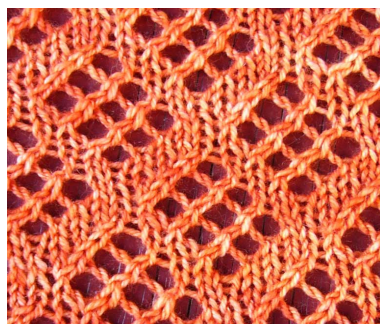
Finished Size: 62 W x 28 L (blocked)

### Notes:

- All rows are worked with two edge stitches in garter stitch. These stitches are not included on the charts.
- The center stitch is shown for each chart. It is labeled on Chart A, but not the remaining charts.
- In order to increase the size of the shawl, work additional repeats of charts B or D. Each added repeat for these charts will result in an increase of 16 stitches per side.
- For charts, work each RS (odd) row as follows: k2, work chart, k2. Odd rows are worked from right to left.
- Even rows of Charts A, B, and C are included on the chart. Even rows of charts D and E are not included on the charts and should be worked as follows: k2, purl to last 2 stitches, k2.
- For the k2tog bind off: k2, slip stitches onto left needle, k2tog through the back loop, \*k1, slip stitches onto left needle, k2tog through the back loop\*, repeat \* until all stitches are bound off.
- Boxed areas of charts indicate 8 stitch pattern repeat across rows.
- Use stitch markers between pattern repeats if necessary.



**top body detail**



**middle body detail**



**edge detail**

### Pattern:

Cast on 7 stitches using long tail cast on. Knit two rows.

Work Chart A once. (23 sts.)

Work Chart B five (5) times. (183 sts.)

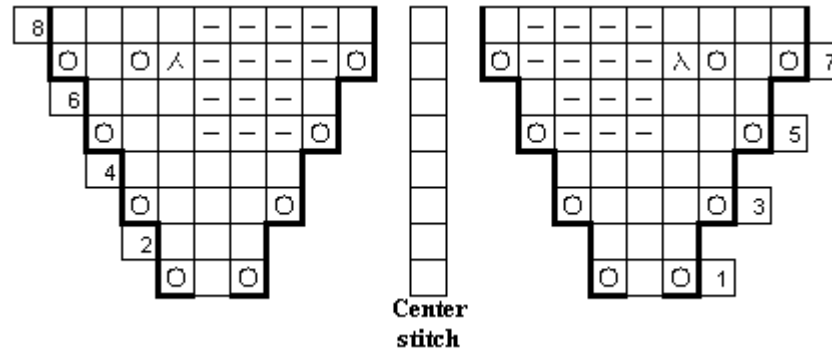
Work Chart C once. (199 sts.)

Work Chart D three (3) times. (295 sts.)

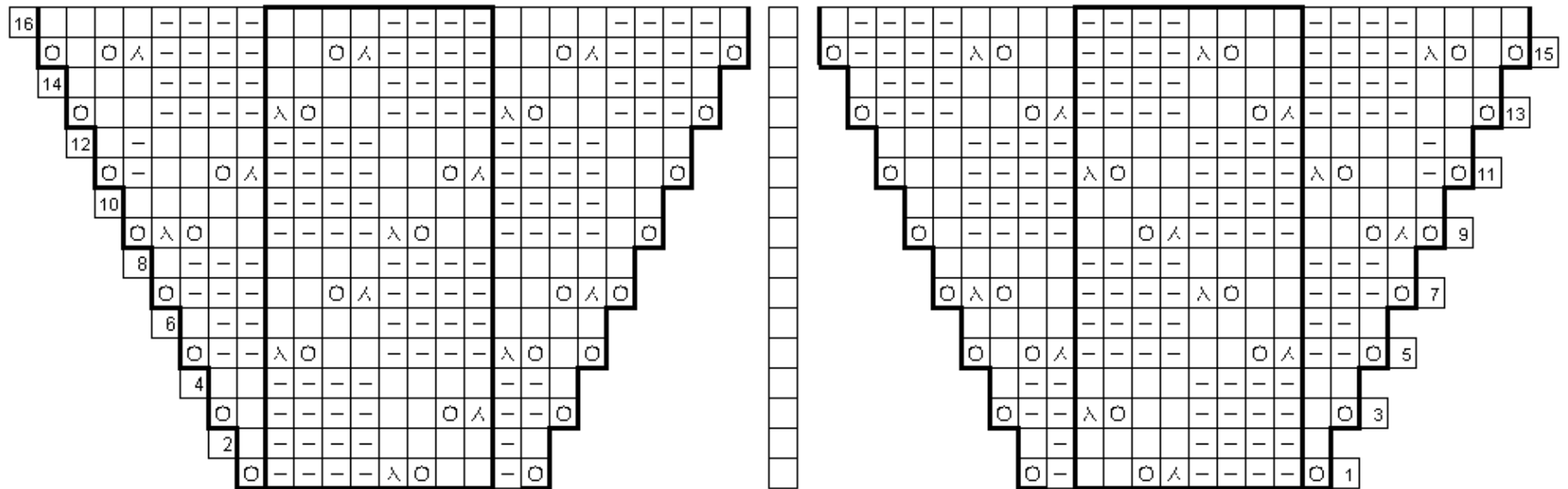
Work Chart E once. (323 sts.)

### Finishing:

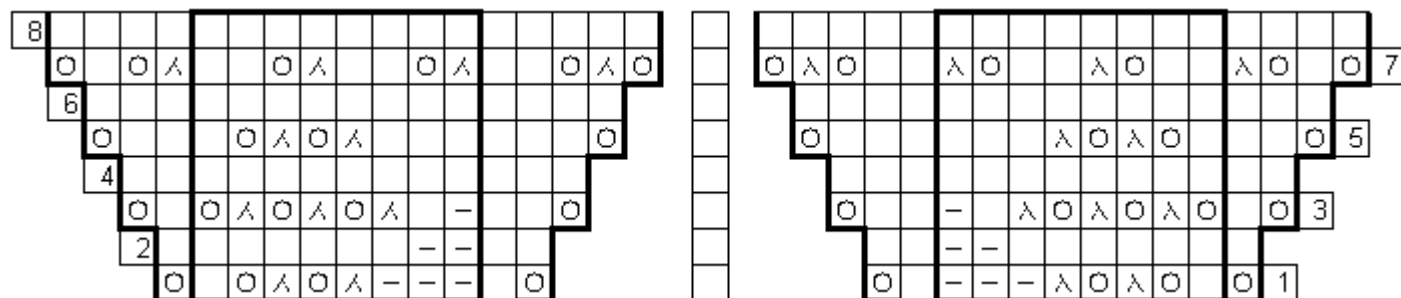
Bind off very loosely using k2tog bind off. Weave in ends and block.



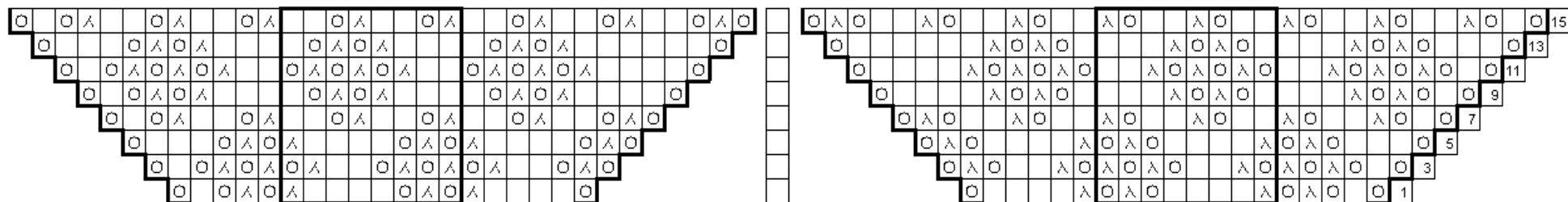
**Chart A-** Work rows 1-8 one time. 23 sts. at end of section.



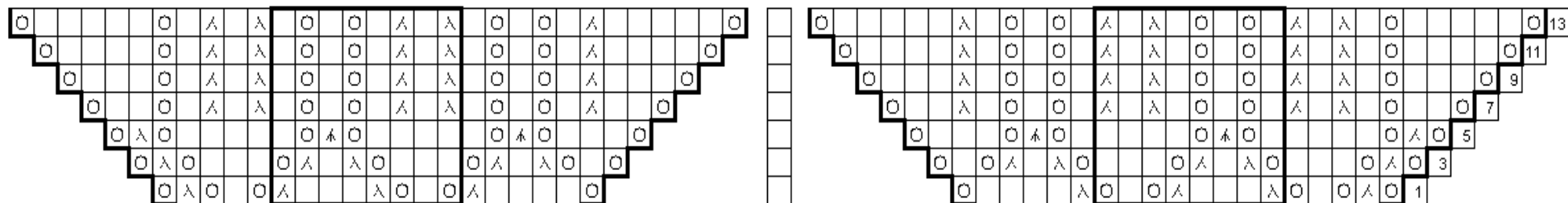
**Chart B:** Work rows 1-16 five (5) times. 183 sts. at end of section.



**Chart C:** Work rows 1-8 once. 199 sts. at end of section.



**Chart D:** Work rows 1-16 three (3) times. 295 sts. at end of section.



**Chart E:** Work rows 1-14 once. 323 sts. at end of section.


## **Legend:**


 knit RS, purl WS

 purl RS, knit WS

 yarn over

 k2tog

 ssk

 sl1, k2tog, pssso

k= knit

p= purl

yo= yarn over

RS= right side

WS= wrong side

k2tog= knit 2 stitches together

pssso= pass slip stitch over knitted stitch on  
right needle

ssk= slip, slip, knit (stitches should be slipped  
knitwise)

sl= slip stitch knitwise from left needle to  
right needle

sts= stitches