

# sweet lil' bandana



Bernat® Handicrafter Cotton  
50 g (1.76 ounces)/74 meters (80 yards) per ball

## Finished Size

39.4 cm (15½") along the front, and 27.9 cm (11") along the sides.

## Materials

1 ball of Bernat® Handicrafter Cotton or comparable yarn

Colour shown – Hot Green

Scraps of Patons® Grace or comparable yarn

Colour shown – Aquifer

6.00 mm (J) crochet hook or size needed to obtain gauge

4.00 mm (G) crochet hook

3.25 mm (D) crochet hook

Yarn needle

## Gauge

6 sc and 6 rows = 5 cm (2") unblocked square with a **6.00** mm (J) crochet hook.

## Stitch Legend

**ch** - chain

**sl st** - slip stitch

**st** - stitch

**yo** - yarn over

**sc** - single crochet

**dc** - double crochet

Colour **A** – Handicrafter Cotton Hot Green

Colour **B** – Patons® Grace Aquifer

# Instructions for the Sweet lil' Bandana



EASY

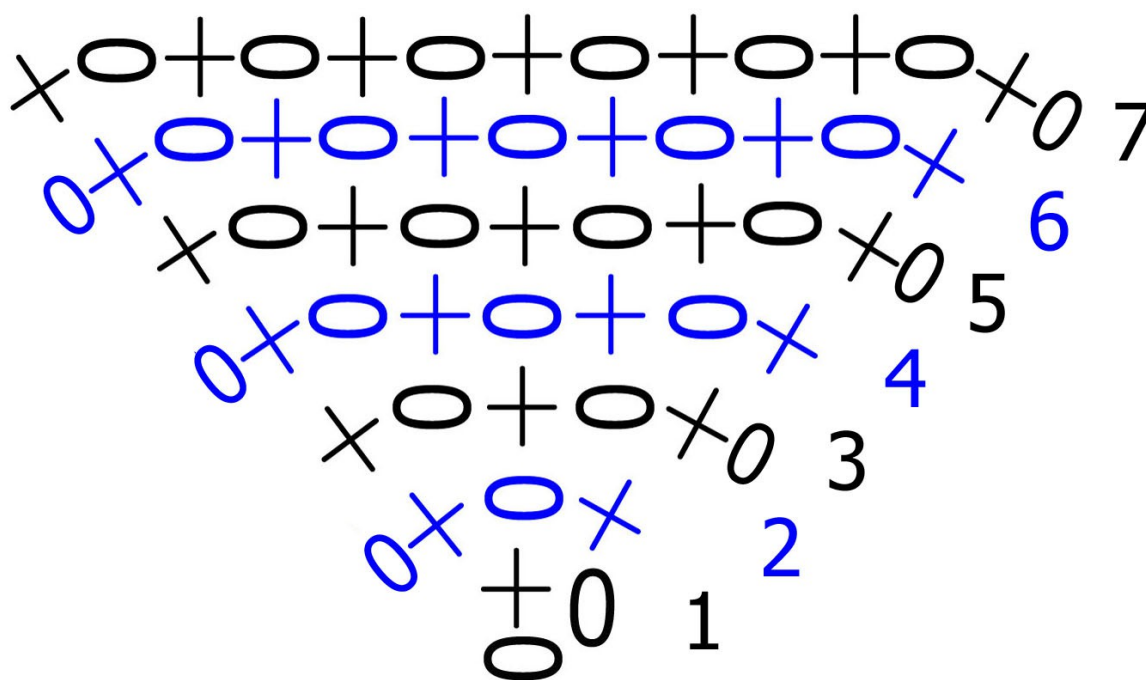
With **6.00** mm (J) crochet hook and colour **A** ch 2

**Row 1:** Work 1 sc in the second ch from hook, ch 1, turn – 1 sc.

**Row 2:** Work [1 sc, ch 1, 1 sc] all in the first sc, ch 1, turn – 3 sts.

**Row 3:** Work [1 sc, ch 1] in the first sc, \* work [1 sc, ch 1] in the next ch 1 space, repeat from \* across, work 1 sc in the last sc, ch 1, turn – 5 sts.

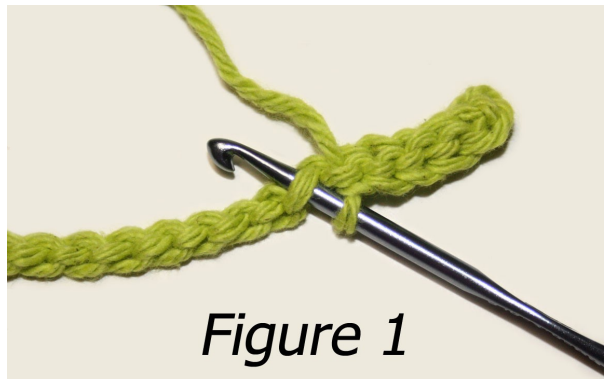
**Rows 4 – 31:** Repeat row 3 increasing 2 sts every row. At the end of row 31 you will have 61 sts. **Do not** fasten off.



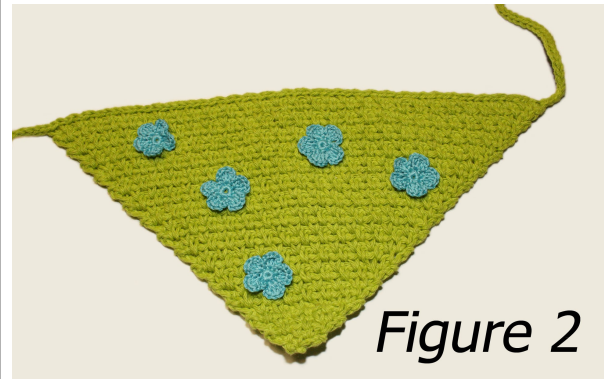
## Legend

○ = chain

+ = single crochet



*Figure 1*



*Figure 2*

## Ties

With **4.00** mm (G) crochet hook ch 60. Fasten off.

With **4.00** mm (G) crochet hook and colour **A** join yarn with a sl st to the opposite front corner of the bandana and ch 61.

**Row 1:** Work 1 sl st into the second ch from the hook, and in each ch and sc across – 181 sts. Fasten off. Sew in all yarn ends. **Hint:** For a nice even cord try working the sl st into the back hump of the ch as shown in *Figure 1*.

## Flower (Make 5)

With **3.25** mm (D) crochet hook, colour **B** and working in double adjustable ring ch 1

**Round 1:** Work 10 sc in ring, join with a sl st to the first sc of the round – 10 sc.

**Round 2:** \* ch 2, work 3 dc in next sc, ch 2, sl st in next sc, repeat from \* around – 5 petals. Fasten off leaving a long yarn end for sewing. Gently pull the starting yarn end to tighten the center of the flower and weave in yarn end in.

Using *Figure 2* as a guide arrange the flowers on top of the bandana. Using the long end for sewing attach each flower to the bandana with tiny back stitches around the center circle. Fasten off and sew in yarn end.



**COPYRIGHT:** This pattern may be printed for the personal use of the purchaser only. You MAY NOT in any form reproduce or distribute this pattern in part or in whole through any venue, electronic, mechanical or otherwise without the written authorization of the publisher.

Pattern is written in American Standard crochet terms.

Skill and yarn weight symbols compliments of Craft Yarn Council's <http://www.YarnStandards.com/>

Copyright 2011 Kim Miller of knot•sew•cute design shop

If you have any questions regarding this pattern please feel free to contact us at [knotsewcute@gmail.com](mailto:knotsewcute@gmail.com)