

SONG OF FALL SLOUCH HAT
(Sizes 2 yrs, 3-5 yrs, 6 – 12 yrs, Adult (S, M, L))



Designed by Lara Simonson
Knot Enuf Knitting

Hat directions are for size 2 yrs. Changes for size 3-5 yrs, 6 – 12 yrs and Adult (S, M, L) are in parenthesis. 2 yrs (3 - 5 yrs, 6 – 12 yrs, Adult (S), Adult (M), Adult (L))

Yarn: This hat was made with Cloudborn Superwash Merino Worsted Twist Yarn in Scarlet. (4 ply)

Amount for hat: 120 (140, 160, 180, 200, 220) yards

Knitting needles: 5 mm [8 US] circular needles (16” - 20”)
1 – cable needle
4 x 5 mm [8 US] dpns

Extra Materials: Tapestry needle to weave in ends
Tape measure or ruler
1 stitch marker
1-2 buttons

GAUGE: 18 st = 4” (10.2 cm); 24 rows = 4”(10.2 cm) in stockinette stitch in rounds.

To have great results, ensure your gauge is correct. Use any size needles to obtain the given gauge!

Finished dimensions (bottom circumference x height):

2 yrs	–	16” x 8 ½”	- 40.6 cm x 21.6 cm
3 – 5 yrs	–	17” x 9”	- 43 cm x 22.9 cm
6 – 12 yrs	–	18” x 10”	- 45.7cm x 25.4 cm
Adult (S)	–	19” x 10¼ ”	- 48.3 cm x 26 cm
Adult (M)	–	20” x 10 ¾”	- 50.8 cm x 27.3 cm
Adult (L)	–	21” x 11”	- 53.3 cm x 27.9 cm

NOTE: For best results, measure size of head to determine which size would work best. Allow about 3” (7.5 cm) for stretch.

Terms:

k	-	knit
p	-	purl
k2tog	-	knit two together
sl(RS)	-	slip stitch knitwise
sl(WS)	-	slip stitch purlwise
cn	-	cable needle
RS	-	Right side
WS	-	Wrong side
kfb	–	knit in front and back of stitch

Cable 4 Back – C4B – (uses 4 stitches) Slip next 2 stitches onto cable needle, hold to back, k2 from left needle, k2 from cn

Cable 3 right – C3R – (uses 3 stitches) Slip next st onto cable needle, hold to back, k2 from left needle, p1 from cn.

Cable 3 Left - C3L – (uses 3 stitches) Slip next 2 stitches onto cable needle, hold to front, p1 from left needle, k2 from cable needle

Cable 3 Back – C3B – (uses 3 stitches) Slip next stitch onto cable needle, hold to back, k2 from left needle, k1 from cn

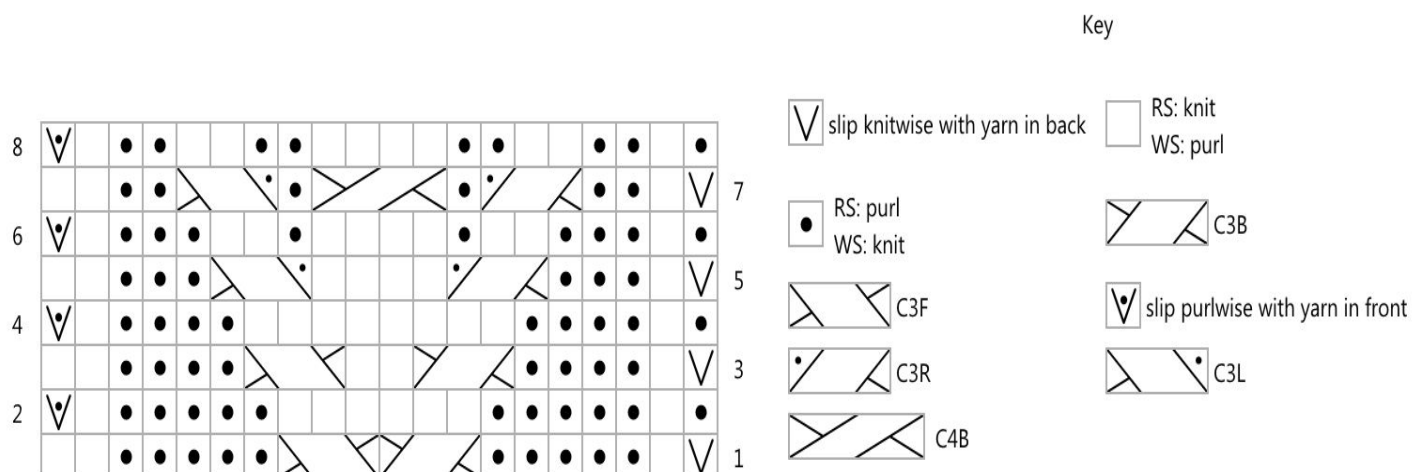
Cable 3 Front – C3F – (uses 3 stitches) Slip next 2 stitches onto cable needle, hold to front, k1 from left needle, k2 from cn

Cable Portion:

The cable portion is knit first in rows. The brim and top of the hat are knit by picking up stitches along the edges of the cable portion.

Cast on 20 (20, 20, 22, 22, 22) stitches. Leave approximately 12” (30.5 cm) tail to be used for sewing the edge onto the brim when brim is finished.

2yrs/3-5yrs/6-12yrs:



- Row 1 (RS): Sl, k1, p5, C3B, C3F, p5, k2
 Row 2 (WS): Sl, p1, k5, p6, k5, p1, k1
 Row 3: Sl, k1, p4, C3B, k2, C3F, p4, k2
 Row 4: Sl, p1, k4, p8, k4, p1, k1.
 Row 5: Sl, k1, p3, C3R, k4, C3L p3, k2
 Row 6: Sl, p1, k3, p2, k1, p4, k1, p2, k3, p1, k1
 Row 7: Sl, k1, p2, C3R, p1, C4B, p1, C3L, p2, k2
 Row 8: Sl, p1, k2, p2, k2, p4, k2, p2, k2, p1, k1

Repeat rows 1-8 until measures : (Finish with row 8)

2 yrs:	17" (43.2 cm)
3-5 yrs:	18" (45.7 cm)
6 – 12 yrs:	19" (48.3 cm)

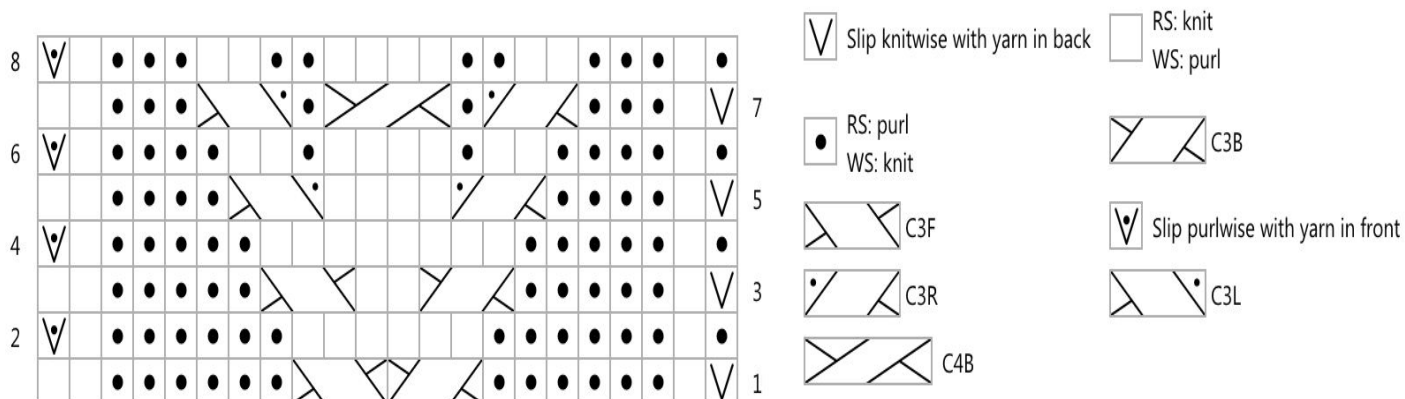
Bind off in this manner:

k1, *k2tog, pass first stitch over second stitch, k2tog, pass first stitch over second stitch.
 Repeat from * until 1 stitch remains. k1, pass first stitch over second stitch. Cut yarn
 tail and pull through remaining loop.

The bound of edge will be used for the flap of the cable. Fold the cable together. Let the bound off edge overlap by 1" (2.5 cm). Weave the back of the flap to the cast on edge. Weave in loose ends.

Adult Small/ Medium/ Large:

Key



- Row 1 (RS): Sl, k1, p6, C3B, C3F, p6, k2
- Row 2 (WS): Sl, p1, k6, p6, k6, p1, k1
- Row 3: Sl, k1, p5, C3B, k2, C3F, p5, k2
- Row 4: Sl, p1, k5, p8, k5, p1, k1.
- Row 5: Sl, k1, p4, C3R, k4, C3L p4, k2
- Row 6: Sl, p1, k4, p2, k1, p4, k1, p2, k4, p1, k1
- Row 7: Sl, k1, p3, C3R, p1, C4B, p1, C3L, p3, k2
- Row 8: Sl, p1, k3, p2, k2, p4, k2, p2, k3, p1, k1

Repeat rows 1-8 until measures : (Finish with row 8)

- Small: 20½” (52.1 cm)
- Medium: 21½” (54.6 cm)
- Large: 22½” (57.2 cm)

Bind off in this manner:

k1, *k2tog, pass first stitch over second stitch, k2tog, pass first stitch over second stitch. Repeat from * until 1 stitch remains. k1, pass first stitch over second stitch. Cut yarn tail and pull through remaining loop.

The bound off edge will be used for the flap of the cable. Fold the cable together. Let the bound off edge overlap by 1½” (3.8 cm). Weave the back of the flap to the cast on edge. Weave in loose ends.

BRIM:

With right side facing, pick up 60 (64, 68, 70, 74, 78) stitches along the bottom edge. Place Marker. Bottom edge will depend on which side you want the flap to be.

Rnd 1: k around.

Rnd 2: *k1, p1, repeat from * around.

Rnd 3: k around.

Rnd 4: *k1, p1, repeat from * around.

Rnd 5: k around.

Rnd 6: p around.

Rnd 7: k around.

Rnd 8: *k1, p1, repeat from * around.

Rnd 9: k around.

Rnd 10: *k1, p1, repeat from * around.

Bind off knitwise **loosely**.

HAT: With right side facing, pick up 60 (64, 68, 70, 74, 78) stitches along the top edge. Place marker.

Increase (2 yrs, 3-5 yrs, 6 – 12 yrs, Adult Large): *k1, kfb, repeat from * around.

90 (96, 102, x, x, 117)

Adult Small: k2, *k1, kfb, repeat from * around. (104 stitches)

Adult Medium: kfb, kfb, *k1, kfb, repeat from * around. (112 stitches)

Work in stockinette stitch (knitting each round) until measures (from start of brim) :

6 ³/₄" (7 ¹/₄" , 8 ¹/₄" , 8 ¹/₂" , 8 ³/₄" , 9")

17.1 cm (18.4 cm, 21 cm, 21.6 cm, 22.2 cm, 22.9 cm)

Decrease:**2 yrs:**

Set up: *k43, k2tog, repeat from * around. (88 stitches)

Rnd 1: *k9, k2tog, repeat from * around. (80 stitches)

Rnd 2: k around.

Rnd 3: *k8, k2tog, repeat from * around. (72 stitches)

Rnd 4: k around.

Rnd 5: *k7, k2tog, repeat from * around. (64 stitches)

Rnd 6: k around.

Rnd 7: *k6, k2tog, repeat from * around. (56 stitches)

Rnd 8: k around.

Rnd 9: *k5, k2tog, repeat from * around. (48 stitches)

Rnd 10: k around.

Rnd 11: *k4, k2tog, repeat from * around. (40 stitches)

Rnd 12: k around.
Rnd 13: *k2tog, repeat from * around. (20 stitches)
Continue at Finishing

3 – 5 yrs / 6 – 12 yrs:

Set up (6 – 12 yrs): *k15, k2tog, repeat from * around. (96 stitches)
Rnd 1: *k10, k2tog, repeat from * around. (88 stitches)
Rnd 2: k around.
Rnd 3: *k9, k2tog, repeat from * around. (80 stitches)
Rnd 4: k around.
Rnd 5: *k8, k2tog, repeat from * around. (72 stitches)
Rnd 6: k around.
Rnd 7: *k7, k2tog, repeat from * around. (64 stitches)
Rnd 8: k around.
Rnd 9: *k6, k2tog, repeat from * around. (56 stitches)
Rnd 10: k around.
Rnd 11: *k5, k2tog, repeat from * around. (48 stitches)
Rnd 12: k around.
Rnd 13: *k2tog, repeat from * around. (24 stitches)
Continue at Finishing.

Adult Small:

Rnd 1: *k11, k2tog, repeat from * around. (96 stitches)
Rnd 2: k around.
Rnd 3: *k10, k2tog, repeat from * around. (88 stitches)
Rnd 4: k around.
Rnd 5: *k9, k2tog, repeat from * around. (80 stitches)
Rnd 6: k around.
Rnd 7: *k8, k2tog, repeat from * around. (72 stitches)
Rnd 8: k around.
Rnd 9: *k7, k2tog, repeat from * around. (64 stitches)
Rnd 10: k around.
Rnd 11: *k6, k2tog, repeat from * around. (56 stitches)
Rnd 12: k around.
Rnd 13: *k2tog, repeat from * around. (28 stitches)
Continue at Finishing.

Adult Medium:

Rnd 1: k around.
Rnd 2: *k12, k2tog, repeat from * around. (104 stitches)
Rnd 3: k around.
Rnd 4: *k11, k2tog, repeat from * around. (96 stitches)
Rnd 5: k around.
Rnd 6: *k10, k2tog, repeat from * around. (88 stitches)
Rnd 7: k around.
Rnd 8: *k9, k2tog, repeat from * around. (80 stitches)
Rnd 9: k around.
Rnd 10: *k8, k2tog, repeat from * around. (72 stitches)
Rnd 11: k around.
Rnd 12: *k7, k2tog, repeat from * around. (64 stitches)
Rnd 13: k around.
Rnd 14: *k2tog, repeat from * around. (32 stitches)
Continue at Finishing.

Adult Large:

Set up: *k21, k2tog, repeat 3 times, *k22, k2tog, repeat 2 times (112 stitches)
Rnd 1: k around.
Rnd 2: *k12, k2tog, repeat from * around. (104 stitches)
Rnd 3: k around.
Rnd 4: *k11, k2tog, repeat from * around. (96 stitches)
Rnd 5: k around.
Rnd 6: *k10, k2tog, repeat from * around. (88 stitches)
Rnd 7: k around.
Rnd 8: *k9, k2tog, repeat from * around. (80 stitches)
Rnd 9: k around.
Rnd 10: *k8, k2tog, repeat from * around. (72 stitches)
Rnd 11: k around.
Rnd 12: *k7, k2tog, repeat from * around. (64 stitches)
Rnd 13: k around.
Rnd 14: *k2tog, repeat from * around. (32 stitches)
Continue at Finishing.

Finishing:

You will have 20 (24, 24, 28, 32, 32) stitches left on your needles. NOTE: In order to make the back of the hat bunched, there are more than normal amount of stitches left.

Cut the yarn off with a 15" tail.

Thread end of tail on a needle and pull needle through all stitches. Pull this very tight to keep the hole at the top of the hat small. It also will bunch up the hat as desired. You may want to loop the thread through the stitches twice to strengthen it.

Pull tight and put needle through top of hat and tie.

Weave in all tail ends into hat.

Using yarn or needle and thread, sew 1 -2 buttons on the flap of the hat. Sew through the flap and through the brim to secure the flap to the hat.



Copyright Knot Enuf Knitting 2015. Purchaser may not redistribute or resell this pattern. Pictures in this pattern may not be reused without permission from Knot Enuf Knitting. Purchaser may sell their completed project on a small scale if they give credit to Knot Enuf Knitting for pattern design. Enjoy and be creative!