

Maria in the Valley

by Konrad Siebenhüter



YARN

Rowan Fine Lace (Baby Suri Alpaca: 80%, Merino Wool Fine: 20%)

3 x 50 g shown here in shade 928 Porcelaine

NEEDLES

3,5 mm (US 4) needles

4,0 mm (US 6) circulars

TENSION

One pattern repeat (17 sts and 40 rows) should measure 7 cm (2,75") wide and 10 cm (4") long on, knitted with 3,5 mm (US 4) needles, after blocking.

SPECIAL ABBREVIATIONS

n: Nupp (buttono or bobble) Knit inot stitch, leaving it on the left-hand needle, *yarn over, knit into original stitch again, repeat from * two mor times - seven stitches from one stitch. In next row (WS) purl together all nupp stitches.

CENTER LACE

With 4 mm (US 6) needles cast on 116 sts, using the knitted cast-on method.

Attention:

To produce an edge stitch, slip the first st of every row to the right-hand needle as to purl.

Change to 3,5 mm (US 4) needles and knit 6 rows, remembering to do an edge stitch at the beginning of every row.

Now follow the pattern. The pattern is knitted 8 times a row and the 40 rows are knitted 13 times.

Row 1(RS): Slip st as if to p, k3, *k2tog, k1, yo, k1, yo, k6, skp, k1; repeat from * until the last 8 sts, k8.

Row 2 (and all foll WS rows): Slip st as if to p, k3, p until the last 4 sts, k4.

Row 3: Slip st as if to p, k3, *kt2og, k2, yo, k1, yo, k5, skp, k1; repeat from * until the last 8 sts, k8.

Row 5: Slip st as if to p, k3, *k2tog, k1, n, k1, yo, k1, yo, k4, skp, k1; repeat from * until the last 8 sts, k8.

Row 7: Slip st as if to p, k3, *k2tog, k2, n, k1, yo, k1, yo, k3, skp, k1; repat from * until the last 8 sts, k8.

Row 9: Slip st as if to p, k3, *k2tog, k3, n, k1, yo, k1, yo, k2, skp, k1; repeat from * until the last 8 sts, k8.

Row 11: Slip st as if to p, k3, *k2tog, k4, n, k1, yo, k1, yo, k1, skp, k1; repeat from * until the last 8 sts, k8.

Row 13: Slip st as if to p, k3, *k7, n, k5; repeat from * until the last 8 sts, k8.

Row 15: Slip st as if to p, k9, n, k3; repeat from * until the last 8 sts, k8.

Row 17: Slip st as if to p, k to the end.

Row 19: as Row 17.

Row 21: Slip st as if to p, k7, *k2tog, k6, yo, k1, yo, k1, skp, k1; repeat from * until the last 4 sts, k4.

Row 23: Slip st as if to p, k7, *k2tog, k5, yo, k1, yo, k2, skp, k1; repeat from * until the last 4 sts, k4.

Row 25: Slip st as if to p, k7, *k2tog, k4, yo, k1, yo, k1, n, k1, skp, k1; repeat from * until the last 4 sts, k4.

Row 27: Slip st as if to p, k7, *k2tog, k3, yo, k1, yo, k1, n, k2, skp, k1; repeat from * until the last 4 sts, k4.

Row 29: Slip st as if to p, k7, *k2tog, k2, yo, k1, yo, k1, n, k3, skp, k1; repeat from * until the last 4 sts, k4.

Row 31: Slip st as if to p, k7, *k2tog, k1, yo, k1, yo, k1, n, k4, skp, k1; repeat from * until the last 4 sts, k4.

Row 33: Slip st as if to p, k7, *k4, n, k8; repeat until the last 4 sts, k4.

Row 35: Slip st as if to p, k7, *k2, n, k10; repeat until the last 4 sts, k4.

Row 37: Slip st as if to p, k until the end.

Row 39: Slip st as if to p, k until the end.

Row 40: Slip st as if to p, k3, p until the last 4 sts, k4.

This pattern produces the lace section with a 4 sts garter edge.

The garter edge is not shown in chart!

Repeat the 40 rows of this pattern 12 times more, ending with a RS facing for next row.

Knit for 5 Rows producing a garter edge, remembering to slip the first st as if to purl. Ending with WS facing for next row. Cast-off, using the russian cast-off method. This produces a stretchy bind-off on the wrong side of the center piece.

LACE EDGE (make 2)

The lace edge is knitted in two pieces and afterwards sewn to the center section.

With 4 mm (US 6) circular needles and **two strands of yarn hold together** cast on 501 sts, using the knitted cast-on method.

The lace edge is now worked in garter lace and one strand of yarn.

Row 1 (RS): k

Row 2 (and all foll WS): k

Row 3: skp, k3, yo, *k1, yo, k3, sk2p, k3, yo; repeat from * until the last 6 sts, k1, yo, k3, k2tog.

Row 5: skp, k2, yo, k1, *k2, yo, k2, sk2p, k2, yo, k1; repeat from * until the last 6 sts, k2, yo, k2, k2tog.

Row 7: skp, k1, yo, k2, *k3, yo, k1, sk2p, k1, yo, k2; repeat from * until the last 6 sts, k3, yo, k1, k2tog.

Row 9: skp, yo, k3, *k4, yo, sk2p, yo, k3; repeat from * until the last 6 sts, k4, yo, k2tog.

Row 11: k1, *k2tog, yo; until the last two sts, k2tog, yo.

Row 13: k

Row 14 (WS): Cast-off, using the russian cast-off method.

Joining the lace edge to the center section

The lace edge is sewn onto the center section **on the wrong side** of the shawl and the lace edge, so the right sides of each piece is facing each other.

When sewing, bring the threaded needle through only one loop of the center section, whereas the loops of the lace edge are taken up according to the

following instructions:

Thread a blunt point needle with the yarn attached to the all and sew the whole lace edge to the center section at one time. Carefully pulling on the sewing yarn every now and then. When stretched the seam should be as elastic as the knitted center section and the lace edge.

Starting on a corner, join the lace edge first to the long side of the center section! By following the instructions given below, bring the threaded needle through each loop of the edge of both pieces without skipping any loops. Take only one loop from the center piece and, according to the instructions given, one, two or three loops from the cast-off of the lace edge. Bring the needle through a single thread of the loop towards the seam.

Joining instructions

Join 3 lace edge sts to 1 center section edge st (3 times), join 2 lace edge sts to 1 center section edge st (3 times), *join 1 lace edge st to 1 center section edge st (2 times), join 2 lace edge st to 1 center section edge st; repeat until 7 center section edge sts left, join 2 lace edge sts to 1 center section edge st (3 times), join 3 lace edge sts to 1 center section edge st (3 times). End of long side of center section should be arrived.

Now join 3 lace edge sts to 1 cast off st (3 times), join 2 lace edge sts to 1 cast off st (3 times). Join 1 lace edge st to 1 cast off st until 6 cast off sts left. Join 2 lace edge st to 1 cast off st (3 times), join 3 lace edge sts to 1 cast off st (3 times). End of short section of center section and end of lace edge should be arrived.

Repeat with the second lace edge!

MAKING UP

After having finished joining the lace and before weaving in the sewing yarn, stretch the seam so that it will not break during blocking.

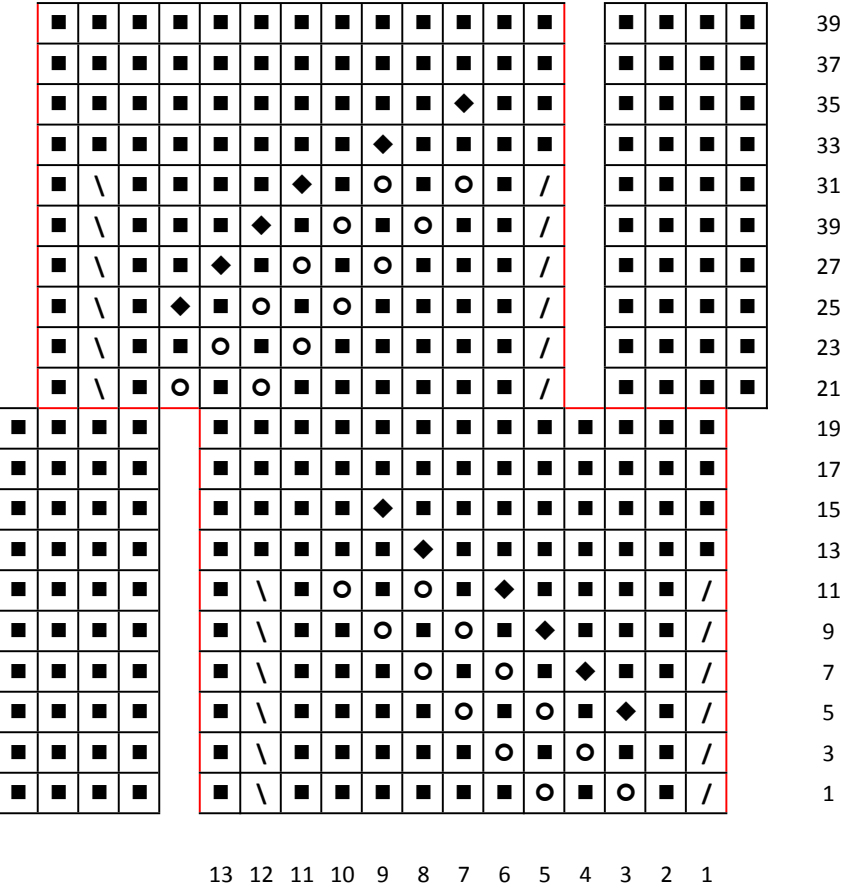
Secure both yarn tails with some stitches on the corners of the center section and do not weave them in or cut them yet.

Sew the ends of the lace edge together at the corners, using the yarn tails that were not woven in earlier. Now weave in the yarn tails left over after sewing, either in the cast on edge of the lace edge or into the seams.

The completed shawl is gently hand washed in luke warm water before blocking.

During blocking be sure that the pattern is straight. Allow the shawl to air-dry.

Pattern Center Section



- = Knit
- / = k2tog
- \ = skip
- = yarn over
- ◆ = nupp

Lace Edge Pattern

[illegible]

- = Knit
- / = k2tog
- \ = skp
- = yarn over
- Λ = sk2p



Facebook: www.facebook.com/konrad.siebenhuter

Twitter: @knittingkonrad

Blog: knittingkonrad.wordpress.com