



CONTEXT SCARF

by Kristin Briney

The Context Scarf is a study on texture, countering the delicate nature of lace with chunky garter stitch, which plays against a smooth feminine ruffle (optional). All of these elements add up to something that you'll want to wrap around your neck to keep you warm!

The pattern is written in two sizes, but can easily be adjusted by adding more chart repeats or working the pattern in a different weight of yarn. As written, the large (shown in grey) is just big enough to wrap around your neck twice and knot in front—a very stylish way to keep the chill out.



Sizes

Small [Large]

Finished Measurements

Height: 9 [11.5] inches
(plus 1.5 with optional ruffle)

Width: 32.5 [41] inches
(plus 3 with optional ruffle)

Gauge

22 sts x 20 rows = 4 inches in garter stitch

Materials

200-400 yards of fingering weight yarn.
(*Why not try some sock yarn from your favorite Etsy handdyer?*)

Size US #5/3.75 mm needles

Stitch markers

Difficulty

This pattern is for an intermediate knitter who is comfortable working with charts.

PATTERN

CO 3 st.

Knit 6 rows (3 ridges).

Pick up and knit 3 st along left edge.

Pick up and knit 3 st along cast-on edge.

9 stitches total.

Main Section

Row 1 (RS): K3, yo, sl1, K2tog, pssso, yo, K3. (9 st total)

Rows 2-12: K3, work pattern in chart A, K3.

Rows 13-36: K3, work pattern in chart B, K3.

Rows 37-60: K3, work pattern in chart C, K3.

Rows 61-84: K3, work pattern in chart B, K3.

Small Size: Proceed to border.

Large Size: Repeat rows 37-60 (chart C) then proceed to border.

Border

Rows 1-4: K3, yo, knit to 3 st before the end, yo, K3.

Cast off loosely on right side row.



Optional Ruffle Edging

Row 1 (RS): Pick up and knit 181 [229] stitches along the side edges. This corresponds to one stitch per row along the two edges and 5 stitches at the point of the 'V'.

Row 2: Purl to end.

Row 3: Kfb to end.

Row 4: Purl to end.

Row 5: Knit to end.

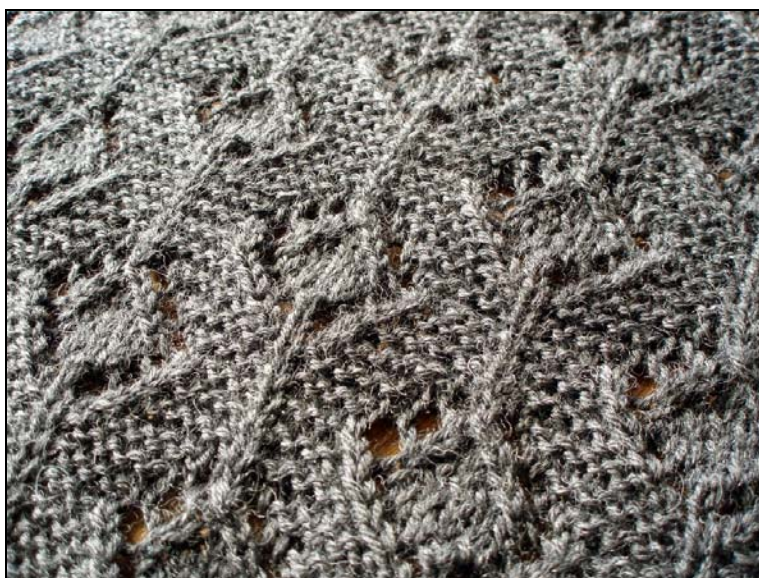
Repeat rows 4 and 5 until ruffle measures 1.5 inches/4 cm, ending with row 4.

Cast off loosely on right side row.

Finishing

Weave in ends.

Block scarf.



CHARTS

Note on charts:

The vertical lines in charts B and C represent placement of stitch markers.

The main pattern repeats in charts B and C are highlighted by the dark vertical lines.

Chart Legend

<input type="checkbox"/>	K on right side, P on wrong side
<input checked="" type="checkbox"/>	P on right side, K on wrong side
<input type="checkbox"/>	Yarn over
<input type="checkbox"/>	SSK
<input type="checkbox"/>	K2tog
<input type="checkbox"/>	Sl1, K2tog, pss0

Chart A

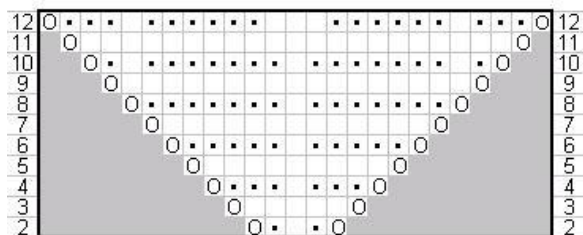


Chart B

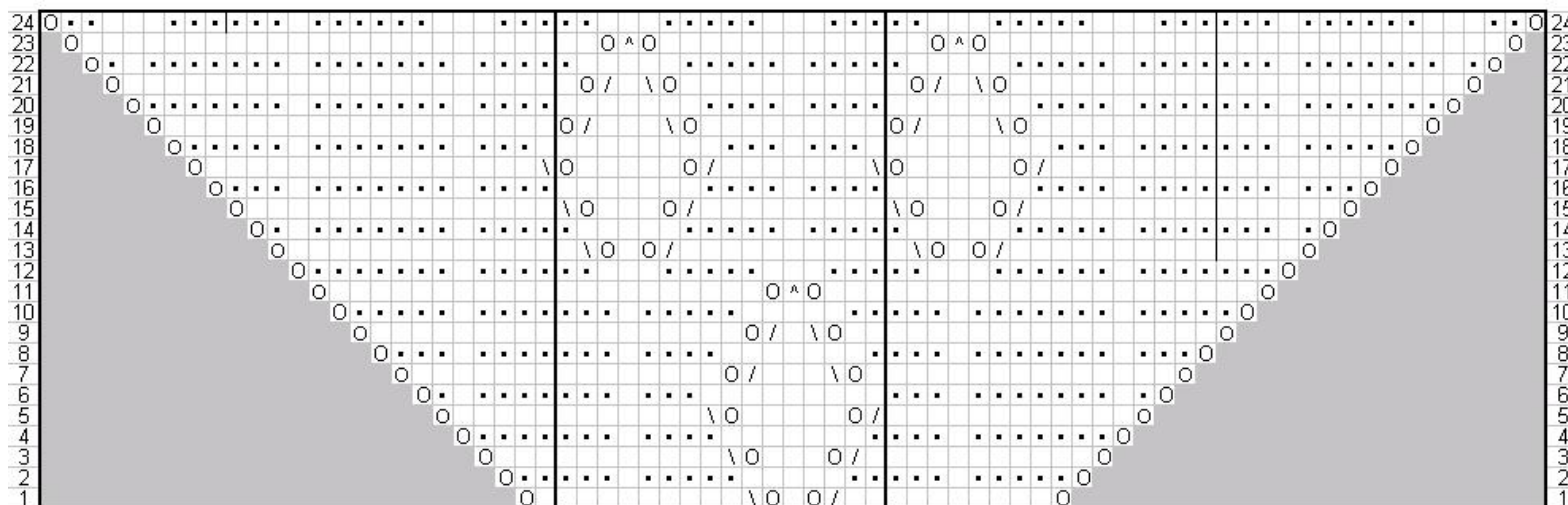


Chart C

