



MyBabyLove Beanie



This hat is knit in moss stitch so it's very elastic, shaping makes sure it fits over the ears and stays on snugly. The heart is sewn on with duplicate stitch at the end.

sizes: xs(1-2 kg), s(2-3kg)

Materials: One skein fingering weight yarn, Superwash Merino, or a cotton or cotton blend. Fingering or sport weight yarn in a complementary color, about 2 m. Double Pointed needles or a circular needle (for magic loop) 2.5 mm, 3mm



Moss stitch:

row 1, 3, 5 etc: *p1, k1*

row 2, 4, 6 etc: *k1, p1*

Shorthand:

Inc1: knit into the front and back loops of one stitch

p2tog: purl two stitches at once

k2tog: knit two stitches at once

p3tog: purl three stitches at once

for an elastic cast-on use the slip-knot cast-on, there's a video instruction on my [blog](#)

Cast on 60, 66 st with 2.5mm needles and divide them on dpns or a circular needle Place a marker and join in the round.

Knit 1 x 1 rib for 3 cm

Switch to 3 mm needles. Next row, knit all stitches and increase 7 st evenly, inc1 about every 9, 10 stitches (67, 73 st)

Knit moss for four rows. Place a marker after the 26th, 30th st

next row (row 5) knit moss to marker, then follow the diagram for the heart, then knit moss til end of row.

Repeat for row 6- row 13 until the diagram is done.

knit moss until the hat is 10, 12 cm from cast-on edge.



Start decreases on an uneven row of the moss pattern

Size xs:

p1, k1, p3tog,(p1, k1)2 times, k1 6 times, p1,k1, p3tog, k1, p1

k1, p1 to last stitch, k1

(p1,k1)2 times, p3tog, k1 6 times, p1, k1, p3tog

k1, p1 to last stitch, k1

*p3tog,k1,p1,k1*6 times, p1

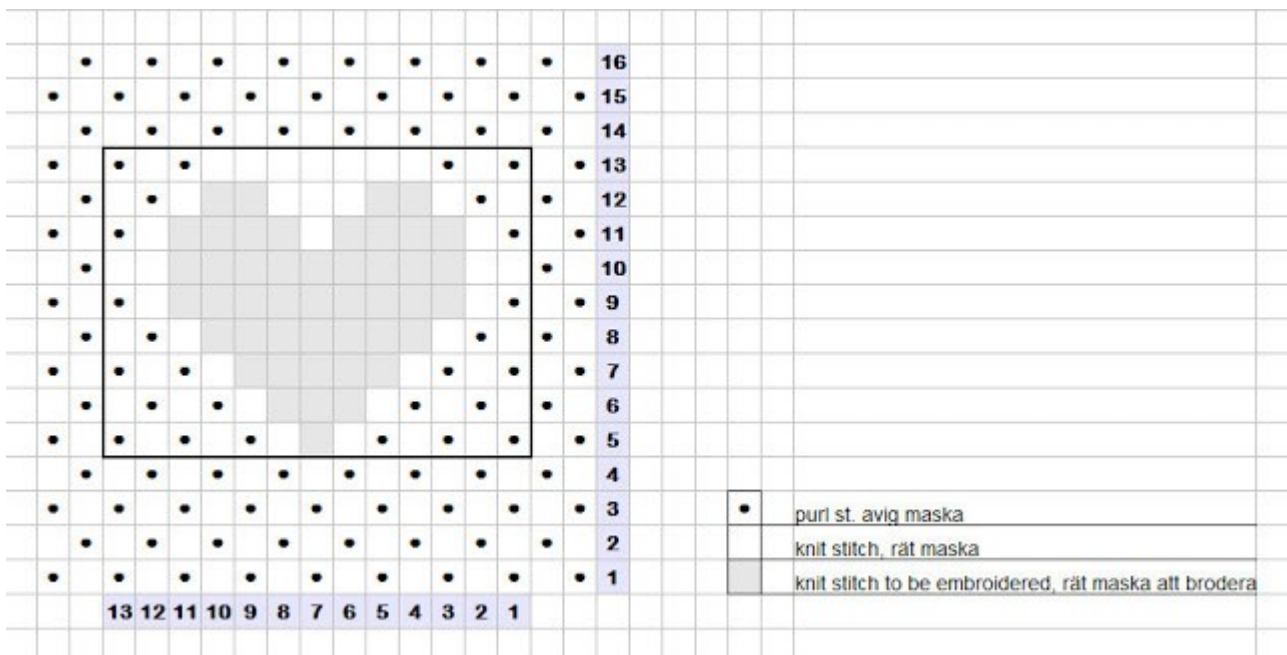
k1, p1 to last stitch, k1

p2tog, k2tog 6 times, p1

k1, p1 to last stitch, k1

pull thread through remaining stitches and fasten loose ends.

pull thread through remaining stitches and fasten loose ends.



Embroider the heart using duplicate stitch or cross stitch. Fasten all threds.
Done!