

# Shifty triangle mittens

Design

**MALIN LINDERBORG**

at

LIFE, THE UNIVERSE AND QUILTY STUFF  
[www.malinsuniverse.blogspot.com](http://www.malinsuniverse.blogspot.com)



Yarn: Drops Delight, colorway number 10. 2 balls of 50 gr. Yarn (=175 meters/ball). If you are using one larger ball of yarn you will be knitting from both ends of the yarn at once.

Needles: 5 Double pointed needles 2,5 mm. US 1 or 2

Knitting gauge: 26 stitches x 34 rows = 10 x 10 cm or 4 x 4 inches.

Large safety pin to hold thumb stitches.

Size: Womens medium. To adjust size add or remove one or more triangles in pattern, remember to change number of cast on stitches.

---

Use both balls of yarn (or both ends of one ball). You will use one lighter strand and one darker. Both strands change color so there is a chance that both strands at some point in the knitting will have the same (or similar) color. If this happens discard enough yarn to keep the strands in different colors.

Cast on 66 stitches in the darker hue. Connect your stitches making sure you are not swisting the stitches.

Purl the first round. Knit the next round still in the darker color.

Now knit one in the lighter strand, purl one in the darker strand. Repeat all around. Do this for 3 rounds.

Knit one round in the lighter color.

---

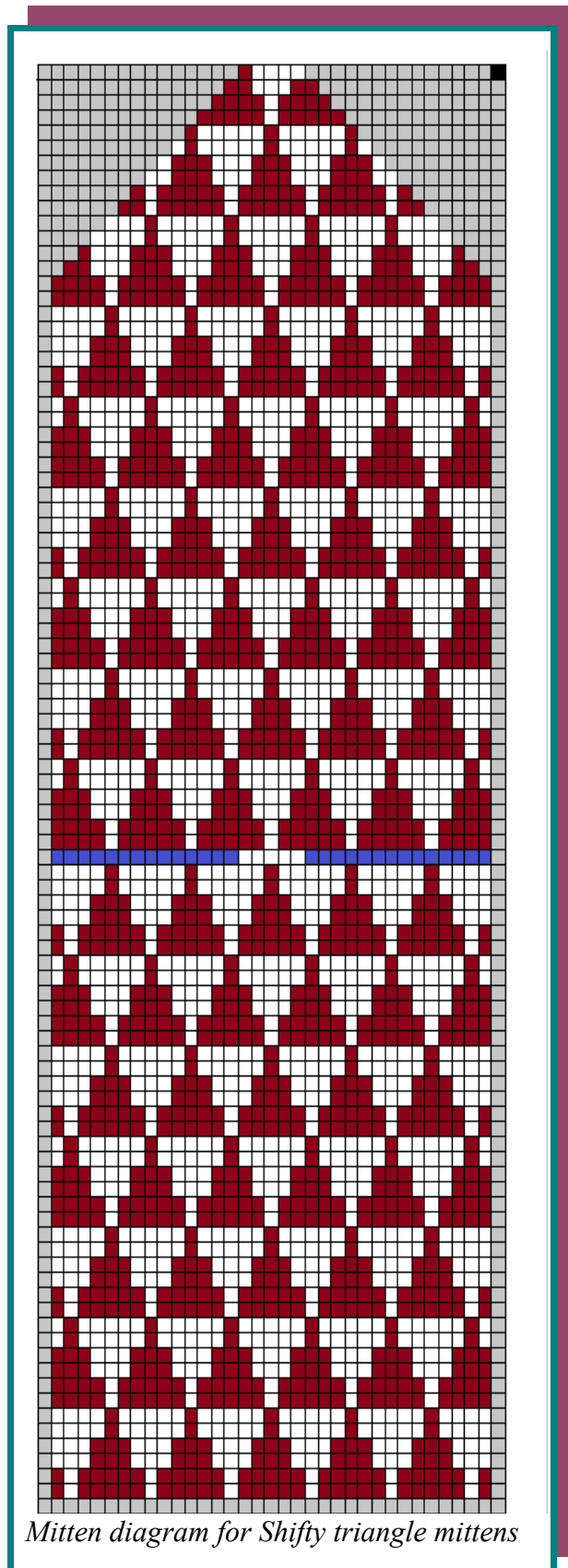


---

Now start knitting diagram nr 1:

The diagram shows the back of the mitten, repeat for the front but don't make thumbs on the front side. If you do, your mittens will look funny.

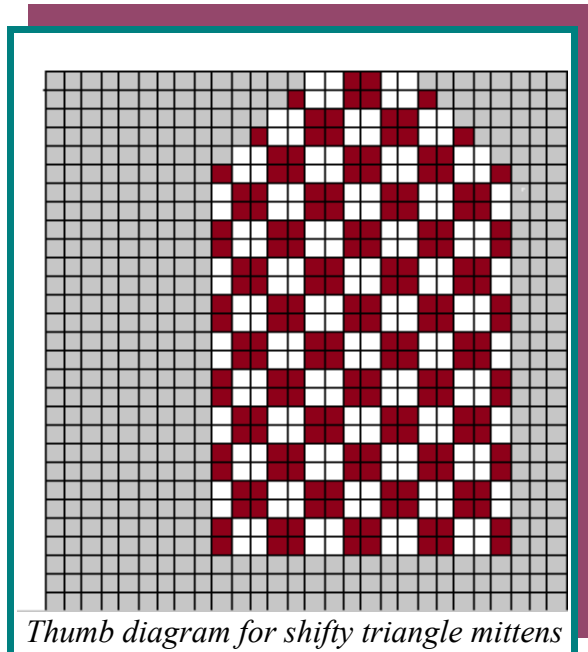
The blue line is the thumb stitches. When you reach them in your knitting, place the stitches on a large safety pin. On the next round cast on corresponding stitches again and continue knitting according to the diagram. Don't forget to make a right and a left mitten (place the thumb on different sides). I have made this mistake several times...



Decrease stitches according to the diagram. Pull both strands of yarn through the remaining stitches and weave in the ends.

Knit the thumb by placing the stitches from the thumb stitches on the safety pin on the dpn's, pick up 2 stitches from the side of the thumb. Pick up 14 stitches from the cast on

edge and another 2 stitches from the last side of the thumb. This makes a total of 32 stitches. Knit the thumb according to the thumb diagram. Same as for the mitten: repeat the diagram for the back side.



Decrease stitches according to the diagram. Pull both strands of yarn through remaining stitches and weave in ends.

Block.

**GOOD LUCK!**

Do you have questions or comments?

Contact me at:  
[malinsuniverse@gmail.com](mailto:malinsuniverse@gmail.com)