

Dalek Lace Motif
Marjolein Thunnissen 2012



I knitted a “Bigger on the Inside” for my big daughter and then the smaller one wanted one too. I felt that having two the same shawls would lead to problems and also wanting a bit of variations, I made a Daleks motif shawl instead. But the original idea is from “Bigger on the Inside”!

So these lace pattern motifs are meant to be used for a variant for the “Bigger on the Inside” Shawl by Kate Atherley and full credit for the design of the shawl goes to her and her lovely pattern. The original pattern is also needed for all other instructions. Here only the Dalek motifs can be found and the small adaptations required to make it work.

Additional abbreviations (not in the original pattern):

C2Rp:

RS row: skip the first st, and knit into front of the second st, leaving both sts on left needle. Purl the first st and slip both sts off the needle.

WS row: skip the first st, and knit into front of the second st, leaving both sts on left needle. Purl the first st and slip both sts off the needle.

C2Lp:

RS row: skip the first st, and purl into the back of second st, leaving both sts on left needle. Knit the first st and slip both sts off the needle.

WS row: skip the first st and purl into the back of second st, leaving both sts on left needle. Knit the first st and slip both sts off the needle.

CPD:

WS row: slip 1 st purl-wise, p2tog tbl, slip the slipped stitch over.

Daleks section:

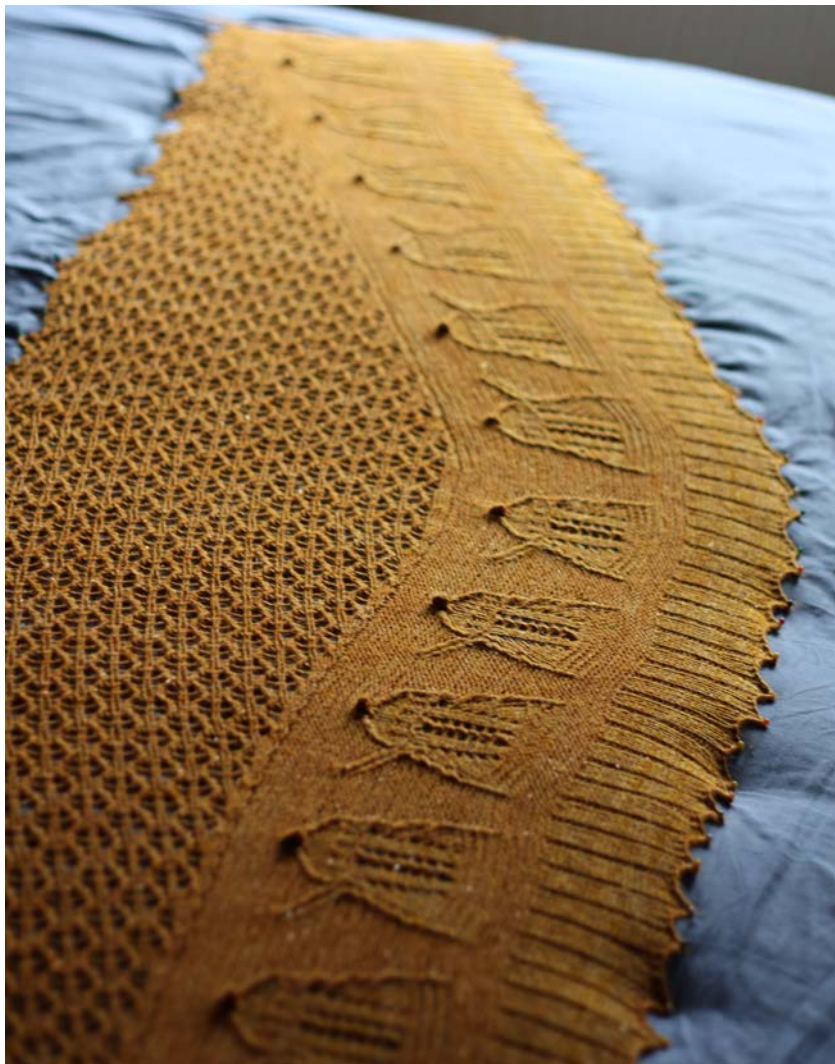
After Vortex lace section, pick up and knit 312 sts. This is approximately 3 sts for every 4 rows.

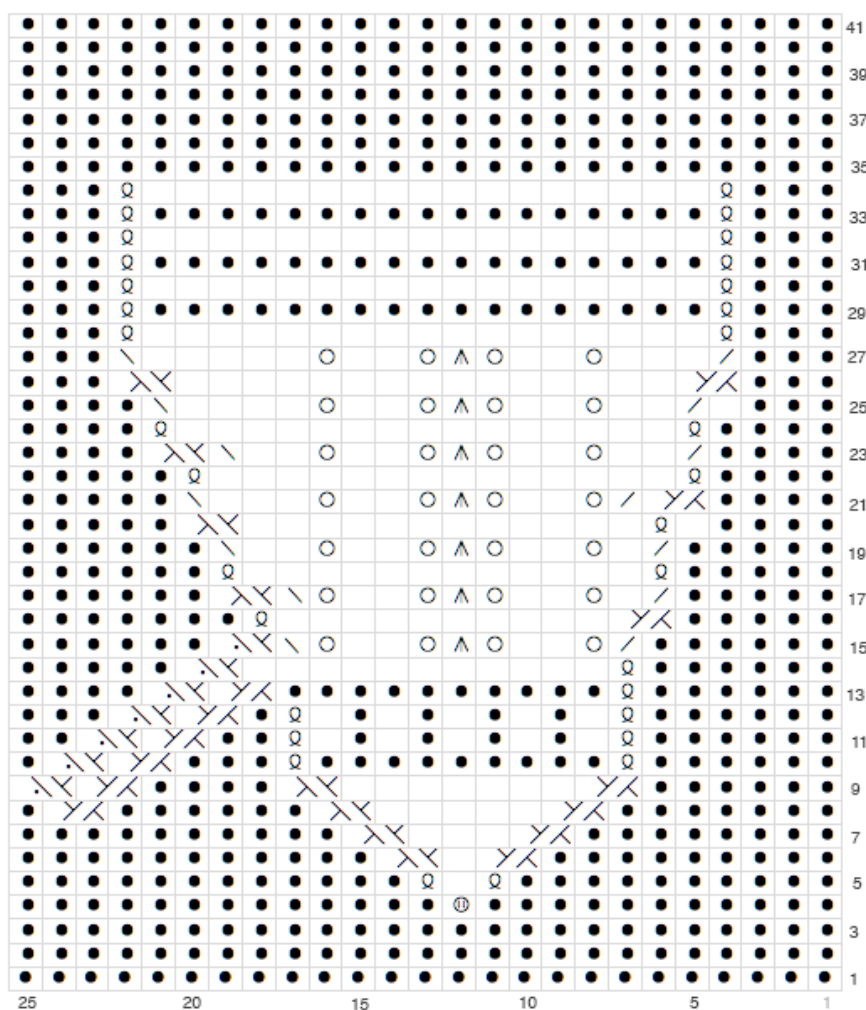
Then starting with a WS row, k3, continue in reverse stockinette (knit on WS side, purl on RS side) until 3 sts before end, k3. Repeat for in total 6 rows ending with a RS row.

Then starting with a WS row, k3, p3, 6 x scheme "Dalek Right", 6 x scheme "Dalek Left", p3, k3. RS row: k6, 6 x scheme "Dalek Left", 6 x scheme "Dalek right", k6. Continue as set by the pattern described by the lace schemes.

When schemes have been completed the next row should be knitted while decreasing 1 stitch at a random position

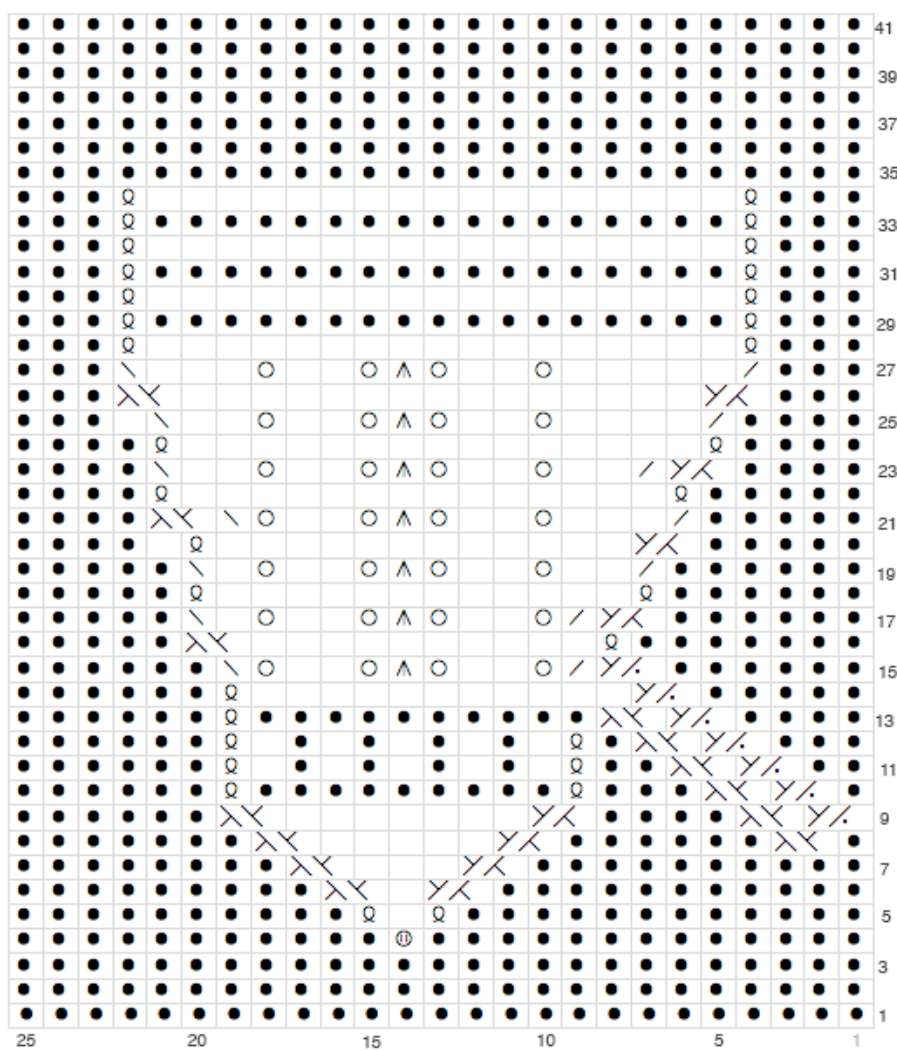
Continue by following the lower edging directions in the original pattern.





	RS: knit, WS: purl
●	RS: purl, WS: knit
Ⓢ	Make bobble
Q	RS: k tbl, WS p tbl
○	yarn-over
Λ	CPD
↘	RS: SSK, WS:p2tog tbl
↙	RS: K2tog, WS:p2tog
XX	C2L
YY	C2R
XY	C2Rp
YX	C2Lp

Left Dalek Motif



	RS: knit, WS: purl
●	RS: purl, WS: knit
Ⓢ	Make bobble
Q	RS: k tbl, WS p tbl
○	yarn-over
^	CPD
\	RS: SSK, WS:p2tog tbl
/	RS: K2tog, WS:p2tog
X	C2L
Y	C2R
.X	C2Rp
Y.	C2Lp

Right Dalek motif