

Variation on a mitten from Oppland



Norsk Folkemuseum

The original mitten is from the first decade of the 20th C. I've charted a part of the pattern.

The original mitten had a count off 4x5 stitches pr cm which is approximately 20x25 stitches pr 2x2 inches.

The original yarn was hanspun and the colorway was black on white.

NEEDLES

5 dpls / 2 circular needles / 1 magic loop : 3.5mm or US 4

THE YARN

1 Skein of each color, 100 % wool, preferably not superwash

ALTERATIONS

I recommend doing a test swatch to determine the necessary needle size

Enlarge the mitten size by using a larger sized needle and / or adding to the pattern on the sides

Reduce the mitten size by using a smaller sized needle and / or reducing the pattern on the sides

SYMBOLS



Purl

Knit



Increase 1 stitch



Left slanted decrease. Traditional method . K2tog tbl.



Right slanted decrease. Traditional method . K2tog.



Slip stitch, k2tog, slip stitch over. Pull thread through on the last stitch.

THE MITTEN

Cast on 38 stitches

Knit pattern as charted

35 *Knit the stitches indicated in green with a scrap yarn, cast on 11 stitches*

or

36 *Knit 11 stitches with a piece of scrap yarn, transfer the knit stitches back to the left needle, knit row*

36 as charted

Continue pattern as charted

Pull the thread through the last stitches

THE THUMB

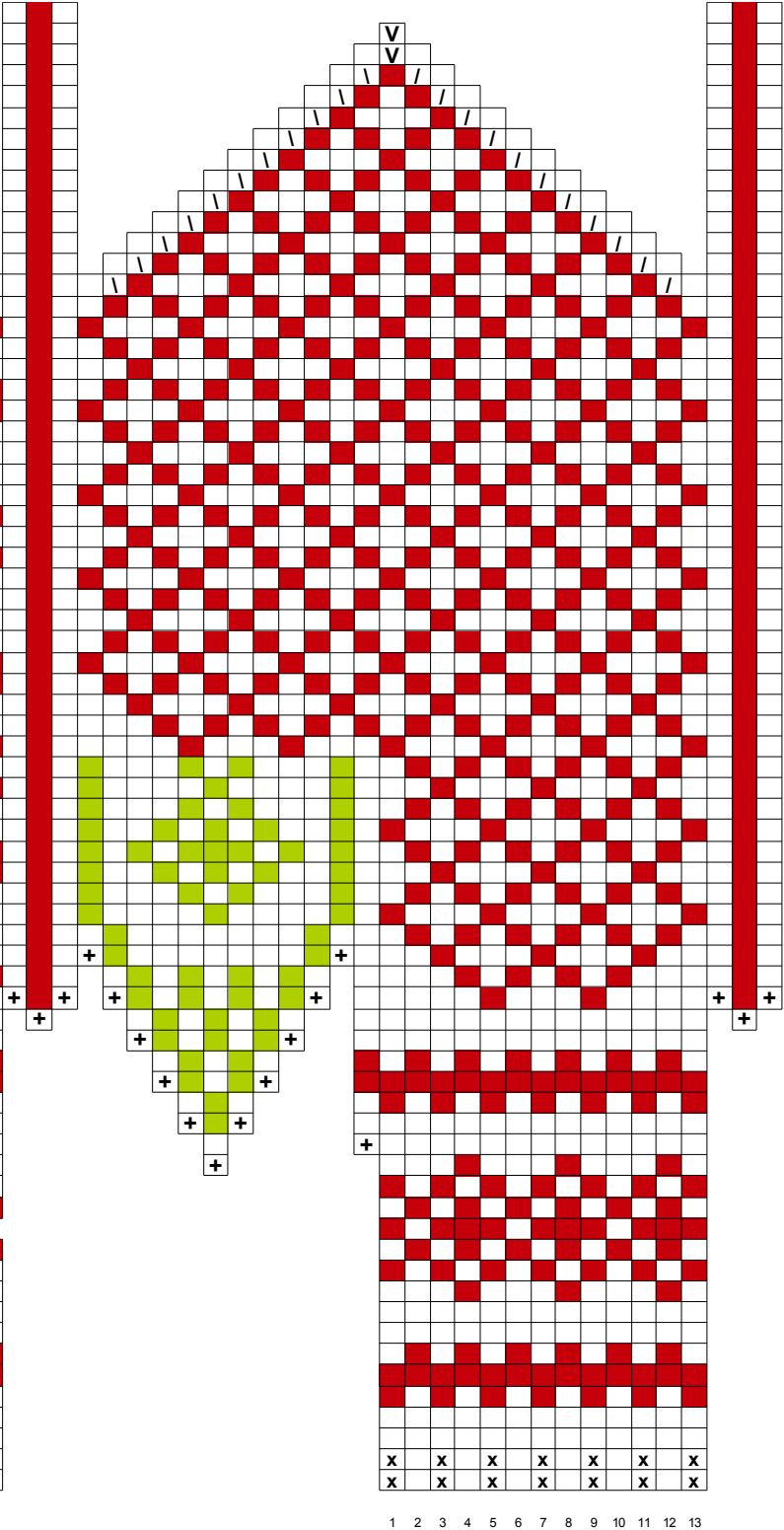
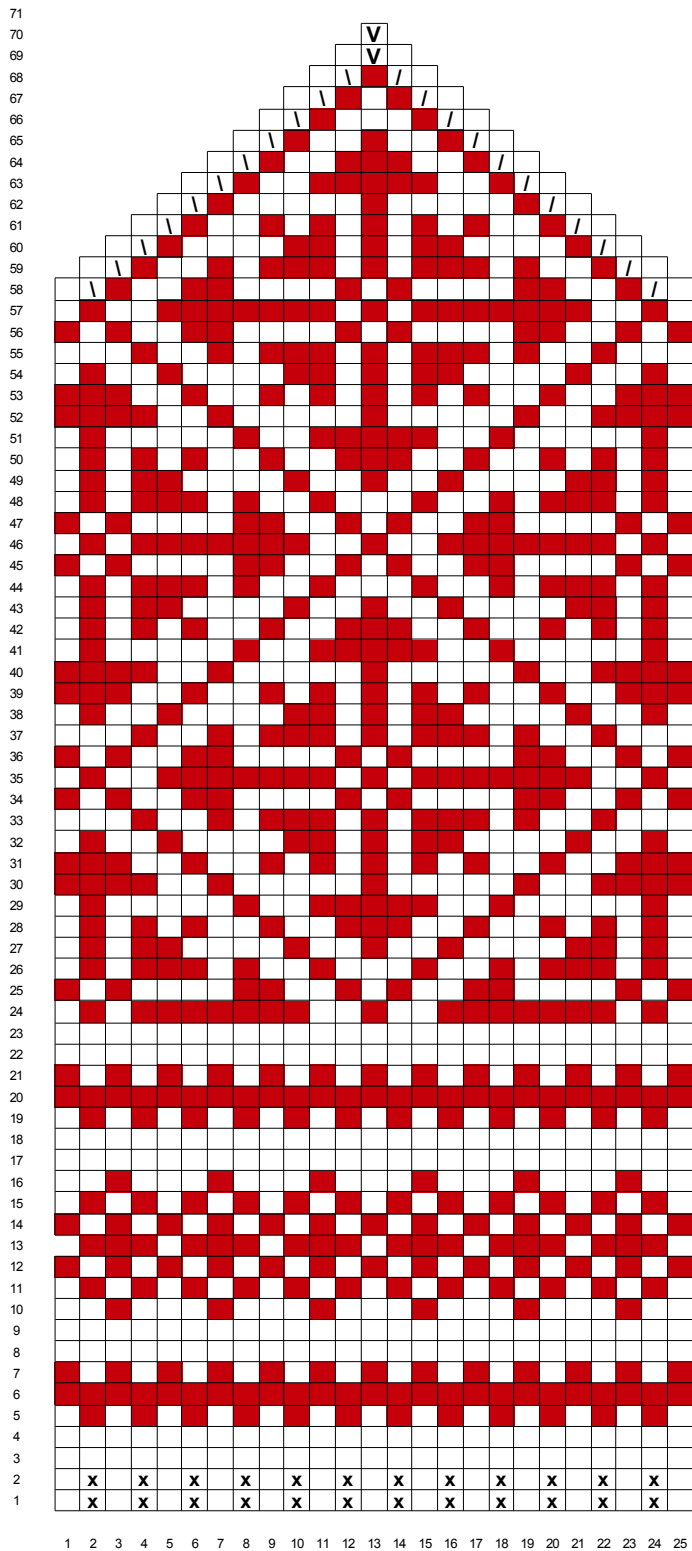
Pick up the stitches on the scarp yarn

Pick up 11 stitches opposite

Pick up 3 stitches on each side

Knit pattern as charted

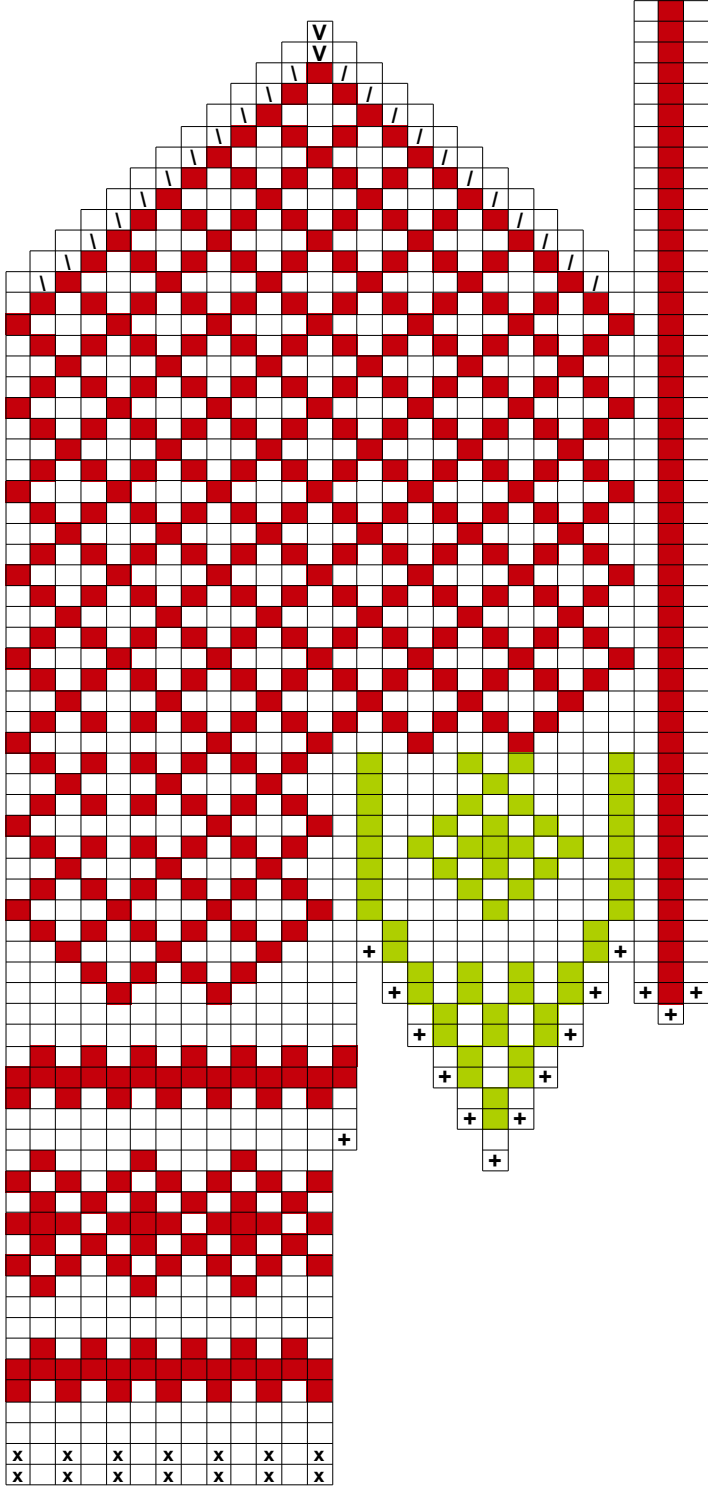
Pull the thread through the last stitches



71
70
69
68
67
66
65
64
63
62
61
60
59
58
57
56
55
54
53
52
51
50
49
48
47
46
45
44
43
42
41
40
39
38
37
36
35
34
33
32
31
30
29
28
27
26
25
24
23
22
21
20
19
18
17
16
15
14
13
12
11
10
9
8
7
6
5
4
3
2
1

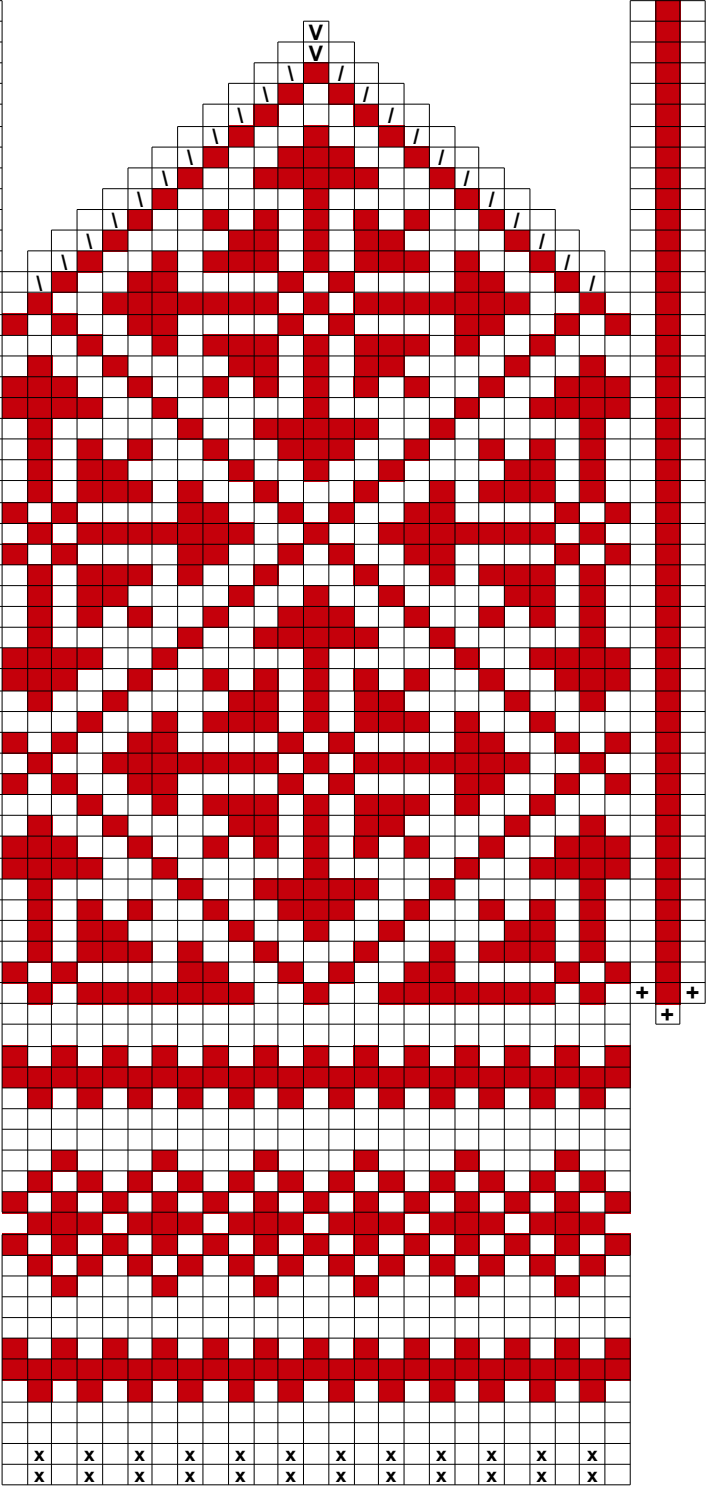
71
70
69
68
67
66
65
64
63
62
61
60
59
58
57
56
55
54
53
52
51
50
49
48
47
46
45
44
43
42
41
40
39
38
37
36
35
34
33
32
31
30
29
28
27
26
25
24
23
22
21
20
19
18
17
16
15
14
13
12
11
10
9
8
7
6
5
4
3
2
1

71
70
69
68
67
66
65
64
63
62
61
60
59
58
57
56
55
54
53
52
51
50
49
48
47
46
45
44
43
42
41
40
39
38
37
36
35
34
33
32
31
30
29
28
27
26
25
24
23
22
21
20
19
18
17
16
15
14
13
12
11
10
9
8
7
6
5
4
3
2
1



1 2 3 4 5 6 7 8 9 10 11 12 13

71
70
69
68
67
66
65
64
63
62
61
60
59
58
57
56
55
54
53
52
51
50
49
48
47
46
45
44
43
42
41
40
39
38
37
36
35
34
33
32
31
30
29
28
27
26
25
24
23
22
21
20
19
18
17
16
15
14
13
12
11
10
9
8
7
6
5
4
3
2
1



1 2 3 4 5 6 7 8 9 10 11 12 13 14 15 16 17 18 19 20 21 22 23 24 25

