

ADAMAS SHAWL

DESIGNED BY MIRIAM L. FELTON



"Adamas" in Greek means indomitable or untamable. This name was given to diamonds because of their ability to scratch anything, while not being scratched themselves. The diamond motif in this shawl was adapted from the pattern for a bread cloth in Sophia Caulfeild's *Dictionary of Needlework*, first published in 1882.

SPECIFICATIONS

Yarn: 700-800 yards of laceweight yarn. Sample is shown in KnitPicks Shadow in the Lost Lake colorway

Needles: 3.75mm (US 5) 24" or 30" circular

Gauge: 4.5 sts and 6 rows per inch square after blocking

Finished Sizes: 72" across the top and 36" from neck to point

Notions: 4 stitch markers (more may be used to mark the pattern repeats in the lace, if desired), tapestry needle to weave in ends

ABBREVIATIONS

k: knit

p: purl

k2tog: knit 2 together

yo: yarn over

sl: slip

tbl: through the back loop

ssk: slip 2 sts separately knit-wise, then knit them together tbl.

sl1, k2tog, pssso: slip 1 stitch, knit 2 tog, pass slipped stitch over.

RS: Right Side of work

WS: Wrong Side of work

CONSTRUCTION:

This shawl is worked from the neck down, using yarn overs on each end of each right side row to shape the "wings" and paired yarn overs in the center of each right side row (separated by a center stitch) to shape the point down the spine. These 4 increased stitches are added every right side row, making each row successively longer than the last, so that what started with 5 stitches cast on, ends with hundreds.

NOTES:

- All wrong side rows are worked with 2 edge stitches in garter stitch and all stitches between purled.
- If you desire a shorter or longer shawl, just reduce or increase the repeats of Chart 2.
- All charts are also given with text transcriptions of the chart. The chart legend is on page 3 of this pattern.
- 4 main markers are used. After being placed while working row 3 the 2 on the ends separate the garter edge stitches on each side of the shawl from the body, and the two in the middle flank the center stitch. Markers are mentioned when they are placed, and not mentioned thereafter. They should simply be slipped when you come to them. You may choose to place stitch markers to denote lace repeats (the red lines on the chart).
- If you use stitch markers to mark lace repeats, at the beginning of every repeat of Chart 2 you will need to shift these repeat markers and add new ones as you increase the number of stitches in the row.
- If you are using stitch markers for every repeat, **every time a double decrease is next to a stitch marker**, you will have to 'borrow' stitches from the other side of the marker to complete the double decrease, so for instance, in Chart #2, row 9, the decrease should be worked as follows: slip 2 stitches separately, remove marker, slip one stitch back to the left hand needle, k2tog, pssso, re-place marker and continue on.

PATTERN:

-Cast on 5 sts using a cable cast on.

Row 1: k2, yo, k1, yo, k2 (7 sts).

Row 2: k2, p3, k2.

Row 3: k2, pm, yo, k1, yo, pm, k1 (center stitch), pm, yo, k1, yo, pm, k2 (11 sts).

Row 4: k2, p7, k2.

Row 5: k2, yo, k3, yo, k1 (center stitch), yo, k3, yo, k2 (15 sts).

Row 6: K2, p11, k2.

-Work Rows 1-20 of Chart 1

-Work Rows 1-10 of Chart 2, 14 times

-Work Rows 1-12 of Chart 3

Once Chart 3 is complete, bind off **VERY LOOSELY** on RS as follows: K2, *slip left hand needle into those 2 sts through the front and in front of the right hand needle, k2tbl. K1, repeat from * until all stitches are bound off. Pull end through final stitch. Weave in ends.





Wet block by soaking in lukewarm water or a Euclan bath for 15-20 min, until shawl is thoroughly saturated. Pin to finished measurements. Place a pin in each point and tug a bit to make it stand out. Blocking may be aided with blocking wires or strong cotton crochet thread. Allow shawl to dry completely before removing pins.

Legend:

knit
RS: knit stitch
WS: purl stitch

No Stitch
RS: Placeholder - No stitch made.
WS: <none defined>

yo
RS: Yarn Over
WS: Yarn Over

sslk
RS: Slip one stitch as if to knit, Slip another stitch as if to knit. Insert left-hand needle into front of these 2 stitches and knit them together
WS: Purl two stitches together in back: loops, inserting needle from the left, behind and into the backs of the 2nd & 1st stitches in that order

k2tog
RS: Knit two stitches together as one stitch
WS: Purl 2 stitches together

purl
RS: purl stitch
WS: knit stitch

s11 k2tog pssso
RS: slip 1, k2tog, pass slip stitch over k2tog
WS: <none defined>

Denotes Repeat
Repeat area within red squares. More repeats are added as more stitches are added

Stitch Marker
Represents where 4 main stitch markers should sit

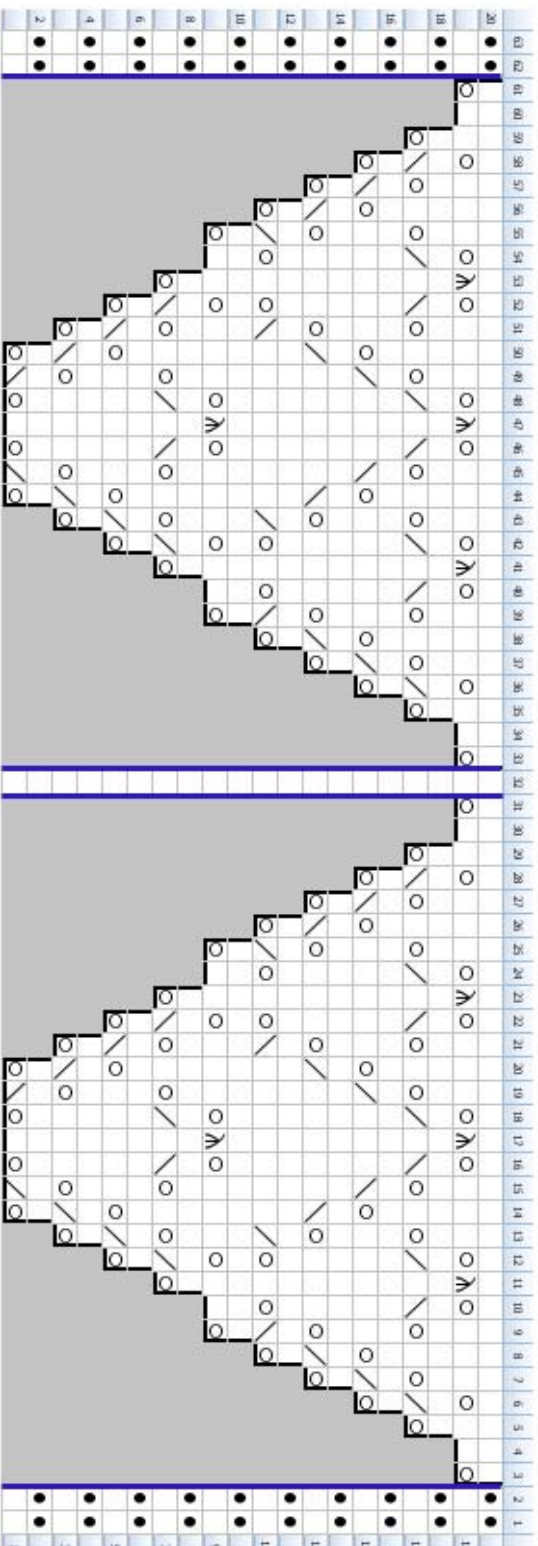
Created in Knit Visualizer (www.knitfoundry.com)



For pattern support, discussion forums, more patterns, and inspiration please visit <http://www.mimknits.com>

Copyright notice: This pattern may be used for personal use only. This pattern, items made from this pattern or any portion of pattern or item may not be resold, or otherwise used for profit without express permission from the designer. This pattern may also not be distributed for free by any individual or shop without permission. Please be nice.

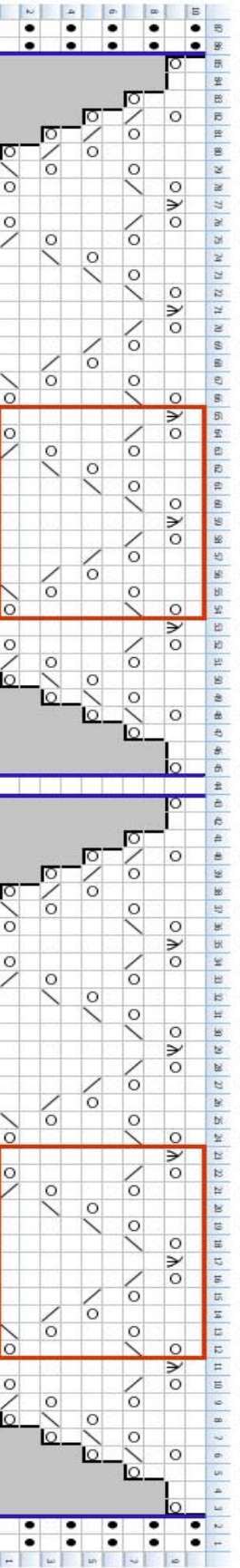
CHART 1:



****Repeats are marked by bolded text within parentheses. Center stitch is underlined.**

- R1 (RS):** k2, yo, k2tog, yo, k1, yo, **ssk**, yo, k1, yo, k2tog, yo, k1, yo, ssk, yo, k2
- R2 (WS) and all WS rows:** k2, purl to last 2 sts, k2
- R3:** k2, yo, k2tog, yo, k3, yo, ssk, yo, k1, yo, k2tog, yo, k3, yo, ssk, yo, k2
- R5:** k2, yo, k2tog, yo, k5, yo, ssk, yo, k1, yo, k2tog, yo, k5, yo, ssk, yo, k2
- R7:** k2, yo, k2tog, yo, k1, yo, ssk, k1, k2tog, yo, k1, yo, ssk, yo, k1, yo, k2tog, yo, k1, yo, ssk, yo, k2
- R9:** k2, yo, k2, yo, k3, yo, s11 k2tog pssso, yo, k3, yo, k2, yo, k1, yo, k2tog, yo, k1, yo, ssk, k1, k2tog, yo, k1, yo, ssk, yo, k2
- R11:** k2, yo, ssk, yo, k1, yo, k2tog, k7, ssk, yo, k1, yo, k2tog, yo, k1, yo, ssk, yo, k1, yo, k2tog, yo, k2
- R13:** k2, yo, k2tog, yo, k3, yo, ssk, k5, k2tog, yo, k3, yo, ssk, yo, k1, yo, k2tog, yo, k3, yo, ssk, yo, k2
- R15:** k2, yo, k2tog, yo, k5, yo, ssk, k3, k2tog, yo, k5, yo, ssk, yo, k1, yo, k2tog, yo, k5, yo, ssk, yo, k2
- R17:** k2, yo, k2tog, yo, k1, (yo, ssk, k1, k2tog, yo, k1) 3 times, yo, ssk, yo, k1, yo, k2tog, yo, k1, (yo, ssk, k1, k2tog, yo, k1) 3 times, yo, ssk, yo, k2
- R19:** k2, yo, k2, yo, k3, (yo, s11 k2tog pssso, yo, k3) 3 times, yo, k2, yo, k1, yo, k2, yo, k3, yo, s11 k2tog pssso, yo, k3) 3 times, yo, k2, yo, k2
- R20:** k2, purl to last 2 sts, k2

CHART 2:



Created in Knit Visualizer (www.knitfoundry.com)

**Repeats are marked by bolded text within parentheses. Center stitch is underlined.

R1 (RS): k2, yo, ssk, yo, k1, (**yo, k2tog, k7, ssk, yo, k1**), yo, k2tog, k7, ssk, yo, k1, yo, k2tog, yo, k1, yo, ssk, yo, k1, (**yo, k2tog, k7, ssk, yo, k1**), yo, k2tog, k7, ssk, yo, k1, yo, k2tog, yo, k2

R2 (WS) and all WS rows: k2, purl to last 2 sts, k2

R3: k2, yo, k2tog, yo, k2, (**k1, yo, ssk, k5, k2tog, yo, k2**), k1, yo, ssk, k5, k2tog, yo, k3, yo, ssk, yo, k1, yo, k2tog, yo, k2, (**k1, yo, ssk, k5, k2tog, yo, k2**), k1, yo, ssk, k5, k2tog, yo, k3, yo, ssk, yo, k2

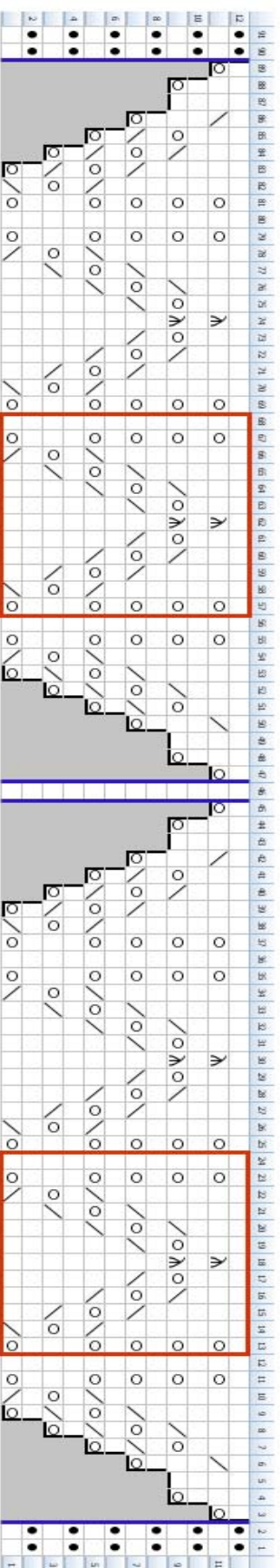
R5: k2, yo, k2tog, yo, k3, (**k2, yo, ssk, k3, k2tog, yo, k3**), k2, yo, ssk, k3, k2tog, yo, k5, yo, ssk, yo, k1, yo, k2tog, yo, k3, (**k2, yo, ssk, k3, k2tog, yo, k3**), k2, yo, ssk, k3, k2tog, yo, k5, yo, ssk, yo, k2

R7: k2, yo, k2tog, yo, k1, yo, ssk, k1, (**k2tog, yo, k1, yo, ssk, k1, k2tog, yo, k1, yo, ssk, k1**), k2tog, yo, k1, yo, ssk, k1, k2tog, yo, k1, yo, ssk, k1, (**k2tog, yo, k1, yo, ssk, k1, k2tog, yo, k1, yo, ssk, k1**), k2tog, yo, k1, yo, ssk, k1, k2tog, yo, k1, yo, ssk, k1, k2tog, yo, k1, yo, ssk, yo, k2

R9: k2, yo, k2, yo, k3, yo, sl1 k2tog pssso, (**yo, k3, yo, sl1 k2tog pssso, yo, k3, yo, sl1 k2tog pssso, yo, k3, yo, sl1 k2tog pssso, yo, k3, yo, sl1 k2tog pssso, yo, k3, yo, sl1 k2tog pssso, yo, k3, yo, sl1 k2tog pssso**), yo, (k3, yo, sl1 k2tog pssso, yo) twice, k3, yo, k2, yo, k1, yo, k2, yo, k3, yo, sl1 k2tog pssso, (**yo, k3, yo, sl1 k2tog pssso, yo, k3, yo, sl1 k2tog pssso, yo, k3, yo, sl1 k2tog pssso, yo, k3, yo, sl1 k2tog pssso**), yo, (k3, yo, sl1 k2tog pssso, yo) twice, k3, yo, k2, yo, k2

R10: k2, purl to last 2 sts, k2

CHART 3:



**Repeats are marked by bolded text within parentheses. Center stitch is underlined.

R1 (RS): k2, yo, ssk, yo, k1, **(yo, k2tog, k7, ssk, yo, k1)**, yo, k2tog, k7, ssk, yo, k1, yo, k2tog, yo, k1, yo, ssk, yo, k1, **(yo, k2tog, k7, ssk, yo, k1)**, yo, k2tog, k7, ssk, yo, k1, yo, k2tog, yo, k2

R2 (WS) and all WS rows: k2, purl to last 2 sts, k2

R3: k2, yo, k2tog, yo, k2, **(k1, yo, ssk, k5, k2tog, yo, k2)**, k1, yo, ssk, k5, k2tog, yo, k3, yo, ssk, yo, k2

R5: k2, yo, k2tog, yo, k2tog, yo, k1, **(yo, ssk, yo, ssk, k3, k2tog, yo, k2tog, yo, k1)**, yo, ssk, yo, ssk, k3, k2tog, yo, k2tog, yo, k1, yo, ssk, yo, ssk, yo, k2

R7: k2, yo, k2tog, yo, k2tog, k1, yo, k1, **(yo, k1, ssk, yo, ssk, k1, k2tog, yo, k2tog, k1, yo, k1)**, yo, k1, ssk, yo, ssk, k1, k2tog, yo, k2tog, k1, yo, k1, yo, k1, ssk, yo, ssk, yo, k1, yo, k2tog, yo, k2tog, k1, yo, k1, **(yo, k1, ssk, yo, ssk, k1, k2tog, yo, k2tog, k1, yo, k1)**, yo, k1, ssk, yo, ssk, k1, k2tog, yo, k2tog, k1, yo, k1, yo, k1, ssk, yo, ssk, yo, ssk, yo, k2

R9: k2, yo, k2, yo, k2tog, k2, yo, k1, **(yo, k2, ssk, yo, sl1 k2tog pssso, yo, k2tog, k2, yo, k1)**, yo, k2, ssk, yo, sl1 k2tog pssso, yo, k2tog, k2, yo, k1, yo, k2, ssk, yo, k1, yo, k2, yo, k2, yo, k2tog, k2, yo, k1, k2, yo, k2, yo, k2, yo, k2, yo, k2, yo, k2, yo, k2, yo, k2, yo, k2, yo, k2, yo, k2, yo, k2, yo, k2, yo, k2, yo, k2

R11: k2, yo, k2, k2tog, k4, yo, k1, **(yo, k4, sl1 k2tog pssso, k4, yo, k1)**, yo, k4, sl1 k2tog pssso, k4, yo, k1, yo, k4, ssk, k2, yo, k1, yo, k2, k2tog, k4, yo, k1, **(yo, k4, sl1 k2tog pssso, k4, yo, k1)**, yo, k4, sl1 k2tog pssso, k4, yo, k1, yo, k4, ssk, k2, yo, k2

R12: k2, purl to last 2 sts, k2