

Evangeline

design by Mona Schmidt – Knit Stricken!



Bulky yarn makes this a quick knit. I made this for a 1 year old, but she can grow into it. You can play with the size by knitting with a finer yarn.

Finished measurements

Chest circumference: about 26"

Length: about 15.5" (bottom edge to shoulder)

Length of sleeves: about 9" (bottom edge to underarm)

Neck opening: about 5" across



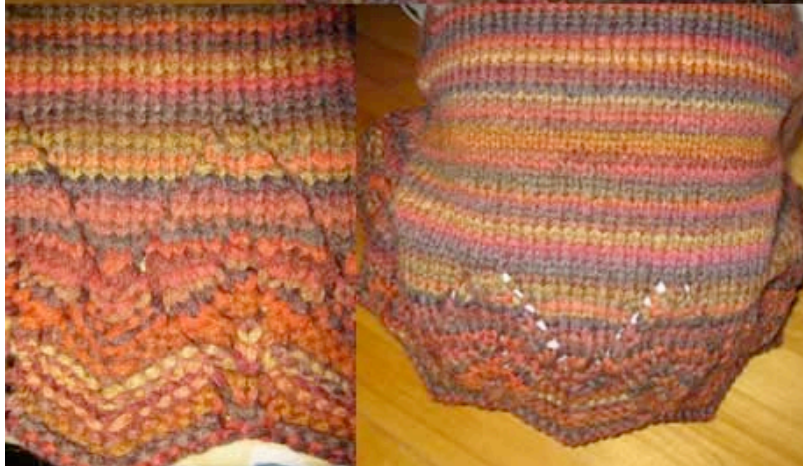
Yarn

6 balls Artful Yarns "Reality" (51% wool, 47% acrylic, 2% nylon); 70 yds (64 m)/50 g

Needles

Size 9 (5.5 mm) circular knitting needles, 24"

Size 9 (5.5 mm) double pointed needles



Gauge

16 sts to 24 rows in Stockinette Stitch

Notions

Tapestry needle, stitch markers, 5 buttons (3/4")

Pattern is for personal use only.

Evangeline

Lower Body

With circular needle CO 105 sts. K3, work leaf chart across next 99 sts, k3. Keeping first and last 3 sts in garter, work height repeat of chart once. Work 4 more rows.

Next (WS) row: K1, k2tog, yo, work as est to end of row. Work WS row. 1 buttonhole made. *Rep buttonhole row every 10th row from here on throughout.* Work until piece measures about 9.5" from bottom edge (tip of leaf pattern), ready to beg a WS row.

Next dec row (WS): Work 24 sts as est, bind off 6 sts, work 45 sts, BO 6 sts, work to end.

Sleeves (make 2)

With double pointed needles CO 30 sts. Distribute evenly onto 4 needles, close to round, careful not to twist sts. Purl one rnd. Change to St st and work until piece measures about 2".

Next inc rnd: K1, m1, work to last sts, m1, k1 – 32 sts. Repeat inc rnd every 10th rnd 3 times more – 38 sts. Work until sleeve measures 9".

Next dec rnd: Work to 3 last sts, BO 6 sts. Place rem sts on holder.

Raglan shaping

Join lower body with sleeves (RS): Work 24 sts of right front as est, place marker (pm), work 32 sts from first sleeve, pm, work 45 sts from back, pm, work 32 sts from second sleeve, pm, work to end – 157 sts. Work 1 WS row.

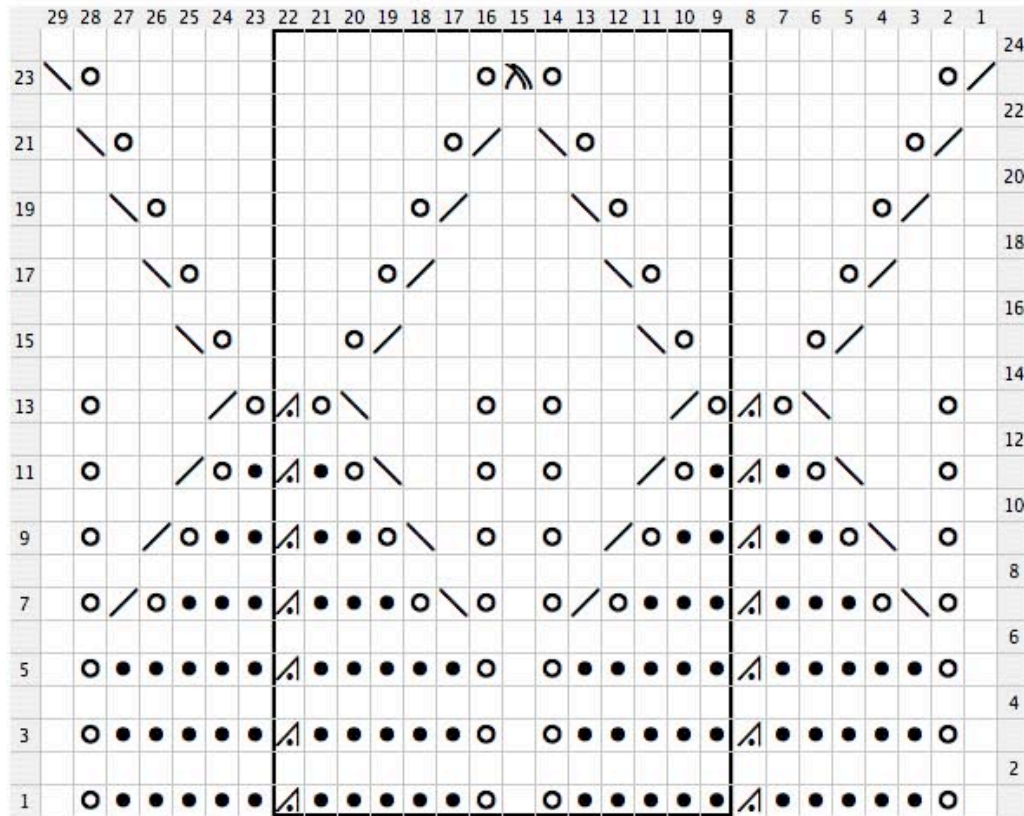
Next dec row (RS): Work to 3 sts before marker, ssk, k1, slip marker (sl m), k2tog, work to 2 sts before next marker, ssk, k1, k2tog; rep once more, work to end – 149 sts. Work WS row. Repeat dec row 11 times more – 53 sts. K 1 WS row, k 2 more rows, bind off rem sts.

Finishing

Weave in ends. Sew underarms. Sew on buttons. Block.

Evangeline

Evangeline Leaf Pattern



Legend:

☐ knit
RS: knit stitch
WS: purl stitch

☒ yo
RS: Yarn Over
WS: Yarn Over

☒ purl
RS: purl stitch
WS: knit stitch

☒ p3tog
RS: Purl three stitches together as one
WS: Knit three stitches together as one

☒ ssk
RS: Slip one stitch as if to knit, Slip another stitch as if to knit. Insert left-hand needle into front of these 2 stitches and knit them together
WS: Purl two stitches together in back loops, inserting needle from the left, behind and into the backs of the 2nd & 1st stitches in that order

☒ k2tog
RS: knit two stitches together as one stitch
WS: Purl 2 stitches together

☒ sl2kw k1 p2sso
RS: <none defined>
WS: <none defined>

Created in Knit Visualizer (www.knitfoundry.com)

Notes:

Box marks repeat

Pattern is for personal use only.