

SPRUCE COWL

By Monique Gascon from Deux Brins de Maille

wear it like a
cowl, wear it like
a scarf buttoned
or unbuttoned,
it's your choice



Your mood, your choice ...

Finished size :

- Approximately
- Length : 61 inches (155 cm)
- Width : 11 inches (28 cm)

Yarn :

- Camelino from Knit One Crochet Too
- 763 yards (698 m)
- Worsted / 10 ply (9 wpi)
- Texture : Plied
- 90% Merino Wool / 10% Camel

Gauge :

20 sts = 4 inches

Skill Level :

Beginner

Needles :

2 needles of size US 7 (4,5 mm)

Notions :

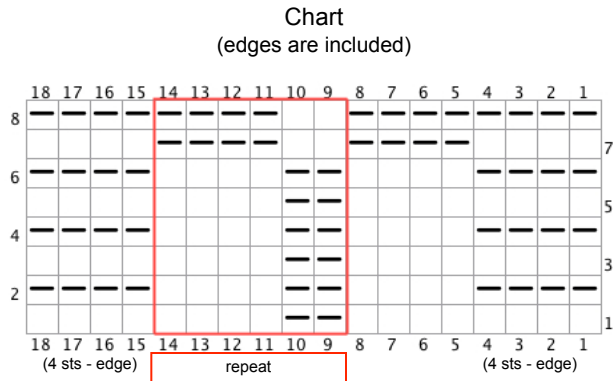
- Tapestry needle
- 10 buttons (18 mm)

Abbreviations :

- CO : cast-on
- st : stitch
- sts : stitches
- k : knit
- p : purl
- k2tog : knit 2 stitches together
- yo : yarn over
- sl1 : slip 1
- kwise : knitwise
- BO : bind-off

SPRUCE COWL

Instructions



Key Chart	
	Knit k
	(RS) Knit (WS) Purl
	Purl p
	(RS) Purl (WS) Knit

1. Read carefully all the instructions before beginning.

2. The first k4 at the beginning of each row and the k3, sl1 kwise at the end of each row are the instructions for the edges.

CO 66 sts

Row 1 : k4, k4, *p2, k4*, repeat from * to * to the last 4 sts, k3, sl1 kwise

Row 2 : k4, *p4, k2*, repeat from * to * to the last 8 sts, p4, k3, sl1 kwise

Row 3 : k4, k4, *p2, k4*, repeat from * to * to the last 4 sts, k3, sl1 kwise

Row 4 : k4, *p4, k2*, repeat from * to * to the last 8 sts, p4, k3, sl1 kwise

Row 5 : k4, k4, *p2, k4*, repeat from * to * to the last 4 sts, k3, sl1 kwise

Row 6 : k4, *p4, k2*, repeat from * to * to the last 8 sts, p4, k3, sl1 kwise

Row 7 : k4, p4, *k2, p4*, repeat from * to * to the last 4 sts, k3, sl1 kwise

Row 8 : k4, *k4, p2*, repeat from * to * to the last 8 sts, k4, k3, sl1 kwise

Repeat these 8 rows until the scarf measures approximately 60 inches (152,5 cm).

BUTTONHOLES

The buttonholes are made in each knit section of the point.

Row 1 : k4, k4, *p2, k4*, repeat from * to * to the last 4 sts, k3, sl1 kwise

Row 2 : k4, *p4, k2*, repeat from * to * to the last 8 sts, p4, k3, sl1 kwise

Row 3 : k4, *k1, k2tog, yo, k1, p2*, repeat from * to * to the last 4 sts, **don't do the last p2**, k3, sl1 kwise (edge)

Row 4 : k4, *p4, k2*, repeat from * to * to the last 8 sts, p4, k3, sl1 kwise

Row 5 : k4, k4, *p2, k4*, repeat from * to * to the last 4 sts, k3, sl1 kwise

Row 6 : k4, *p4, k2*, repeat from * to * to the last 8 sts, p4, k3, sl1 kwise

Row 7 : BO loosely

Weaves in ends and block flat (if you want ... I did not block mine).

~~~~~

### My Favorite Tip

I always place stitch markers for delimiting the edges. They help me to remember where I have to do them without counting everytime.



one, two, tree  
and many others  
manners to wear  
this accessory

Contact me ... Follow me

[deuxbrins@hotmail.ca](mailto:deuxbrins@hotmail.ca)

<http://www.ravelry.com/designers/monique-gascon>

<http://www.etsy.com/shop/DeuxBrinsDeMaille>

<http://www.facebook.com/DeuxBrinsDeMaille>

<http://une-maille-a-la-fois.blogspot.com/>

*This pattern is for personnal use only,  
not commercial use in any manner.*

*Thanks to respect my work.*

*All right reserved*

*August 2011, (1st version).*