

# HAT AND SCARF WITH RHOMBUSES

created by Nadya Kalakina



# HAT

*This is my first instruction of my own knitting design. My English is still not perfect but I hope it is all right. If you notice some mistake, please let me know.*

Hat knit in the round ribbed brim

## Knitted measurements

- Brim circumference (unstretched) Approx 18"/46cm

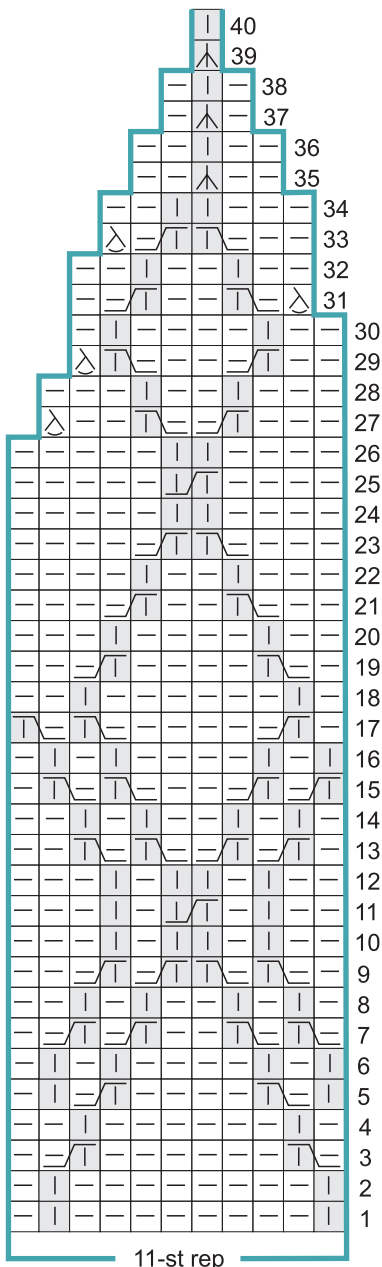
## Materials

- 1 hank (50g=75m) of Thille Swiss Castle (60% Alpaca wool, 30% Merino wool, 10% Acrylic). Color 22007;
- One size 4/3.5mm circular needle, 32"/80cm long (from tip to tip);
- One size 6/4mm circular needle, 32"/80cm long;
- One set (5) size 2/2.75mm double-pointed needles;
- Stitch marker







## Gauges

- 18sts and 21 rnds = 4"/10cm (including rib)

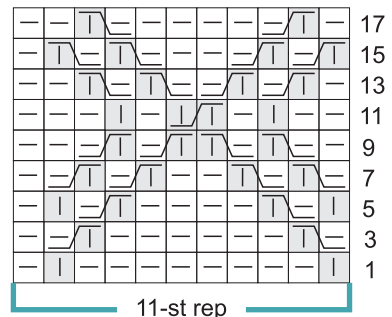
Hat Chart



## Stitch Key

-  - k
-  - p
-  - Right Purl Twist (k in front of work)
-  - Left Purl Twist (k in front of work)
-  - p 2 tog
-  - k 3 tog

Scarf Chart



# Hat

With smaller needle, cast 78 sts, pm and join, being careful not to twist.  
Next rnd beg rib k1p1 round. Rep this rnd until piece measures 1"/2.5cm (my 5 rnds).

## Beg Chart

Change to larger needle. Work 11-sts rep of chart 7 times around. In first rnd decrease sts from 78 to 77.

Work chart through rnd 40, changing to dpns when sts no longer fit comfortably on circular needle.

## Finishing

With crochet hook thread the tail through all sts, draw up tightly and fasten off.

# SCARF

## Knitted measurements

- Brim circumference (unstretched) Approx 64 1/2"/164cm

## Materials

- 3 hank (50g=75m) of Thille Swiss Castle (60% Alpaca wool, 30% Merino wool, 10% Acrylic). Color 22007;
- Two size 8/5mm needles;
- One size 2/1.75mm crochet hook

## Gauges

- 16sts and 17 rows = 4"/10cm

## Scarf

Cast on 35sts. Work 11-sts rep of chart 3 times. In wrong side follow to sts. Rep chart 15 times and after that work two rows of scarf chart and end on right side.

## Finishing

Bind off sts loosely as follows to end of row. Weave in ends. Steam-iron to smooth the fabric.