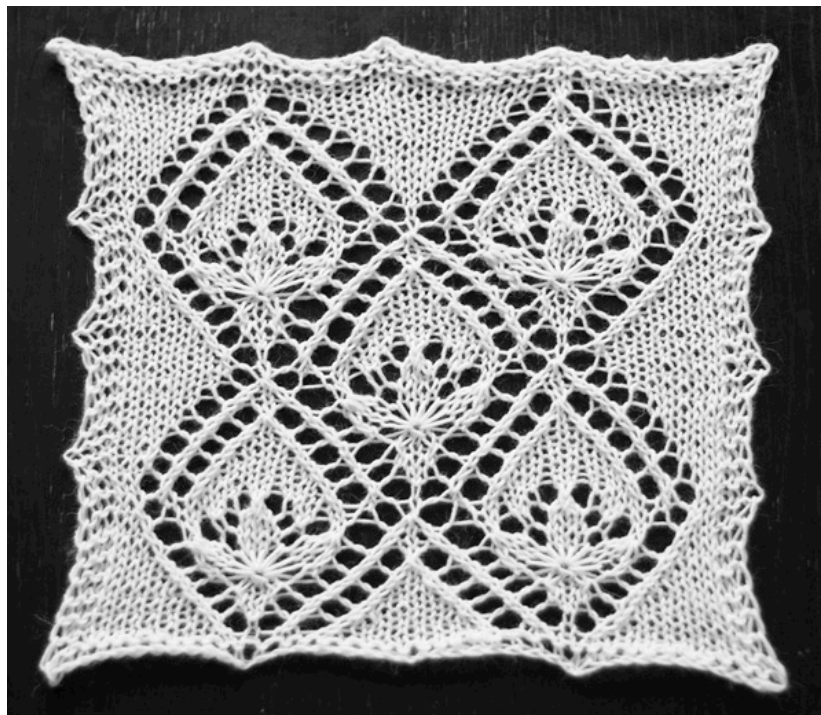


Double waterlily 1: motif for shawls



Introduction

This is variation on one of the most famous and beautiful motifs for Haapsalu shawls “Waterlily”. The pattern is designed for knitting of lace shawls.

Description and tips

Chart 1 and **2** include only odd number rows. All even row stitches are knitted purlwise.

To include this motif into you knitting count needed amount of stitches as: **17 sts** (edges of the motif) + **16 sts · X times** (repeated middle part of the motif).

Cast on stitches, knit repeating **Chart 1** until you reach the needed length. During the last repeat of the motif knit rows 1 - 14 according to **Chart 1**, than knit all rows from **Chart 2**.

Legend



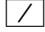





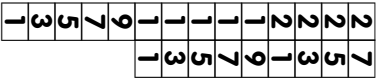
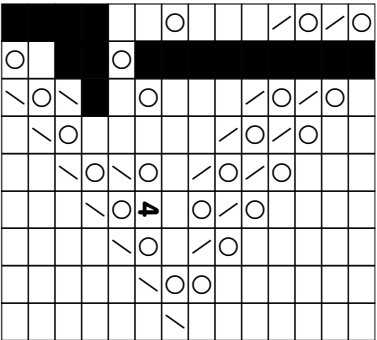
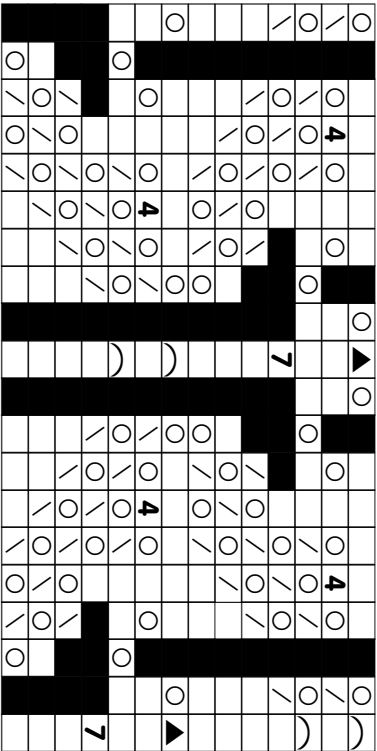
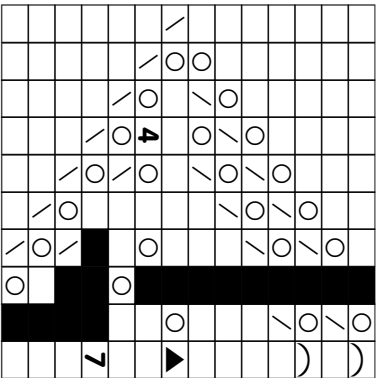
-  k, knit
-  yo, yarn over
-  k2tog, knit 2 stitches together knitwise
-  ssk, slip 2 stitches as if to knit, then knit those 2 stitches together
-  k4tog, knit 4 stitches together knitwise
-  k3tog7, knit 3 stitches together and increase of them 7 stitches - knit stitches alternatively with yarn over
-  slip 1 knit 2, slip one stitch knitwise, knit 2 stitches together, pass slipped stitch over two stitches knit together
-  knit 3 stitches together with the middle one above. Slip two stitches knitwise, knit next stitch and pass two slipped stitches over third stitch.

Chart 1

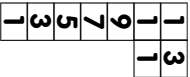
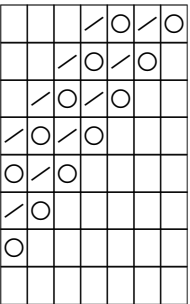
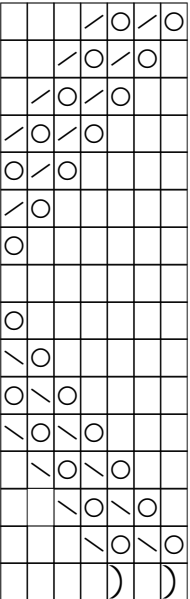
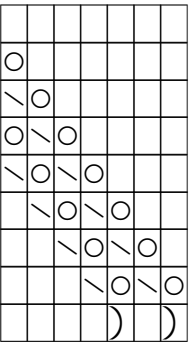


9 sts +

16 sts · X times +

8 sts

Chart 2



9 sts +

16 sts · X times +

8 sts