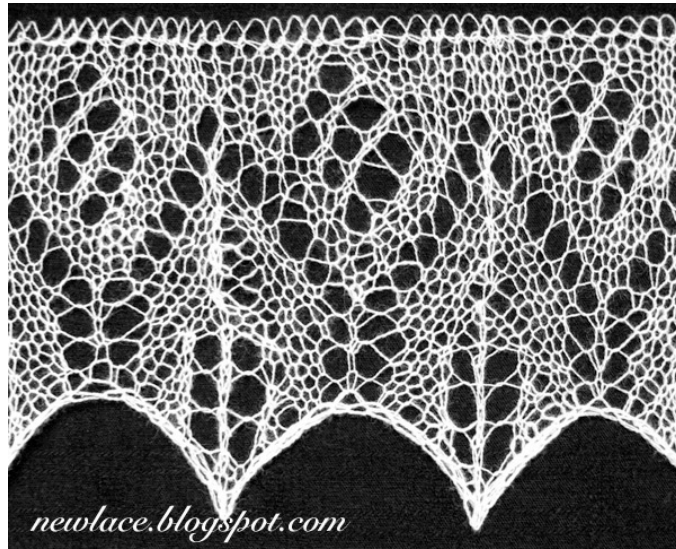


## Edge lace 2.4



Picture 1.

### Introduction

A zigzag edge lace (**edge lace 2**) stitch motif is combined with the little netlike motif.

### Description and tips

Chart includes odd rows only. The edge and repetitive middle part of the motif are separated by the empty space. Numbers on the right side of the charts indicate row numbers. Edge stitches are not included.

For stitches of **even** rows there are two possibilities:

- purl all stitches and you will get **stockinette based lace texture** as on the **Picture 1**
- or
- knit all stitches and you will get **garter stitch based lace texture** as it is traditionally done for Haapsalu shawl borders.

Chart 1 requires the following amount of stitches: **15 stitches** (edges of the motif) + **14 stitches · X times** (repeated middle part of the motif) + 2 (or more ) edge stitches (if necessary).

Cast on stitches using **knitted on method** and double yarn with needles at least 0.5 - 1 size larger than you will be using for the edge lace knitting.

Knit all rows from Chart 1.

## Legend



k, knit



yo, yarn over



knit 3 stitches together with the middle one above, slip two stitches knitwise, knit next stitch and pass two slipped stitches over third stitch



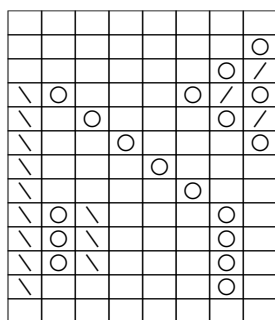
k2tog, knit 2 stitches together



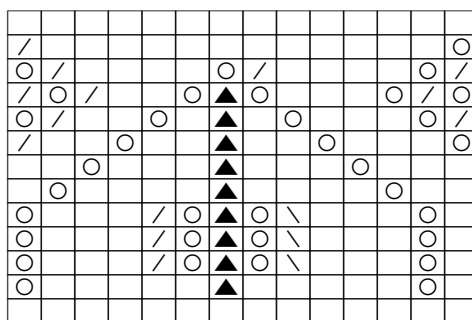
ssk, slip 2 stitches as if to knit, then knit those 2 stitches together

## Chart

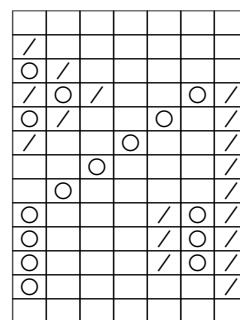
### Chart 1



8 stitches



+ 14 stitches · X times



+ 7 stitches

2	5
2	3
2	1
1	9
1	7
1	5
1	3
1	1
9	
7	
5	
3	
1	