

Snow Bunny



This top is inspired by the Kaver/Taku sweater, and the snowflake cable motif designed by Norah Gaughan.

This is a One Size pattern.

To create a larger or smaller top you must change the size of the finished hexagon so that the width from point to point across the center is one half the desired finished bust size. One side of the hexagon must also be a sufficient raglan seam length.

Any hexagon motif of the appropriate size can be substituted for the snowflake cable in this pattern. A coordinating flat hexagon motif will be required for the sleeves.

Some crochet is required for finishing the neckline (pink version).

Yarn: (Hot Pink version) Red Heart Lustersheen, split into plies.
(White/Ecru version) Aunt Lydia's Bamboo Crochet thread #10. (Approx. 105 yds)
Laceweight yarn would be a reasonable substitution for either.

Needles: US 00 (1.75mm) and US 000 (1.5mm) or what is needed to reach gauge

Hook: US steel #7 (1.65mm) or a size comparable to the needles you used

Gauge: Hexagon motif should measure 9cm (Pink version) or 10cm (White/Ecru version) from point to point across the center after blocking.

Back

With larger needles cast on 156 sts, join and purl one round.

Work the body chart six times per round.

Front

With larger needles cast on 132 sts and knit one row (WS)

Maintaining first and last stitch in reverse stockinette, work the body chart five times per row.

Sleeve 1

With larger needles cast on 78 sts, pick up and knit 26 sts along one side of back hexagon, pick up and knit 26 stitches from front partial hexagon from neck edge to first corner. (156 sts)

Join and purl one round.

Work the sleeve chart five times per round.

Sleeve 2

With larger needles cast on 78 sts, pick up and knit 26 stitches from front partial hexagon from last corner to the neck edge. Leaving one edge for the back of the neckline, pick up and knit 26 sts along the side of back hexagon. (156 sts)

Join and purl one round.

Work the sleeve chart five times per round.



Hem

Using smaller needles, with RS facing:

Starting at the join between the sleeve and back pick up and knit 27 sts to first corner, place marker, pick up and knit 26 sts to second corner, place marker, pick up and knit 27 sts to other underarm join.

Set up row: (WS) p2, kfb, *(p2, k2) until 2 sts before marker, kfb, p2, kfb, repeat from *, (p2, k2) until 3sts from end, kfb, p2

Row1: k1, ssk, *maintain rib to 1 st before corner, m1 (knit or purl as required by rib pattern), k2, m1, repeat from *, rib to last 3 sts, k2tog, k1

Row 2: Maintain ribbing pattern by knitting the knits and purling the purls

Repeat last two rows three more times, the last WS row should be unbroken 2x2 ribbing.

Bind off loosely in pattern.

Repeat for the front hem.

Finishing

Weave in ends and block sweater.

Neckline

(Pink version) Starting at the left shoulder corner, single crochet along the V neckline, taking care that the sides of the V lay flat and do not ripple or gather the knitted fabric.

Slip stitch along the back neckline and along the V neck edge, fastening off at the right shoulder corner.

(White/Ecru version) With smaller needles and right side facing, starting at the left shoulder pick up stitches evenly to the center of the V neck, approximately 3 stitches for every 4 rows. Pick up the same number of stitches up the right side to the shoulder.

Starting with a knit row, work 3-5 rows of reverse stockinette. Graft the live stitches to the inside of the neckline, encasing the row ends where stitches were picked up. Use the tails to tack down the ends of the neck finishing to the back neckline at the shoulders.

Sew hem and sleeve seams.

Sleeve Cuffs (seen on White/Ecru version)

Using smaller needles to pick up 26 sts around sleeve end.

Set up: k2tog, p2, (k2, p2) to last 2 sts, ssk

Rows 1-7: k1, p2, (k2, p2) to last st, k1

Bind off loosely. Test that the cuff will fit over your doll's hand before cutting yarn.

Weave in remaining ends.

Abbreviations

k – knit

p – purl

k2tog – knit 2 stitches together

p2tog – purl 2 stitches together

SSK – Slip 2 stitches knitwise, one at a time, return them to the left needle and knit them together through the back loops

SSP – Slip 2 stitches knitwise, once at a time, return them to the left needle and then purl them together through the back loops

C4B – [with cable needle] Slip 2 stitches onto the cable needle (cn) and hold to the back of the work, knit 2, knit 2 from the cn

[without cable needle] Slip 2 stitches with yarn in front, knit 2 stitches. Insert the left needle into the back of the 2 slipped stitches and remove the right needle from the last 4

stitches. Reinsert the right needle into the 2 stitches left off the needles and then knit the previously slipped stitches.

C4F – [with cable needle] Slip 2 stitches onto the cable needle (cn) and hold to the front of the work, knit 2, knit 2 from the cn

[without cable needle] Slip 2 stitches, knit 2 stitches. Insert the tip of the left needle into the front of the two slipped stitches and remove the right needle from the last 4 stitches. Insert the right needle into the 2 stitches left off the needles and then knit the 2 previously slipped stitches.

RT3 – [with cable needle] Slip 2 stitches onto the cable needle (cn) and hold to the back of the work, knit 1, purl 2 from the cn

[without cable needle] Slip 2 stitches with yarn in front, knit 1 stitch. Insert the left needle into the back of the 2 slipped stitches and remove the right needle from the last 3 stitches. Reinsert the right needle into the stitch left off the needles and purl the previously slipped stitches.

LT3 – [with cable needle] Slip 1 stitch onto the cable needle (cn) and hold to the front of the work, purl 2, knit 1 from the cn

[without cable needle] Slip 1 stitch, purl 2 stitches. Insert the tip of the left needle into the front of the slipped stitch and remove the right needle from the last 3 stitches. Insert the right needle into the stitch left off the needles and then knit the previously slipped stitch.

RT – [with cable needle] Slip 1 stitch onto the cable needle (cn) and hold to the back of the work, knit 1, knit 1 from the cn

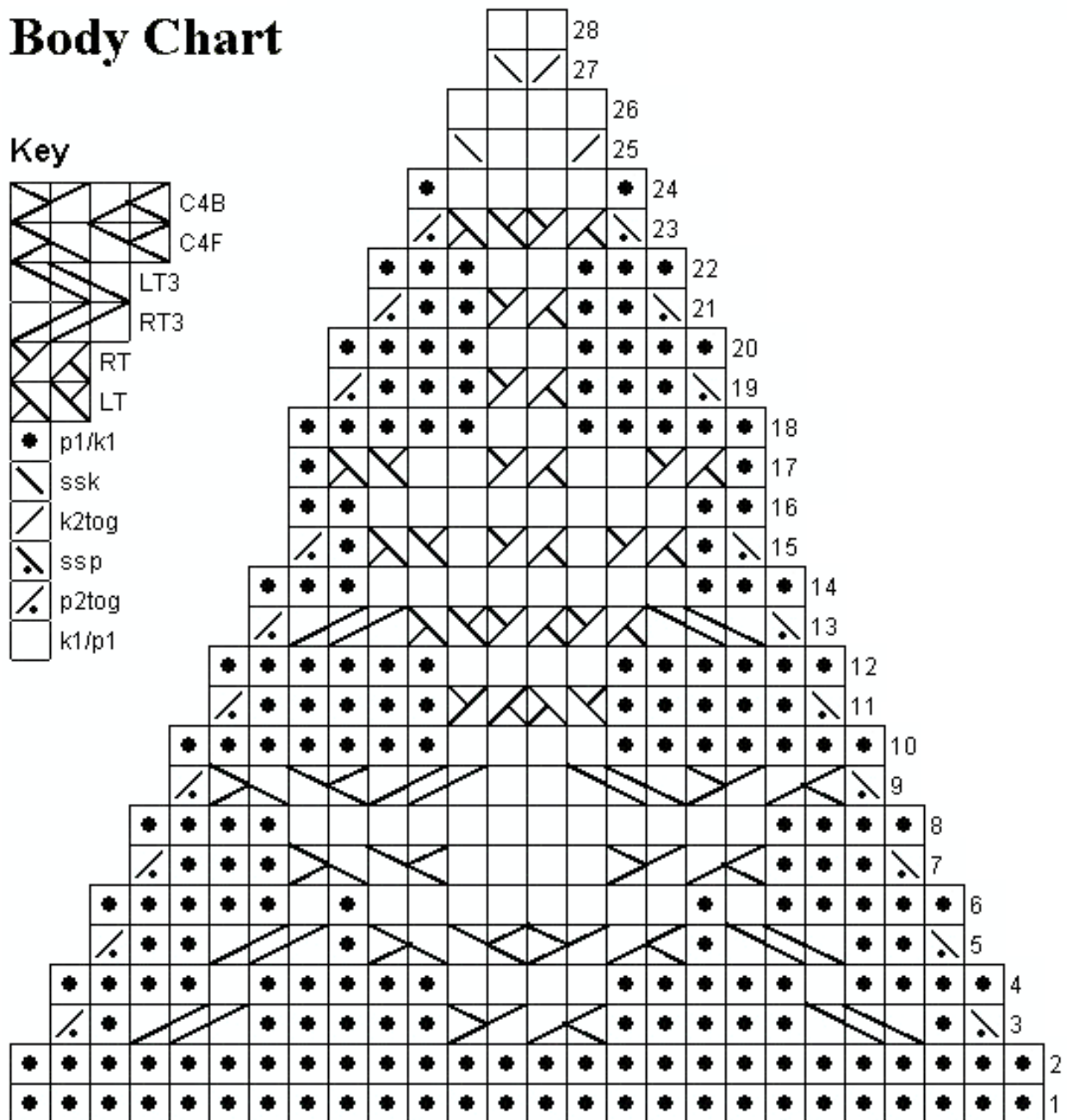
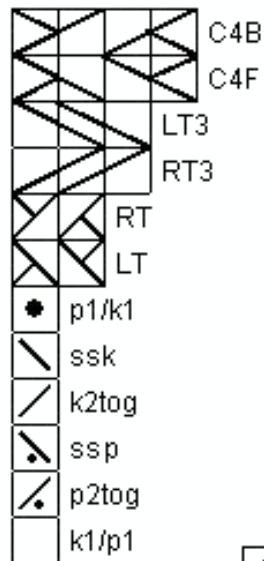
[without cable needle] Slip 2 stitches together knitwise. Return them to the left needle in their new order and knit each of them through the back loop separately

LT – [with cable needle] Slip 1 stitch onto the cable needle (cn) and hold to the front of the work, knit 1, knit 1 from the cn

[without cable needle] Slip 2 stitches knitwise, one at a time. Insert the left needle into the slipped stitches from right to left and slip them off the right needle. Knit each stitch separately.

Body Chart

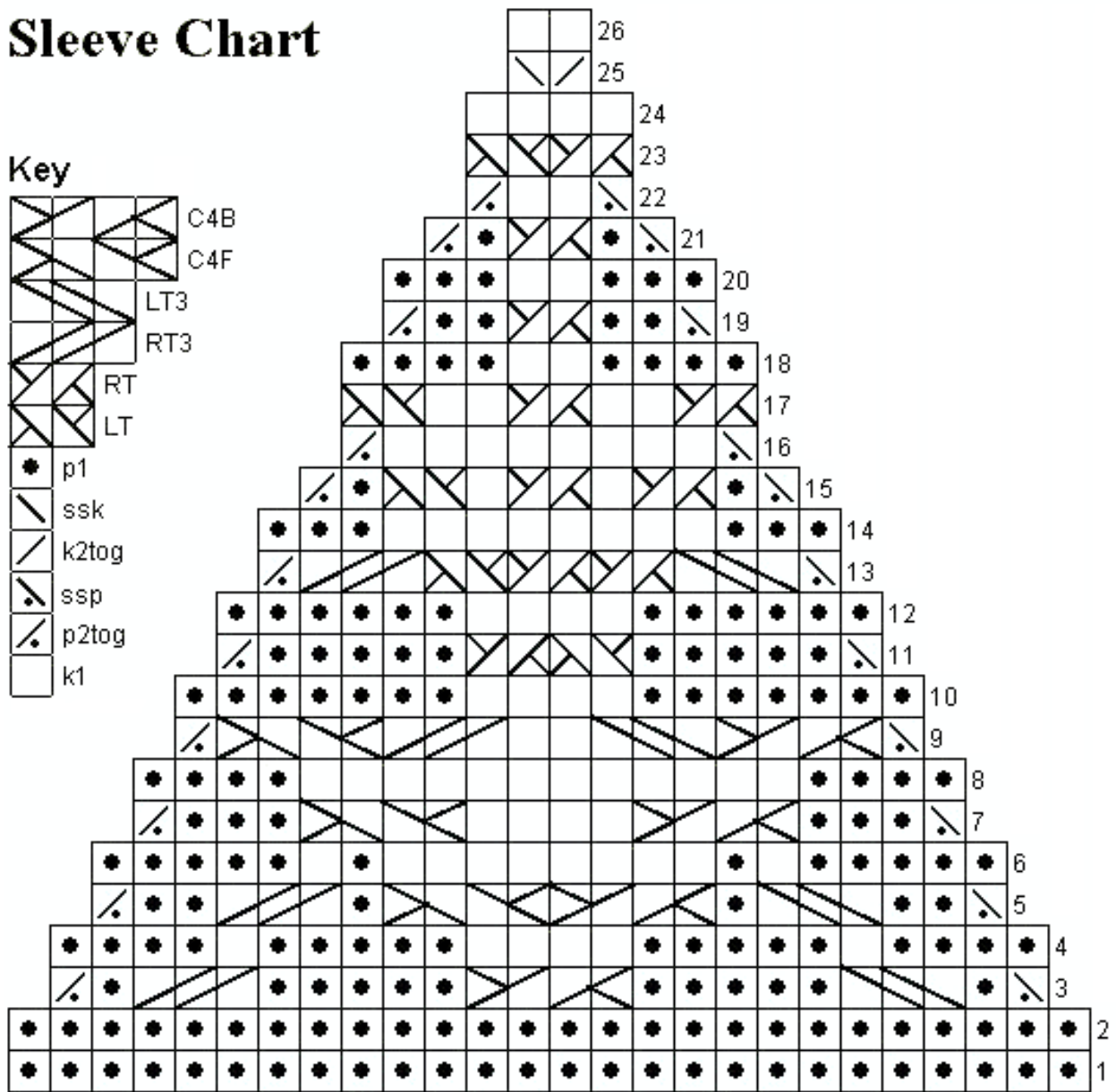
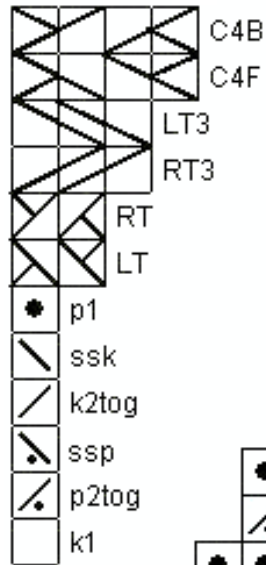
Key



Based on the Berocco Snowflake

Sleeve Chart

Key



Based on the Berocco Snowflake