



I remember Mrs. Falsone, the 4th grade teacher who stood at the board in front of the classroom and wrote in her flawless handwriting, demonstrating proper letter formation. The Penmanship Cowl evokes the perfect curlicues of her cursive writing, complete with the dots to show you where to begin and end

Penmanship Cowl

by Joan Forgione

PENMANSHIP COWL is a sophisticated and elegant lace-and-cable cowl. It's a quick and interesting knit for those brisk evenings out on the town or under a conservative coat on your chilly commute to the office.

Suitable for
ADVENTUROUS BEGINNER

SKILLS USED

- Knitting in the round
- Cabling
- Decreasing
- Working from a chart

YARN

2 skeins Blue Sky Alpacas Sport Weight [100% baby alpaca] – 110 yds /50g skein – color 539 (Capri)

OR

165 yards sport weight yarn

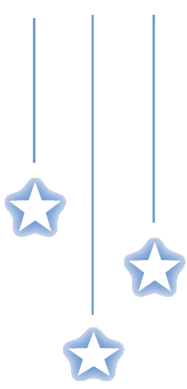
NEEDLES & NOTIONS

- Size 5 (3.75mm) circular needle, 16" long
OR SIZE TO OBTAIN GAUGE
- stitch marker
- tapestry needle



Copyright ©2012 Joan Forgione

This pattern, including text and images, is an original Paper Moon Knits design and may not be reprinted, reproduced, distributed or sold without the express permission of the author.



FINISHED MEASUREMENTS

Circumference = 18" (unstretched)

Length = 6"

GAUGE

34 sts and 37 rows = 4"/10 cm over Lace and Cable (Chart B)

COWL

Cast on 156 sts. Join to work in round. Place marker for beg of round. Work Chart A two times.

Work Chart B once. Then work Chart C once.

Repeat * to *. Then work Chart B once more.

Work Chart A two times. [56 rows total]

Bind off all sts loosely. Weave in loose ends.

Chart Key

-			
○			
∕			
∖			
⎓			
⎓			

knit

purl

yarn-over

k2tog (knit 2 together)

ssk (slip, slip, knit)

**Right Cross (RC)

[slip 2 sts to cable needle, hold at back of work, knit 2, knit 2 from cable needle]

PATTERN STITCHES

Chart A—Cabled Rib (multiple of 13 sts)

RNDS 1, 2 and 4 – *P2, k2, p1, k2, p2, k4; rep from *.

RND 3 – *P2, k2, p1, k2, p2, Right Cross (RC)++; rep from *.

				-	-			-			-	-	4
		∕		-	-			-			-	-	3
				-	-			-			-	-	2
				-	-			-			-	-	1
13	12	11	10	9	8	7	6	5	4	3	2	1	

Chart B—Lace & Cable (multiple of 13 sts)

RND 1 – *P2, k2tog, yo, k3, p2, k4; rep from *.

RND 2 and all even rounds – *P2, k5, p2, k4; rep from *.

RND 3 – *P2, k2, yo, ssk, k1, p2, RC; rep from *.

RND 5 – *P2, k3, yo, ssk, p2, k4; rep from *.

RND 7 – *P2, k1, k2tog, yo, k2, p2, RC; rep from *.

				-	-					-	-	8	
		∕		-	-			○	∕		-	7	
				-	-					-	-	6	
				-	-	∖	○			-	-	5	
				-	-					-	-	4	
		∕		-	-			∖	○		-	3	
				-	-					-	-	2	
				-	-				○	∕	-	1	
13	12	11	10	9	8	7	6	5	4	3	2	1	

Chart C—Lace (multiple of 13 sts)

RND 1 – *P2, k2tog, yo, k3, p2, k4; rep from *.

RND 2 and all even rounds – *P2, k5, p2, k4; rep from *.

RND 3 – *P2, k2, yo, ssk, k1, p2, k4; rep from *.

RND 5 – *P2, k3, yo, ssk, p2, k4; rep from *.

RND 7 – *P2, k1, k2tog, yo, k2, p2, k4; rep from *.

				-	-					-	-	8	
				-	-			○	∕		-	7	
				-	-					-	-	6	
				-	-	∖	○			-	-	5	
				-	-					-	-	4	
				-	-			∖	○		-	3	
				-	-					-	-	2	
				-	-				○	∕	-	1	
13	12	11	10	9	8	7	6	5	4	3	2	1	

ABBREVIATIONS

beg	begin(ning)
rnd(s)	round(s)
sts	stitches