



kidney pie

designed by joan forgione

*Copyright ©2015 Joan Forgione ~ version 2
This pattern, including text and images, is an original Paper Moon Knits design and may not be reprinted, reproduced,
distributed or sold without the express permission of the author.*

kidney pie cap

joan forgione

Kidney Pie is a close-fitting, lace and cable cap. The stretchy ribbing branches off into a simple motif that flows to the top of the cap. Its name comes from my grandpa who was fond of telling us to “use our kidneys” whenever we needed to have our wits about us.

FINISHED MEASUREMENTS

- Head circumference: 20 – 22” [50.8 – 55.9cm] (stretched)

YARN

2 balls *Tahki Yarns Torino Bulky*

100% extra fine Merino wool

55 yds [51m]/50g

Shown in color Pastel Yellow (232)

or

- 90 yds [83m] bulky yarn

NEEDLES

- US 9 [5.5mm] needles*
- US 10.5 [6.5mm] needles*
or size to obtain gauge

**Double-pointed, 32” [80cm] circulars or two shorter circulars, as preferred, to work in the round.*

NOTIONS

- stitch marker (1)
- tapestry needle

GAUGE

- 21 sts and 21 rows = 4” [10cm] in lace chart using US 10.5 [6.5mm] needles (unblocked)

SKILLS USED

- knitting in the round
- cables
- lace
- increasing
- decreasing

NOTES & TIPS

1. The cap is worked from the bottom up, in the round.
2. Directions are given as line-by-line or in chart form.

ABBREVIATIONS

BOR	beginning of round
dec	decrease
k	knit
k2tog	knit 2 sts together
ktbl	knit through the back loop
p	purl
p2tog	purl 2 sts together
RC	right cross
rem	remain(ing)
rep	repeat
rnd(s)	round(s)
sl	slip
sk2pssso	slip 1 st, k2tog, pass slipped st over
sm	slip marker
ssk	slip 1 st as if to knit, slip 1 st as if to, knit these 2 slipped sts together
st(s)	stitch(es)
yo	yarn over

PATTERN STITCHES

Ribbing (multiple of 10 sts)

Every rnd: *P2, ktbl, p2, ktbl, p2, k2,; rep from * to end of rnd.

Lace (multiple of 10 sts)

RND 1: *P2, k4, p2, k2tog, yo; rep from * to end of rnd.

RND 2 and all even rnds: *P2, k4, p2, k2; rep from * to end of rnd.

RND 3: *P2, RC, p2, yo, ssk; rep from * to end of rnd.

RND 5: Rep RND 1.

RND 7: *P2, k4, p2, yo, ssk; rep from * to end of rnd.

Rep RND 1 – 8.

Right Cross (RC)

Sl 2 sts to cable needle and hold to back, k2, then k2 from cable needle.



cap

With smaller needles, cast on 80 sts. Place BOR marker and join to work in round. Work ribbing for 2" [5cm].

Change to larger needles and work RND 1 – 8 of lace twice. Then work RND 1 – 2 of lace once more.

Top of cap shaping

Next rnd (dec): *P2tog, RC, p2tog, yo, ssk; rep from * to end of rnd. [64 sts rem]

Next rnd (dec): *P1, k2tog, ssk, p1, k2; rep from * to end of rnd. [48 sts rem]

Next rnd (dec): *K2tog, ssk, k2tog, yo; rep from * to end of rnd. [32 sts rem].

Next rnd (dec): *K2tog, k2; rep from * to end of rnd. [24 sts rem].

Next rnd (dec): *Yo, sk2psso; rep from * to end of rnd. [16 sts rem]

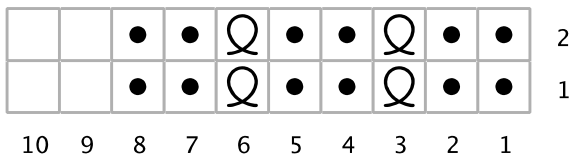
Next rnd (dec): *K2tog; rep from * to end of rnd. [8 sts rem]

FINISHING

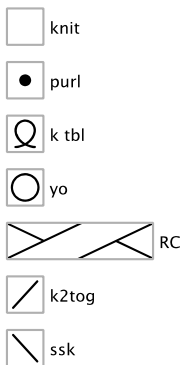
Cut a 6" tail and thread through a tapestry needle. Pull tail through rem 8 sts, pull tightly and secure to inside. Weave in all ends. Block lightly to finished measurements.

KIDNEY PIE Charts

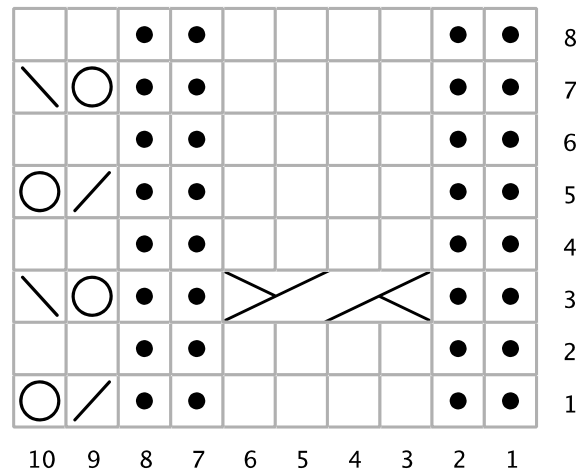
Ribbing Chart



Key



Lace Chart



Find me online:

www.papermoonknits.com

papermoonknits@gmail.com

www.ravelry.com/designers/joan-forgione