

# π Mitts

by: Rabbit Zielke

## Materials:

- Knitting needles size 6 (4.25 mm)
- One skein worsted weight yarn in primary color
- One skein worsted weight yarn in contrast color
- Darning needle

## Gauge:

5 sts x 6 rows = 1"

## Abbreviations:

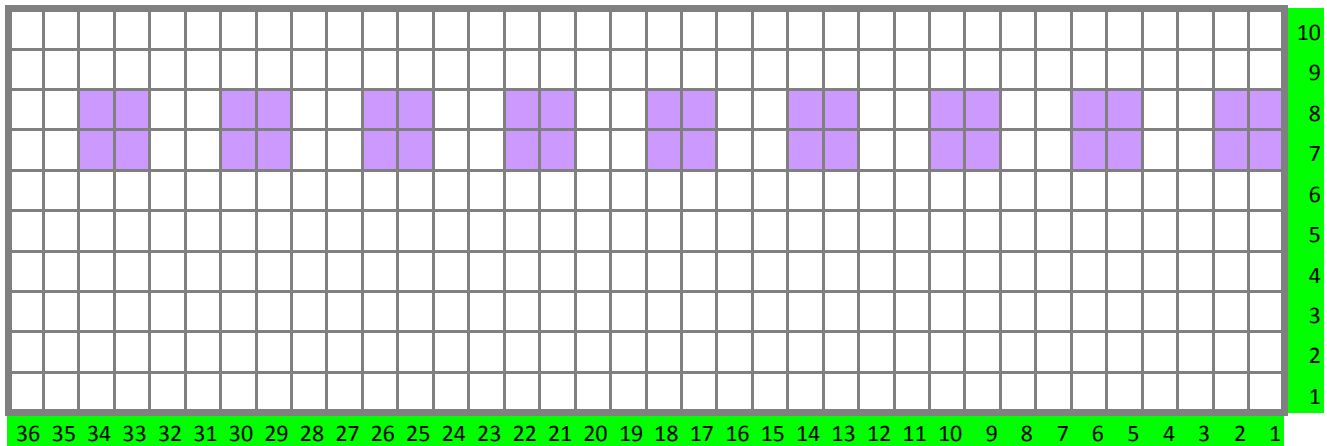
- K = Knit
- P = purl
- = Contrast color

These mitts make the perfect gift for your favorite math teacher or just to show you are in the know on Pi Day.



## Cuff:

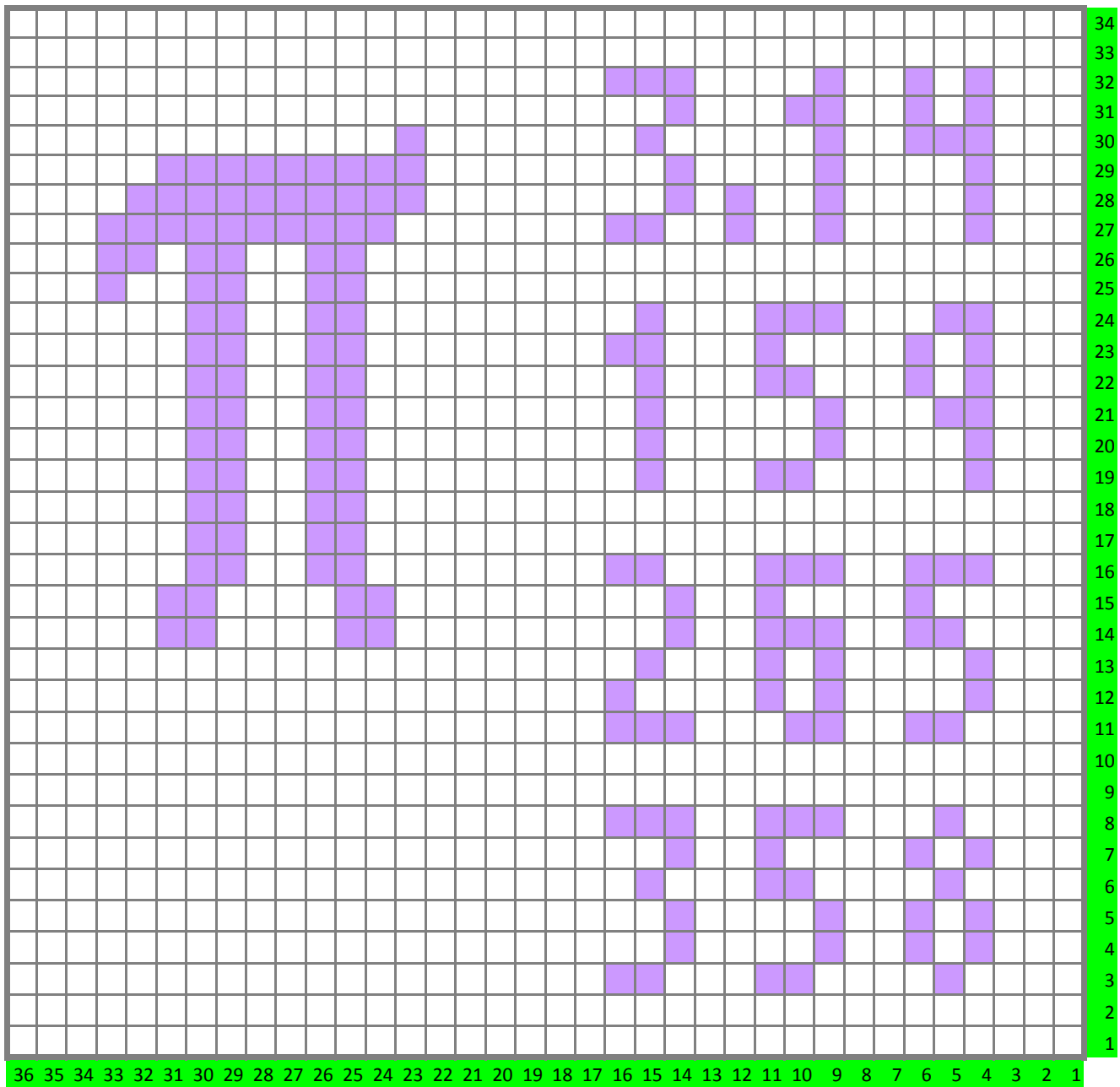
- Using the long tail cast on method, cast on 36 stitches.
- Knit in 2x2 ribbing for 6 rows. (K2 P2)
- Continue with 2X2 ribbing but add contrast color for rows 7 and 8.
- Return to 2x2 ribbing in just primary color.



## Mitt:

Knit in stockinette following charts for primary and contrast colors.





Right Hand Chart

**Variations:**

For larger mitts cast on more stitches as needed. Set additional stitches between the Pi symbol and the numbers.

Shorten the mitts by omitting the last 3 digits of Pi (rows 1 through 8).

Wear them on opposite hands to move the Pi symbol to the palm leaving the digits of Pi on the top of your hand.

**Celebrate  $\pi$  Day on March 14th!**