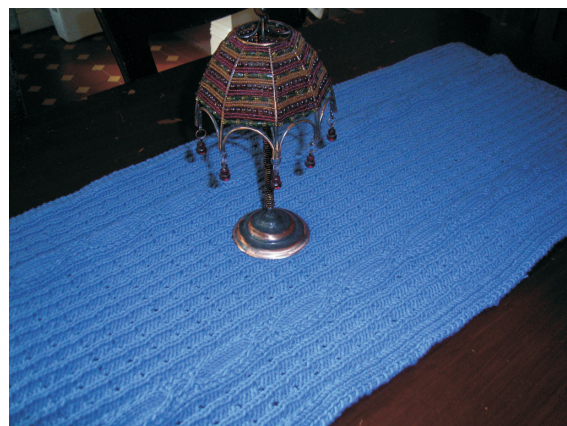


CUTE CABLED TABLE RUNNER

A casual table runner to add a bit of style to your dining table.

The stitch patterns come from volume three of a 1980's English knitting series called Creative Knitting. No details of the publisher are available in this edition.



MATERIALS

Patons (Australia) Washed Haze Aran, 50g balls, each approx 85m(93 yds) (60% cotton, 40% acrylic) or any other Aran weight yarn

- 10 balls
- One pair size 4.5mm needles or size to obtain gauge
- Two cable needles

MEASUREMENTS

43cm(17 in) x 117cm(46 in) approx

GAUGE

20.5 sts and 26 rows to 10cm(4 ins) over Fancy Rib stitch using 4.5mm needles

STANDARD ABBREVIATIONS

yrn yarn round needle
ytf yarn to front

SPECIAL ABBREVIATIONS

Cr5 slip 1 st onto first cable needle, hold to front, slip 3 sts onto second cable needle, hold to back, k1, k3 from second cable needle, k1 from first cable needle (Note: a cable needle with one stitch slips out easily. Put one end of needle through work to keep stable)

PATTERN STITCHES

Fancy Rib

Row 1:*K1, p3; rep from * to end.
Row 2:*K3, p1; rep from * to end.
Rows 3 & 4:As rows 1 and 2
Row 5:*K1, p2tog, yrn, p1; rep from * to end.
Row 6:As row 2

TABLE RUNNER

With 4.5mm needles, cast on 85sts.

Work K1, p1 rib for 6 rows, increasing 14 sts evenly over middle 73 sts of last row. 99 sts.

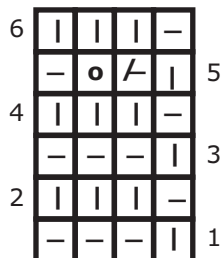
Begin pattern

Work K1, p1 rib across first 5 and last 5 sts of every row.

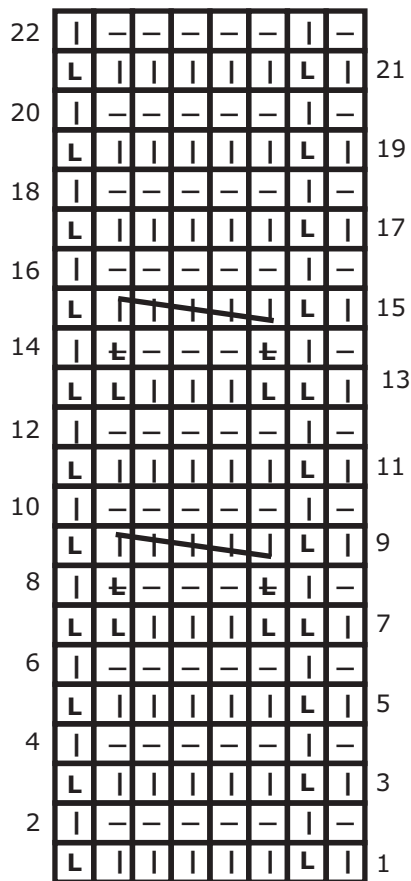
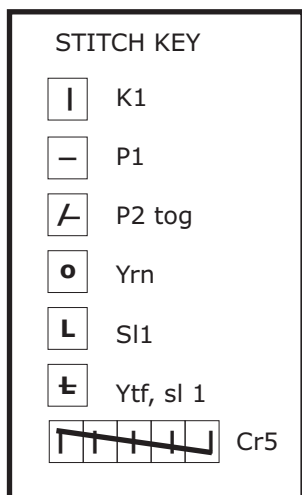
Across remaining 89 sts, work Fancy Rib over 16 sts, Crossed Cables over 8 sts, Fancy Rib over 40 sts, Crossed Cables over 8 sts, Fancy rib over 16 sts, (rs)k1 (ws p1).

Continue in pattern as established until piece measures approx 114.5cm ending with row 22 of Crossed Cables and row 4 of Fancy Rib (13 repeats of Crossed Cables)
 Work 1 row K1, p1 rib, decreasing 14 sts evenly over middle 87 sts. - 85 sts.
 Work a further 5 rows of K1, p1 rib.
 Cast/bind off loosely in rib.

Block lightly to measurements.



Fancy Rib Chart



Crossed Cables Chart

