

Inga Hat



Yarn and needles:

One size fits all.

Knit Picks Merino Style, 100% Merino wool, 123 yards/50 g ball, 1 ball in each of the following colors:

Main Color (MC): Coal #23456, Contrast Color #1 (CC1): Nutmeg #23460, Contrast Color #2 (CC2): Hollyberry, or colors of your choice in DK or heavier sport weight.

Needles: size 3(US) 16" length circular needle, size 5(US) 16" length circular, and size 5(US) double-pointed needles, or sizes to get gauge. A yarn needle (large-eyed needle) is needed to finish the hat.

Gauge:

With size 5 needles and in colorwork, 24 sts to 4 inches

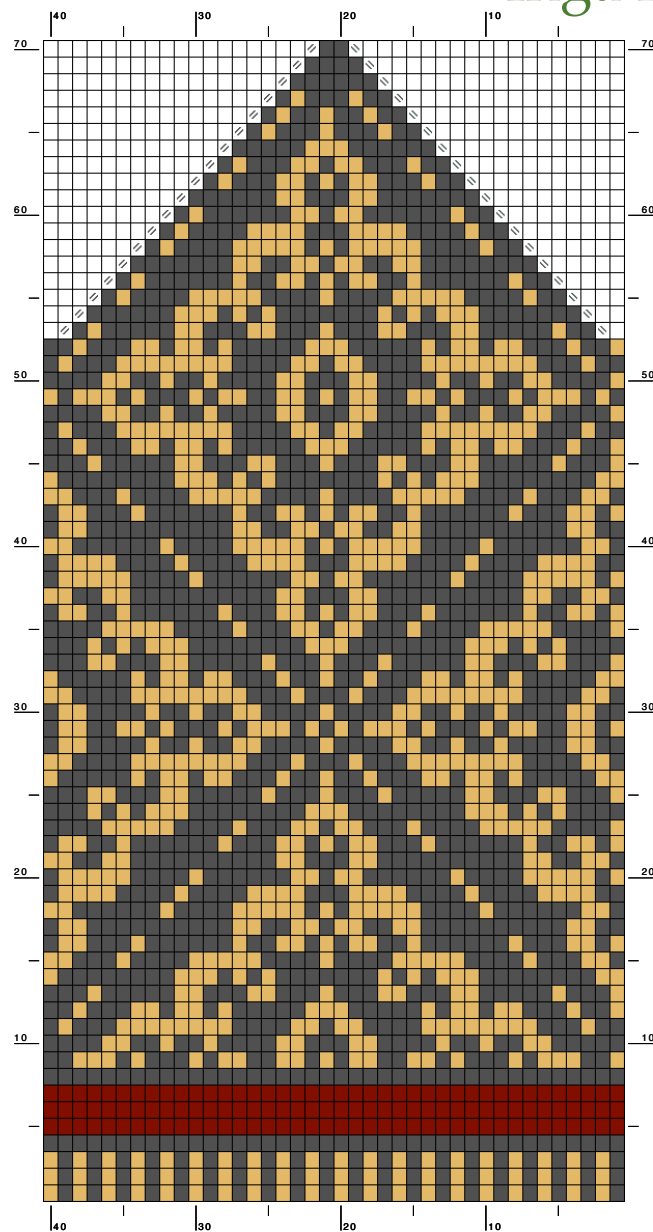
Directions:

With smaller circular needle and CC1, CO 120 sts. Join for circular knitting being careful not to twist CO row, and begin chart. You will repeat the chart 3 times per row. Rows 1 through 3 of chart are a knitted on braid (see directions under "abbreviations and stitches used" on next page. Switch to larger circular needle after Row 8. Once decreases have been started, change to double-pointed needles when circumference of hat becomes too small for circular needles.

After last row of chart is knit, cut an 8" yarn tail and thread through yarn needle. Pull tail through remaining stitches, then secure. Weave in all ends and block (you can change the size some by blocking if needed).

Note: I changed the pattern slightly after knitting the sample hat, so chart directions are a bit different from picture above...follow the chart.

Inga Hat



		No Stitch
		knit in CC2
		knit in CC1
		knit in MC
		slip, slip, knit
		knit 2 tog

Abbreviations and stitches used:

k= knit, p= purl

st(s)= stitch(es)

CO=cast on

BO= bind off

MC= main color

CC= contrast color

ssk= slip each of next 2 sts separately as if to
knit, then k them together

k2tog= knit next 2 sts together as one

Braid (worked over rows 1, 2, and 3 of
chart):

Row 1: k 1 in MC, k 1 in CC1

Row 2: bring yarns to front of work, *p 1 in
MC, cross strand of CC1 over strand just
worked, p 1 in CC1, cross MC over CC* ;
Repeat from * to * across row.

Row 3: Starting with MC, work as for Row
2, but cross strand just worked UNDER
strand to be worked.