



Beaded Evening Purse

by Silka Burgoyne

Degree of Difficulty: Advance Beginner

MATERIALS

[MC] Worsted Weight yarn – 150 yards

[CC] Worsted Weight yarn – 80 yards

[CC2] Novelty yarns – choose one that is shiny and matches the CC color – 50 yards

The purse shown is knit in Ella Rae Classic in colors Black and Cherry.

1 set US #8/5.00 mm double-point needles

A pair of size US 11/6.50 mm needles

Notions required:

- Tapestry Needle
- One 7" zipper (Red)
- Fabric
- Sewing needle and thread

- Beading wire and beads in various colors and sizes

GAUGE

14 sts/16 rows = 4" in stockinette stitch using size 11 needle

FINISHED MEASUREMENTS

Approximated Size after Felting: 8 inches W * 5.5 inches H

PATTERN NOTES

This purse is knit in one piece using one strand of yarn in St st. When working in CC and CC2 combined, work in rev St st. This purse edging is knit in attached I-cord. The handle of the purse is hand beaded.

Key:

St st	Stockinette Stitch – Knit on RS, Purl on WS
Rev St st	Reverse Stockinette Stitch – Purl on RS, Knit on WS
Dec(rease)	K1, ssk, K to last 3 sts, k2tog, K1
Inc(rease)	K1, M1, K to last 1 sts, M1, K1
ssk	Slip, Slip, knit
k2tog	Knit 2 together
pssso	Knit 1, k2tog, pass 1 st sts over 2 nd sts
YO	Yarn over

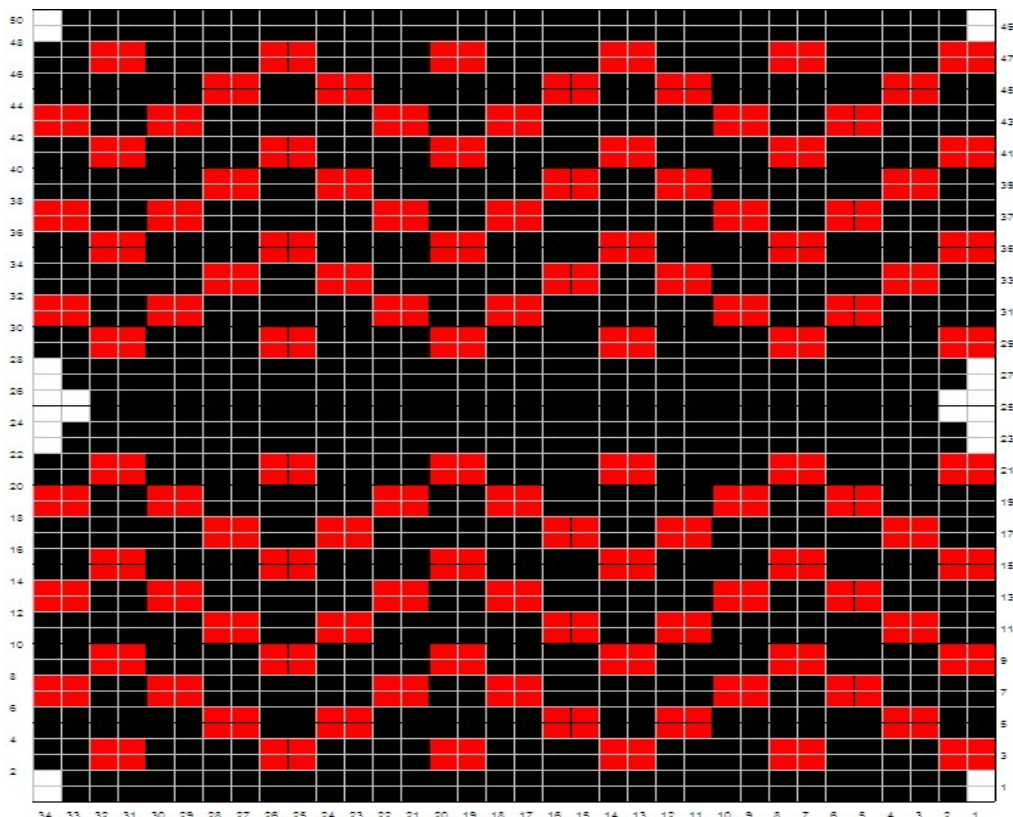
Attached I-cord:

Use dpn, cast on 3 sts.

Row 1: pick 1 st from the edge of the purse, ssk, k2, slip the sts to the knitting position. Repeat row 1 until the edging is completed.

PATTERN

Follow the chart below to work the color pattern and the inc and dec.



FINISHING

Weave in all ends and block the main piece. Fold the piece in half, with RS facing out, work the edging as following: Start on one side of the purse, then the bottom, and finish with the other side of the purse. The top edge of each side is worked separately.

Once the edging is completed, felt the purse using lowest level of water, and hot water cycle (hot/cold cycle for front loading machine), put the purse into a zippered pillow case or a mesh laundry bag, with a pair of old jeans and some wool wash. Check the progress frequently to prevent too much felting. Once the purse is felted to the desired size, remove it, and gently squeeze it using a bath towel. Shape the purse while it is still wet.

Option:

Once the purse is completely dry, lined the purse and made a beaded handle and attached to the purse. Other option for the handle: purchase a silver chain or beaded necklace.