

## Miss Marple Socks by Star Athena



- Size Women's Medium, Large
- Foot circumference:
  - 7 (9) inches (17.5, 23 cm)
  - unstretched. Will stretch to fit
  - 9 (11) inches (23, 28 cm).
- Gauge: 32 sts/48 rows = 4" in st st
- Needles: 1 set US #1/2.25mm 32" circular needles or double pointed needles, or size to get gauge.

Yarn: Any fingering weight yarn that gives you proper gauge) You will need two contrasting colors. You will need more yarn in the MC than the CC. You'll need at least MC: 75-100g (300-400 yd) CC: 25-40g (120-175 yd). The lower numbers are for a medium foot and the larger numbers are for a large foot. The length of your foot will impact the amount of yarn you need.

This sock was originally designed as a mystery, with the pattern divided into clues. The mystery design was inspired by Miss Jane Marple, the fictional crime-solver created by Agatha Christie. She's sharp, clever, and a knitter, of course. Now the pattern is complete and ready to knit as a whole... the only mystery left is to unlock the crossword puzzle at the end!

NOTES: This pattern is worked from the cuff down with two colors. It includes mosaic knitting, lace, a heel flap, and a grafted toe. The slipped stitches create a fabric that is slightly less stretchy than standard stockinette st. Keep this in mind when choosing yarn and sock size.



Miss Marple  
Socks

What is mosaic knitting? Describing mosaic knitting is harder than actually doing it. Barbara Walker named the process of slipping stitches while alternating rows of color “mosaic knitting” because it naturally lends itself to geometric design. Unlike stranded knitting, you only work with one color at a time. You will slip stitches to give the illusion of colorwork. In this pattern, you will work 2 rows of one color across the round, slipping the stitches that are indicated as the second color, then work 2 rows of the other color, slipping the other stitches. In the charts, The MC is represented with white and the CC is shaded.

This pattern is written using the magic loop or 2-circular method, where half the stitches are on N1, and the other half are on N2. You can easily divide these stitches again for double pointed needles.

#### ABBREVIATIONS:

CC: Contrast color

CO: Cast on

K: Knit

K2tog: Knit two stitches together as one stitch

MC: Main color

P: Purl

P2tog: Purl two stitches together as one stitch

RS: Right (or public) side of work

Sl: Slip. As in, slip the next stitch from left to right purl-wise.

SSK: Slip one stitch as if to knit, slip the next stitch as if to knit, insert left needle into front of these two stitches and knit them together.

St: stitch

Tbl: Through back loop

WS: Wrong (or non-public) side of work

YO: Yarn over

## Start Sock:

### Cuff:

With CC CO 64 (72) sts. Divide evenly between needles and join to begin working in the round, being careful not to twist sts when joining.

Rnd 1: Purl.

Rnd 2: Knit.

Rnd 3: Purl.

Rnd 4: Join MC and knit across round. (Yes, just one round!)

Size Medium: Next rnd: Pick up CC and start cuff chart.

Size Large: Next rnd: Pick up CC and start cuff chart starting on the 5<sup>th</sup> st. Work all subsequent rnds of the cuff chart in this way, starting with the 5<sup>th</sup> st. This will align the motif properly over the leg.

Both sizes: Remember, you are working with one color at a time, slipping the stitches of the other color where indicated.

Work rnds 1-24 of cuff chart. Proceed to leg.

### Miss Marple Cuff Chart

8	7	6	5	4	3	2	1	
●	●	●	●	●	●	●	●	24
								23
V	●	●	●	●	●	●	●	22
V								21
●	V	●	●	●	●	●	V	20
	V						V	19
●	●	V	●	●	●	V	●	18
		V				V		17
●	V		●	●	●	V	●	16
	V						V	15
V	●	●	●	●	●	●	●	14
V								13
●	●	●	●	●	●	●	●	12
								11
●	●	●	●	V	●	●	●	10
			V					9
●	●	●	V	●	V	●	●	8
			V		V			7
●	●	V	●	●	●	V	●	6
		V				V		5
●	●	●	V	●	V	●	●	4
			V		V			3
●	●	●	●	V	●	●	●	2
			V					1

#### Legend:

□ knit  
 knit stitch

V slip  
 Slip stitch as if to purl, holding  
 yarn in back

● purl  
 purl stitch

#### Notes:

MC = White  
 CC = Shaded

#### Pattern:

R1 (RS): k3, sl, k4  
 R2: p3, sl, p4  
 R3: k2, sl, k1, sl, k3  
 R4: p2, sl, p1, sl, p3  
 R5: k1, sl, k3, sl, k2  
 R6: p1, sl, p3, sl, p2  
 R7: k2, sl, k1, sl, k3  
 R8: p2, sl, p1, sl, p3  
 R9: k3, sl, k4  
 R10: p3, sl, p4  
 R11: k8  
 R12: p8  
 R13: k7, sl  
 R14: p7, sl  
 R15: sl, k5, sl, k1  
 R16: sl, p5, sl, p1  
 R17: k1, sl, k3, sl, k2  
 R18: p1, sl, p3, sl, p2  
 R19: sl, k5, sl, k1  
 R20: sl, p5, sl, p1  
 R21: k7, sl  
 R22: p7, sl  
 R23: k8  
 R24: p8

### Leg:

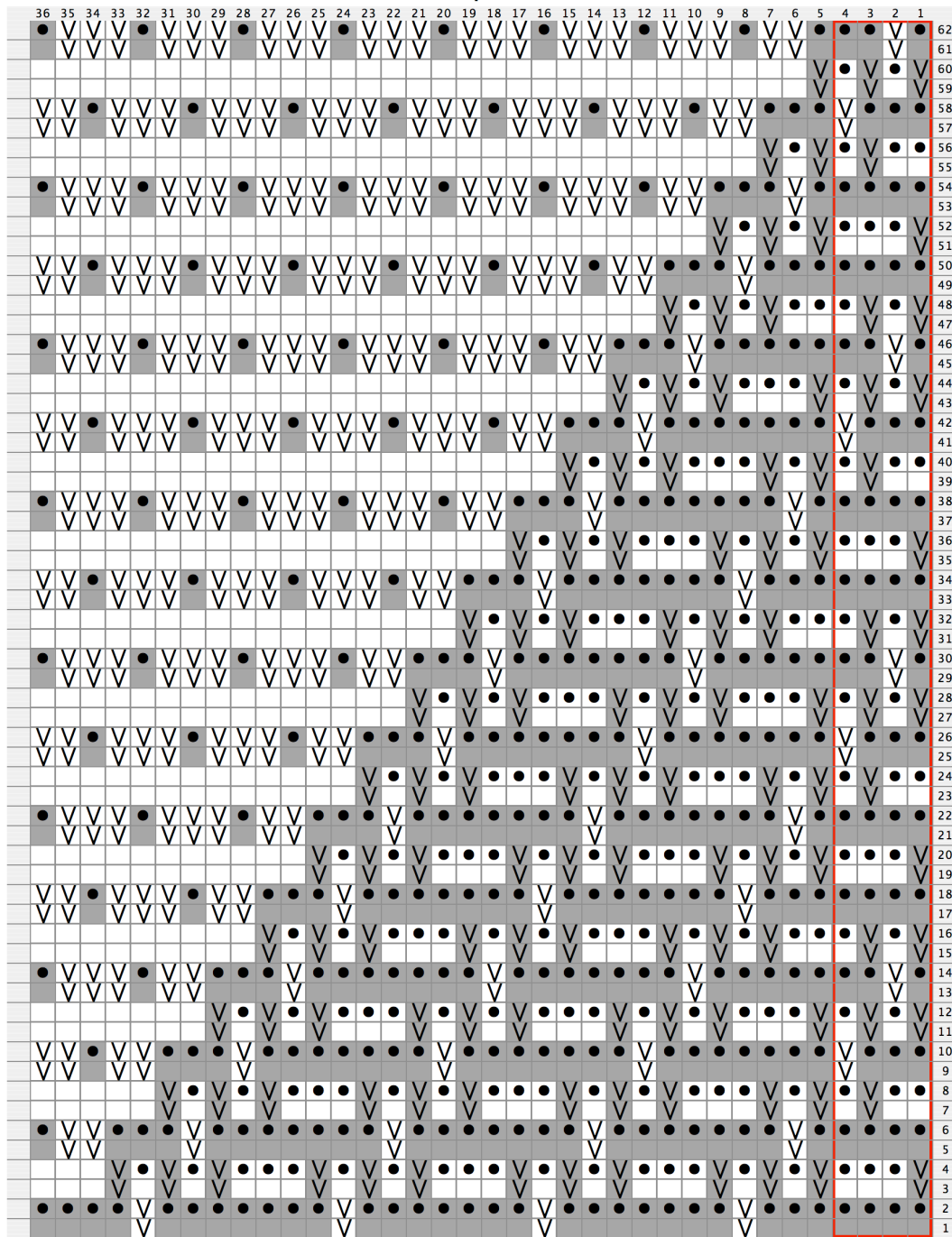
Both sizes: Please read the instructions regarding the outlined sections in the chart notes.  
 Next rnd: Work rnd 1 of leg chart A across half of your stitches, then rnd 1 of leg chart B across the second half. This completes the first rnd.  
 Continue Leg Chart A and B until you have worked all 62 rnds. Medium size: break CC. Large size: Work rnds 1-8 of Chart C. Break CC.





## Miss Marple Socks

Miss Marple Chart A



### Legend:

- ☐ knit  
knit stitch
- ☒ slip  
Slip stitch as if to purl, holding yarn in back
- ☒ purl  
purl stitch

### Notes:

Size Large: Start chart at the 1st st. Work outlined section, then the rest of the rnd.

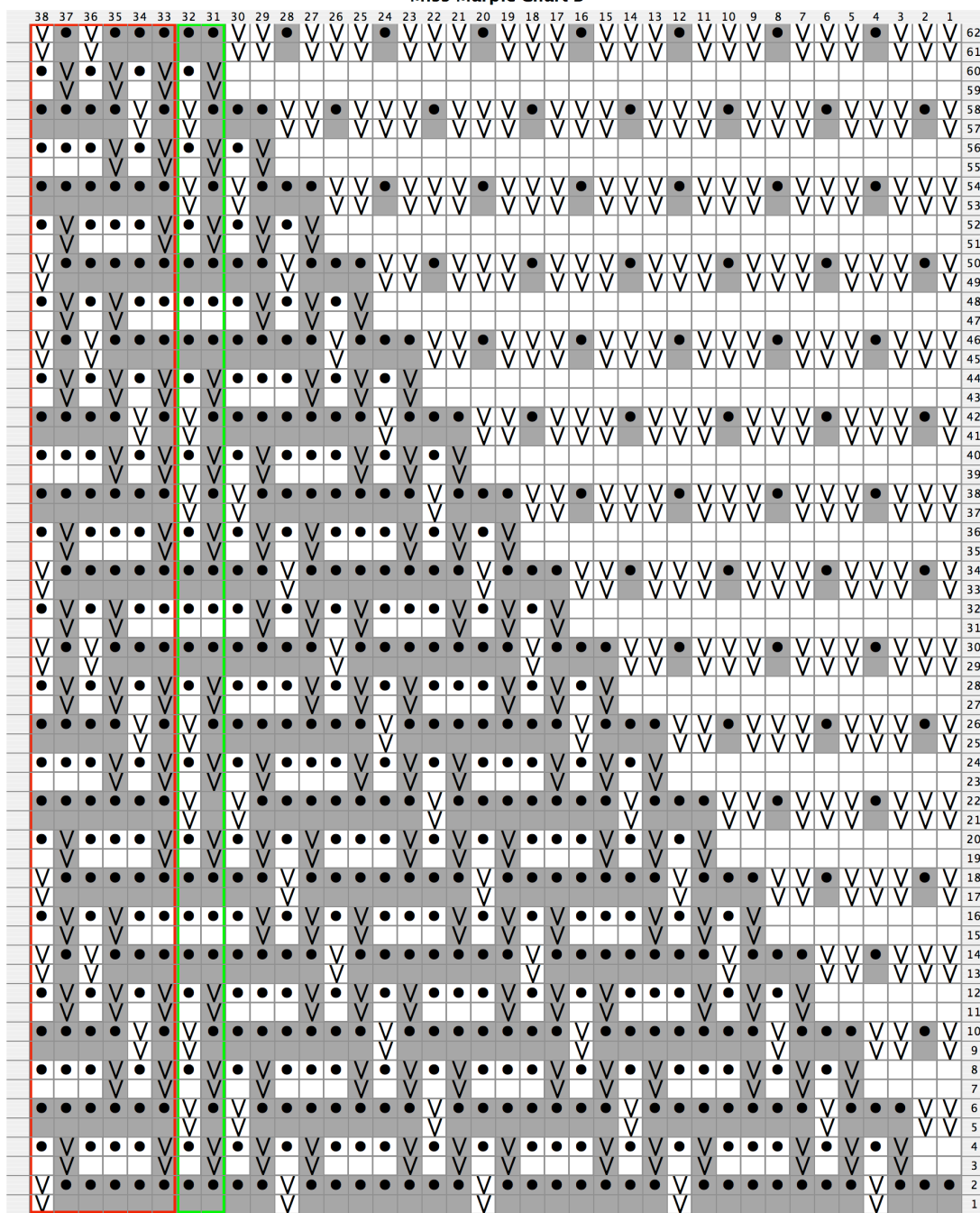
Size Medium: Start chart at the 5th st. Skip the outlined section entirely.





## Miss Marple Socks

Miss Marple Chart B



### Legend:

☐ knit  
knit stitch

☒ slip  
Slip stitch as if to purl, holding yarn in back

☒ purl  
purl stitch

### Notes:

Size Medium: Work the 1st 32 sts. Stop rnd after working the green outlined section. Do not work red outlined section.

Size Large: Do not work the green outlined section. Work until the 30th st, then work the red outlined section.

Both sizes: You may find it helpful to mark/cut/color the chart to ensure you follow the proper instructions.

☒ **slip**  
Slip stitch as if to purl, holding yarn in back

---

☐ **knit**  
knit stitch

---

☒ **purl**  
purl stitch

Work first three sts, repeat red outlined section until last five sts, work last five sts.

	4	3	2	1	
					4
	○	↘			3
					2
		↗	○		1

	<b>knit</b> knit stitch
	<b>yo</b> Yarn Over
	<b>k2tog</b> Knit two stitches together as one stitch
	<b>ssk</b> Slip one stitch as if to knit, Slip another knit. Insert left-hand needle into front stitches and knit them together

Start Jane's Lace pattern. Work rnds 1-4, then proceed to heel. To make a longer leg, repeat Jane's Lace pattern until you are ready to work the heel, ending after working rnd 4. Try on the sock to ensure fit!

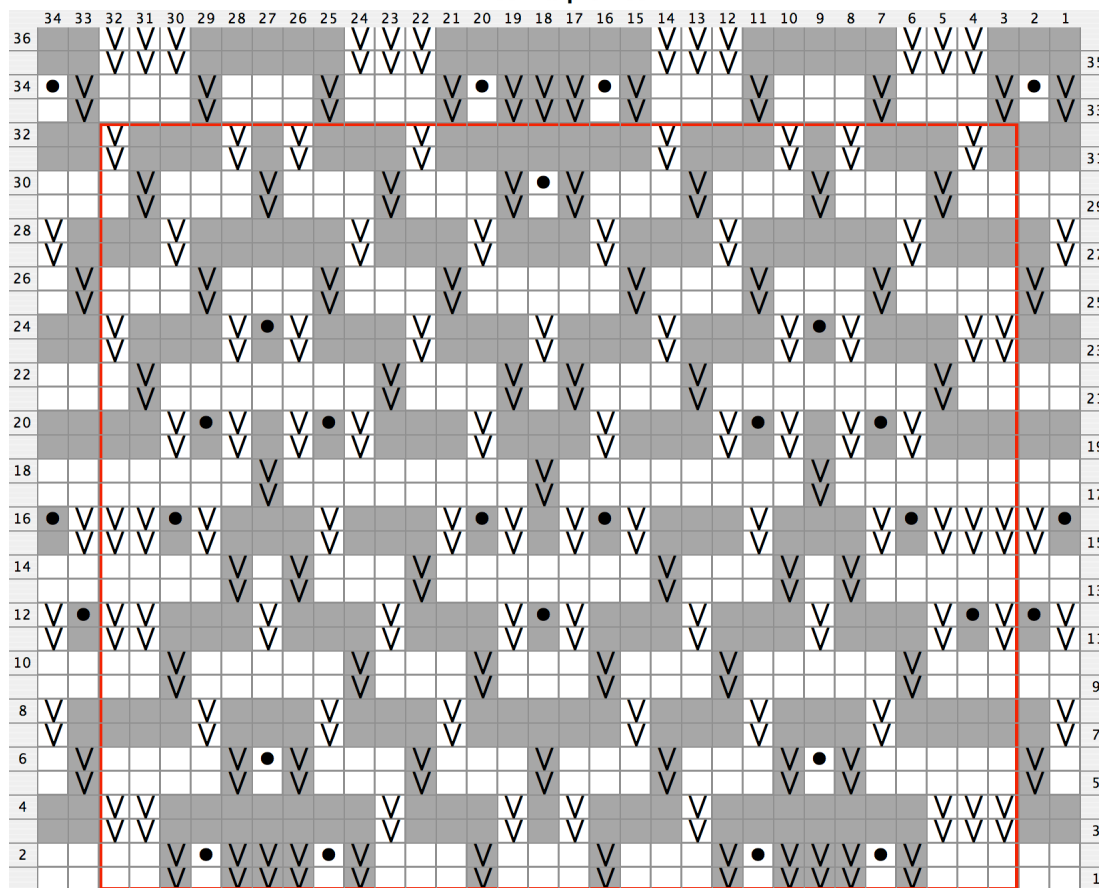
Next row: Join CC and p32 (36). Proceed to heel flap.

After working row 32 (36), break CC and proceed to the heel turn instructions.



## Miss Marple Socks

### Miss Marple Heel



#### Legend:

**knit**  
☐ RS: knit stitch  
 WS: purl stitch

**slip**  
☒ RS: Slip stitch as if to purl, holding yarn in back  
 WS: Slip stitch as if to purl, holding yarn in front

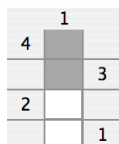
**purl**  
☒ RS: purl stitch  
 WS: knit stitch

#### Notes:

Medium Size: Only work the chart within the red outlined section.

Large Size: Work entire chart, including sts inside and outside red outlined section.

### Miss Marple Heel Edge



#### Legend:

**knit**  
☐ RS: knit stitch  
 WS: purl stitch



Miss Marple  
Socks

### Turn Heel:

Row 1: [RS] k17 (19), ssk, k1, turn.  
Row 2: [WS] Sl1, p5, p2tog, p1, turn.  
Row 3: [RS] Sl1, k6, ssk, k1, turn.  
Row 4: [WS] Sl1, p7, p2tog, p1, turn.  
Row 5: [RS] Sl1, k8, ssk, k1, turn.  
Row 6: [WS] Sl1, p9, p2tog, p1, turn.  
Row 7: [RS] Sl1, k10, ssk, k1, turn.  
Row 8: [WS] Sl1, p11, p2tog, p1, turn.  
Row 9: [RS] Sl1. K12, ssk, k1, turn.  
Row 10: [WS] Sl1, p13, p2tog, p1, turn.  
Row 11: [RS] Sl1, k14, ssk, k1, turn work.  
Row 12: [WS] Sl1, p15, p2tog, p1, turn work.  
Row 13: [RS] Sl1, k16, ssk, k1, turn work.

Size Medium only:

Row 14: [WS] Sl1, p16, p2tog, turn work.  
Row 15: [RS] K18. Proceed to gusset.

Size Large only:

Row 14: [WS] Sl1, p17, p2tog, p1, turn work.  
Row 15: [RS] Sl1, k18, ssk, k1, turn work.  
Row 16: [WS] Sl1, p18, p2tog, turn work.  
Row 17: [RS] K20. Proceed to gusset.

### Gusset:

Set up round: With needle 1, pick up 16 (18) sts along edge of heel flap, pick up 1 st in between heel flap and instep. With needle 2, work row 1 (3) of Jane's Lace, pick up 1 st in between instep and heel flap, pick up 16 (18) sts along other edge of heel flap. 84 (94) sts. N1: 35 (39) N2: 49 (55)

Rnd 1: K18 (20), p15 (17), k2tog, work next row of Jane's Lace, ssk, p15 (17).  
Rnd 2: K all sts on N1; work next row of Jane's Lace, k to end.  
Rnd 3: K to last 2 sts on N1, k2tog; work next row of Jane's Lace, ssk, k to end.  
Rnd 4: K all sts on N1; work next row of Jane's Lace, k to end.

Rep rnds 3-4 until you have 64 (72) sts remaining. Rearrange sts so that there are 32 (36) sts on each needle. N1: (sole) 32 (36) sts. N2: (top of foot) 32 (36) sts. Proceed to foot. NOTE: You may wish to have more or less stitches on your foot. Try the sock on and determine what fit will work best. The lace pattern is stretchier than the mosaic patterns. You may find you need fewer stitches on the foot. Just work more or less decreases along your gusset to get to your desired number of stitches. Important: The stitches across the top of your foot must be divisible by 4.





Miss Marple  
Socks

### Foot:

Round 1: K all sts on N1; work next row of Jane's Lace Pattern.  
Rep rnd 1 until 2 inches to tip of toe. Proceed to toe. (Yes, it's a plain toe. Feel free to add your CC back into the mix and play with the toe!)

### Toe:

Round 1: [K1, ssk, work to last 3 sts on N, k2tog, k1] twice.  
Round 2: Knit.  
Rep these 2 rnds until 24 (32) sts remain. 12 (16) sts on each needle.

Break yarn, leaving long enough strand to graft toe using Kitchener stitch. Graft remaining stitches together.

### Finishing:

Weave in ends. Block as desired.

This pattern was modeled by Elif and test knitted by Melissa (aka Mom2legomaniacs) and Diane (aka dmop), many, many thanks!

This design is for personal, non-commercial use only. If you wish to share the pattern please don't distribute, instead, direct people to my site, or to Ravelry, so they can acquire their own copy. Thank you!

Email: [starina@hotmail.com](mailto:starina@hotmail.com)



### Crossword Solution:

S	N	E	Y	E	S	R	S	G		S	E	P	E
N	I	E	R	E	D	E	N	A	E	T	O	O	T
N	A	E	L	A	D	I	L	I	E	L	E	S	A
A	R	A	T	A	R	E	T	A	T	A	S	S	V
			S	L	S	H	U	S		S	O		
		V	A	M	A			A	R	I	U	B	E
		E	M	E	G			C	R	I	G	S	I
N	E	M	E	D	A	N	D	A	H	A		U	R
E	G	E	R	A	P	I	K	S	C	I	S	B	A
S	O	S			A	S	P	A				M	E
			T	A	E	A	R	L	A	H	A	L	A
L	O	T	O		E	L	E	O	O	T	D	S	P
O	S	I	N		L	E	G	A	N	E	D	E	L
O	R	O	N		S	E	S	N	E	G	E	E	P
K	N	O	W					A	G	A		N	A



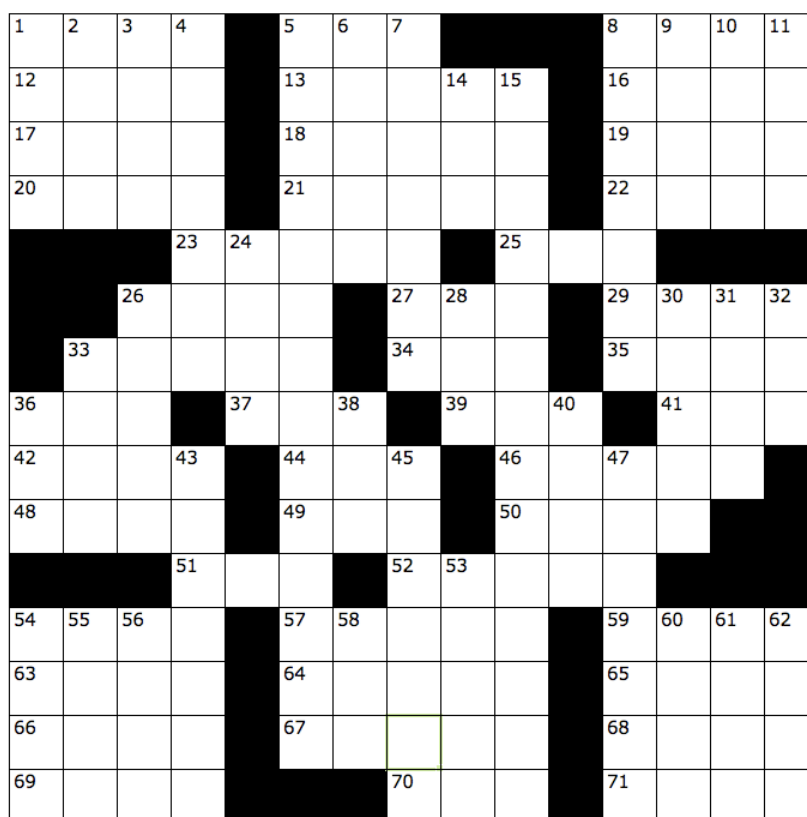


Miss Marple  
Socks

## Miss Marple Spins a Yarn by Star Athena & Grant Law

### Across

1. 11-down product
5. Ottoman officer (variation)
8. Comprehend
12. Fencing sword
13. Mendelian units
16. Maker of Kureyon
17. Place on a ship
18. Halo wearer
19. \_\_\_\_\_ many words
20. Condition caused by excessive lace frogging
21. Peter O' \_\_\_\_\_
22. Work leather
23. Volcanic mudslide
25. Consume
26. Neighbor of Phoenix
27. Cleopatra's end
29. Big heads
33. Stockinette to skilled knitters
34. Do this in a fair-isle sweater
35. Fury
36. Place for ashes
37. Lightbulb moment
39. Briggs-Little bridge
41. Those bearing Y's
42. When doubled, a notorious prison
44. \_\_\_\_ Ocasek
46. Toddler's demand
48. French honey
49. Radio's Glass
50. "I know why the caged bird sings" author, to friends
51. Signal at sea, briefly
52. Orthodox synagogue
54. "Woe is me"
57. Kind of tot
59. Gone with the Wind locale
63. Sock part usually knit plain
64. Epic Greek poem
65. Panache
66. Trumpet sound
67. Towel text at the Borgnine/Merman home



68. Halter attachment
69. Copies
70. Evidence sought on CSI
71. Has a strong desire

### DOWN

1. Bark
2. \_\_\_\_\_ on the back
3. Warren Beatty flick
4. Addi Turbos
5. Marple creator
6. Columbus' hometown
7. Mohair producers
8. You, most likely
9. Finger wagging inspiration
10. "In the neighborhood"
11. Fleece
14. Grown-up elver
15. Miss Marple's last case
24. Silk's continent
26. Exodus meal
28. Kingston beat
30. Socrates' C

31. S-curve
32. Penn's Specter
33. Mild cheese
36. Comp. port
38. Krakauer's "Into Thin \_\_\_\_\_"
40. Soap selection
43. Where you pick up stitches
45. Starting step (with "on")
47. Miss Marple's passion
53. Places on ships
54. Nick and Nora's best friend
55. Part of a Teva Durham title
56. Soothing succulent
58. \_\_\_\_ mode
60. Out of the wind
61. 67-across homonym
62. Budd and Hood