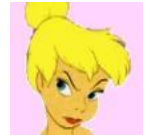


Remote Control Caddy



Pattern by SuperTinks

Finished size: 15" x 8"
Makes caddy big enough for four remote controls
(feel free to add or remove stitches to alter the width to fit your controls)

Materials: Hayfield Bonus Aran (or any spare aran you've got in your stash)
I don't know how much I used, but it hardly dented my ball of yarn
Crochet hook size 6mm
Yarn needle

Stitch guide: I have used American stitch names throughout



Pattern

The caddy is basically a big rectangle, folded over and sewn to create the pockets. For each inch you want to increase/decrease the width, add/subtract 3 stitches from each row.

- Round 1. Chain 51
- Round 2. Sc into 2nd ch from hook, sc in each ch to end (50)
- Round 3 – 6. Ch 1, turn, sc in each sc to end (50)
- Round 7. Ch 4, turn, tr in 2nd sc from chain, tr in each sc to end (50)
- Round 8. Ch 1, sc in each tr to end (50) *don't forget to sc into the turning chain*
- Round 9. Ch 4, turn, tr in 2nd sc from chain, tr in each sc to end (50)
- Round 10. Ch 1, sc in each tr to end (50)
- Round 11 – 14. Ch 1, sc in each sc to end (50)
- Round 15. Ch 4, turn, tr in 2nd sc from chain, tr in each sc to end (50)
- Round 16. Ch 1, sc in each tr to end (50)
- Round 17. Ch 4, turn, tr in 2nd sc from chain, tr in each sc to end (50)
- Round 18. Ch 1, sc in each tr to end (50)
- Round 19. Ch 4, turn, tr in 2nd sc from chain, tr in each sc to end (50)
- Round 20. Ch 1, sc in each tr to end (50)
- Round 21 – 32. Ch 1, sc in each sc to end (50)
- Round 33. Ch 4, turn, tr in 2nd sc from chain, tr in each sc to end (50)
- Round 34. Ch 1, sc in each tr to end (50)
- Round 35. Ch 4, turn, tr in 2nd sc from chain, tr in each sc to end (50)
- Round 36. Ch 1, sc in each tr to end (50)
- Round 37. Ch 4, turn, tr in 2nd sc from chain, tr in each sc to end (50)
- Round 38. Ch 1, sc in each tr to end (50)
- Round 39 – 42. Ch 1, sc in each sc to end (50). Fasten off

Assembly

Take your rectangle and lay it out flat. You should have the first round at the top, and your finishing point at the bottom. Note the pattern layout – the wide section of 13 sc rows should be towards the bottom, with three rows of treble crochet above and below.

Fold the piece, matching the bottom 5 sc rows with the 5 sc rows between the rows of treble crochet. You should end up with the three rows of treble crochet lying on top of each other, with the solid sc section at the fold, ready to take the weight of your remote controls.

Sew or crochet the sides together. I used slip stitches to crochet mine together, but you can use whatever you feel most comfortable with.

To make the individual pockets, take a long piece of yarn and sew the front to the back, all the way up the double layered section. Be sure to attach your yarn securely, and go over it several times to make sure it's not going to come away under the weight of the controls.

I did the middle one first, then the two on the sides, just to make sure I got them evenly spaced.

Weave in all your ends, and you're done!



This caddy is designed to be attached to the wall – use picture hook nails, hooking your 5 row sc section over them to secure to the wall. I did 4 nails on the top row, one in each corner and two spaced out along the edge, plus one in each bottom corner to keep it from flapping about when you're trying to take the controls out.