



# CHELSEA HAT



**Gauge:** 20 sts per 10 cm

**Size:** Small/medium, fitting children from about 10 to adults. (Hat circumference 48 cm)

Medium/large (Hat circumference 52 cm)  
Length of hat is 21[23] cm.

Numbers for larger size are written in brackets.

**Yarn suggestion:** Juvel or pt4 (dk/light worsted).

**Colours:** Blue, white, yellow, red

**Needles:** Circular needles 3 and 4 mm, dpn's 4 mm (or needles to give right gauge).

**Tapestry needle** for weaving in the ends en for embroidery of chain sts.

## Instructions

Cast on 96 [104] sts with yellow yarn on smaller needles and work garter sts (knit all rows) for 2 [4] rows. Change to blue, and work 8 more rows of garter sts. With yellow, work 2 more rows. Cut yellow yarn.

Change to larger needles and join in the round. Continue working in stockinet sts. Work 3 rounds in blue, then continue according to chart with blue and white yarn. Chart is repeated twice.

## Abbreviations

dpn	double pointed needle
k	knit
k2tog	knit two together
p	purl
rem	remaining
ssk	slip 2 stitches as if to knit, then return to left needle and knit together through back loops
st(s)	stitch(es)

## Decreasing with red flower

Larger size only:

Knit one round decreasing 8 sts like this:  
\*K11, k2tog\* repeat from \* to \* (=96 sts)

Knit 2 rounds

Both sizes:

Knit one round decreasing 6 sts like this:  
\*K14, k2tog\* repeat from \* to \* (=90 sts)

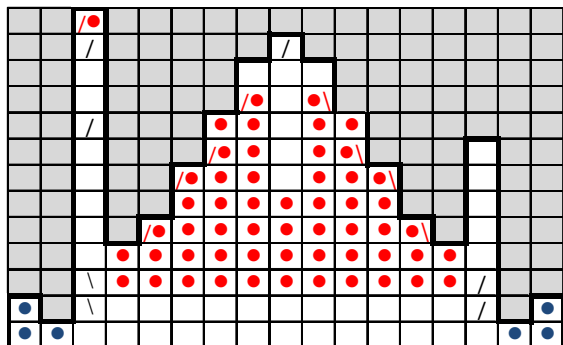
Knit 2 rounds

Knit one round decreasing 5 sts like this:  
\*K16, k2tog\* repeat from \* to \* (=85 sts)

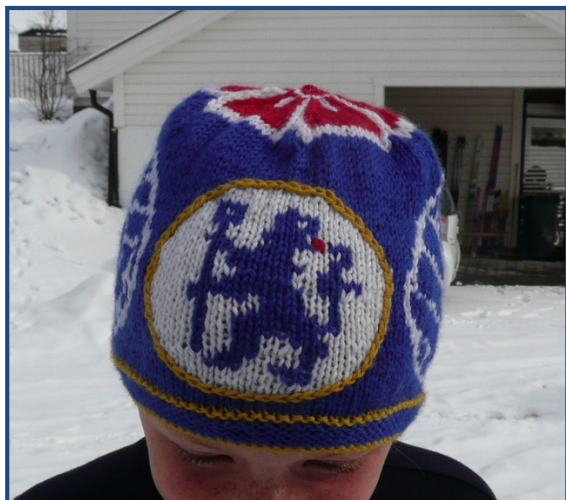


Then decrease following this chart:

	k2tog (white)
	ssk (white)
	k2tog (red)
	ssk (red)
	no stitch



Cut red yarn and draw yarn through rem 5 sts.



### Alternative decreasing, blue only

Larger size only:

Knit one round decreasing 8 sts like this:  
\*K11, k2tog\* repeat from \* to \* 7 more times (=96 sts)

Knit 2 rounds

Both sizes:

1<sup>st</sup> round: \*\*K10, k2tog\* repeat from \* to \*  
7 times more (=88 sts)  
2<sup>nd</sup> and 3<sup>rd</sup> round: k

4<sup>th</sup> round: \*\*K9, k2tog\* repeat from \* to \* 7 times more (80 sts)

5<sup>th</sup> round: k

6<sup>th</sup> round: \*K8, k2tog\* repeat from \* to \*  
7 times more (72 sts)

Continue decreasing like this every 2<sup>nd</sup> round, reducing the number of sts between k2tog by one each time till you have 16 sts.

Next round: K2tog = 8 sts

Cut yarn and draw through rem 8 sts.



Sew the border together in the back.  
Weave in ends. With chain sts, embroider the yellow outline of the front figure. Also make the red tongue. See photo.

Wash and block if needed.



Chart for size small/medium

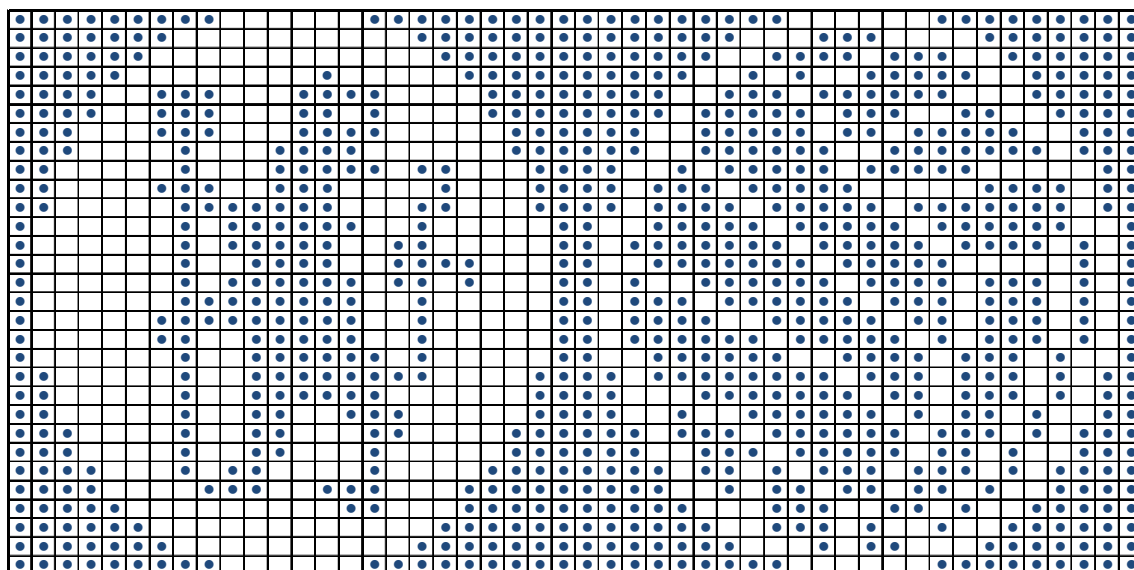
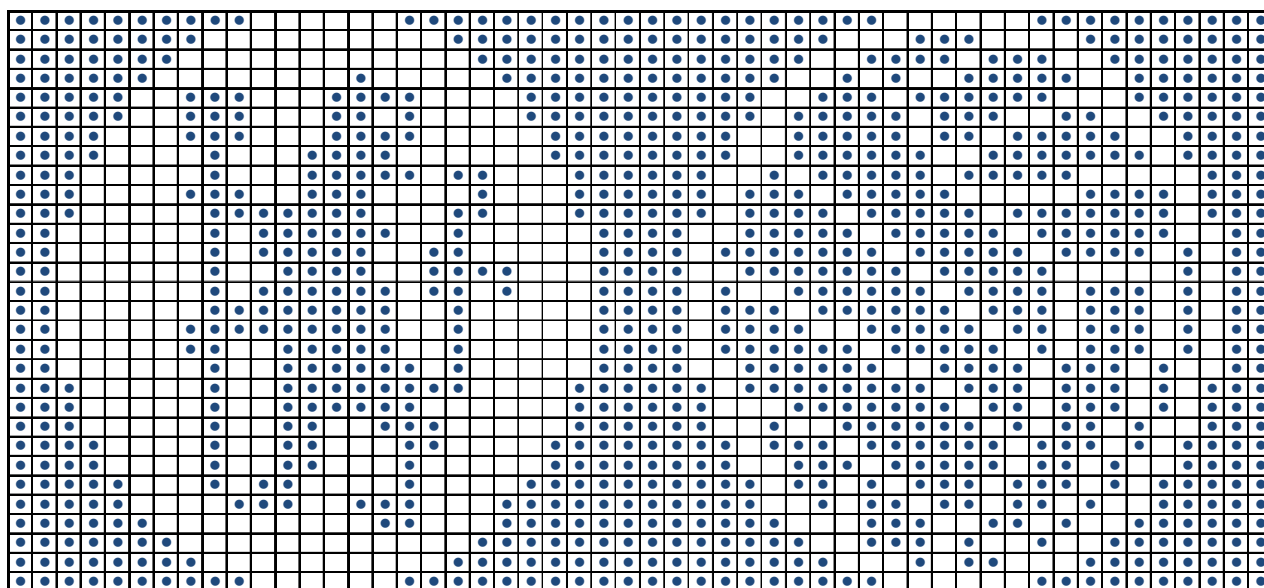
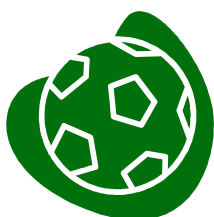


Chart for size medium/large



Thanks for helping us raise money for a new  
football ground in Lillehammer, Norway!

Remember this is your personal copy.



[www.kunstgress-lillehammer.blogspot.com](http://www.kunstgress-lillehammer.blogspot.com)

Content and photos are © 2010 torirot design.  
The pattern is for personal and non-profit use  
only. All rights reserved.

*Chelsea hat ©2010 torirot design*