

# FARBE

---



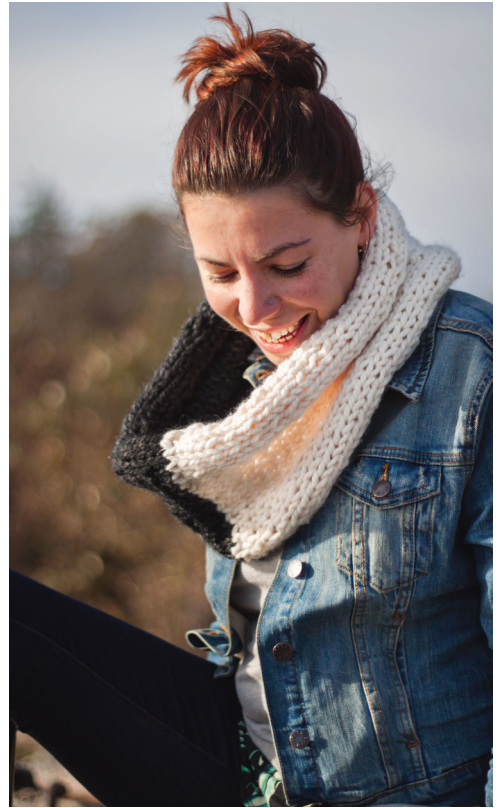
cozy & quick to knit  
contrast colored cowl

knit flat  
stockinette stitch  
super bulky weight

**VERY SHANNON**

PATTERNS FOR THE MODERN KNITTER + SEWER





## FARBE BY SHANNON COOK

Farbe is quick to knit and fun to wear! Great for beginners and color lovers, Farbe is knit flat on larger needles for nice drape and then seamed with Kitchener allowing you to choose your length and colors.

### GAUGE

7.5 sts and 11.5 rows = 4in/10cm in St st (flat and unblocked)

### YARN

2 skeins Lion Brand Wool Ease Thick & Quick (80% Acrylic, 20% Wool, 97m/106yds per 170g/60oz skein), shown in Fisherman and True Black [Super Bulky]

### NEEDLES

12mm/US17 needles

*Adjust needle size if necessary to obtain the proper gauge.*

### NOTIONS

Crochet needle  
Yarn needle

### FINISHED MEASUREMENTS

Approx 30.5in/77.5cm circumference (unstretched) and 13.5in/34cm high (unblocked).

### ABBREVIATIONS

**approx** approximately  
**CO** cast-on  
**RS** right side  
**st(s)** stitch(es)  
**St st** Stockinette stitch  
**WS** wrong side

### STITCH GUIDE

Both the Provisional Crochet Cast-On and Kitchener Stitch look scarier than they are. Give them a try, I promise you'll be surprised how easy they really are and what wonderful additions to your knitting skills they will be.

*Provisional Crochet Cast-On:* For helpful visual instructions we like:

<http://veryshannon.com/blog/2014/08/summer-sweater-knit-along-provisional.html>

*Kitchener Stitch:* For helpful visual instructions we like:

<http://www.knittinghelp.com/video/play/kitchener-stitch>

### PATTERN NOTES

You can easily customize Farbe to your desired length and height. Simply add/take away stitches and rows to suit your taste. You could also add in more colors, add stripes - just have fun with it!

# DIRECTIONS

---

## BODY

Using Color A and the **Provisional Crochet Cast-On**, CO 25 sts. *See **Stitch Guide on Page 1** for link to visual tutorial.*

**Row 1 (RS):** Knit.

**Row 2:** Purl.

Continue working in St st until cowl measures approx 15in/38cm from CO edge, ending on a WS row.

## COLOR CHANGE

*Switch to Color B.*

**Row 1 (RS):** Knit.

**Row 2:** Purl.

Continue working in St st until cowl measures approx 15in/38cm from start of color change, ending on a WS row.

Cowl should now measure approx 30in/76cm from CO edge.

Cut yarn, leaving a 20in/51cm tail. Using a yarn needle and tail, seam cowl ends together using the **Kitchener Stitch**. *See **Stitch Guide on Page 1** for a link to visual tutorial.*

