

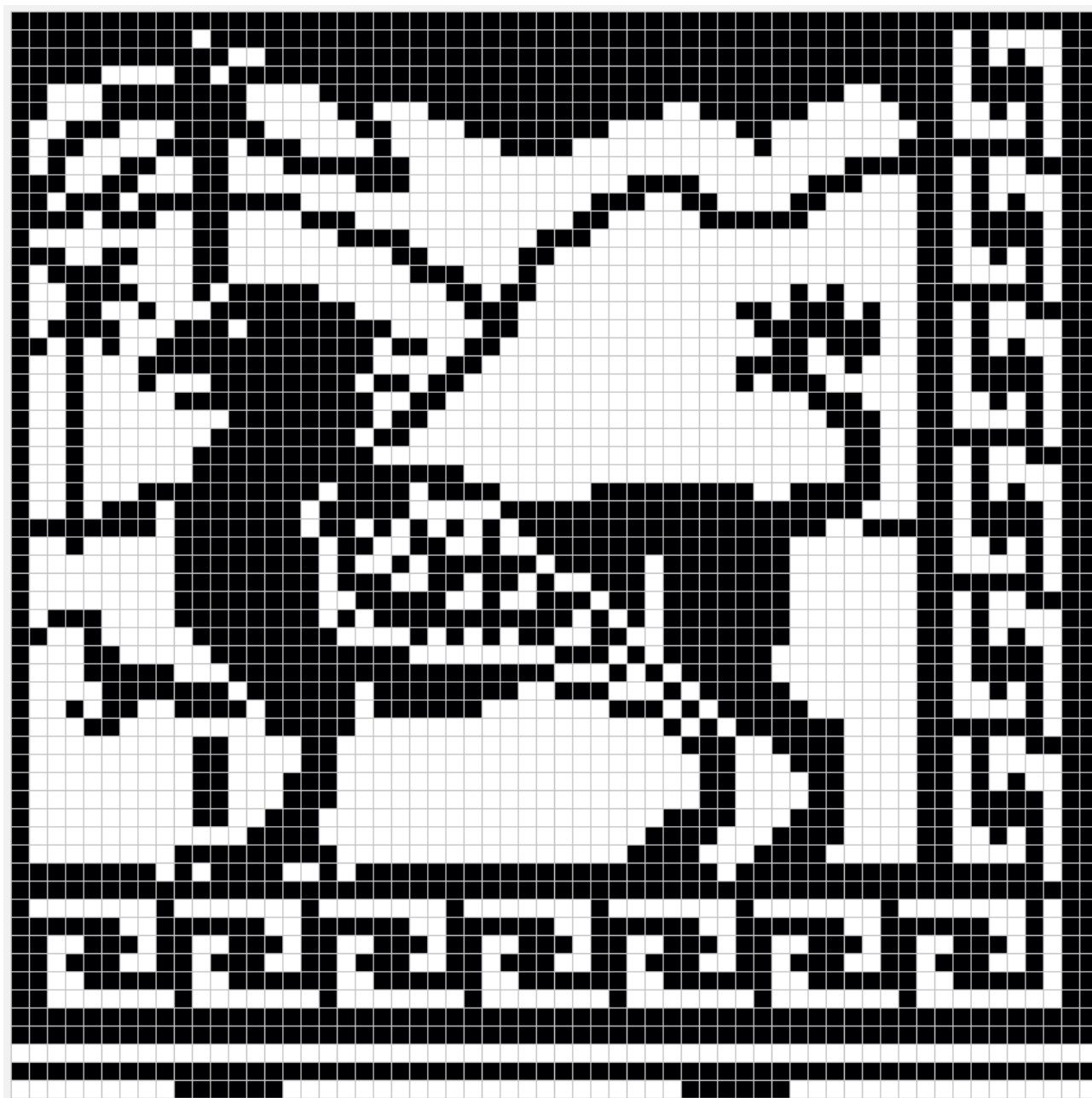
STATLEY GRIFFON CHART

Contains one black and white and one 10 colour square chart for cross stitch and crochet; one black and white and one 10 colour knitting chart, each with 4 zoom charts.

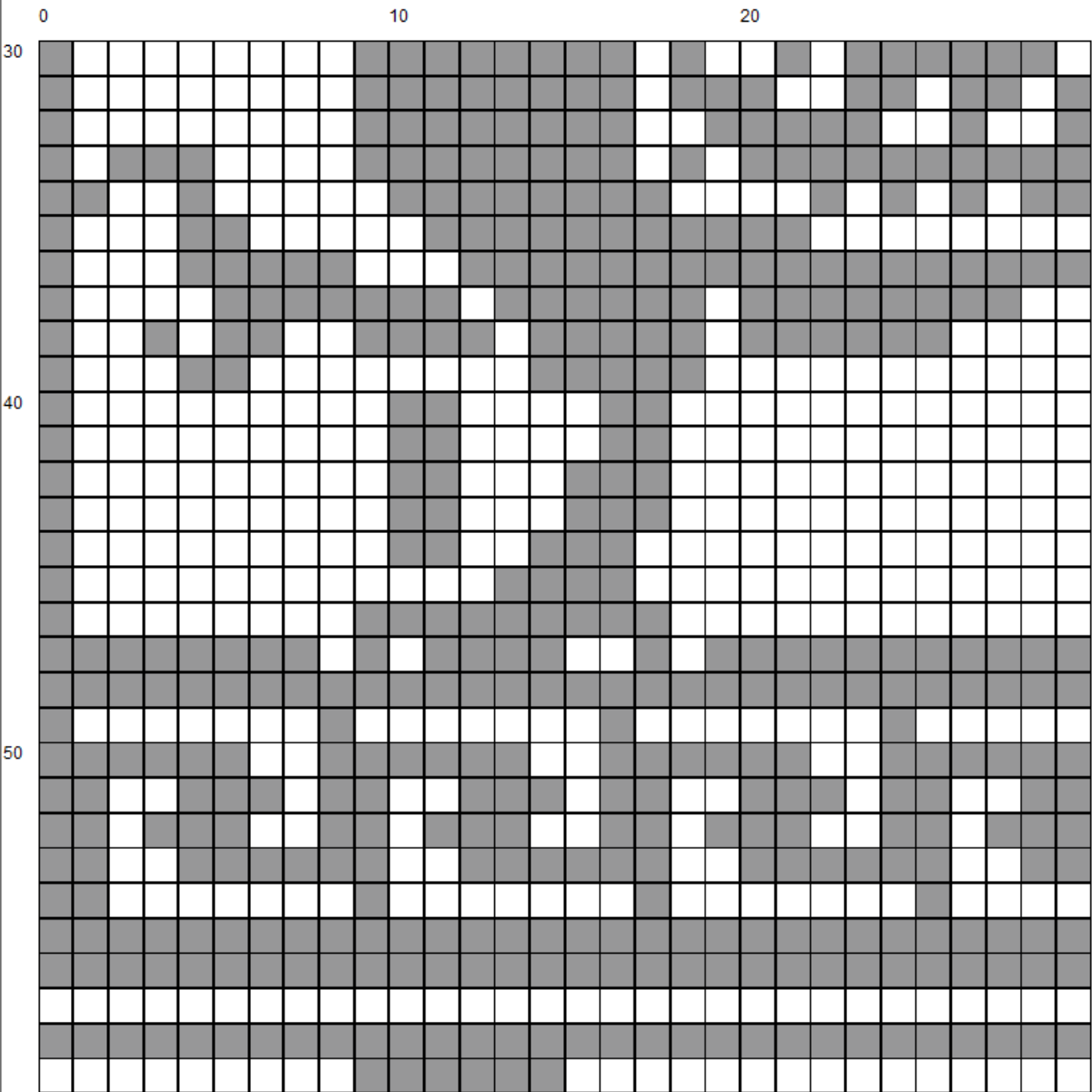
Cast on the number of stitches required (for the griffin knitting chart it is 60). The chart is begun in the right bottom corner, going from right to left on odd rows and left to right on even rows on straight needles or if knitting in a circle using circular needles, from left to right each row. You will notice that the knitting chart is larger than the square chart and slightly different/more detailed due to the difference in the proportions of the stitches.



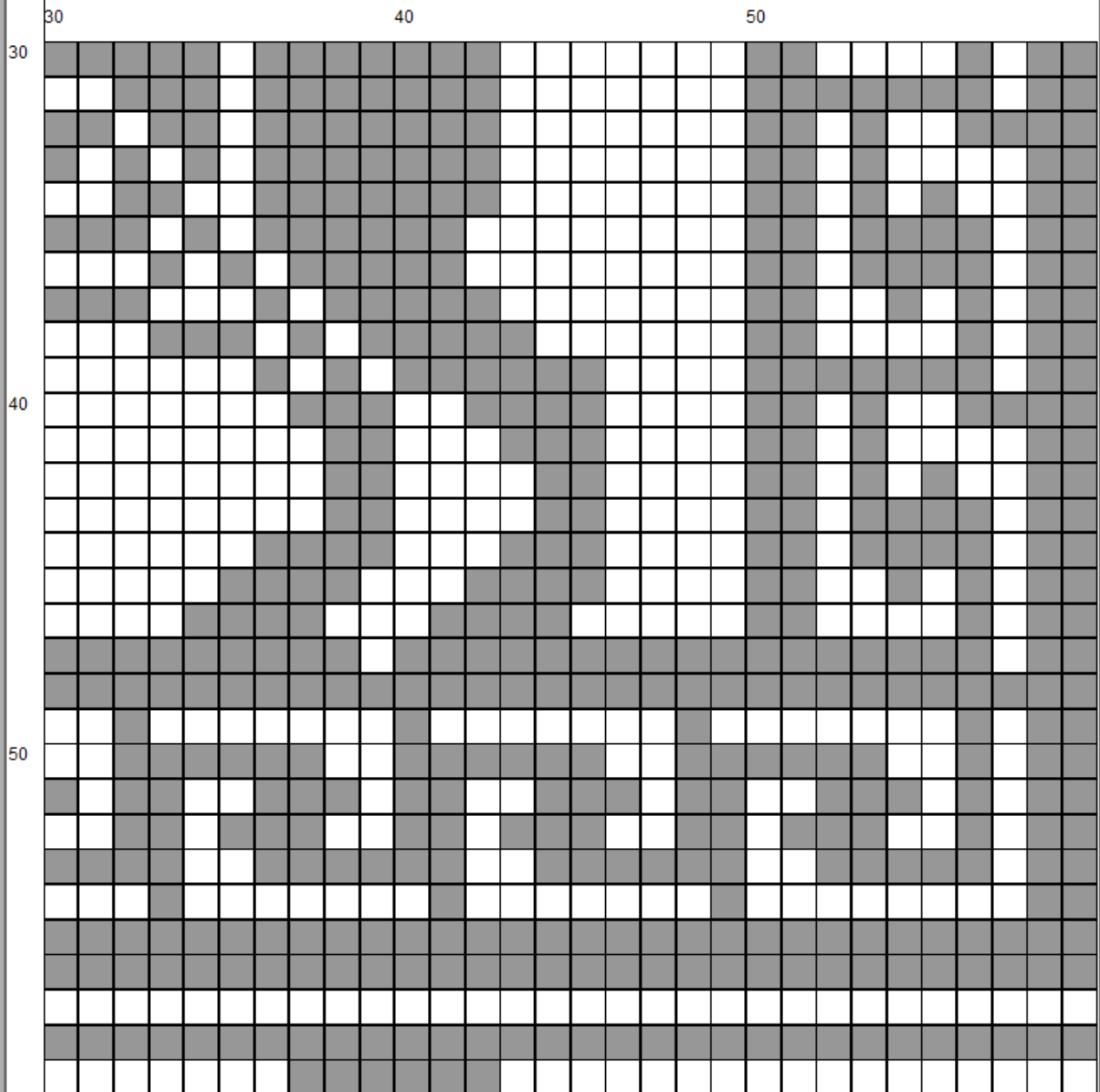
Copyright to WitchWolfWeb Creations
Items made using these charts can be sold without royalty or restriction.



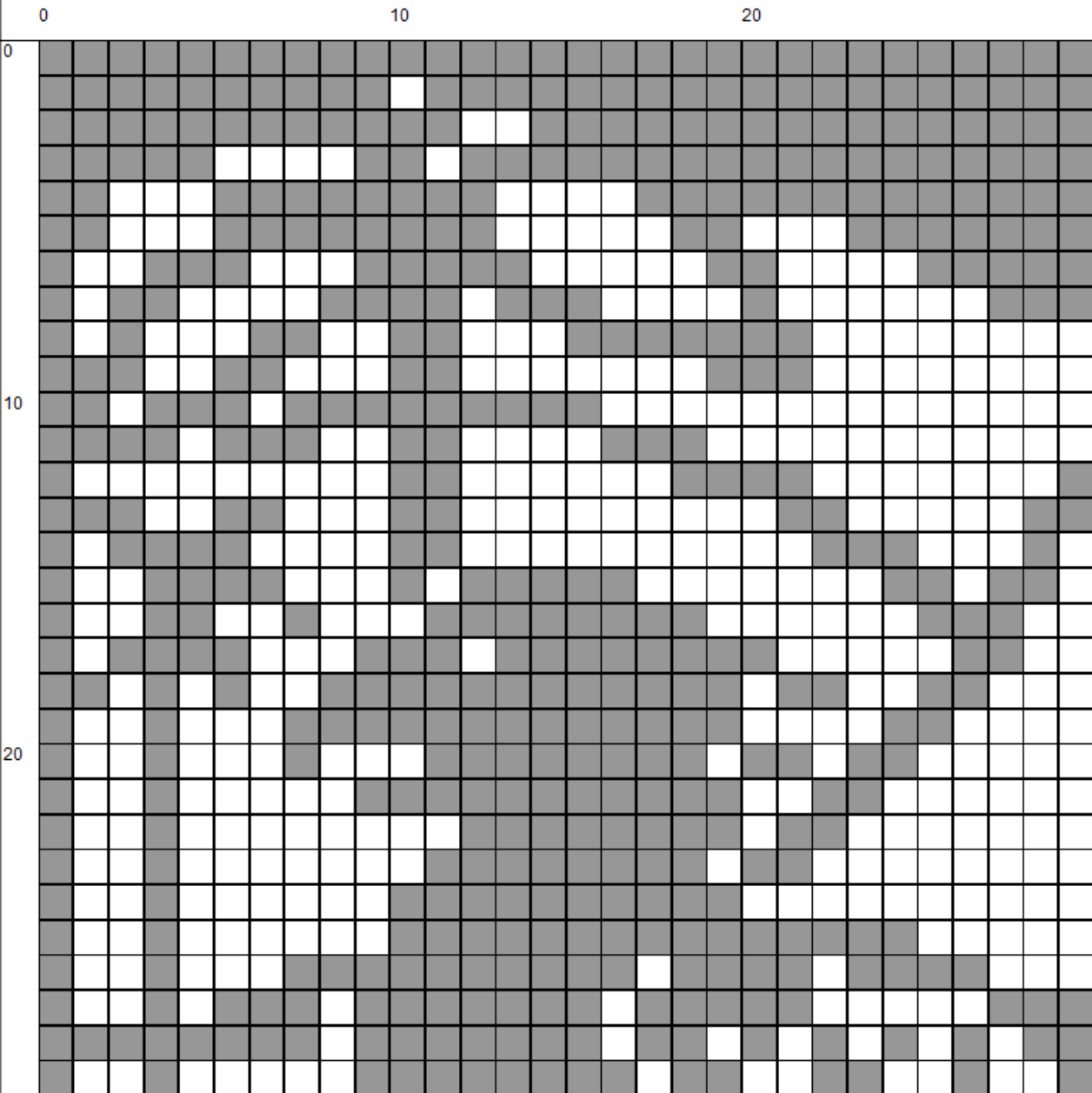
Square Chart



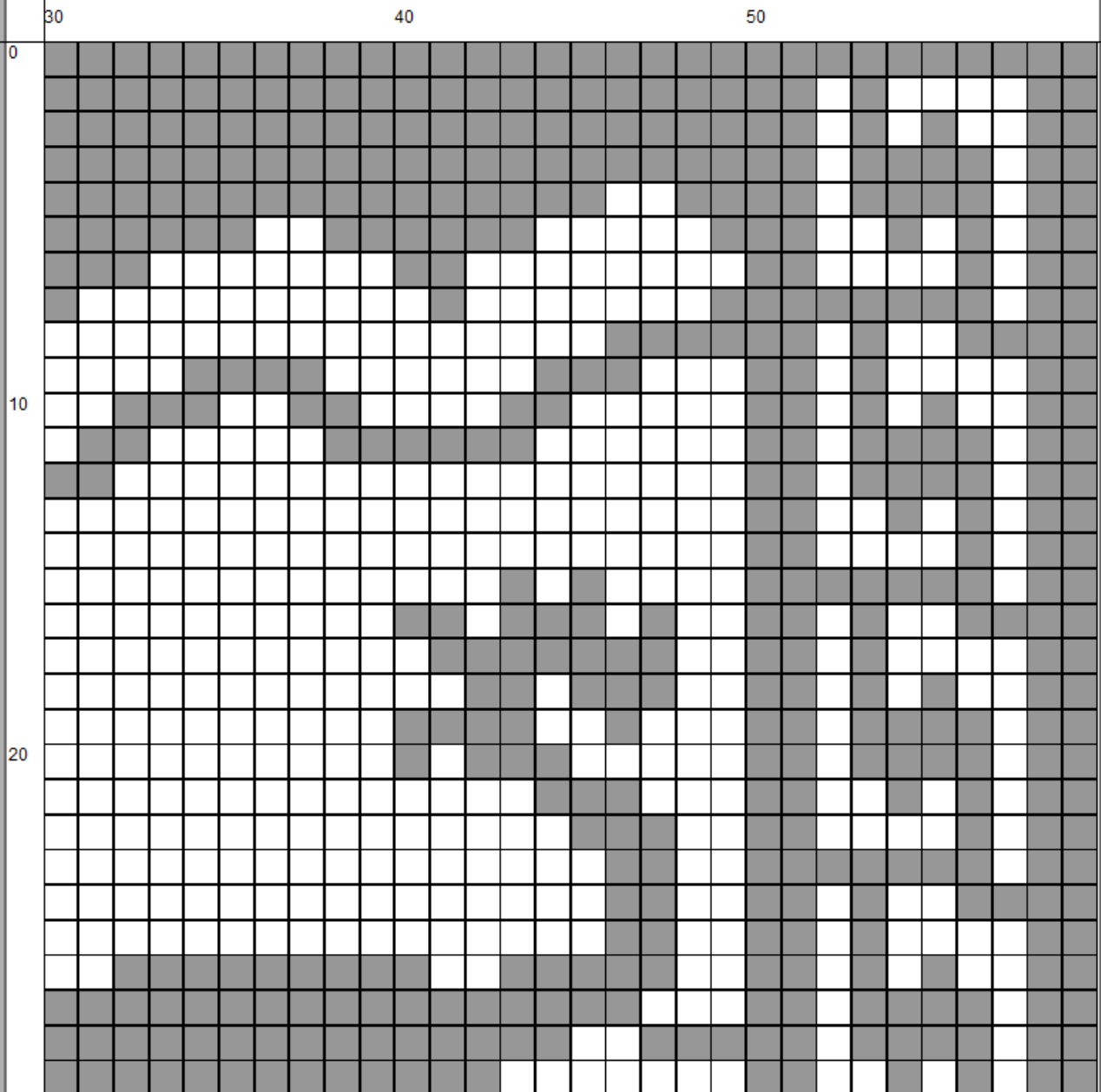
Square Chart bottom left



Square Chart bottom right



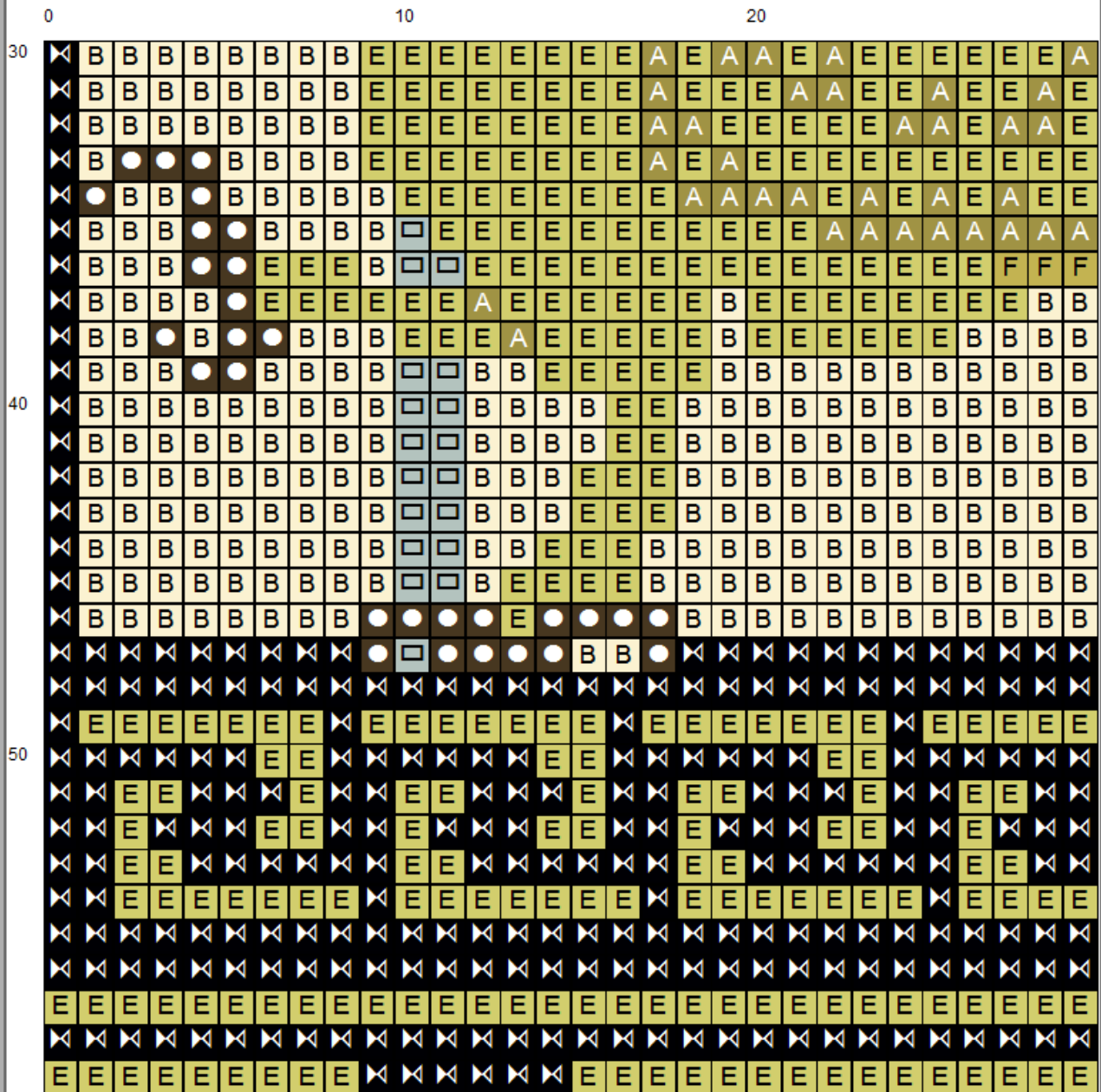
Square Chart top left



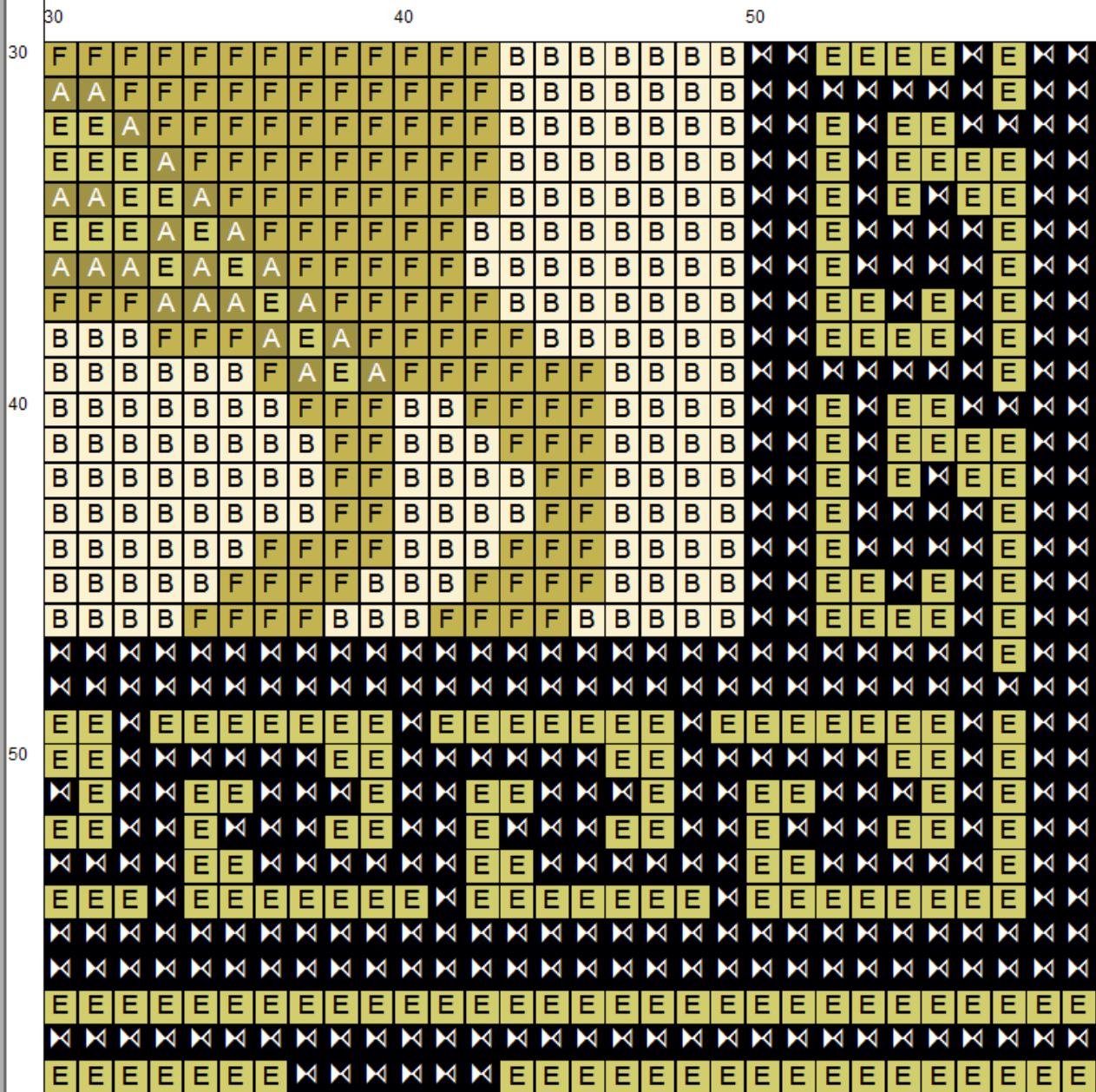
Square Chart top right



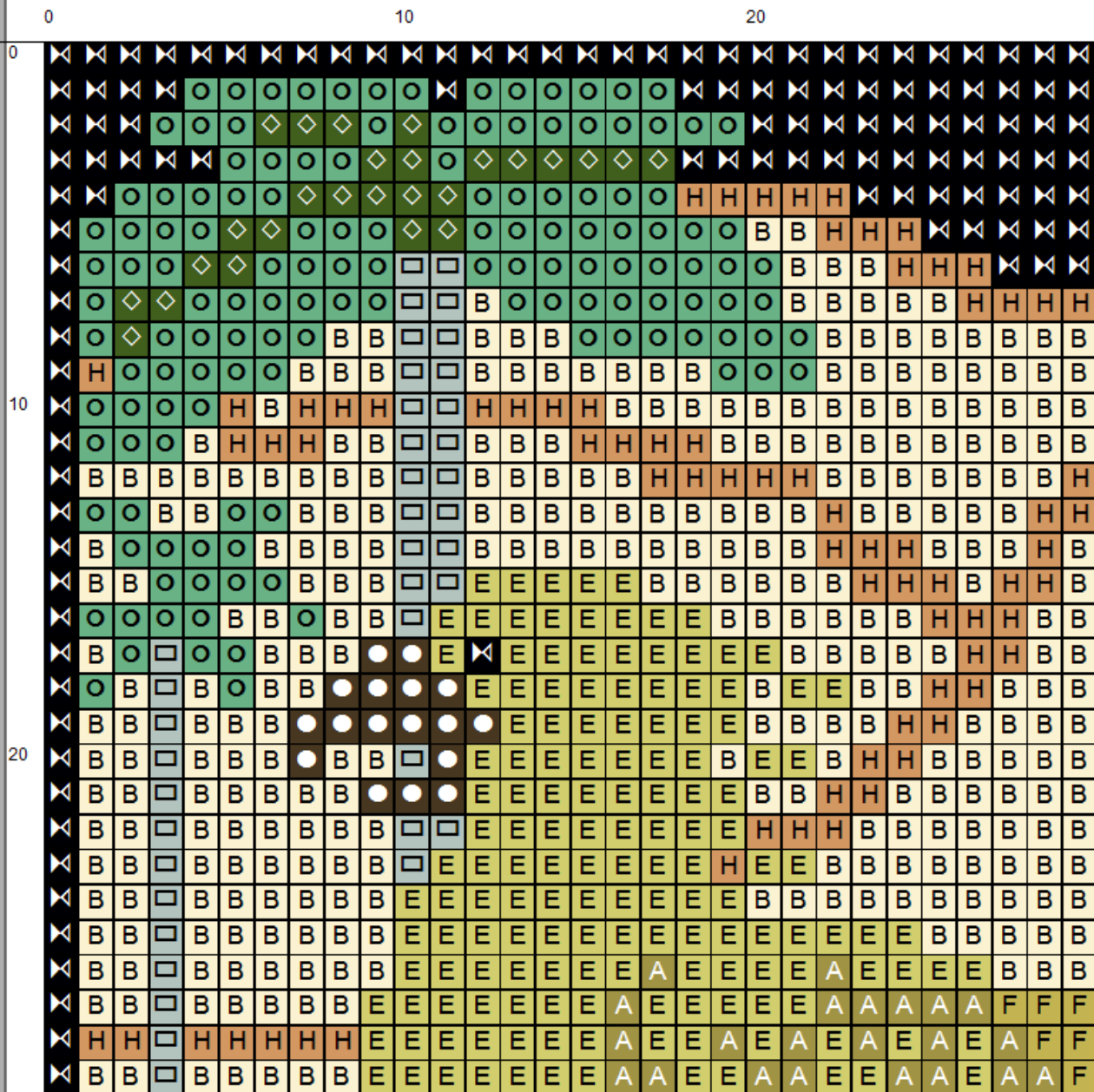
Square Chart Colour



Square Chart Colour bottom left



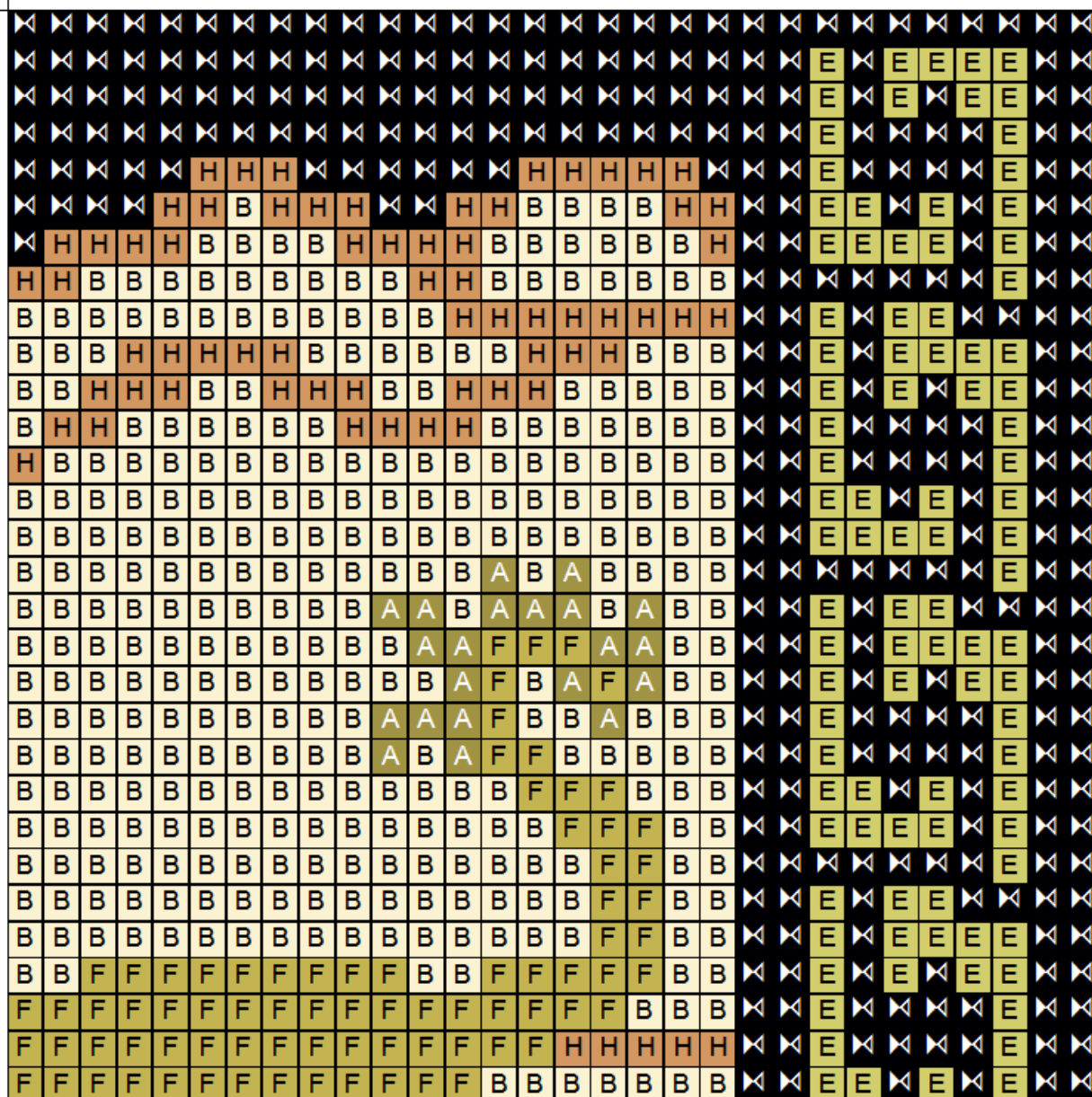
Square Chart Colour bottom right



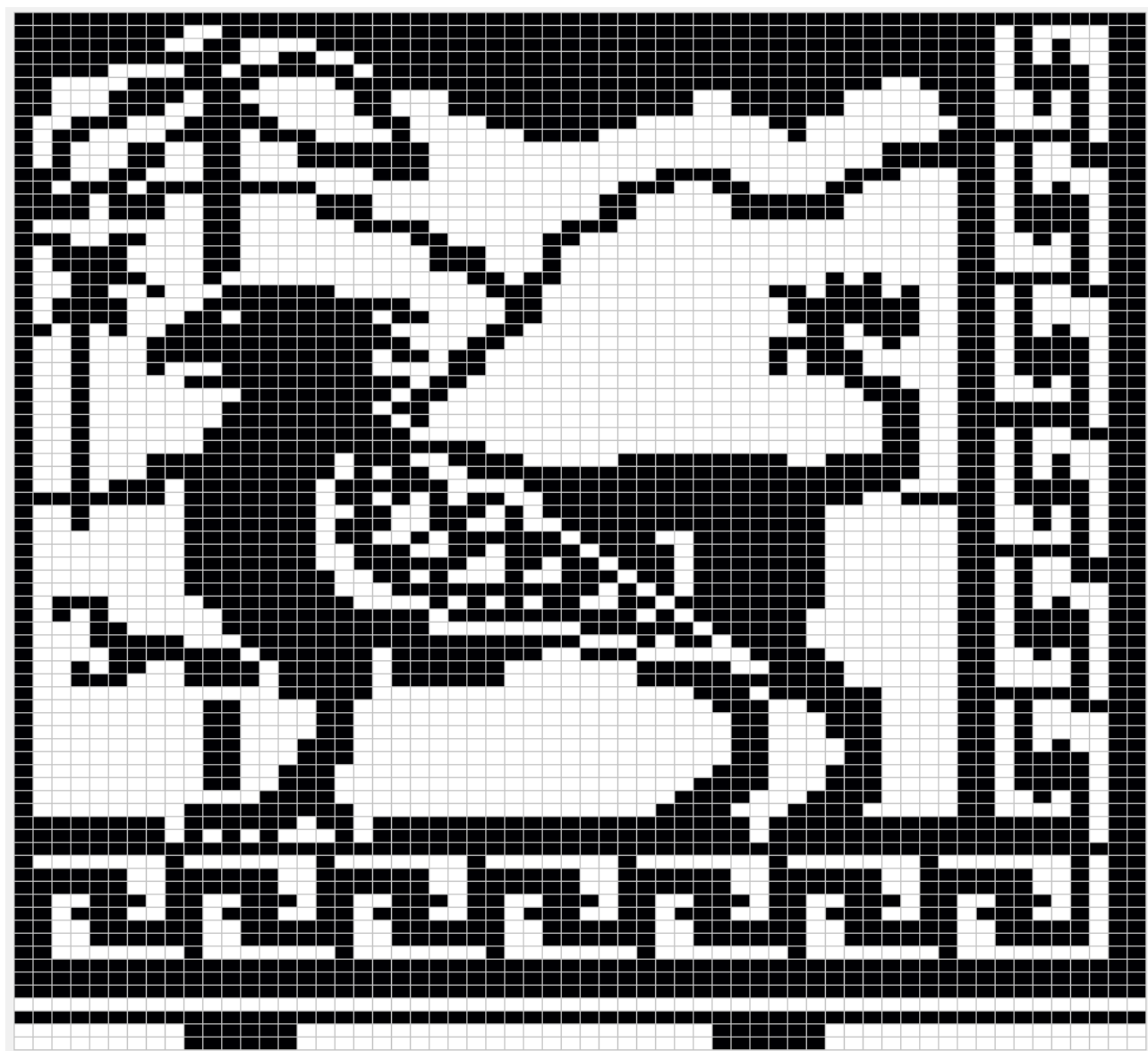
Square Chart Colour top left

50

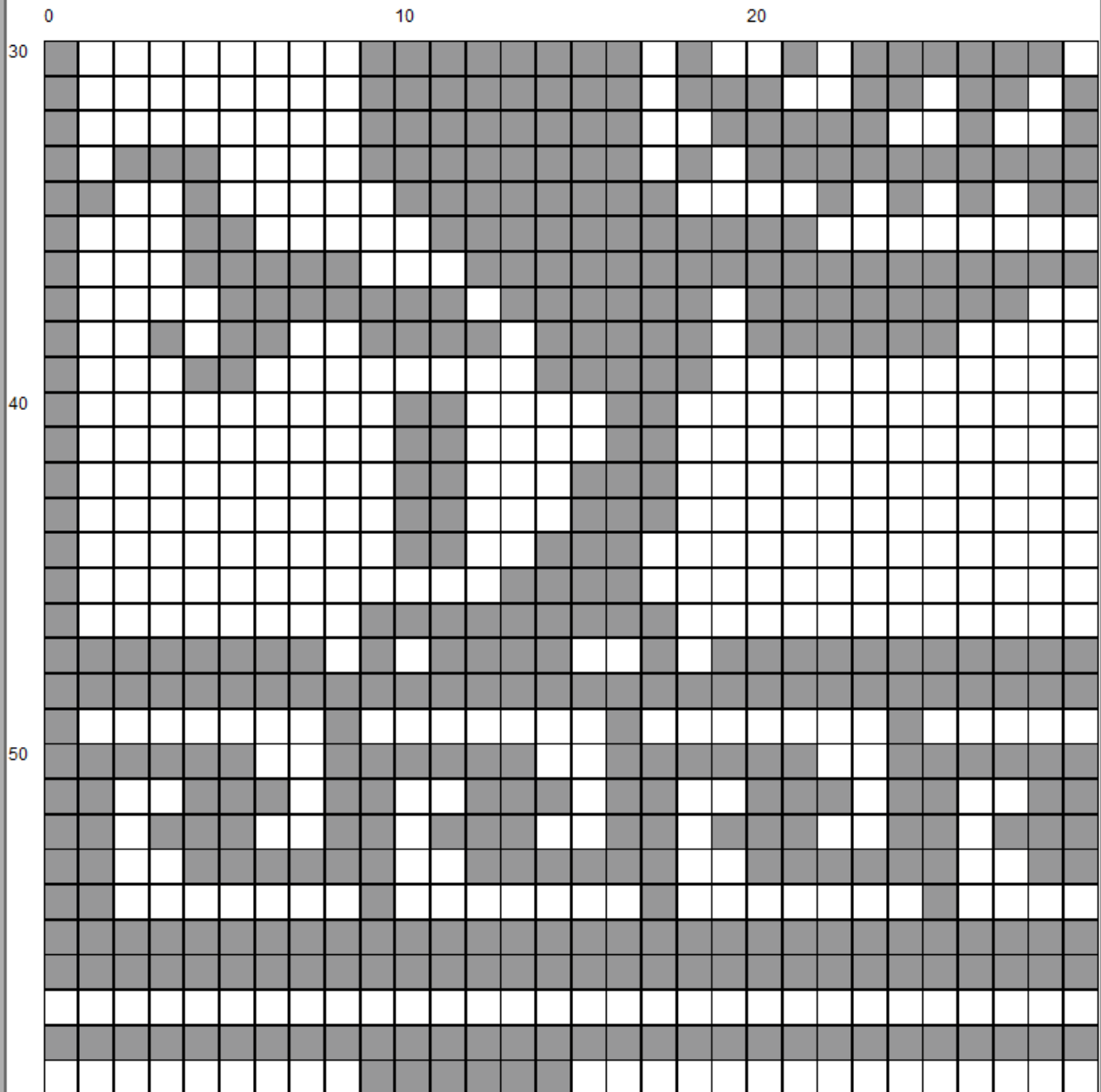
20



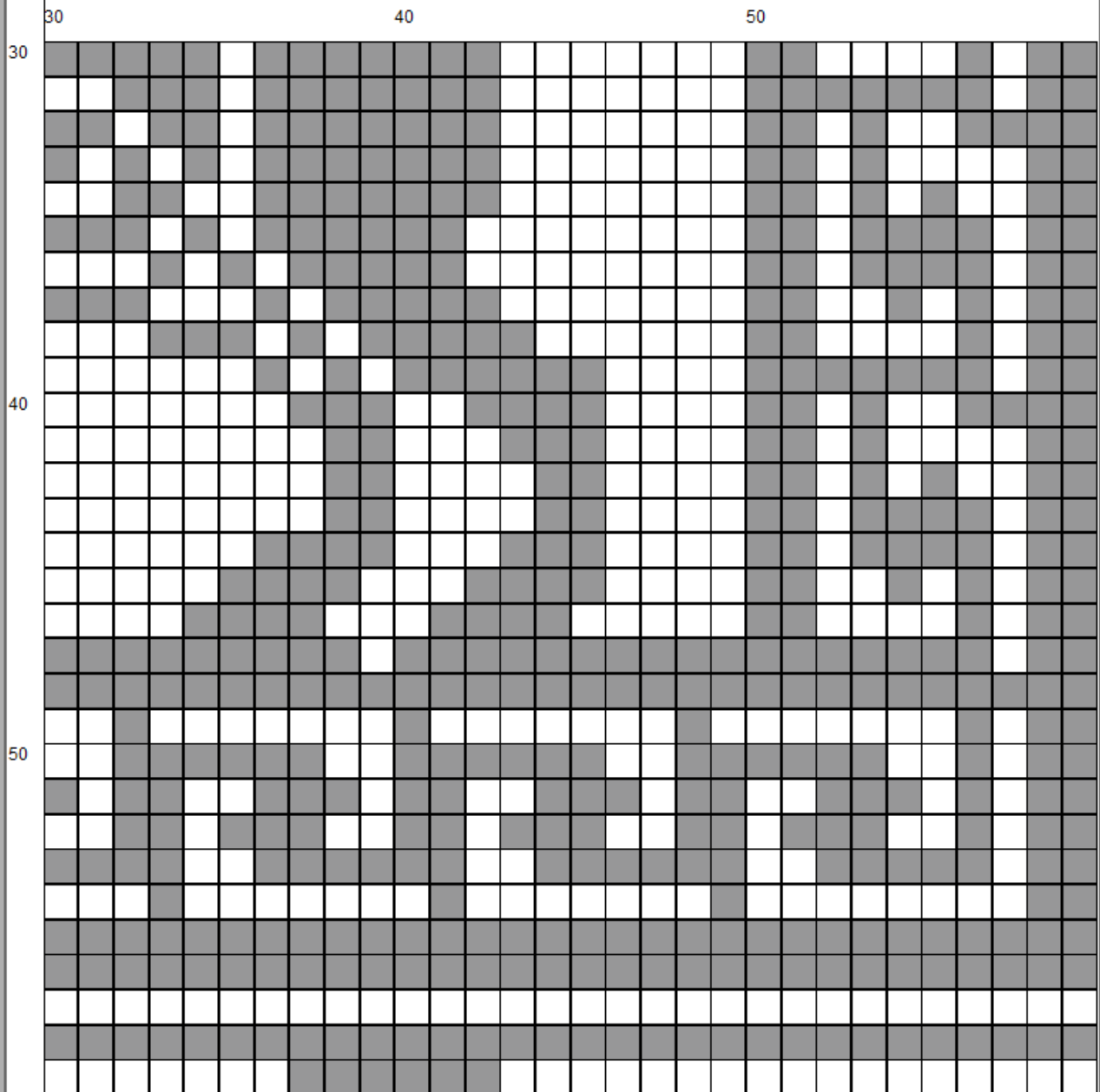
Square Chart Colour top right



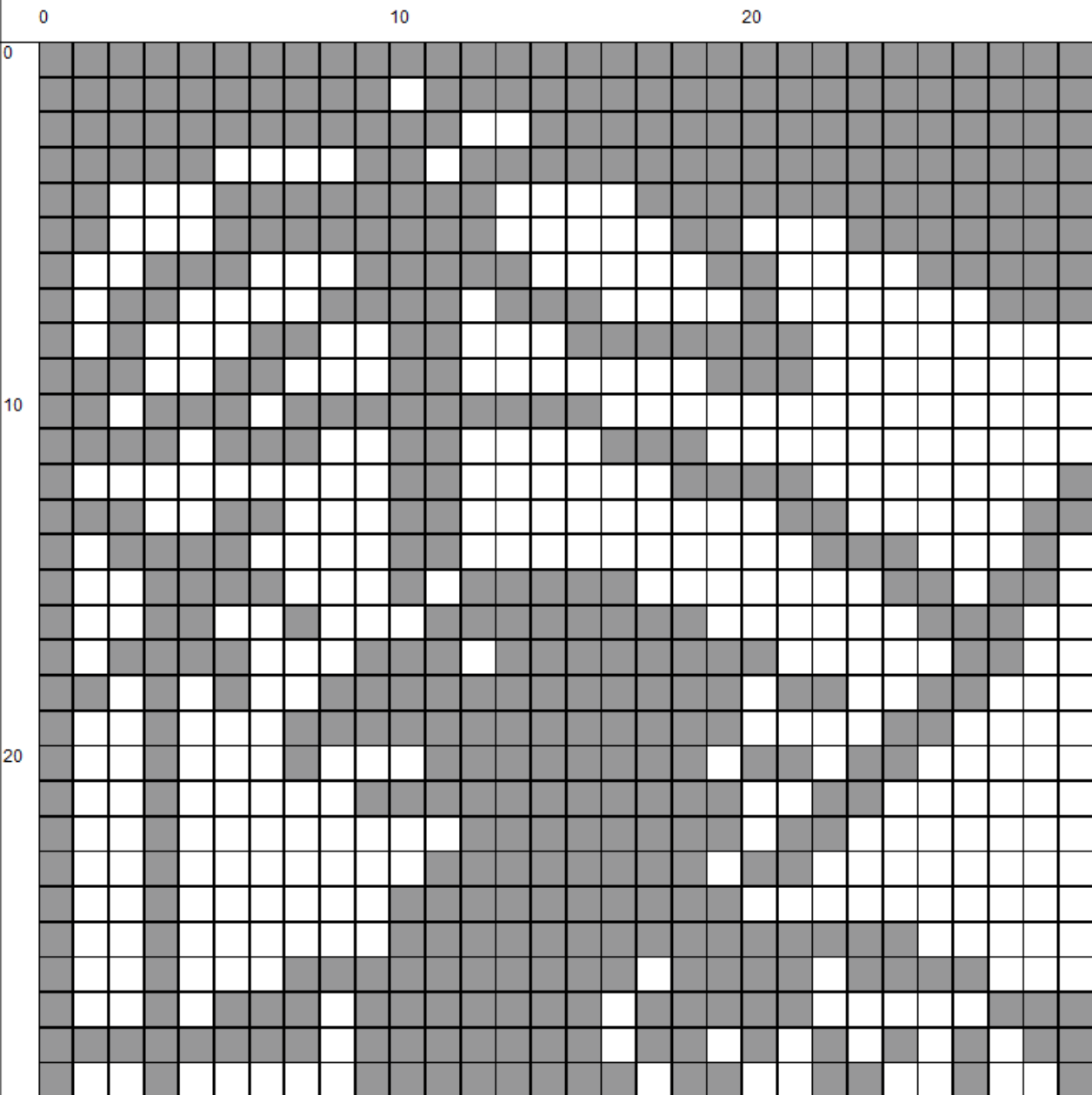
Black and white Knitting Chart



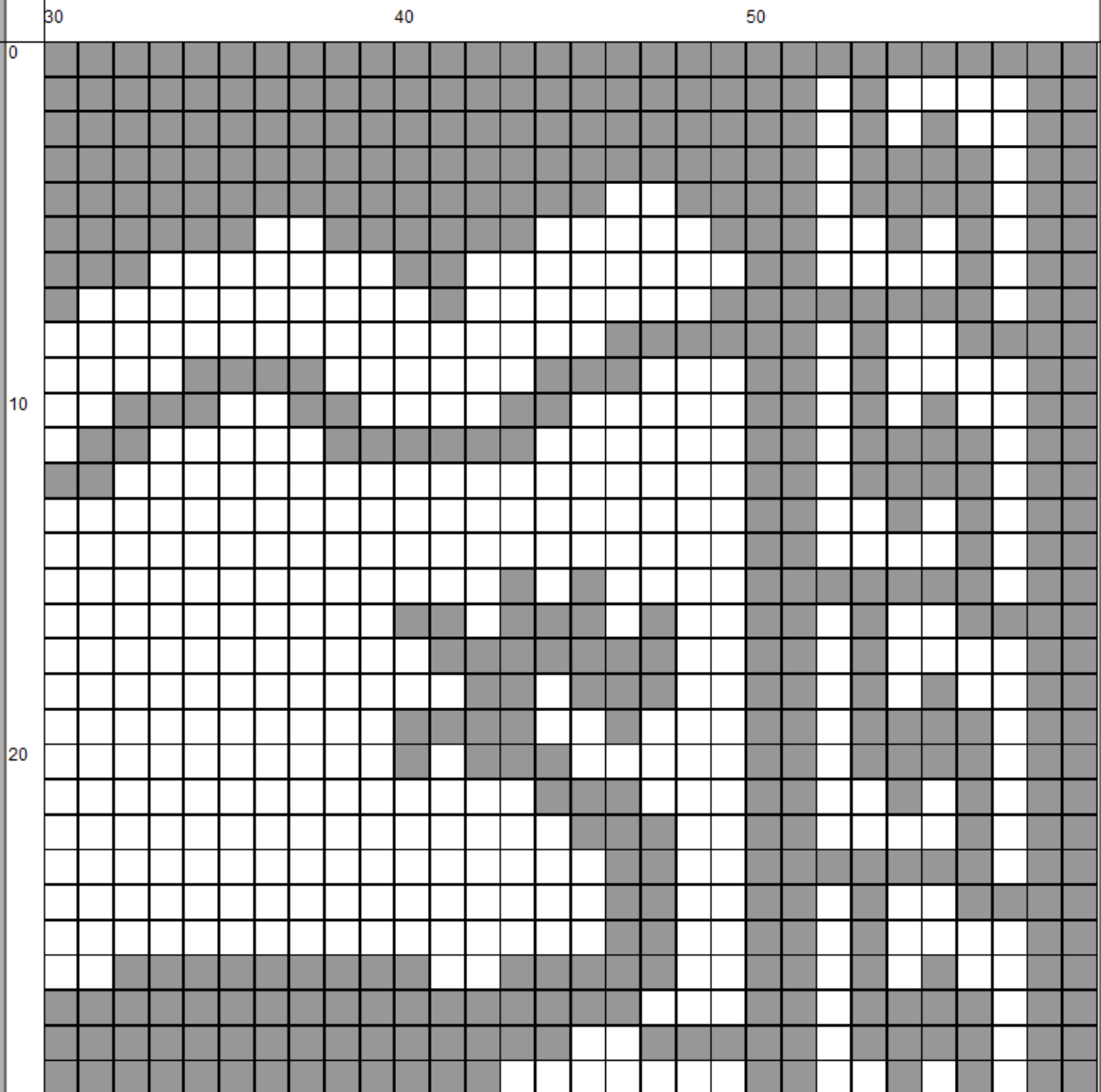
Black and white Knitting Chart bottom left



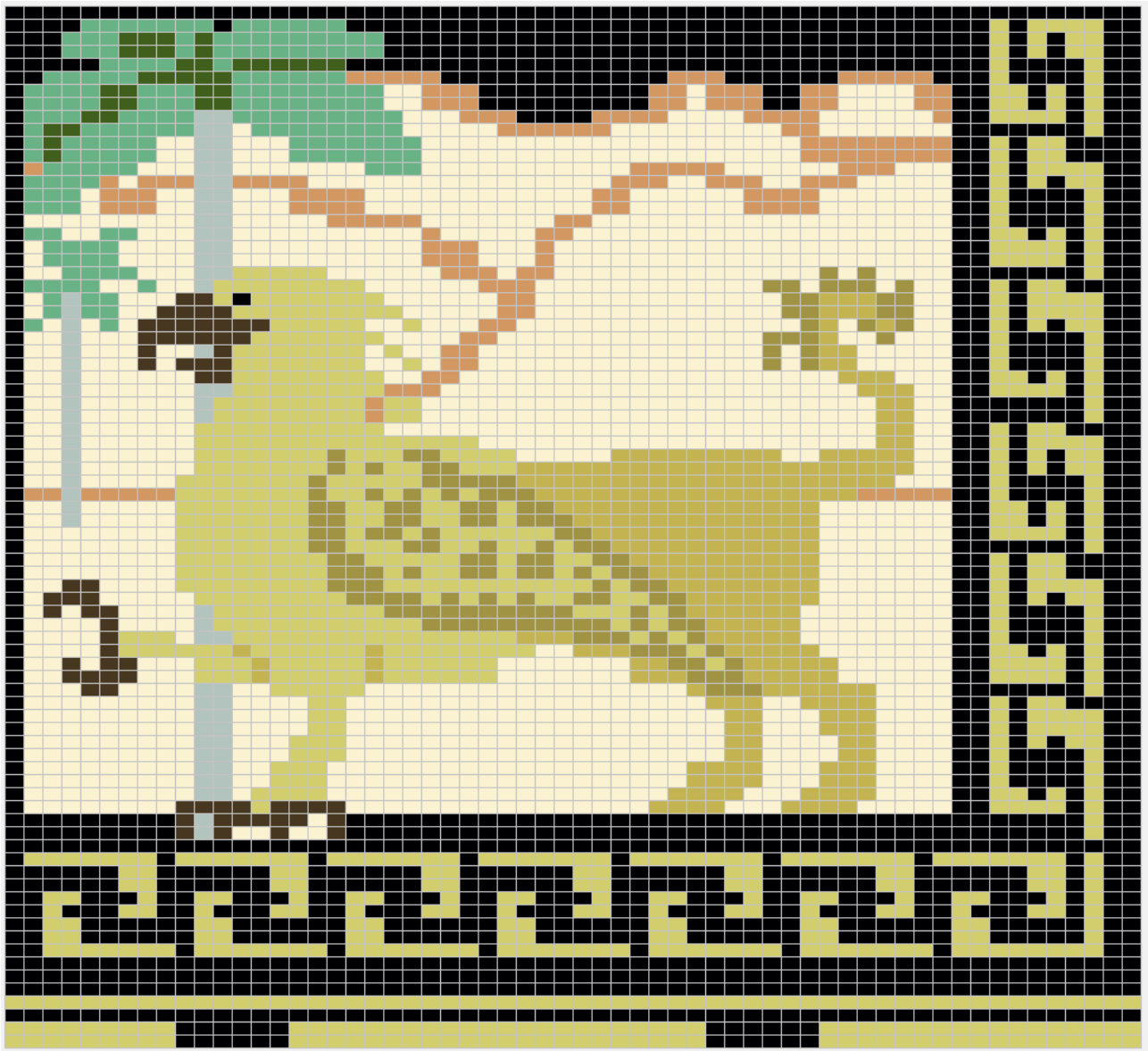
Black and white Knitting Chart bottom right



Black and white Knitting Chart top left



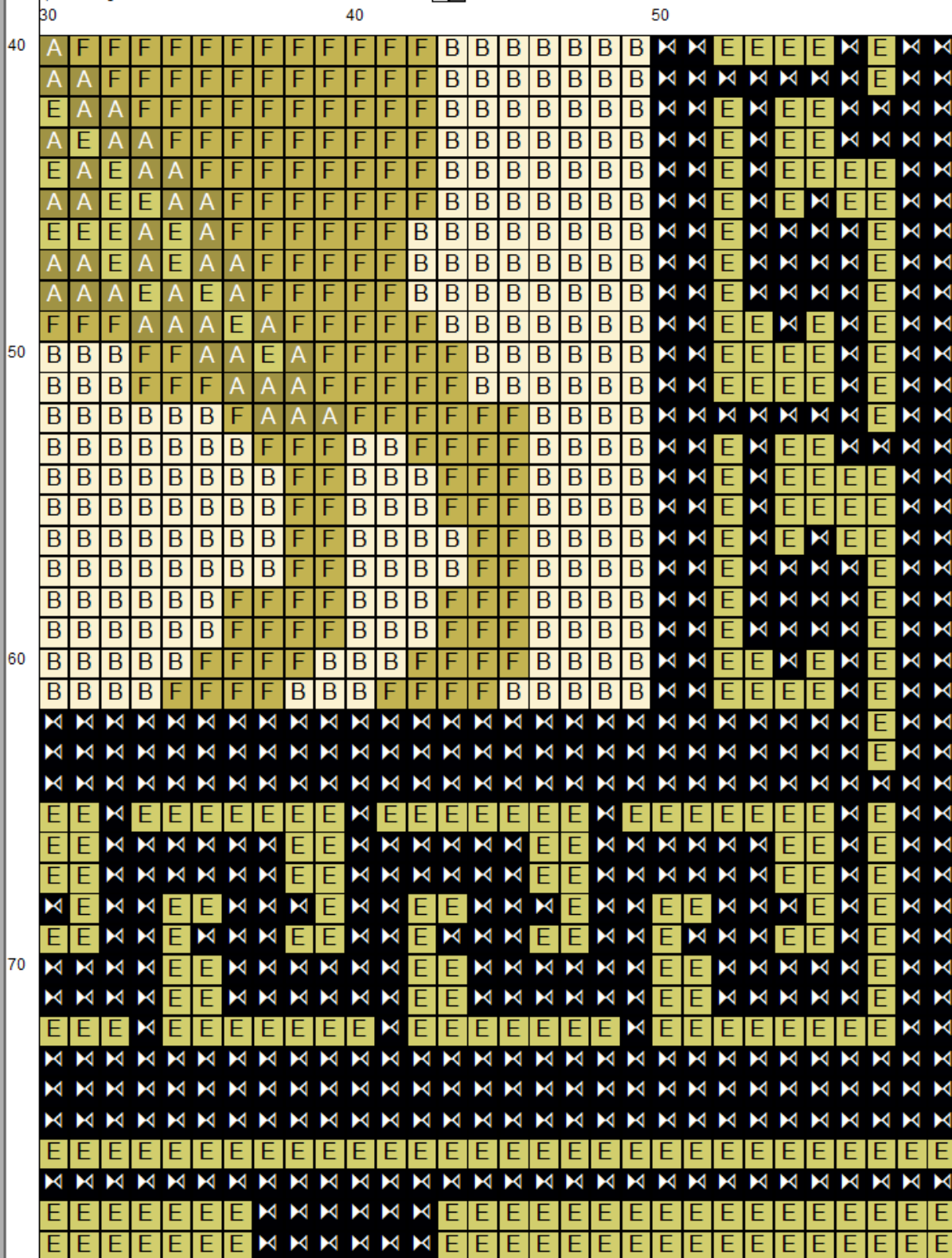
Black and white Knitting Chart top right



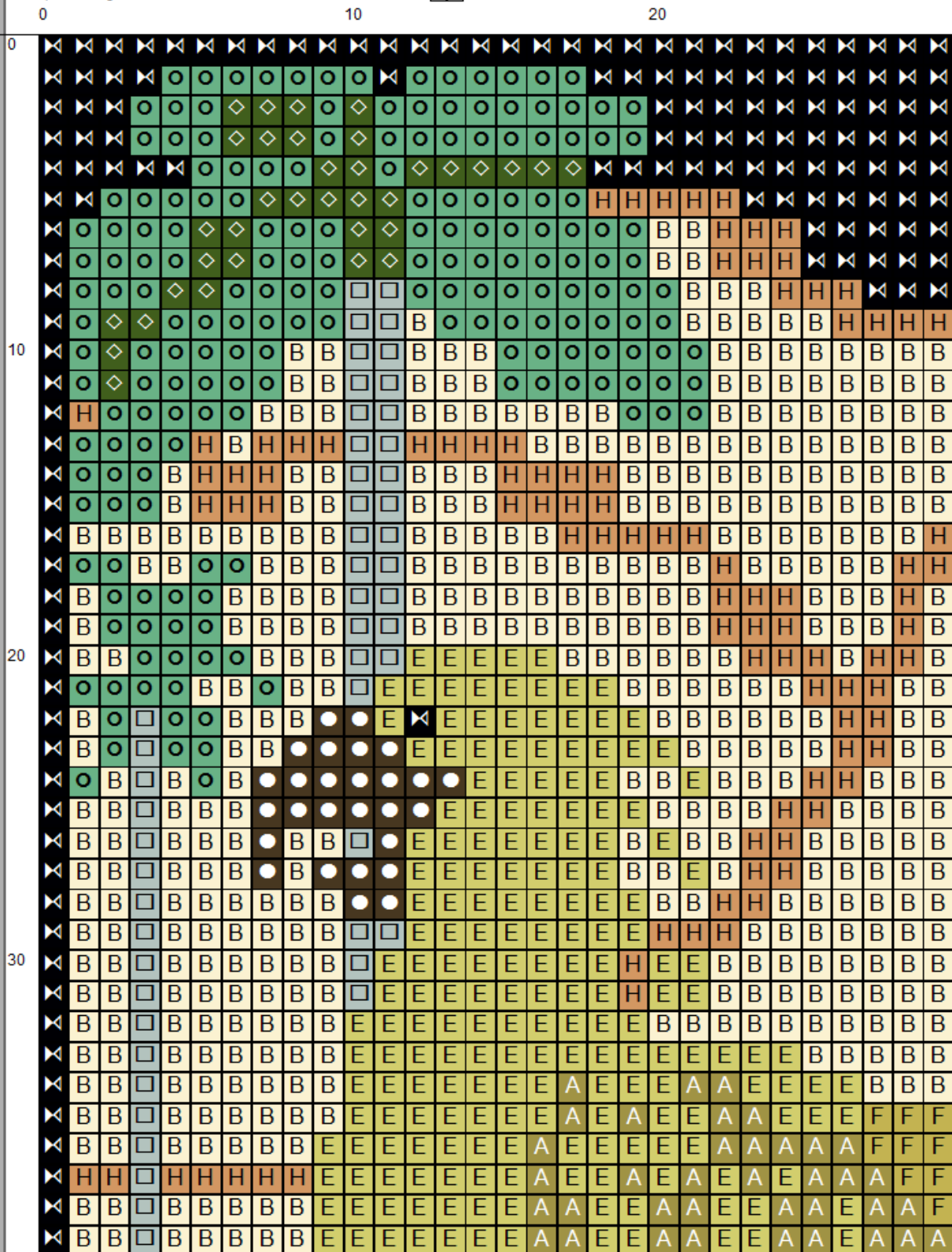
Colour Knitting Chart



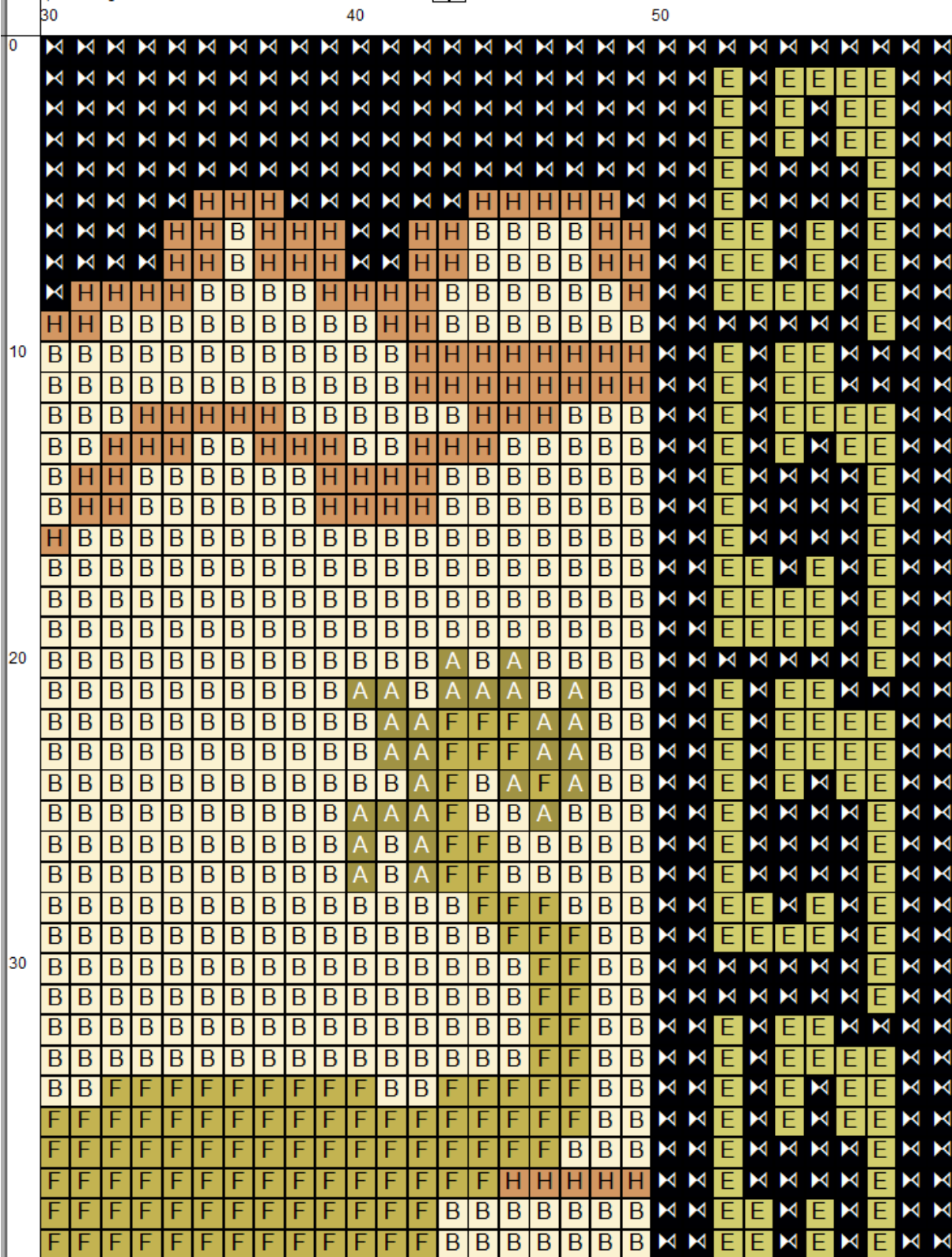
Colour Knitting Chart bottom left



Colour Knitting Chart bottom right



Colour Knitting Chart top left



Colour Knitting Chart top right