

Candle Flame Stockings *By Kai Mistry*



Romance, sensuality, candlelight, champagne, love; these are all the words that come to mind when you see these stockings.

Knee-highs that make you feel sexy, with ribbons that add that final touch. A woman's legs are a thing of beauty that should be show-cased in stockings made just for this purpose.

PHOTOGRAPHS: OLIVER ROCHFORD, KAI MISTRY MODEL: KAI MISTRY

FINISHED MEASUREMENTS

Finished leg circumference at calf: 23.75cm/9½inches, with approximately 12.5cm/5inches of negative ease.

Shown in size: Ladies' Medium, stretched to fit 37.5cm/15inch calf.

SUGGESTED YARN

Yarn: 3 skeins Regia Silk 4-Ply (200m/50g) in colour: Cream

NEEDLES

Needles: 2.5mm DPNs/Circulars

NOTIONS

Notions: 1m Ribbon to thread through eyelets

TENSION

34 sts and 42 rows = 10cm/4inches in stocking stitch

PATTERN NOTES

The Candle Lace Pattern works up over 27 sts, but you will be increasing and decreasing sts throughout the pattern repeat. This is why the number of sts used for the back is always important. The Twisted Cables will eventually be decreased to just one on either side of the Candle Lace Pattern as you come down the leg. The Trellis Lace Pattern is a multiple of 4 + 2 sts and is worked across the back of the stocking.

For Increases, use the M1 instructions and for decreasing at the back seam, slip 2 sts knitwise, knit the next stitch and then pass over the two slipped stitches. This should give you a decrease that looks like an arrow head.

Candle Flame Stockings *By Kai Mistry*

ABBREVIATIONS

k – knit

p – purl

k2tog – knit the next two stitches together

ssk – slip the next two stitches knitwise, move them back to the left hand needle and then knit them both together through the back loop

m1 – make a new stitch. Lift bar between needle and stitch, twist and knit into the back loop

sl1k wyif - sl1 st knitwise with yarn at front of work

sl1p wyib - sl1 st purlwise with yarn at back of work

INSTRUCTIONS

CO 78 sts. Divide evenly across 3 or 4 needles. Join to work in the round, being careful not to twist stitches.

Knit 6 rounds.

PICOT ROUND: *YO, K2tog. Repeat from * until end of round.

Knit a further 5 rounds.

PICOT JOINING ROUND: Fold the knitting in half, where the picot ridges are. Make sure the cast on edge is on the inside. You should have your knitting facing towards you and the cast on edge on the other side. Pick up the first cast on stitch and knit it together with the first stitch on the needle. Repeat this process until all the cast on stitches have been worked with the live stitches. You should now have a picot edge as the cuff of the sock.

Knit one round even.

RIBBON EYELETS ROUND: *YO, K2tog. Repeat from * until end of round.

Knit one round even.



Candle Flame Stockings *By Kai Mistry*

CHARTS

TWISTED CABLES 1:

6	5	4	3	2	1	
		●	●			2
↘	↗	●	●	↘	↗	1

Legend:



Right Twist

sl1 to CN, hold in back, k1.
k1 from CN



purl

purl stitch



knit

knit stitch

Created in Knit Visualizer (www.knitfoundry.com)

Pattern:

R1 (RS): Right Twist, p2, Right Twist

R2: k2, p2, k2

TWISTED CABLES 2:

6	5	4	3	2	1	
		●	●			2
↘	↗	●	●	↘	↗	1

Legend:



Left Twist

sl1 to CN, hold in front. k1,
k1 from CN



purl

purl stitch



knit

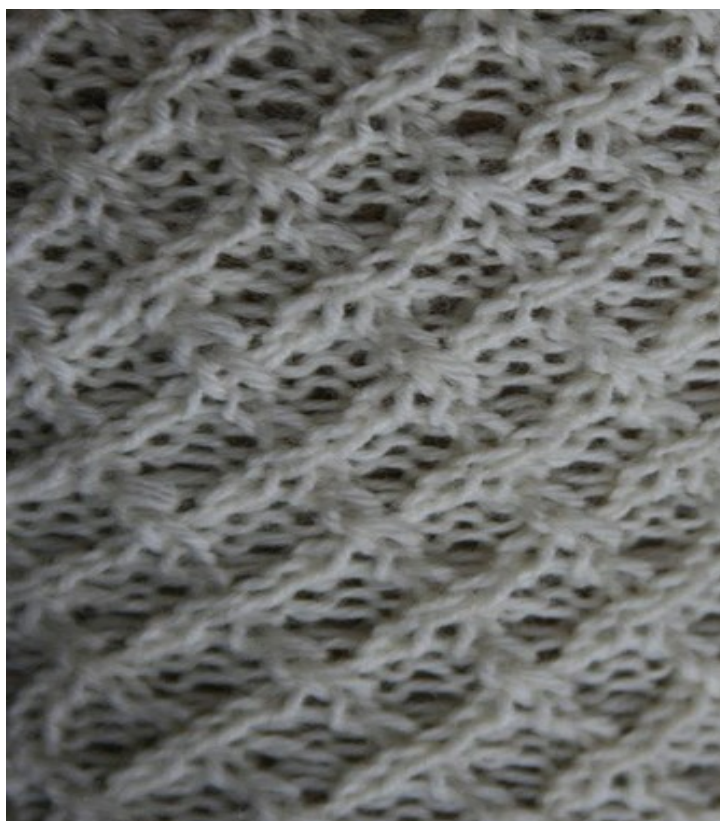
knit stitch

Created in Knit Visualizer (www.knitfoundry.com)

Pattern:

R1 (RS): Left Twist, p2, Left Twist

R2: k2, p2, k2



Candle Flame Stockings *By Kai Mistry*

TRELLIS LACE CHART:

	6	5	4	3	2	1	
	●	●			●	●	8
	●	↘	↗	↗	↘	●	7
			●	●			6
	↗	↘	●	●	↗	↘	5
			●	●			4
		↗	↘	↘	↗		3
	●	●			●	●	2
	●	●	↗	↘	●	●	1

Legend:

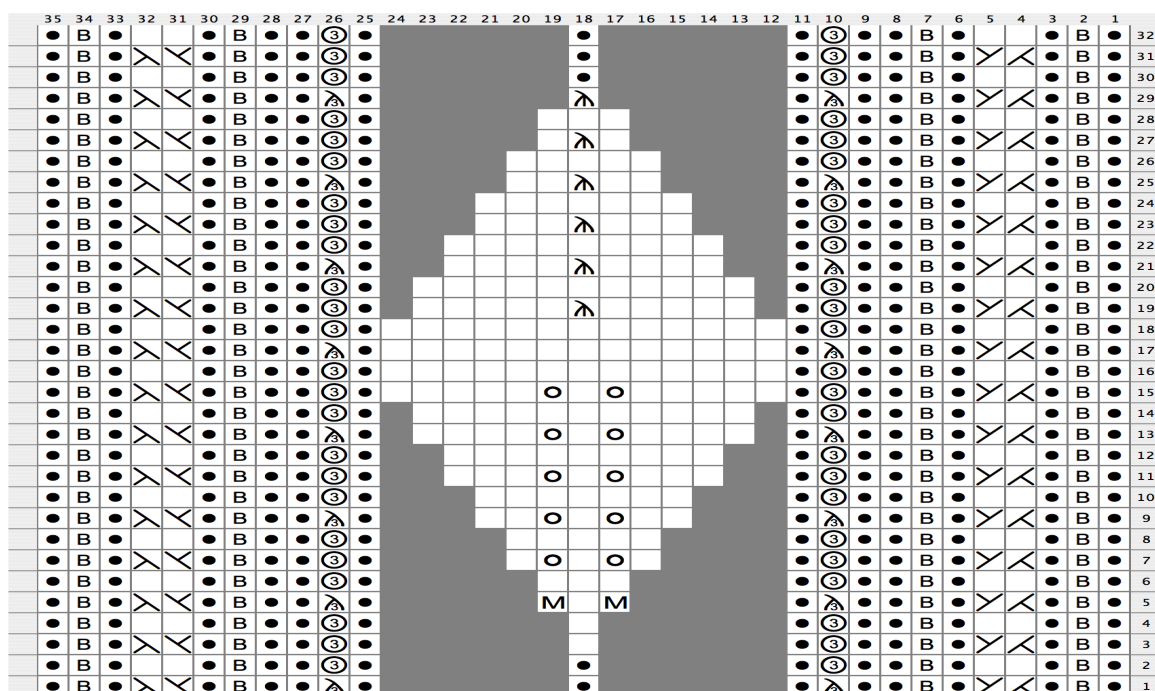
●	purl purl stitch
↗↘	Right Twist sl1 to CN, hold in back, k1. k1 from CN
□	knit knit stitch
↘↗	Right Twist, purl bg sl1 to CN, hold in back. k1, p1 from CN
↗↘	Left Twist, purl bg sl1 to CN, hold in front. p1. k1 from CN
↘↗	Left Twist sl1 to CN, hold in front. k1, k1 from CN

Created in Knit Visualizer (www.knitfoundry.com)



Candle Flame Stockings *By Kai Mistry*

CANDLE FLAME CHART:



Legend:

●	purl purl stitch
B	knit tbl Knit stitch through back loop
X	Right Twist sl1 to CN, hold in back, k1, k1 from CN
Y	Left Twist sl1 to CN, hold in front, k1, k1 from CN
M	make one Make one by lifting strand in between stitch just worked and the next stitch, knit into back of this thread.
O	yo Yarn Over
⌞	sl1 k2tog psso slip 1, k2tog, pass slip stitch over k2tog

Created in Knit Visualizer (www.knitfoundry.com)

Pattern:
R1 (RS): p1, k tbl, p1, Right Twist, p1, k tbl, p2, sl1p k1 yo k1 psso, p3, sl1p k1 yo k1 psso, p2, k tbl, p1, Left Twist, p1, k tbl, p1
R2: p1, k tbl, p1, k2, p1, k tbl, p2, k3, p3, k3, p2, k tbl, p1, k2, p1, k tbl, p1
R3: p1, k tbl, p1, Right Twist, p1, k tbl, p2, k3, p1, k1, p1, k3, p2, k tbl, p1, Left Twist, p1, k tbl, p1
R4: p1, k tbl, p1, k2, p1, k tbl, p2, k3, p1, k1, p1, k3, p2, k tbl, p1, k2, p1, k tbl, p1
R5: p1, k tbl, p1, Right Twist, p1, k tbl, p2, sl1p k1 yo k1 psso, p1, m1, k1, m1, p1, sl1p k1 yo k1 psso, p2, k tbl, p1, Left Twist, p1, k tbl, p1
R6: p1, k tbl, p1, k2, p1, k tbl, p2, k3, p1, k3, p1, k3, p2, k tbl, p1, k2, p1, k tbl, p1
R7: p1, k tbl, p1, Right Twist, p1, k tbl, p2, k3, p1, k1, yo, k1, yo, k1, p1, k3, p2, k tbl, p1, Left Twist, p1, k tbl, p1
R8: p1, k tbl, p1, k2, p1, k tbl, p2, k3, p1, k5, p1, k3, p2, k tbl, p1, k2, p1, k tbl, p1
R9: p1, k tbl, p1, Right Twist, p1, k tbl, p2, sl1p k1 yo k1 psso, p1, k2, yo, k1, yo, k2, p1, sl1p k1 yo k1 psso, p2, k tbl, p1, Left Twist, p1, k tbl, p1
R10: p1, k tbl, p1, k2, p1, k tbl, p2, k3, p1, k7, p1, k3, p2, k tbl, p1, k2, p1, k tbl, p1
R11: p1, k tbl, p1, Right Twist, p1, k tbl, p2, k3, p1, k3, yo, k1, yo, k3, p1, k3, p2, k tbl, p1, Left Twist, p1, k tbl, p1
R12: p1, k tbl, p1, k2, p1, k tbl, p2, k3, p1, k9, p1, k3, p2, k tbl, p1, k2, p1, k tbl, p1
R13: p1, k tbl, p1, Right Twist, p1, k tbl, p2, sl1p k1 yo k1 psso, p1, k4, yo, k1, yo, k4, p1, sl1p k1 yo k1 psso, p2, k tbl, p1, Left Twist, p1, k tbl, p1
R14: p1, k tbl, p1, k2, p1, k tbl, p2, k3, p1, k11, p1, k3, p2, k tbl, p1, k2, p1, k tbl, p1
R15: p1, k tbl, p1, Right Twist, p1, k tbl, p2, k3, p1, k5, yo, k1, yo, k5, p1, k3, p2, k tbl, p1, Left Twist, p1, k tbl, p1
R16: p1, k tbl, p1, k2, p1, k tbl, p2, k3, p1, k13, p1, k3, p2, k tbl, p1, k2, p1, k tbl, p1
R17: p1, k tbl, p1, Right Twist, p1, k tbl, p2, sl1p k1 yo k1 psso, p1, k13, p1, sl1p k1 yo k1 psso, p2, k tbl, p1, Left Twist, p1, k tbl, p1
R18: p1, k tbl, p1, k2, p1, k tbl, p2, k3, p1, k13, p1, k3, p2, k tbl, p1, k2, p1, k tbl, p1
R19: p1, k tbl, p1, Right Twist, p1, k tbl, p2, k3, p1, k5, sl1 k2tog psso, k5, p1, k3, p2, k tbl, p1, Left Twist, p1, k tbl, p1
R20: p1, k tbl, p1, k2, p1, k tbl, p2, k3, p1, k11, p1, k3, p2, k tbl, p1, k2, p1, k tbl, p1
R21: p1, k tbl, p1, Right Twist, p1, k tbl, p2, sl1p k1 yo k1 psso, p1, k4, sl1 k2tog psso, k4, p1, sl1p k1 yo k1 psso, p2, k tbl, p1, Left Twist, p1, k tbl, p1
R22: p1, k tbl, p1, k2, p1, k tbl, p2, k3, p1, k9, p1, k3, p2, k tbl, p1, k2, p1, k tbl, p1
R23: p1, k tbl, p1, Right Twist, p1, k tbl, p2, k3, p1, k3, sl1 k2tog psso, k3, p1, k3, p2, k tbl, p1, Left Twist, p1, k tbl, p1
R24: p1, k tbl, p1, k2, p1, k tbl, p2, k3, p1, k7, p1, k3, p2, k tbl, p1, k2, p1, k tbl, p1
R25: p1, k tbl, p1, Right Twist, p1, k tbl, p2, sl1p k1 yo k1 psso, p1, k2, sl1 k2tog psso, k2, p1, sl1p k1 yo k1 psso, p2, k tbl, p1, Left Twist, p1, k tbl, p1
R26: p1, k tbl, p1, k2, p1, k tbl, p2, k3, p1, k5, p1, k3, p2, k tbl, p1, k2, p1, k tbl, p1
R27: p1, k tbl, p1, Right Twist, p1, k tbl, p2, k3, p1, k1, sl1 k2tog psso, k1, p1, k3, p2, k tbl, p1, Left Twist, p1, k tbl, p1
R28: p1, k tbl, p1, k2, p1, k tbl, p2, k3, p1, k3, p1, k3, p2, k tbl, p1, k2, p1, k tbl, p1
R29: p1, k tbl, p1, Right Twist, p1, k tbl, p2, sl1p k1 yo k1 psso, p1, sl1 k2tog psso, p1, sl1p k1 yo k1 psso, p2, k tbl, p1, Left Twist, p1, k tbl, p1
R30: p1, k tbl, p1, k2, p1, k tbl, p2, k3, p3, k3, p2, k tbl, p1, k2, p1, k tbl, p1
R31: p1, k tbl, p1, Right Twist, p1, k tbl, p2, k3, p3, k3, p2, k tbl, p1, Left Twist, p1, k tbl, p1
R32: p1, k tbl, p1, k2, p1, k tbl, p2, k3, p3, k3, p2, k tbl, p1, k2, p1, k tbl, p1

Candle Flame Stockings *By Kai Mistry*

LEG

Next Round: Starting with Row 1 of the Twisted Cables 1 Chart, work first 6 sts. Then work Row 1 of the Candle Flame Chart across the next 27 sts. Work the final 6 sts using Row 1 of the Twisted Cables 2 Chart.

Work the next 18 sts using Row 1 of the Trellis Lace Chart, then P1, K1, P1. Work the last 18 sts using the Trellis Lace Chart again.

Work in pattern as set until round 4.

Increase Round:

Round 4: Work in pattern as set for the first 39 sts. Work Trellis Lace Chart for the next 18 sts. P1, M1, K1, M1, P1, continue with the Trellis Lace Chart.

Repeat increase round every 4th round until you have completed the Candle Flame Chart for one repeat.

NOTE: When increasing at the back seam, make sure that the extra stitches are worked into the Trellis Lace Chart pattern. ALSO, Depending on the circumference of your calf, the increasing is to be worked until you reach the largest part of your calf, so keep trying on your stocking.

Work 5 rounds with no increases before moving onto the next part.



Candle Flame Stockings *By Kai Mistry*

Decrease Rounds:

Next Round: Work Row 6 of all charts, but decrease 1 st on either side of the back seam (k1).

Next Round: Work Row 7 of all charts.

Next Round: Work all charts

Next Round: Work all charts

Decrease in this manner until you have 39 sts at the back. Carry on in pattern as set until you have completed this repeat of the Candle Flame Chart, without decreasing.

Work first 3 rows of Candle Flame Chart before resuming the decreases at the back seam, but also start the following decreasing at the front (you will be decreasing every 4th row):

Next Round: K1, ssk, p1, work stitches 5 & 6 from Twisted Cables 1 Chart. Work next row of Candle Flame Chart and then work stitches 1 - 3 of Twisted Cables 2 Chart and then k2tog, k1. Work Trellis Lace Chart and decrease at seam as before.

Next Round: Work from Twisted Cables 1 Chart, but only p1 between the two twists. Work next row of Candle Flame Chart, and then work Twisted Cables 2 Chart, with only a p1 in the middle. Work Trellis Lace Chart.

Work 2 rounds in pattern without any decreases and then at next round:

Next Round: K1, ssk, work stitches 5 & 6 of Twisted Cables 1 Chart. Work next row of Candle Flame Chart and then work stitches 1 & 2 of Twisted Cables 2 Chart and then k2tog, k1. Work Trellis Lace Chart, with decreases.

Next Round: Work in pattern, no decreases.

Work 2 rounds in pattern and then next decrease round:

Next Round: K1, ssk, k1, work Candle Flame Chart, k1, k2tog, k1. Work Trellis Lace Chart, with decreasing.

Next Round: Work sts 1 & 2 of Twisted Cables 1 Chart and then k1. Work row of Candle Flame Chart, k1, work stitches 5 & 6 of Twisted Cables 2 Chart. Work Trellis Lace Chart.

Work 2 rounds as set and then the final decrease:

Next Round: K1, ssk. Work Candle Flame Chart, k2tog, k1. Work Trellis Lace Chart with decreases. This should leave you with 33 sts for the back.

This should leave you with a total of 64 sts at the end of the Candle Flame pattern.

Continue in this manner until you have completed a total of 4 repeats of the Leaf Lace Chart OR the leg is the correct length for you and ready to work the heel.

Candle Flame Stockings *By Kai Mistry*

EYE OF PARTRIDGE HEEL WITH GERMAN CHAIN SELVEDGE:

Row 1(WS): K1, Purl to last st, sl1k wyif.

Row 2(RS): K1, *K1, sl1p wyib, rep from * to last 2 sts, K1, sl1k wyif

Row 3(WS): Repeat Row 1

Row 4(RS): K1, *sl1p wyib, K1, rep from * to last 2 sts, sl1p wyib, sl1k wyif

Repeat rows 1-4 for a total of 8 times, giving you 32 heel flap rows. Last row should be a RS row.

HEEL TURN:

Row 1(WS): Sl1, P16 sts, P2tog, P1. Turn

Row 2(RS): Sl1, k4, ssk, k1. Turn. (There is a gap between working sts and unworked sts)

Row 3: Sl1, purl to within 1 st of gap, p2tog, p1. Turn.

Row 4: Sl1, knit to within 1 st of gap, ssk, k1. Turn.

Repeat Rows 3 & 4 until all sts have been worked. End with a RS row. You should have 19 sts left.

GUSSET:

With RS facing, pick up and knit 16 selvedge sts, plus an extra 2 sts at top of gusset.

Work next 31 sts in the first twist & Candle Flame Chart and last twist, Row 1 or next row to continue in pattern.

Pick up and knit 2 sts at top of gusset and 16 selvedge sts. Knit 9 heel sts.

The beginning of the round is now the centre of the bottom of the foot.

Next Round: Knit to 3 sts before gusset edge, K2tog, k1. Work Candle Flame Chart across next 31 sts (row 2), k1, ssk, knit to end of round.

Next Round: Knit to beginning of lace pattern and work 31 sts in Candle Flame Chart, knit to end of round.

Repeat these 2 rounds until you have a total of 60 stitches left.

Continue in lace pattern across 31 sts front lace panel sts and knit 29 sole sts until foot measures 1½" short of the end of your foot.

Knit one round full.

TOE SHAPING:

Round 1: K1, ssk, k24, k2tog, k1 and transfer extra stitch to beginning of next needle. K1, ssk, knit to last 3 sts, k2tog, k1.

Round 2: Knit

Round 3: *K1, ssk, knit to last 3 sts on front of sock, k2tog, k1, repeat from * for the sole.

Candle Flame Stockings *By Kai Mistry*

Repeat Rounds 2 & 3 until you have a total of 32 sts and then repeat Round 3 until you have 16 sts left. Graft these stitches together.

Repeat from the beginning for the second sock.

FINISHING

Weave in all ends, thread your choice of ribbon through the eyelets and wear with sensuality!

