



Primrose Shawl

This is a triangular shawl worked from the top down with a garter tap cast on. It is finished at the border using a picot bind off. Special elements are stockinette stripes and the primrose lace pattern, which is created by eyelets and garter stitch. Both written and charted instructions are included.

The shawl uses three colors, which are constantly alternating to provide an entertaining and enjoyable knit. During the color changes it is often not necessary to break the yarn. Just twist it around each other every other row. This way you carry the resting yarn with you.

SIZES

one size

FINISHED MEASUREMENTS

length - 145cm / 57in

width - 60cm / 23,5in

YARN

You need three colors of fingering weight yarn. I used [Kathienchen Yarns Gold Stellina](#) in the colors Esthers Flower's (C1), Dried Roses (C2) and Secret Garden (C3). But any other fingering weight yarn will do just fine.

C1: one 100g skein (actual yarn use: 260m / 285yd - 65g)

C2: one 100g skein (actual yarn use: 160m / 175yd - 40g)

C3: one 20g mini skein (actual yarn use 74m / 80yd - 20g)

NEEDLES

Size US5 / 3,75mm needle on a 32in / 80cm cord. Please adjust correct needle size to your gauge.

NOTIONS

Four stitch markers. Tapestry needle.

GAUGE

20 stitches an 32 rows = 4in / 10cm in stockinette stitch pattern (after washing and blocking)

ABBREVIATIONS

- CO: cast on
- k: knit
- p: purl
- sM: slip marker
- CM: central marker
- sCM: slip central marker
- RS: right side
- WS: wrong side
- m1l: make one left
- m1r: make one right
- yo: yarn over
- k2tog: knit two together
- ssk: slip, slip, knit two together through the back loops, decrease
- DDC (double decrease): Slip the next stitch knit wise, k2tog, pass the slipped stitch over. Two stitches decreased.

GARTER TAP CAST ON***C1**

CO 3 stitches

K for 7 rounds

Do not turn, but pick up and knit 3 stitches down the left side of the fabric (one stitch in each ridge/garter bump), then pick up and knit 3 stitches from CO edge.

→ 9 stitches

SET UP

Next row: K3, sM, p1, sCM, p1, sCM, p1, sM, K3

→ 9 stitches

Row (RS): k3, sM, m1l, k1, m1r, sCM, k1, sCM, m1l, k1, m1r, sM, k3

→ 13 stitches

Row (WS): k3, p to M, sCM, p1, sCM, p to M, sM, k3

Row (RS): k3, sM, m1l, k to Cm, m1r, sCM, k1, sCM, m1l, k to M, m1r, sM, k3

→ 17 stitches

Row (WS): Knit all stitches slipping markers as you go:

K3, sM, k to CM, sCM, k1, sCM, k to M, sM, k3

SECTION 1 - Stockinette Stripes***C2**

Row A (RS): k3, sM, m1l, k to CM, m1r, sCM, k1, sCM, m1l, k to M, m1r, sM, k3 → 21 stitches

Row B (WS): k3, sM, p to CM, sCM, p1, sCM, p to M, sM, k3

Row A (RS): repeat row A → 25 stitches

Row B (WS)

Row A (RS) → 29 stitches

Row C (WS): Knit all stitches slipping markers as you go:

k3, sM, k to CM, sCM, k1, sCM, k to M, sM, k3

***C1**

Row A (RS): k3, sM, m1l, k to CM, m1r, sCM, k1, sCM, m1l, k to M, m1r, sM, k3 → 33 stitches

Row B (WS): k3, sM, p to CM, sCM, p1, sCM, p to M, sM, k3

Row A (RS) → 37 stitches

Row B (WS)

Row A (RS) → 41 stitches

Row C (WS): Knit all stitches slipping markers as you go:

k3, sM, k to CM, sCM, k1, sCM, k to M, sM, k3C2



Row A (RS) → 85 stitches
Row B (WS)

Row A (RS) → 89 stitches
Row C (WS)

***C2**
Row A (RS) → 93 stitches
Row B (WS)

Row A (RS) → 97 stitches
Row B (WS)

Row A (RS) → 101 stitches
Row C (WS)

***C1**
Row A (RS) → 105 stitches
Row B (WS)

Row A (RS) → 109 stitches
Row B (WS)

Row A (RS) → 113 stitches
Row C (WS)

***C2**
Row A (RS) → 117 stitches
Row B (WS)

Row A (RS) → 121 stitches
Row B (WS)

Row A (RS) → 125 stitches
Row C (WS)

Break **C1**. Carry **C2**.

SECTION 2 - Eyelet Rows

***C3**
Row 1 (RS, A): k3, sM, m1l, k to CM, m1r, sCM, k1, sCM, m1l, k to M, m1r, sM, k3
 → 129 stitches

Row 2 (WS): repeat row C

Row 3 (RS): k3, sM, yo, (k2tog, yo) repeat until 1 stitch before CM, k1, yo, sCM, k1 (center stitch), sCM, yo, k1, (yo, k2tog) repeat until M, yo, sM, k3 → 133 stitches

Row 4 (WS): repeat row C

Break **C3**.

***C2**
Row A (RS) → 45 stitches
Row B (WS)

Row A (RS) → 49 stitches
Row B (WS)

Row A (RS) → 53 stitches
Row C (WS)

***C1**
Row A (RS) → 57 stitches
Row B (WS)

Row A (RS) → 61 stitches
Row B (WS)

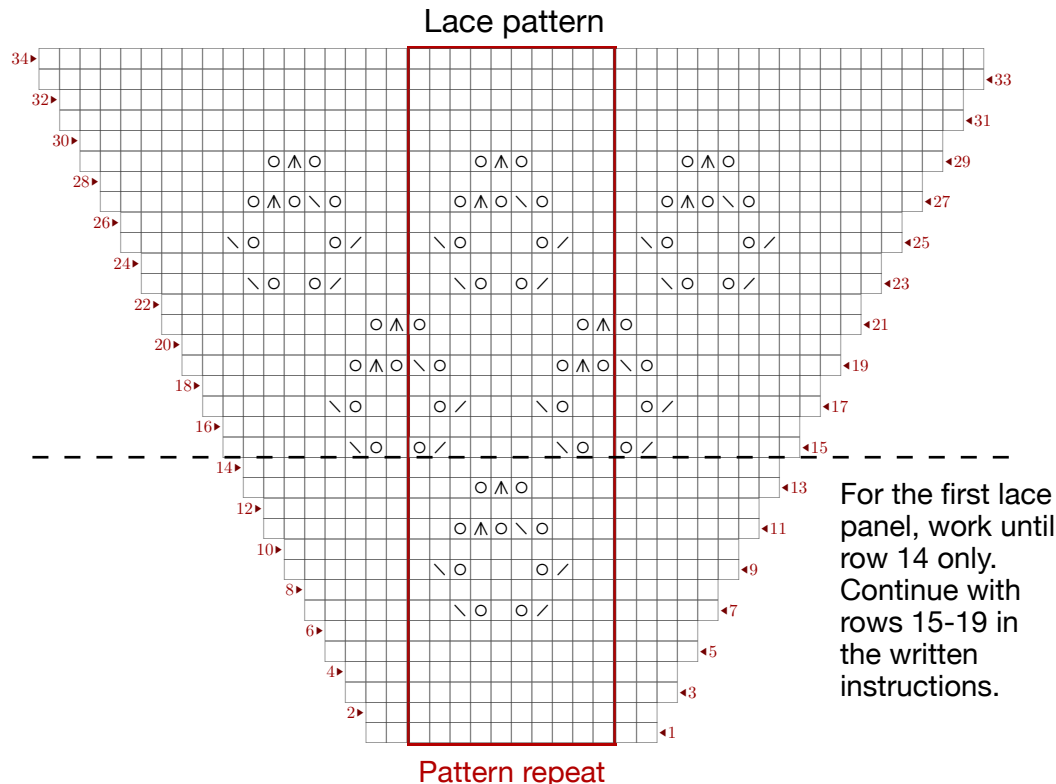
Row A (RS) → 65 stitches
Row C (WS)

***C2**
Row A (RS) → 69 stitches
Row B (WS)

Row A (RS) → 73 stitches
Row B (WS)

Row A (RS) → 77 stitches
Row C (WS)

***C1**
Row A (RS) → 81 stitches
Row B (WS)



SECTION 3 - Primrose Lace

*C2

Row 1 (RS, A): k3, sM, m1l, k to CM, m1r, sCM, k1, sCM, m1l, k to M, m1r, sM, k3
→ 137 stitches

Row 2 (WS, C): Knit all stitches slipping markers as you go:
k3, sM, k to CM, sCM, k1, sCM, k to M, sM, k3

Row 3 (RS): repeat row A → 141 stitches

Row 4 (WS): repeat row C

Row 5 (RS): repeat row A → 145 stitches

Row 6 (WS): repeat row C

Row 7 (RS): k3, sM, m1l, k5, (k3, k2tog, yo, k1, yo, ssk, k2) repeat to 4 stitches before CM, k4, m1r, sCM, k1, sCM, m1l, k4 (k2, k2tog, yo, k1, yo, ssk, k3) to 5 stitches before M, k5, m1r, sM, k3
→ 149 stitches

Row 8 (WS): repeat row C

Row 9 (RS): k3, sM, m1l, k6, (k2, k2tog, yo, k3, yo, ssk, k1) to 5 stitches before CM, k5, m1r, sCM, k1, sCM, m1l, k5 (k1, k2tog, yo, k3, yo, ssk, k2) to 6 stitches before M, k6, m1r, sM, k3

→ 153 stitches

Row 10 (WS): repeat row C

Row 11 (RS): k3, m1l, k7, (k3, yo, ssk, yo, DDC, yo, k2) to 6 stitches before CM, k6, m1r, sCM, k1, sCM, m1l, k6, (k2, yo, ssk, yo, DDC, yo, k3) to 7 stitches before M, k7, m1r, sM, k3
→ 157 stitches

Row 12 (WS): repeat row C

Row 13 (RS): k3, m1l, k8, (k4, yo, DDC, yo k3) to 7 stitches before CM, k7, m1r, sCM, k1, sCM, m1l, k7, (k3, yo, DDC, yo, k4) to 8 stitches before M, k8, m1r, sM, k3 → 161 stitches

Row 14 (WS): repeat row C

Row 15 (RS): repeat row A:
k3 sM m1l k to CM m1r sCM k1 sCM m1l k to m m1r sM k3
→ 165 stitches

Row 16 (WS): repeat row C

Row 17 (RS): repeat row A → 169 stitches

Row 18 (WS): repeat row C

Row 19 (RS): repeat row A → 173 stitches

Row 20 (WS): repeat row C



Row A (RS) → 205 stitches
Row C (WS)

***C2**

Row A (RS) → 209 stitches
Row B (WS)

Row A (RS) → 213 stitches
Row B (WS)

Row A (RS) → 217 stitches
Row C (WS)

***C1**

Row A (RS) → 221 stitches
Row B (WS)

Row A (RS) → 225 stitches
Row B (WS)

Row A (RS) → 229 stitches
Row C (WS)

SECTION 4 - Eyelet Rows

***C3**

repeat section 2
 → 181 stitches

Break **C3**.

SECTION 5 - Stockinette Stripes

***C2**

Row A (RS): k3, sM, m1l, k to CM, m1r, sCM, k1, sCM, m1l, k to M, m1r, sM, k3
 → 185 stitches

Row B (WS): k3, sM, p to CM, sCM, p1, sCM, p to M, sM, k3

Row A (RS) → 189 stitches
Row B (WS)

Row A (RS) → 193 stitches

Row C (WS): Knit all stitches slipping markers as you go:
 k3, sM, k to CM, sCM, k1, sCM, k to M, sM, k3

***C1**

Row A (RS) → 197 stitches
Row B (WS)

Row A (RS) → 201 stitches
Row B (WS)

***C2**

Row A (RS) → 233 stitches
Row B (WS)

Row A (RS) → 237 stitches
Row B (WS)

Row A (RS) → 241 stitches
Row C (WS)

***C1**

Row A (RS) → 245 stitches
Row B (WS)

Row A (RS) → 249 stitches
Row B (WS)

Row A (RS) → 253 stitches
Row C (WS)

***C2**

Row A (RS) → 257 stitches
Row B (WS)

Row A (RS) → 261 stitches
Row B (WS)

Row A (RS) → 265 stitches
Row C (WS)

Break **C2**.

SECTION 6 - Eyelet Rows

***C3**

repeat section 2
→ 273 stitches

Break **C3**.

SECTION 7 - Primrose Lace

***C1**

Row 1 (RS): repeat row A:
k3, sM, m1l, k to CM, m1r, sCM, k1, sCM,
m1l, k to M, m1r, sM, k3
→ 277 stitches

Row 2 (WS): Knit all stitches slipping markers
as you go:
k3, sM, k to CM, sCM, k1, sCM, k to M, sM,
k3

Row 3 (RS): repeat row A → 281 stitches

Row 4 (WS): repeat row C

Row 5 (RS): repeat row A → 285 stitches

Row 6 (WS): repeat row C

Row 7 (RS): k3, sM, m1l, (k3, k2tog, yo, k1,
yo, ssk, k2) repeat to 9 stitches before CM,
k3, K2tog, yo, k1, yo ssk, k1, m1r, sCM, k1,
sCM, m1l, k1, k2tog, yo, k1, yo, ssk, (k2,
k2tog, yo, k1, yo, ssk, k3) to M, m1r, sM, k3
→ 289 stitches

Row 8 (WS): repeat row C

Row 9 (RS): k3, sM, m1l, k1, (k2, k2tog, yo,
k3, yo, ssk, k1) to CM, m1r, sCM, k1, sCM,
m1l, (k1, k2tog, yo, k3, yo, ssk, k2) to 1
stitches before M, k1, m1r, sM, k3
→ 293 stitches

Row 10 (WS): repeat row C

Row 11 (RS): k3, m1l, k2, (k3, yo, ssk, yo,
DDC, yo, k2) to 1 stitch before CM, k1, m1r,
sCM, k1, sCM, m1l, k1, (k2, yo, ssk, yo, DDC,
yo, k3) to 2 stitches before M, k2, m1r, sM, k3
→ 297 stitches

Row 12 (WS): repeat row C

Row 13 (RS): k3. m1l, k3, (k4, yo, DDC, yo k3)
to 2 stitch before CM, k2, m1r, sCM, k1, sCM,
m1l, k2, (k3, yo, DDC, yo, K4) to 3 stitches
before M, k3, m1r, sM, k3 → 301 stitches

Row 14 (WS): repeat row C

Row 15 (RS): k3, sM, m1l, k2, k2tog, yo, k1,
yo, ssk, k2, (k3, k2tog, yo, k1, yo, ssk, k2)
repeat to 6

stitches before CM, k6, m1r, sCM, k1, sCM,
m1l, k6, (k2, k2tog, yo, k1, yo, ssk, k3) to 9
stitches before M, k2, k2tog, yo, k1, yo, ssk,
k2, m1r, sM, k3

→ 305 stitches

Row 16 (WS): repeat row C

Row 17 (RS): k3, sM, m1l, (k2, k2tog, yo, k3,
yo, ssk, k1) to 7 stitches before CM, k7, m1r,
sCM, k1, sCM, m1l, k7, (k1, k2tog, yo, k3, yo,
ssk, k2) to M, m1r, sM, k3

→ 309 stitches

Row 18 (WS): repeat row C

Row 19 (RS): k3, m1l, k1, (k3, yo, ssk, yo,
DDC, yo, k2) to 8 stitches before CM, k8, m1r,
sCM, k1, sCM, m1l, k8, (k2, yo, ssk, yo, DDC,
yo, k3) to 1 stitch before M, k1, m1r, sM, k3

→ 313 stitches

Row 20 (WS): repeat row C

Row 21 (RS): k3. m1l, k2, (k4, yo, DDC, yo k3)
to 9 stitch before CM, 9, m1r, sCM, k1, sCM,
m1l, k9, (k3, yo, DDC, yo, K4) to 2 stitches
before M, k2, m1r, sM, k3 → 317 stitches

Row 22 (WS): repeat row C

Row 23 (RS): k3, sM, m1l, k8, (k3, k2tog, yo,
k1, yo, ssk, k2) repeat to 5 stitches before
CM, k5, m1r, sCM, k1, sCM, m1l, k5, (k2,
k2tog, yo, k1, yo, ssk, k3) to 8 stitches before
M, k8, m1r, sM, k3

→ 321 stitches

Row 24 (WS): repeat row C

Row 25 (RS): k3, sM, m1l, k9, (k2, k2tog, yo,
k3, yo, ssk, k1) to 6 stitches before CM, k6,
m1r, sCM, k1, sCM, m1l, k6, (k1, k2tog, yo,
k3, yo, ssk, k2) to 9 stitches before M, k9,
m1r, sM, k3

→ 325 stitches

Row 26 (WS): repeat row C

Row 27 (RS): k3, m1l, k10, (k3, yo, ssk, yo,
DDC, yo, k2) to 7 stitches before CM, k7, m1r,
sCM, k1, sCM, m1l, k7, (k2, yo, ssk, yo, DDC,
yo, k3) to 10 stitches before M, k10, m1r, sM,
k3

→ 329 stitches

Row 28 (WS): repeat row C

Row 29 (RS): k3. m1l, k11, (k4, yo, DDC, yo
k3) to 8 stitch before CM, k8, m1r, sCM, k1,

sCM, m1l, k8, (k3, yo, DDC, yo, K4) to 11 stitches before M, k11, m1r, sM, k3 → 333 stitches

Row 30 (WS): repeat row C

Row 31 (RS): repeat row A:
k3, sM, m1l, k to CM, m1r, sCM, k1, sCM, m1l, k to M, m1r, sM, k3
→ 337 stitches

Row 32 (WS): repeat row C

Row 33 (RS): repeat row A → 341 stitches

Row 34 (WS): repeat row C

Row 35 (RS): repeat row A → 345 stitches

Row 36 (WS): repeat row C

Break **C1**.

SECTION 8 - Border

*C3

Row A (RS): k3, sM, m1l, k to CM, m1r, sCM, k1, sCM, m1l, k to m, m1r, sM, k3
→ 349 stitches

Row C (WS): Knit all stitches slipping markers as you go.
k3, sM, k to CM, sCM, k1, sCM, k to M, sM, k3

PICOT BIND OFF

- Cast on two stitches with the knitted cast on. For this insert the needle into the first leg of the first stitch and pull the yarn trough as if to knit. Do not slip the stitch off the needle. Put the created loop on you left hand needle and let it go. Cast on a second stitch in this matter.
- Bind off four stitches. Slip your last stitch from the right hand needle back to your left hand needle. Two stitches are bound off.
- Cast on tow stitches. Use the knitted Cast on.
- Bind off four stitches.
- Resume in this manner until all stitches are bound off.
- Break C3.

FINISHING

Wave in all ends and block gently. Wear or gift it with pride. :)